



**UNITED NATIONS
UNIVERSITY**

GEOTHERMAL TRAINING PROGRAMME
Orkustofnun, Grensasvegur 9,
IS-108 Reykjavik, Iceland

Reports 2012
Number 30

**APPENDICES TO THE REPORT:
ANALYSING THE SUBSURFACE RESISTIVITY STRUCTURE
ON TWO PROFILES ACROSS THE NÁMAFJALL HIGH-
TEMPERATURE GEOTHERMAL FIELD, NE-ICELAND,
THROUGH 1D JOINT INVERSION OF TEM AND MT DATA**

by

Gaetan Sakindi

Energy Water and Sanitation Authority – EWSA

P.O. Box 537, Kigali

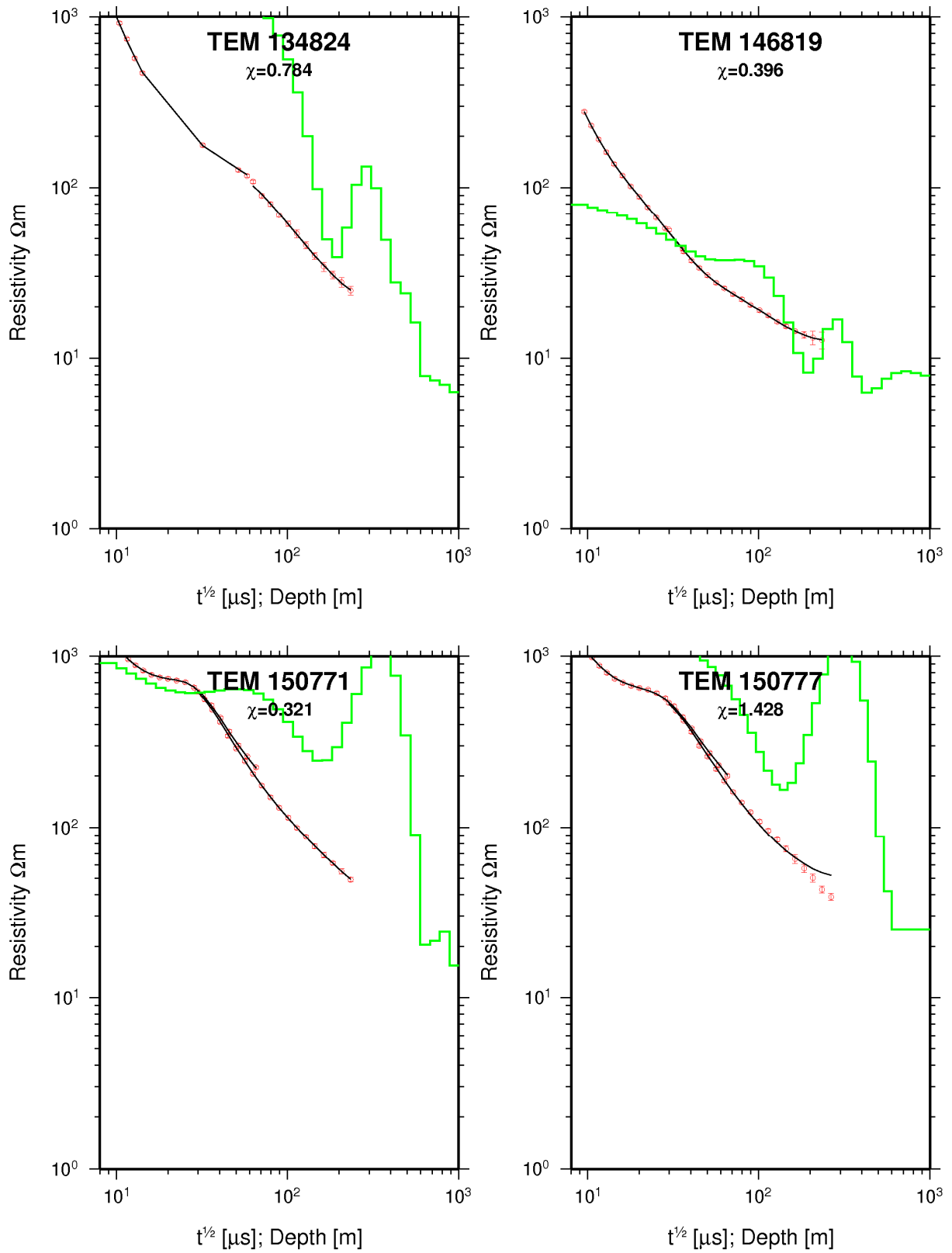
RWANDA

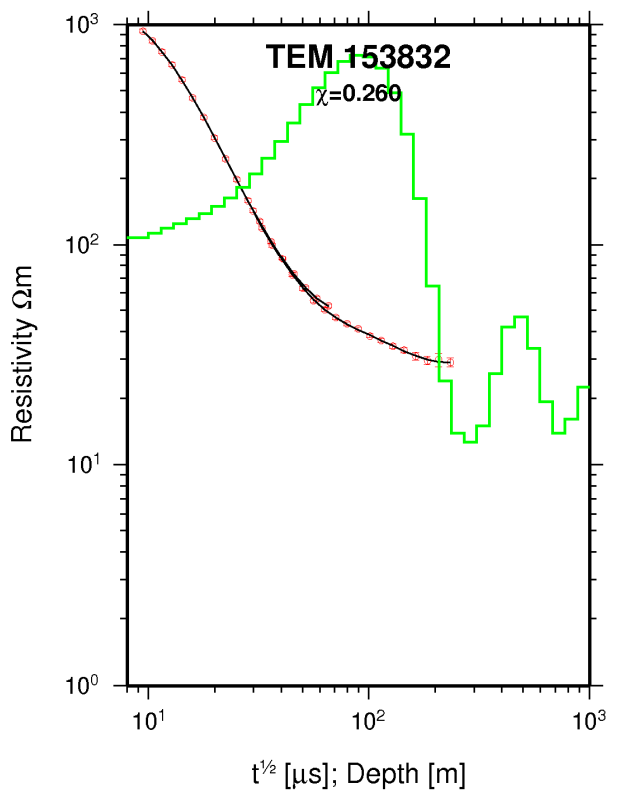
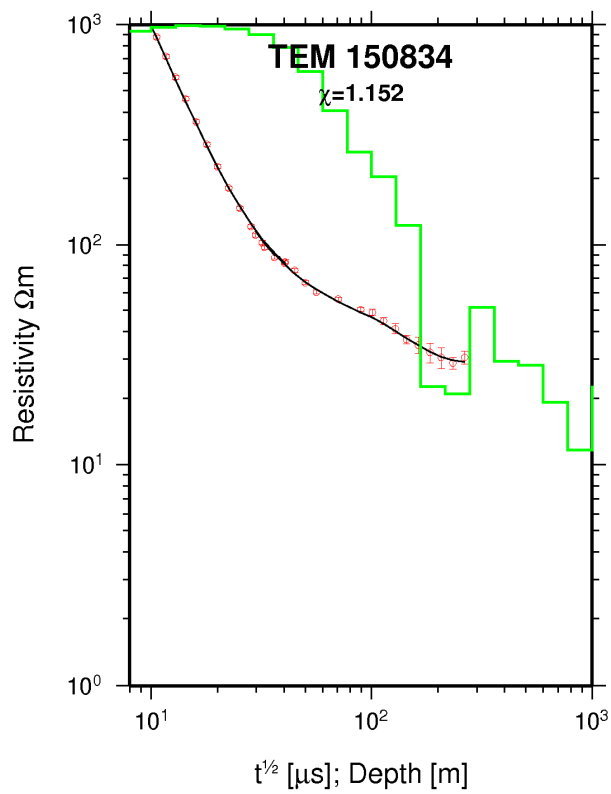
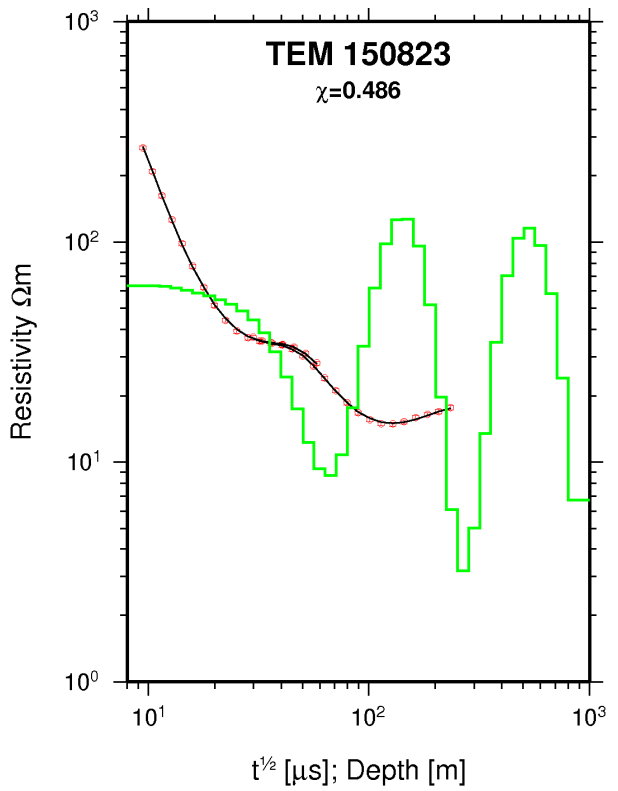
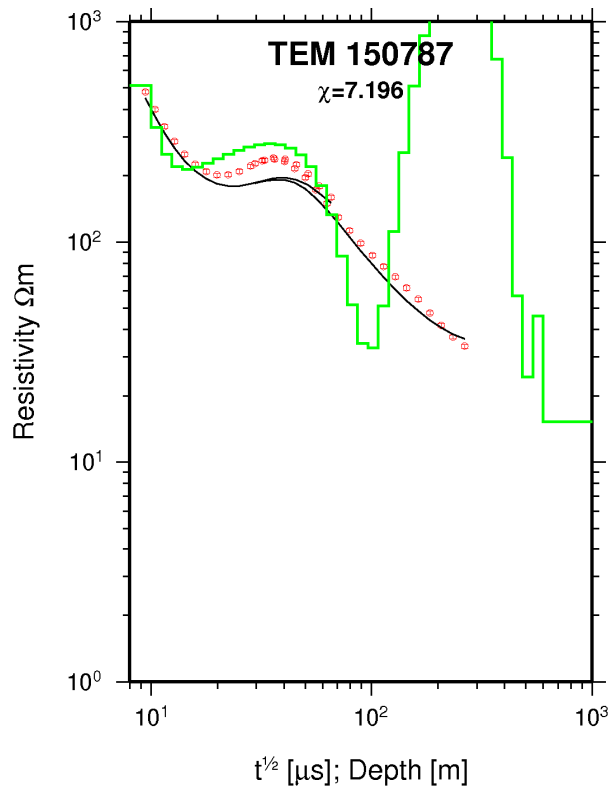
gaetandi@yahoo.fr

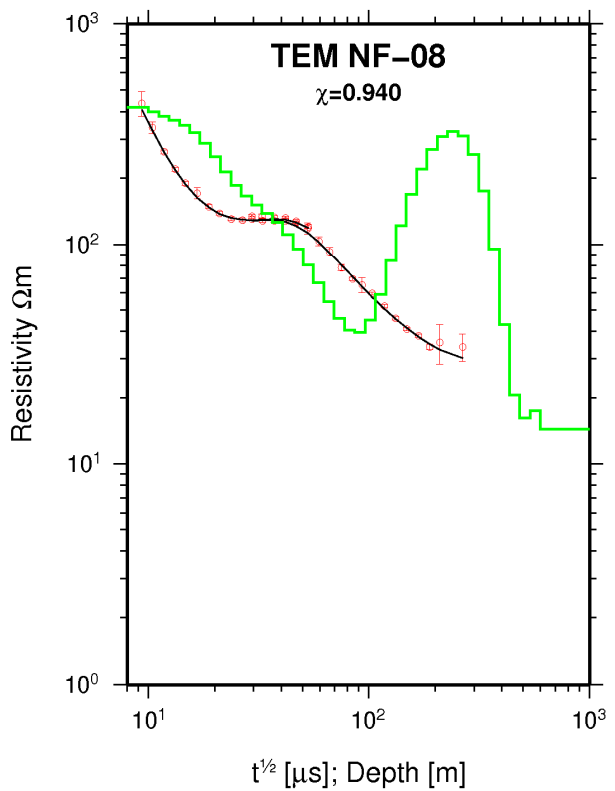
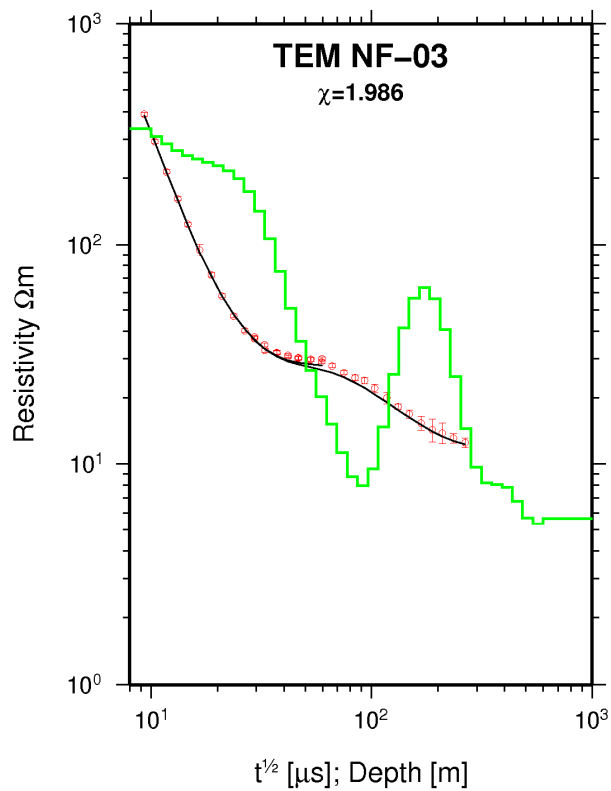
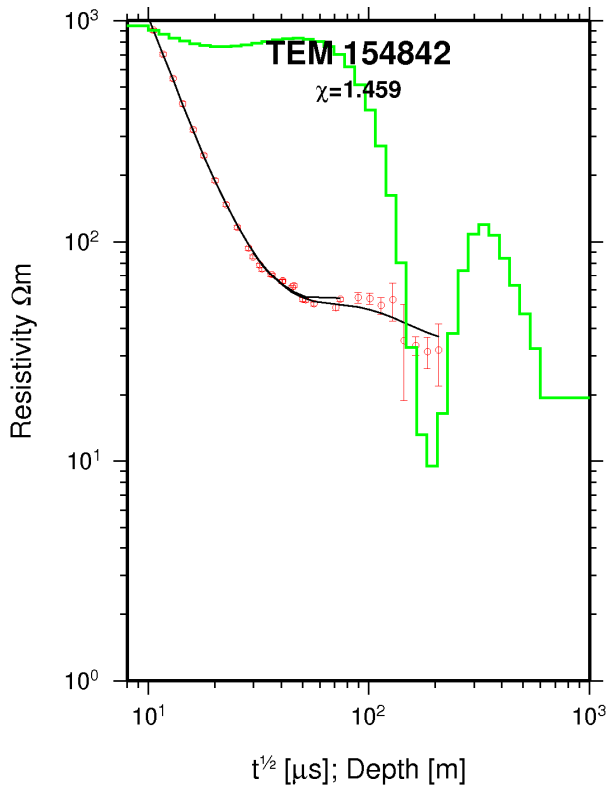
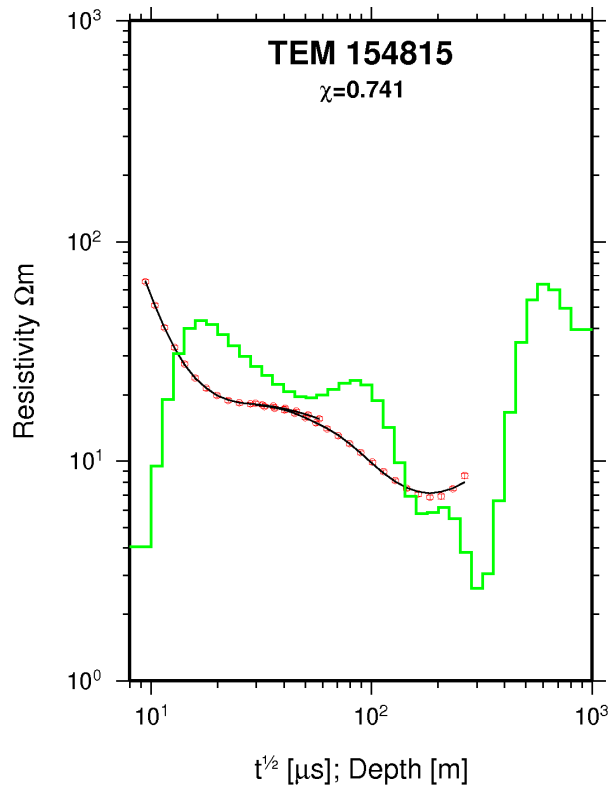
United Nations University
Geothermal Training Programme
Reykjavík, Iceland
Published in 2012

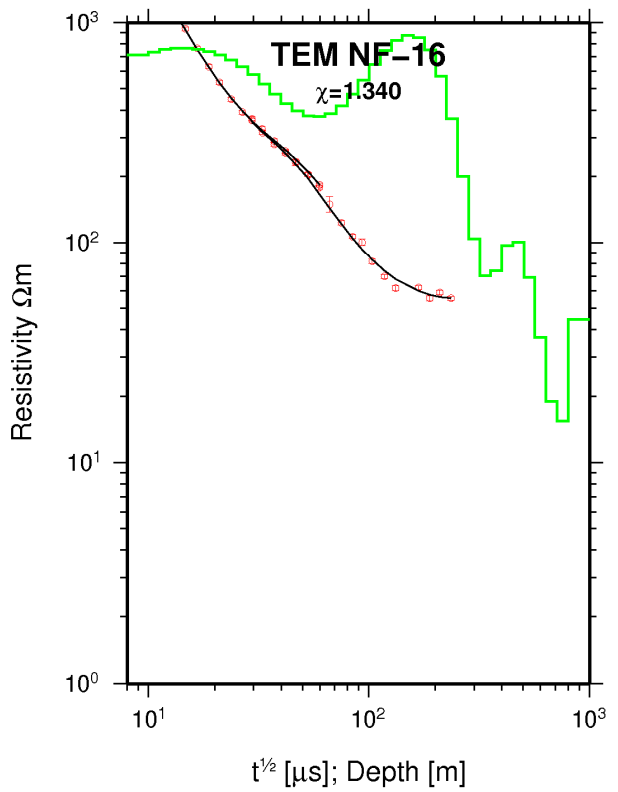
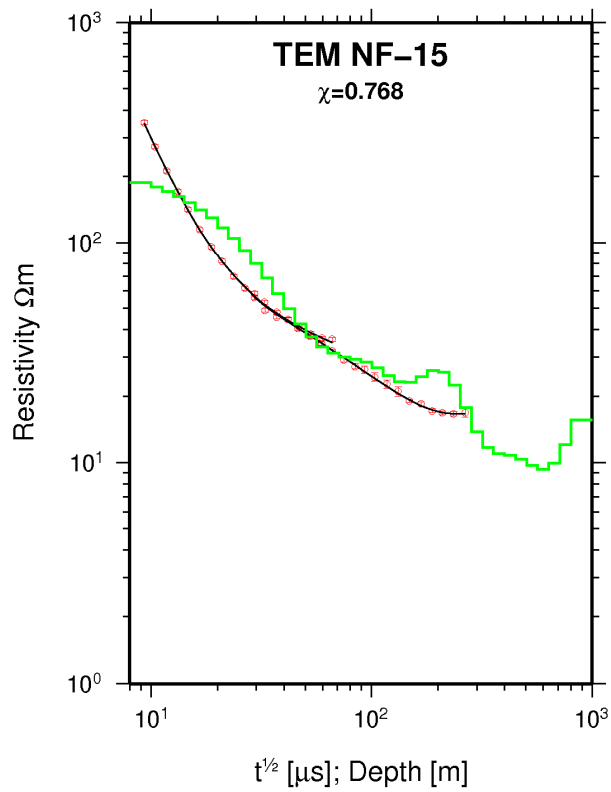
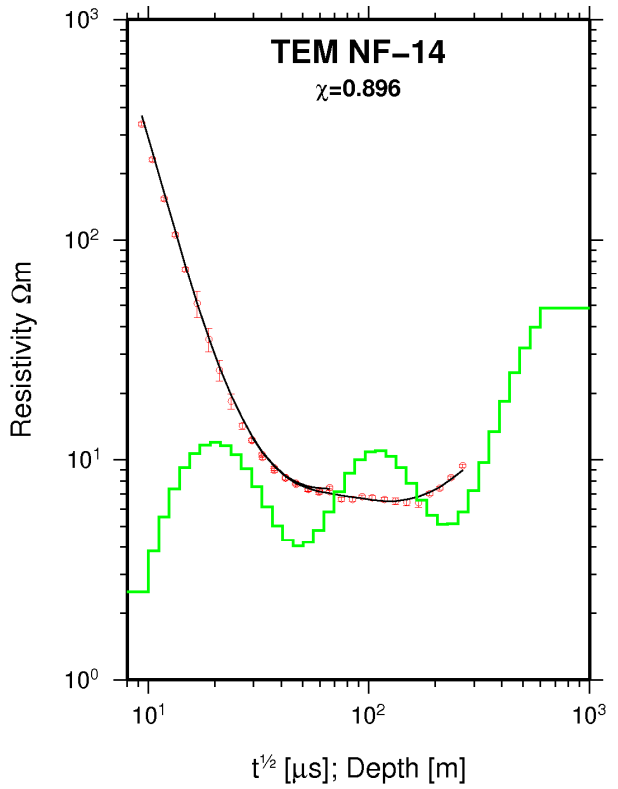
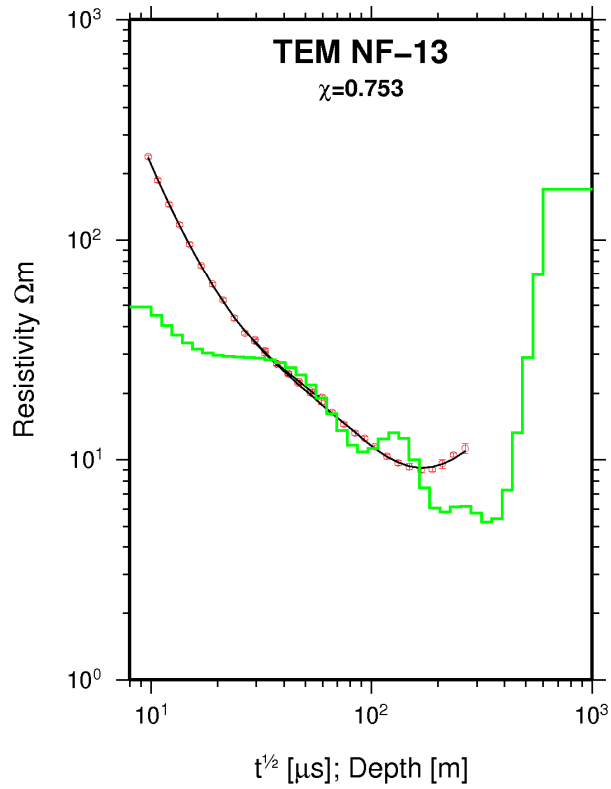
These are appendices to the report “*Analysing the subsurface resistivity structure on two profiles across the Námafjall high-temperature geothermal field, NE-Iceland, through 1D joint inversion of TEM and MT data*” by Gaetan Sakindi at the UNU Geothermal Training Programme in 2012. Appendix I contains the TEM data and their associated 1D models for 16 TEM soundings covering two NS and WE profiles. Appendix II shows the processed data for 16 MT soundings. Appendix III contains the 1D models of the joint inversion for all TEM and MT data through the NS and WE profiles in Námafjall high-temperature geothermal area.

APPENDIX I: TEM data and their associated 1D models for 16 TEM soundings





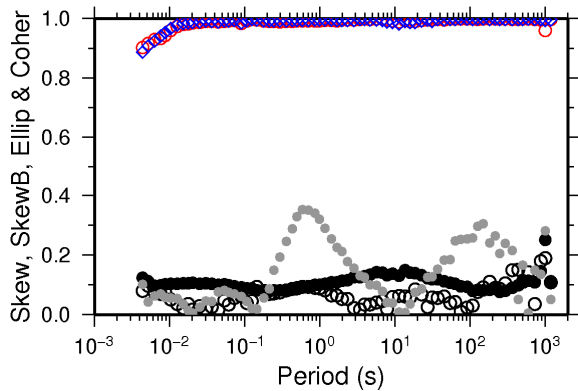
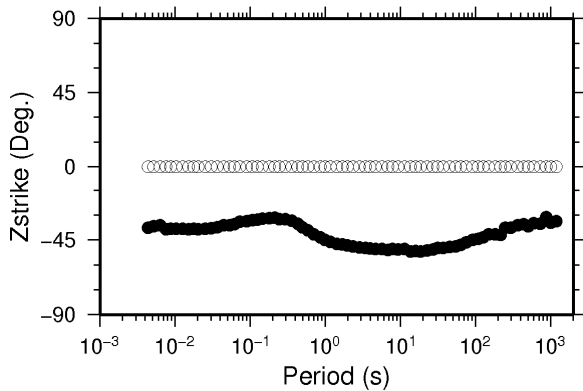
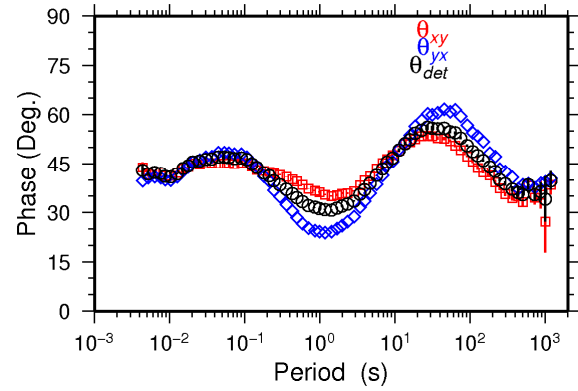
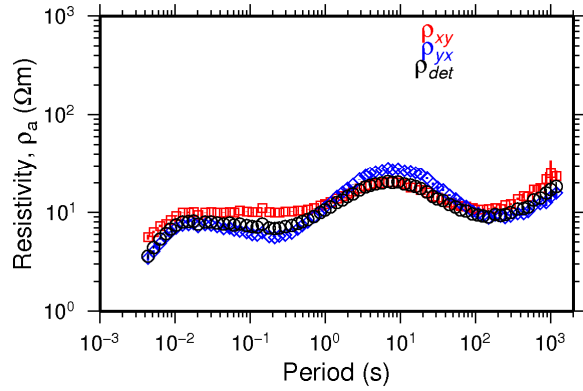




APPENDIX II: Processed data for 16 MT soundings

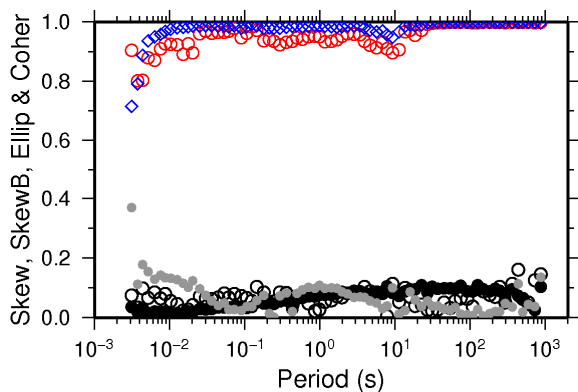
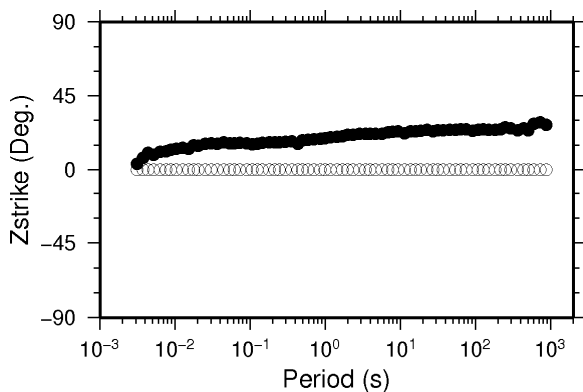
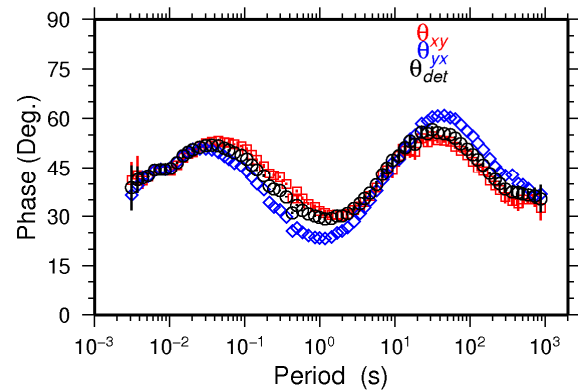
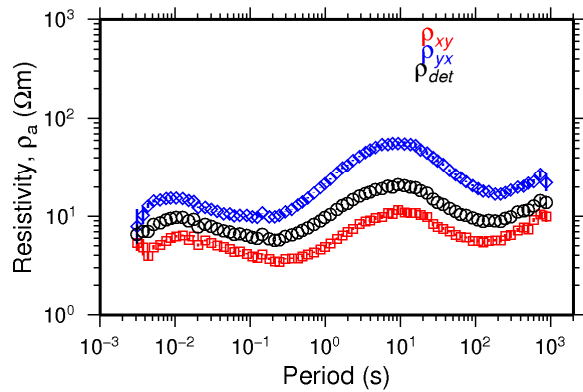
004

Skrá: 004.EDI



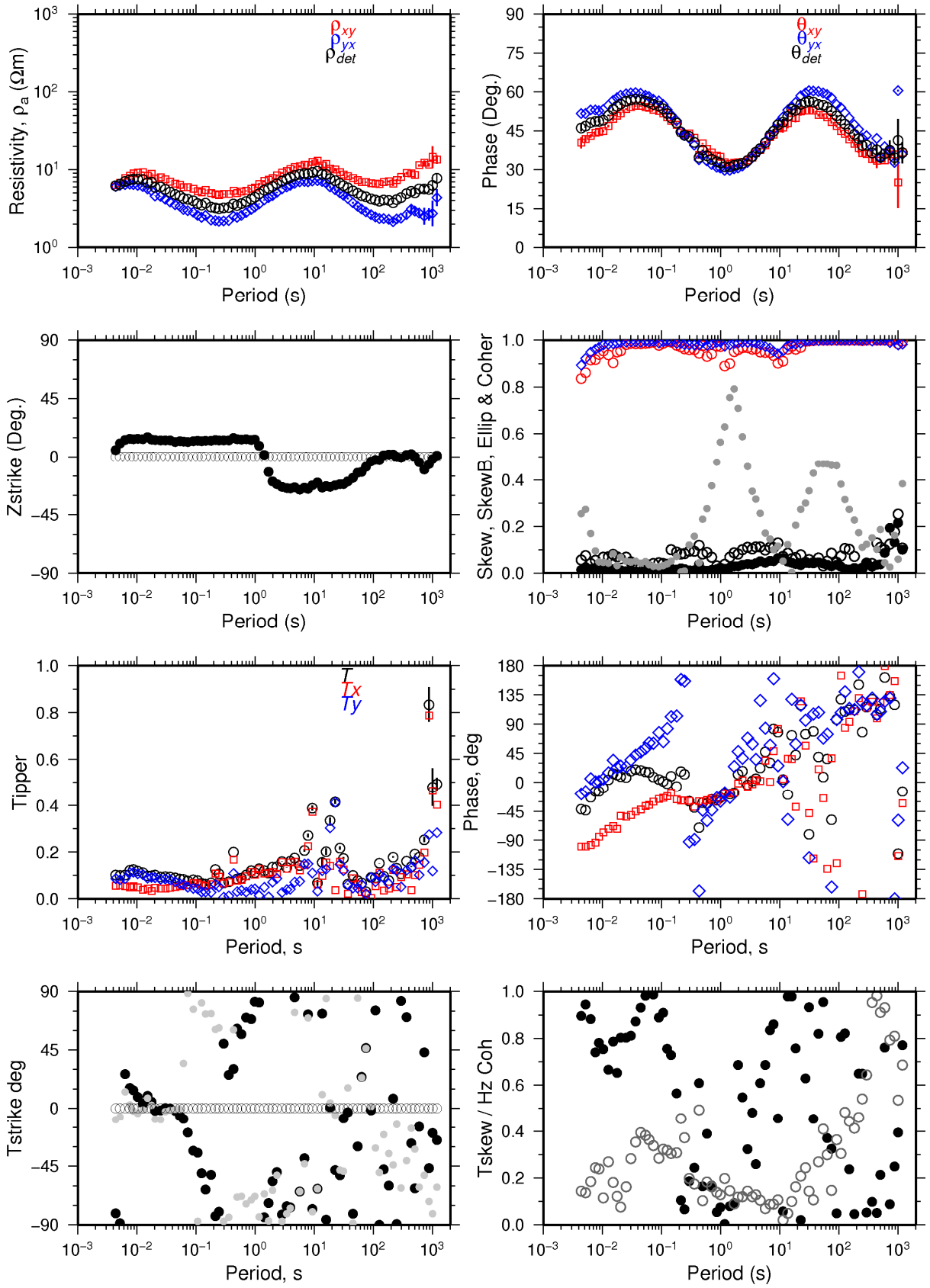
008

Skrá: 008.EDI



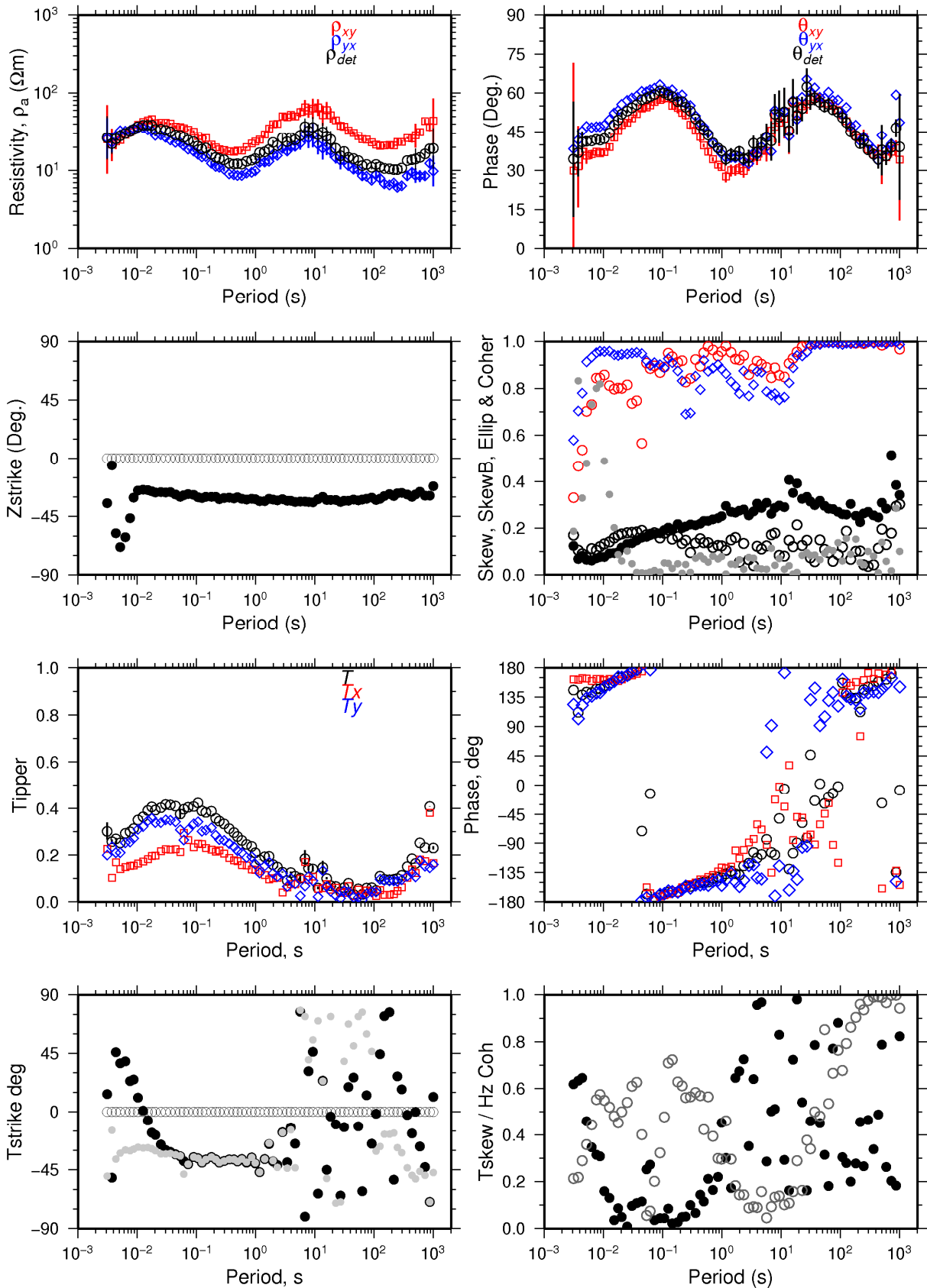
009

Skrá: 009.EDI



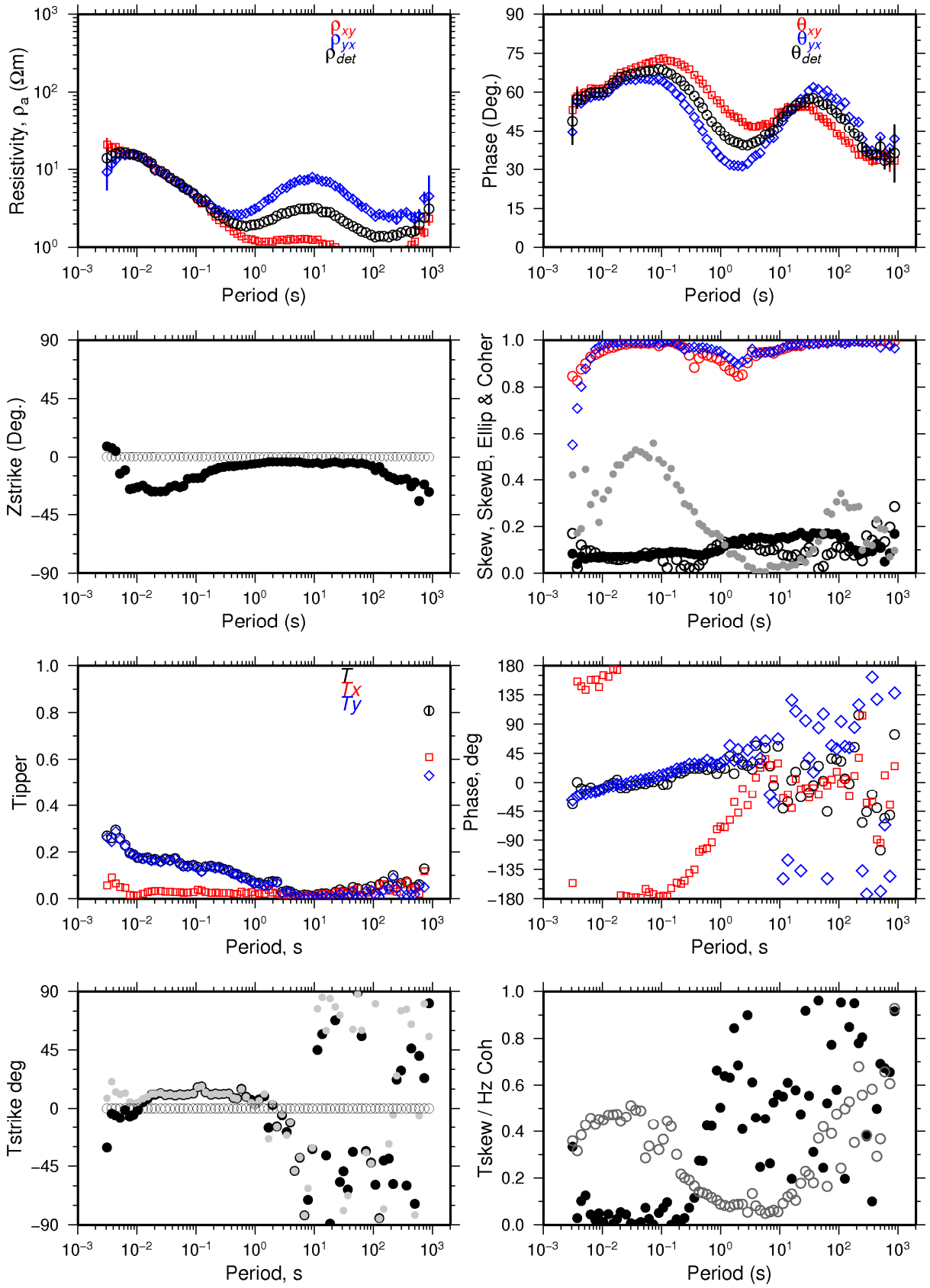
010

Skrá: 010.EDI



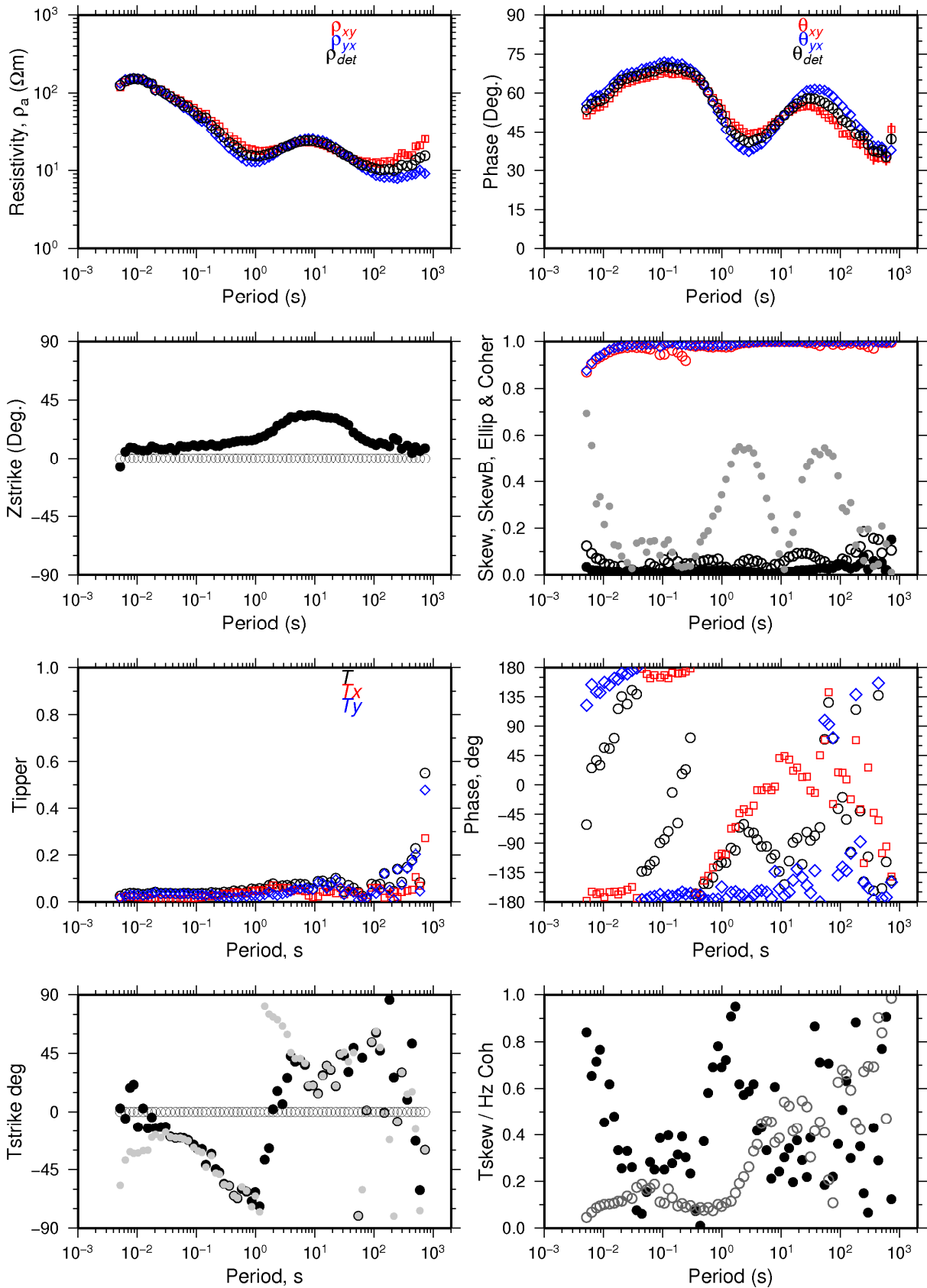
014

Skrá: 014.EDI



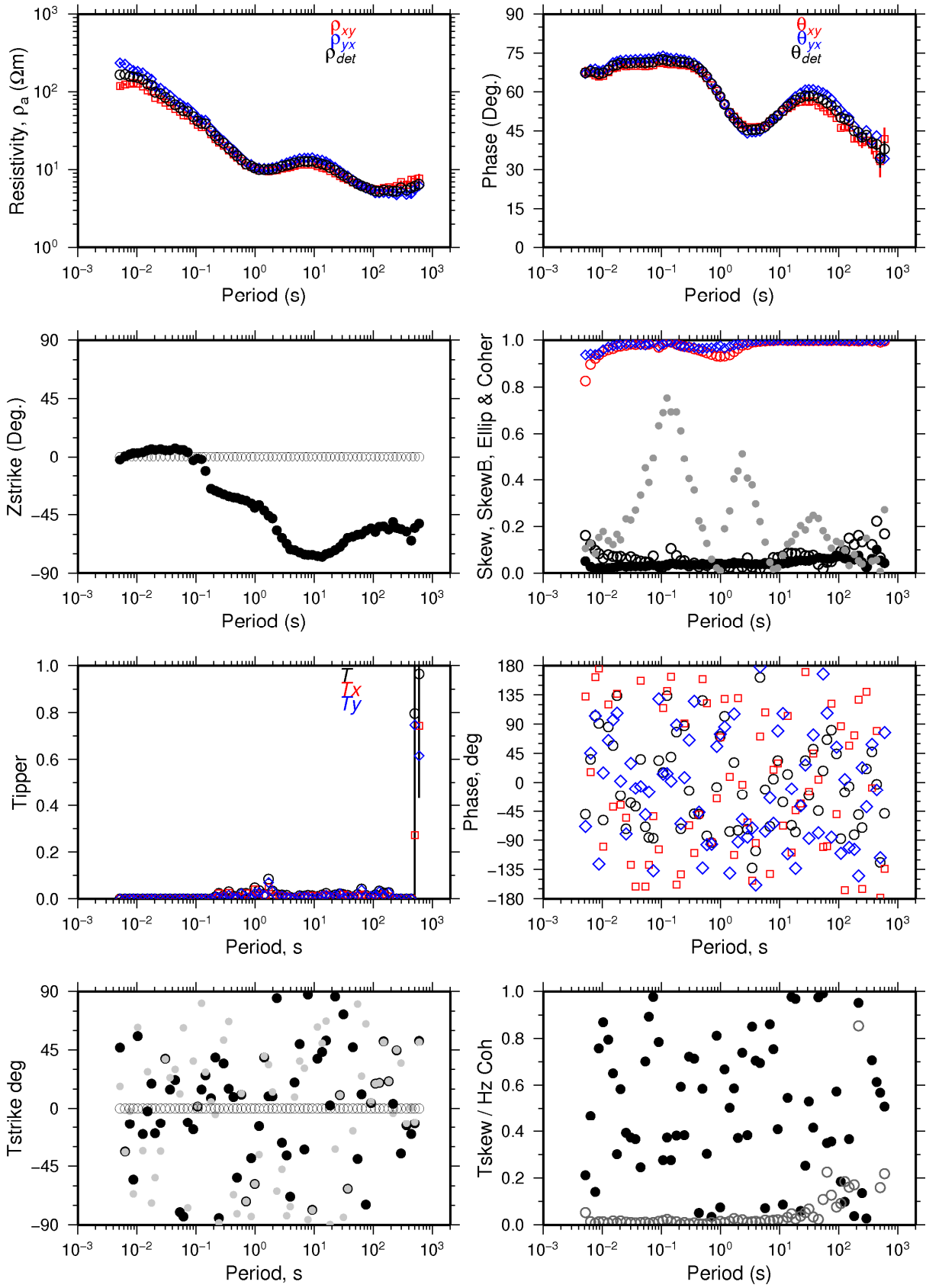
019

Skrá: 019.EDI



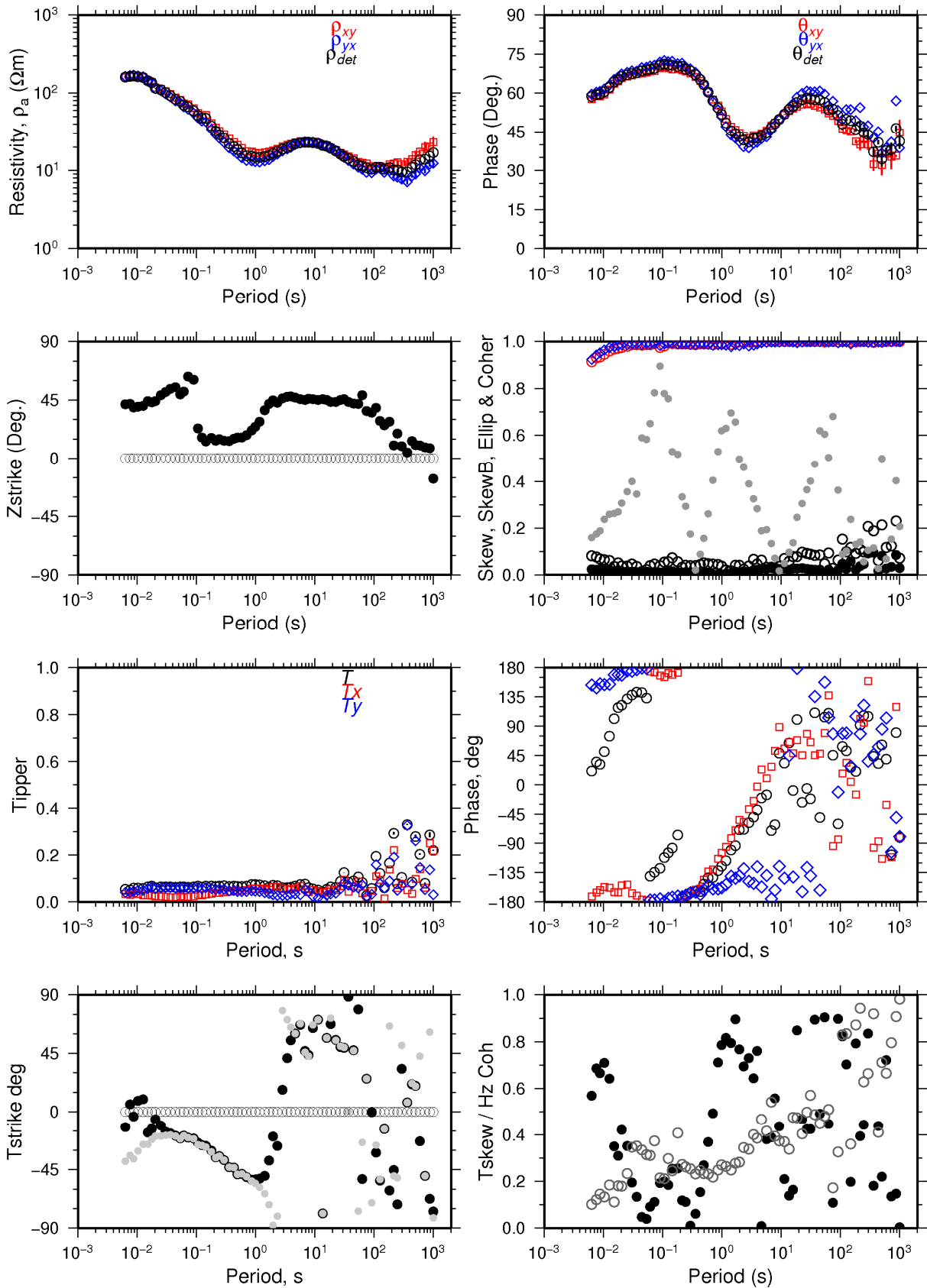
020

Skrá: 020.EDI



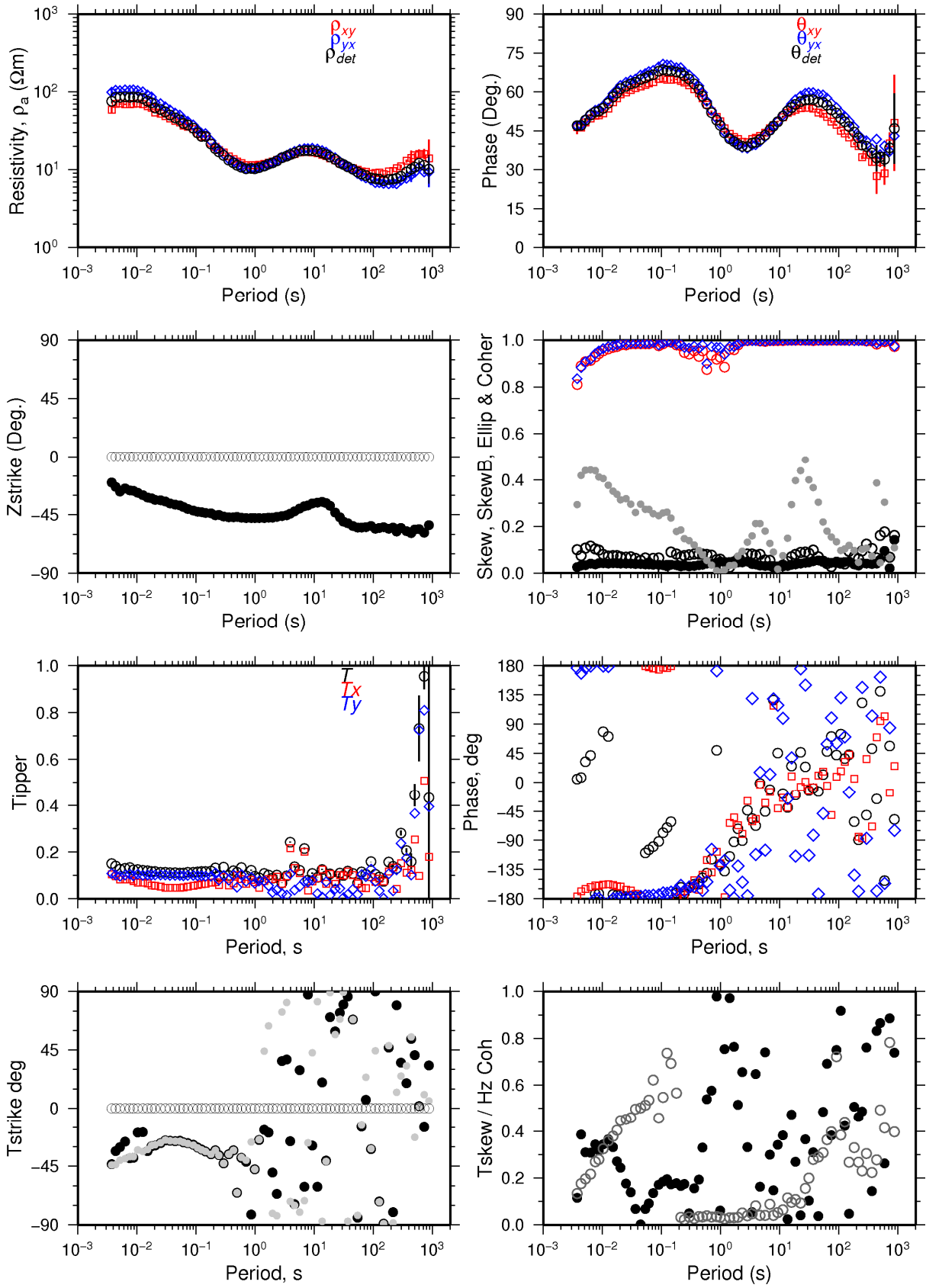
022

Skrá: 022.EDI



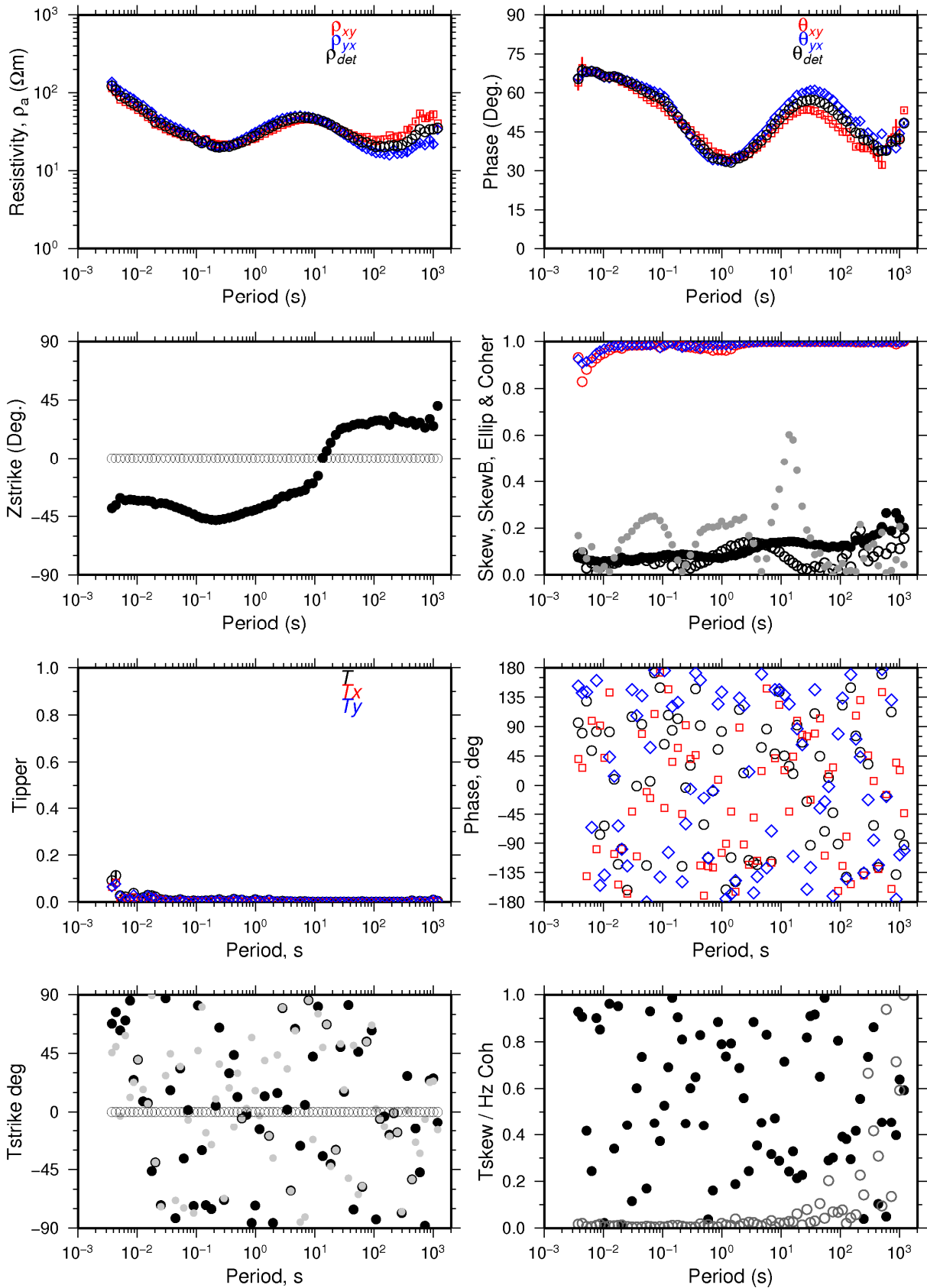
025b

Skrá: 025b.EDI



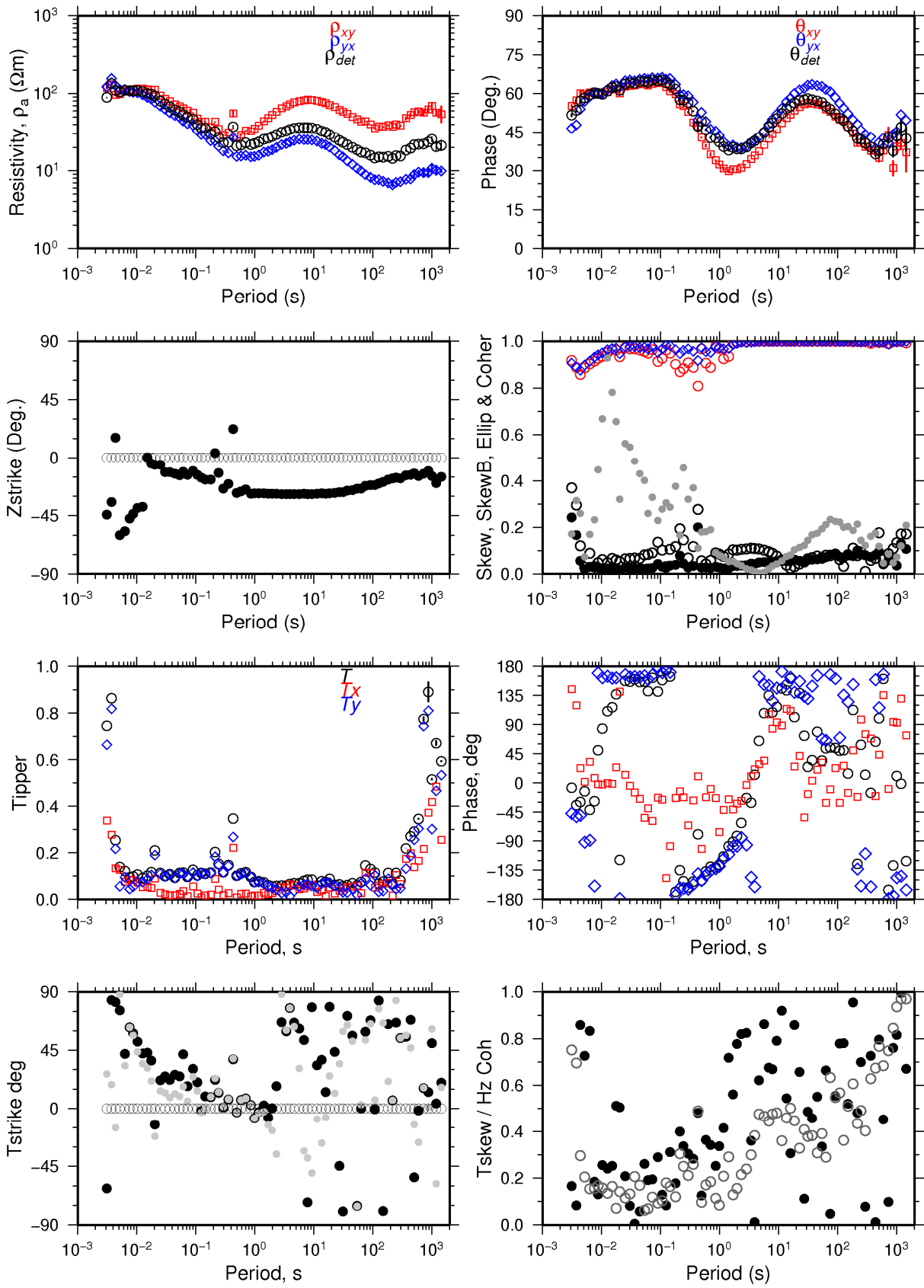
028b

Skrá: 028b.EDI



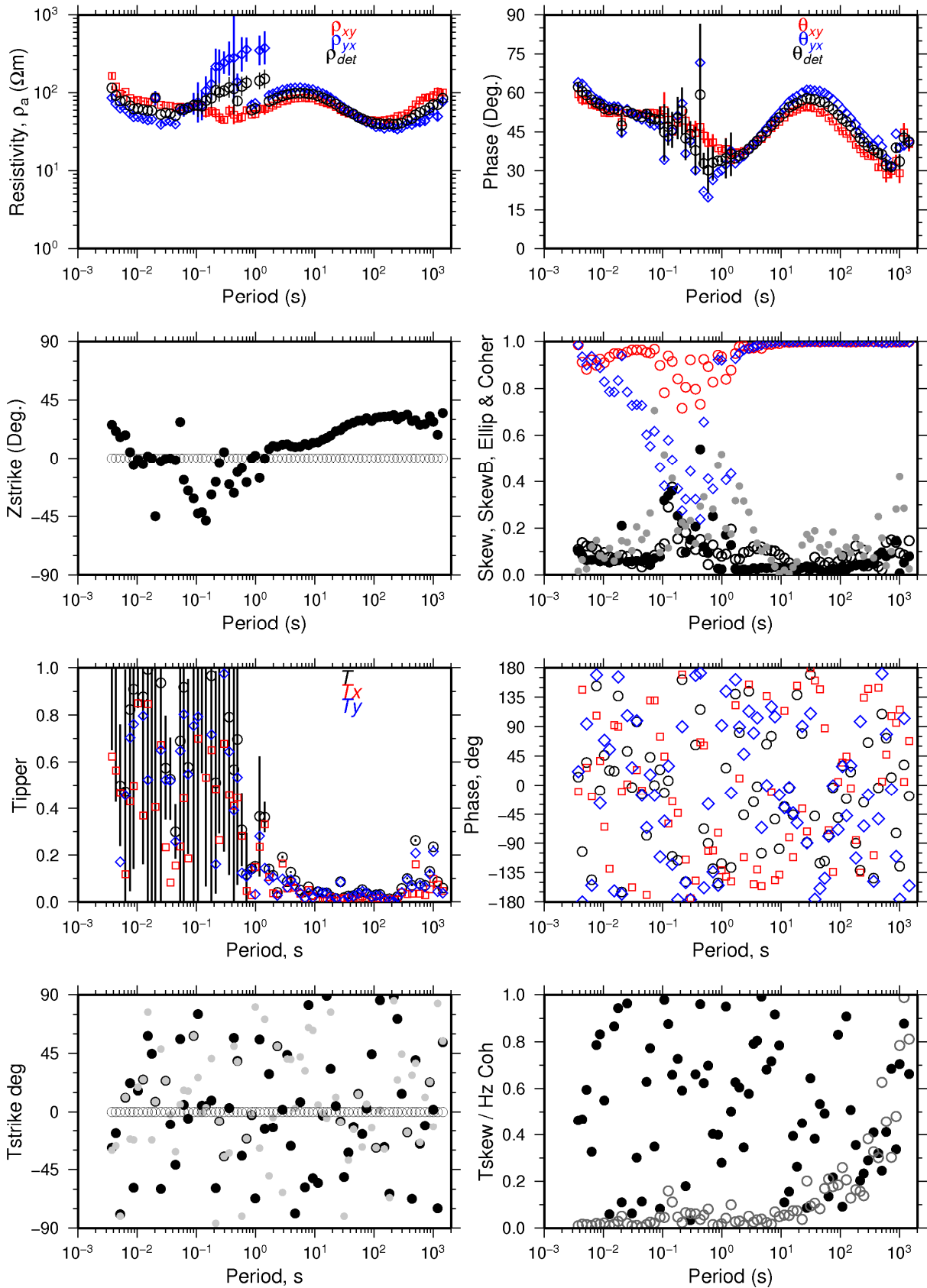
029

Skrá: 029.EDI



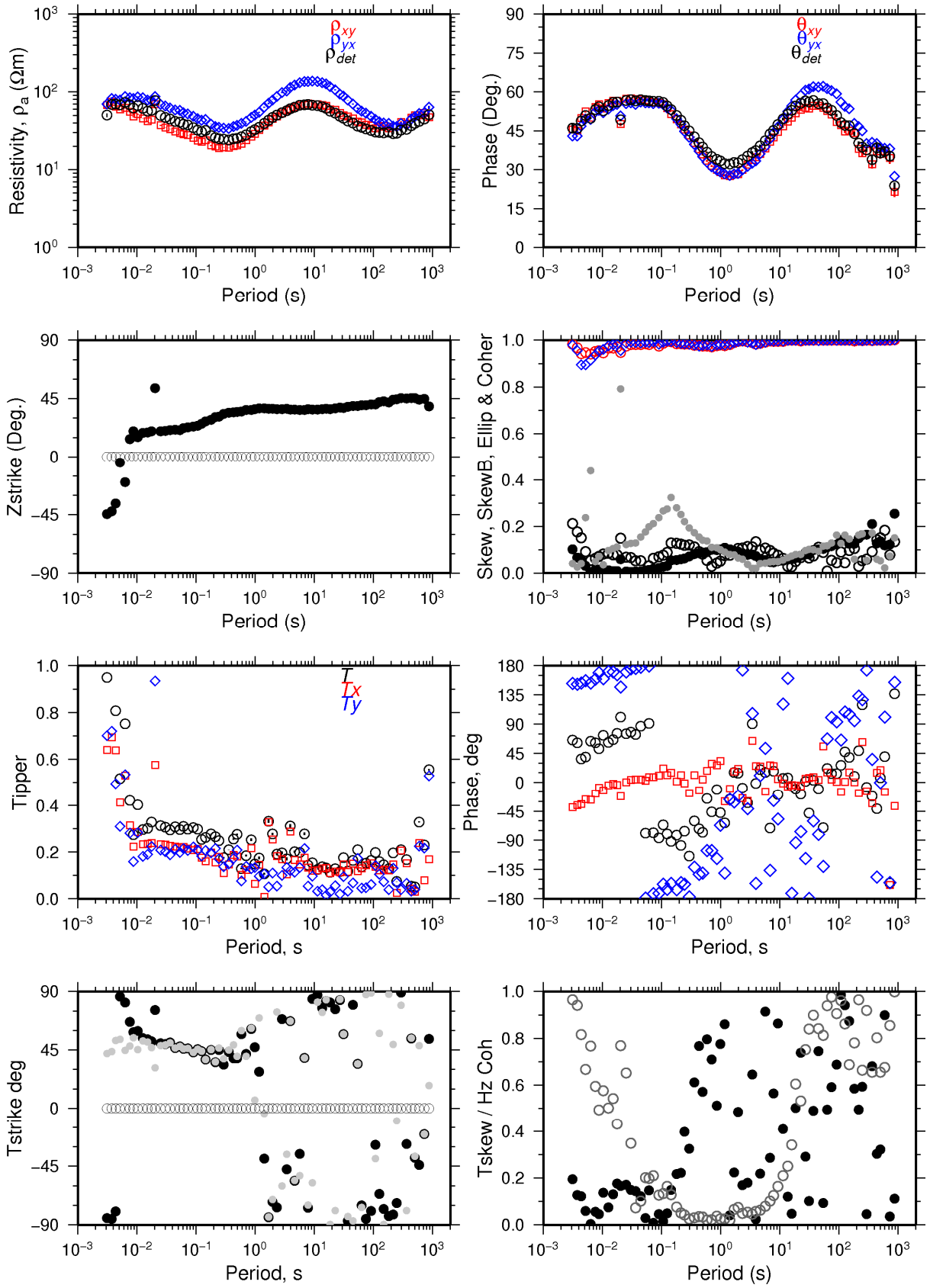
033

Skrá: 033.EDI



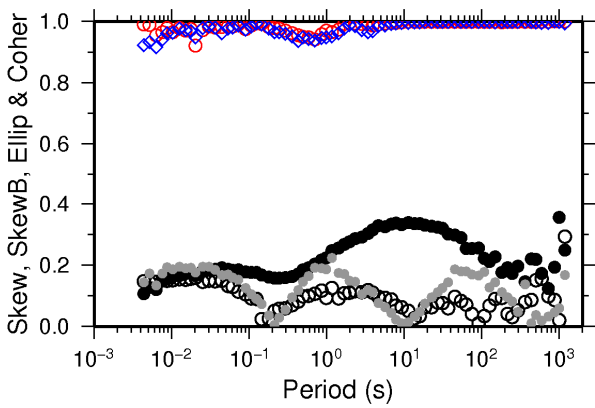
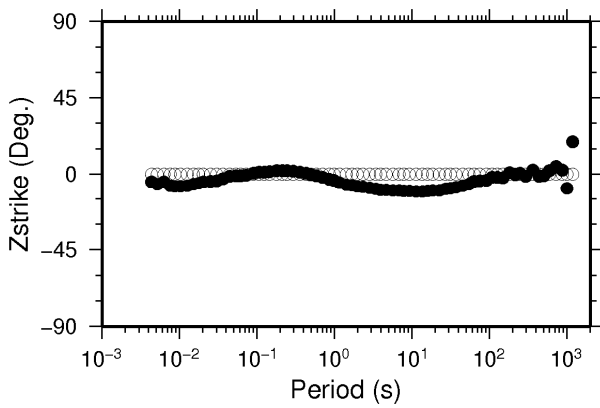
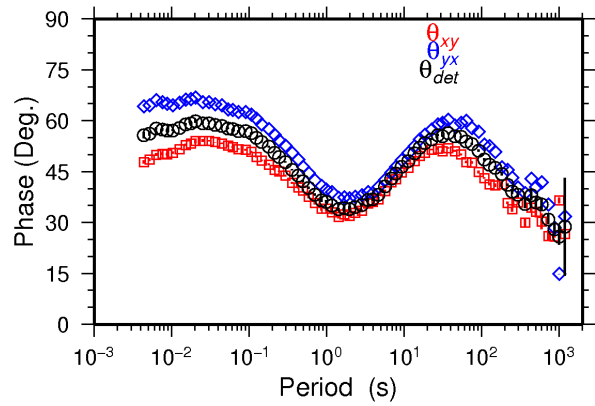
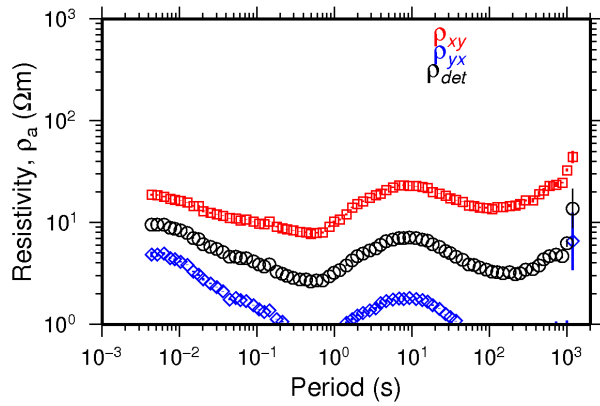
034

Skrá: 034.EDI



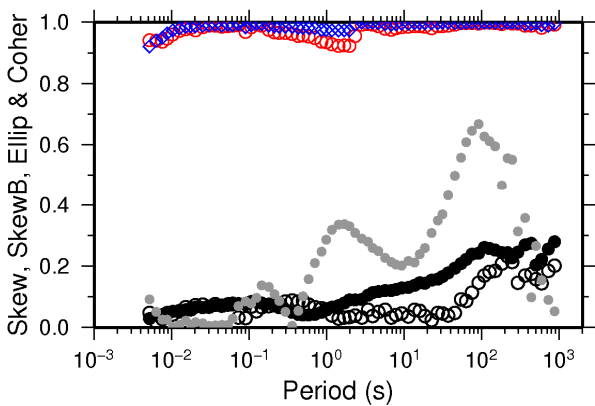
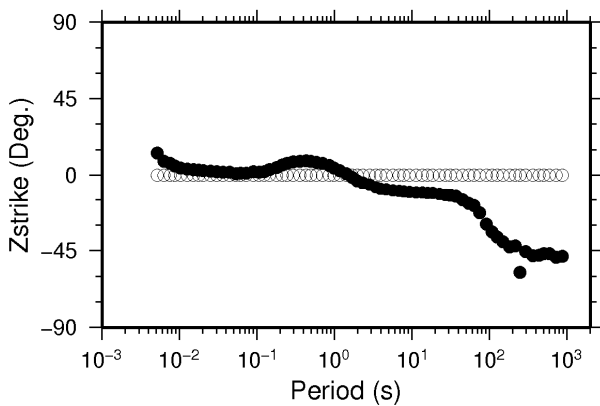
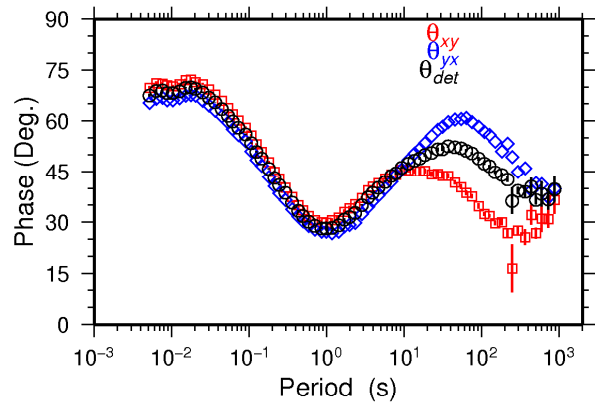
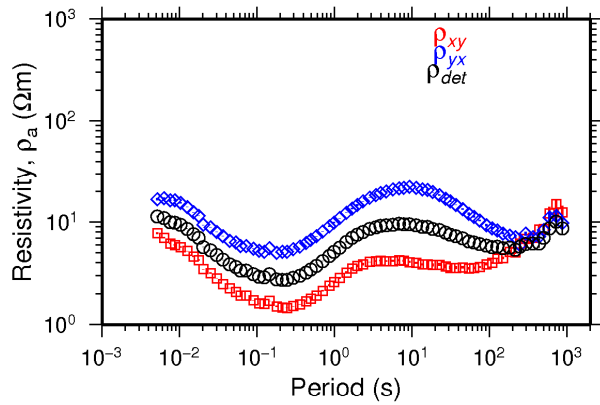
035

Skrá: 035.EDI



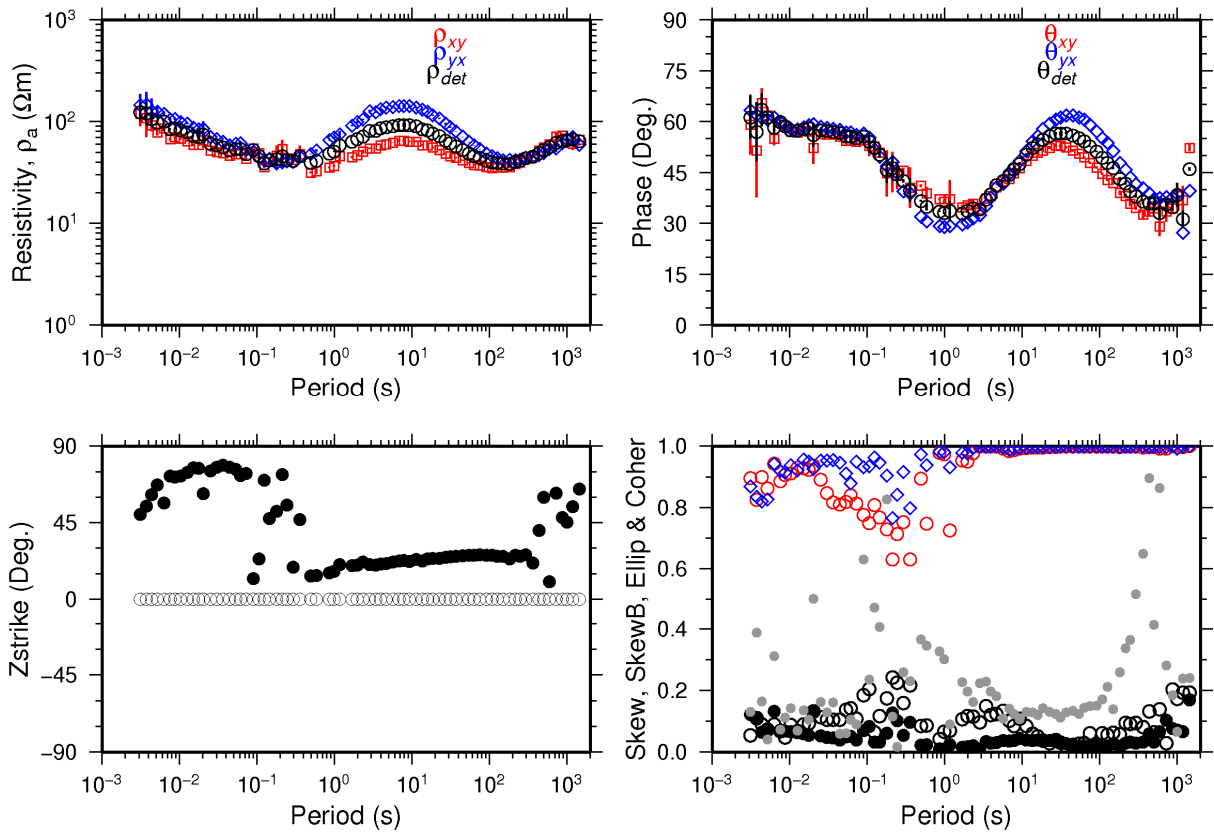
109

Skrá: 109.EDI



nam131

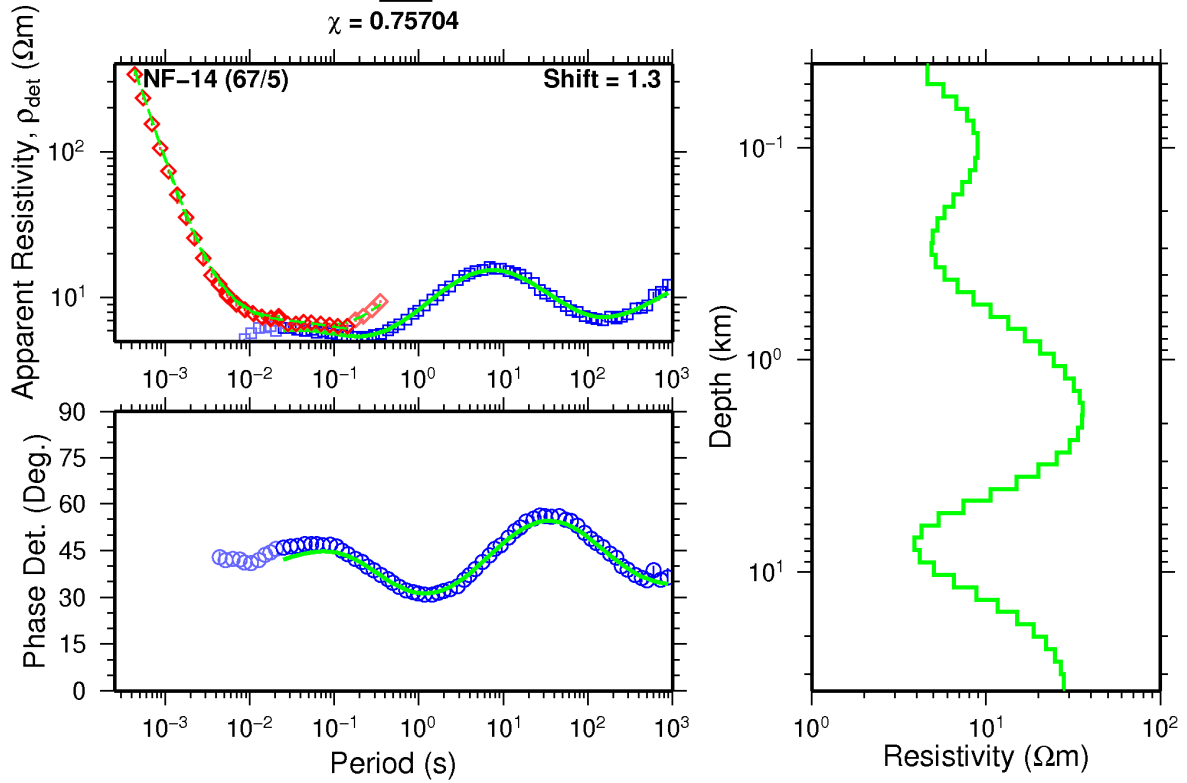
Skrá: nam131.EDI



APPENDIX III: 1D models of the joint inversion for all 16 TEM and 16 MT soundings

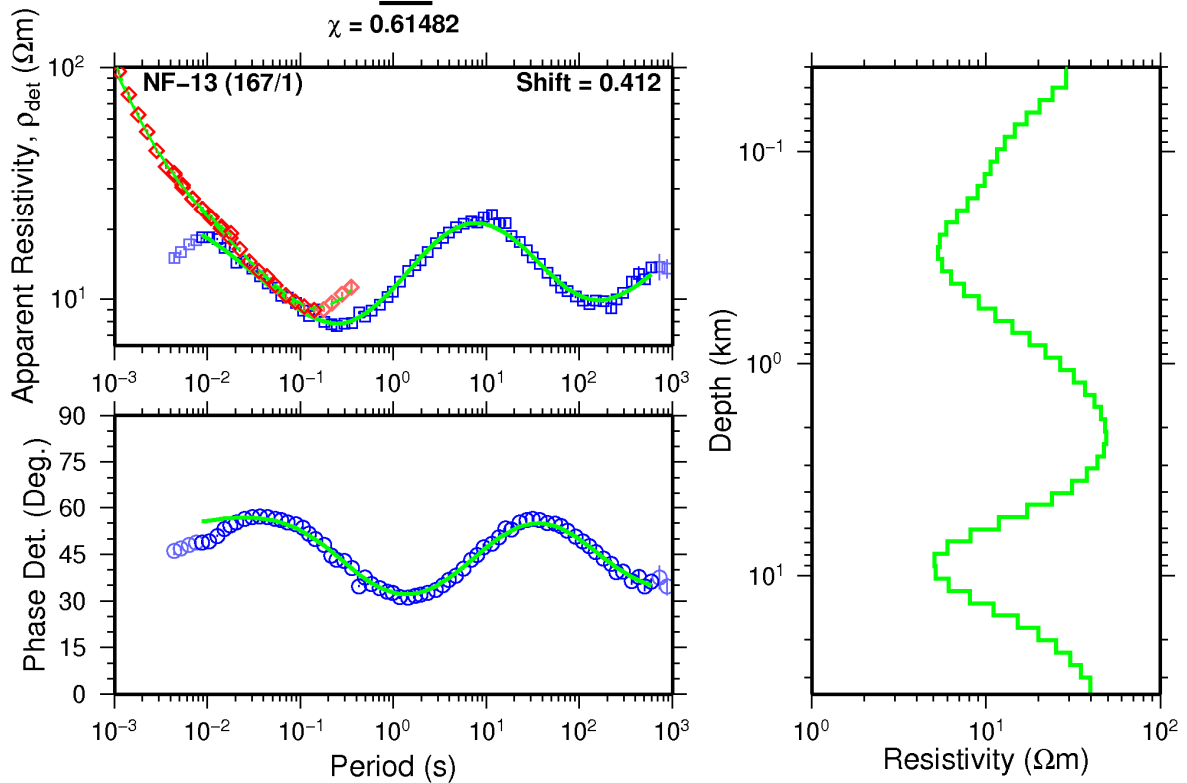
004_out

$\chi = 0.75704$



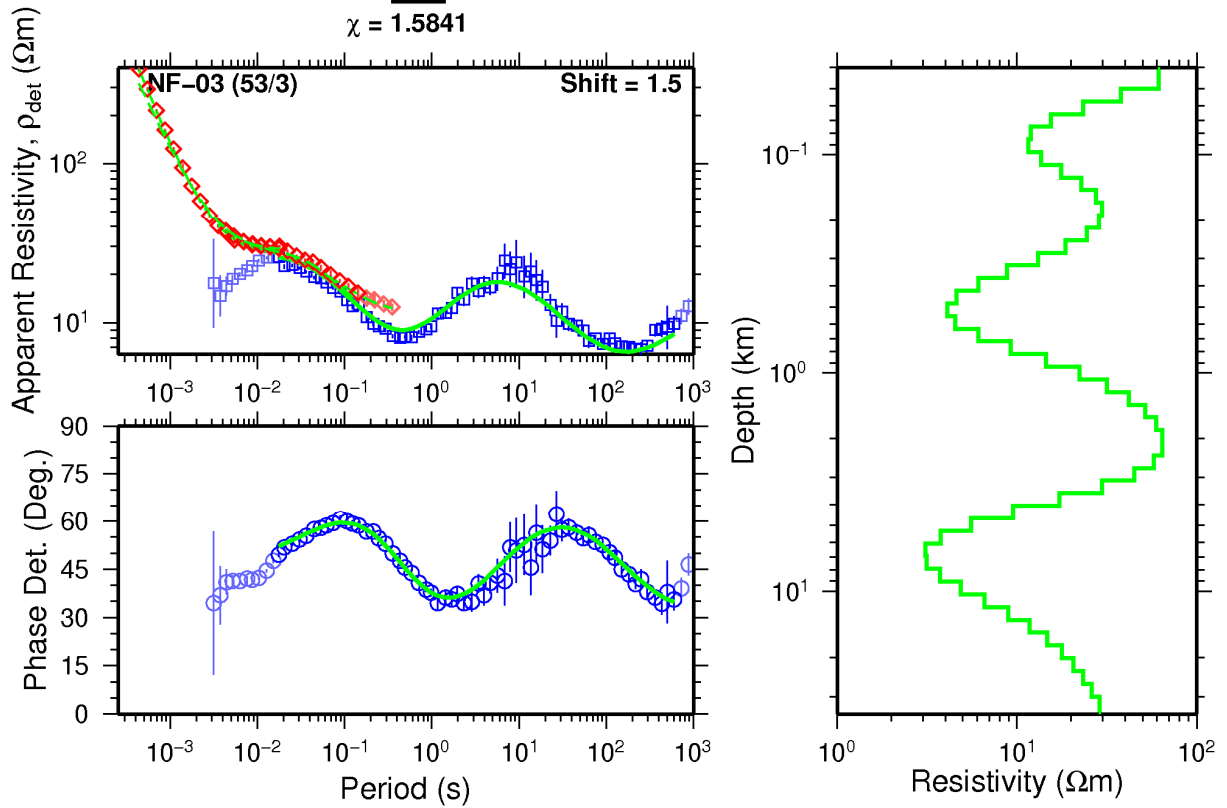
009_out

$\chi = 0.61482$



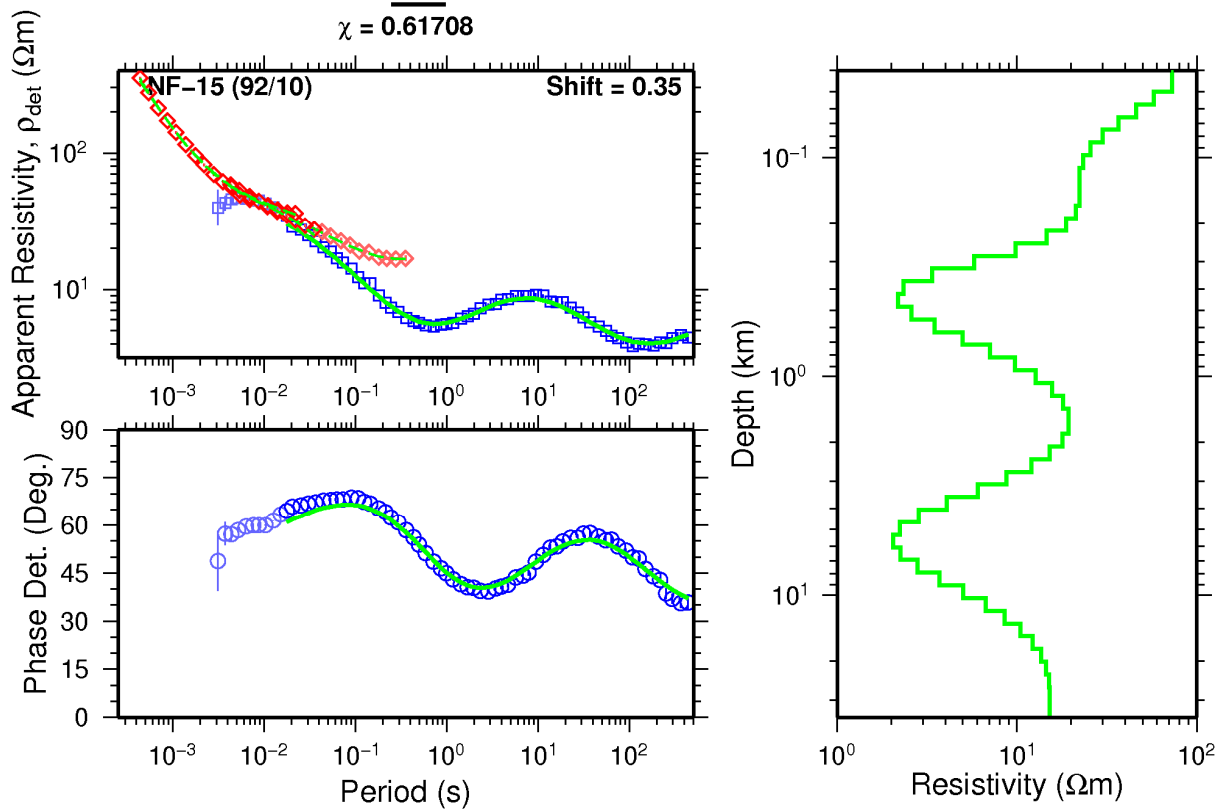
010_out

$\chi = 1.5841$



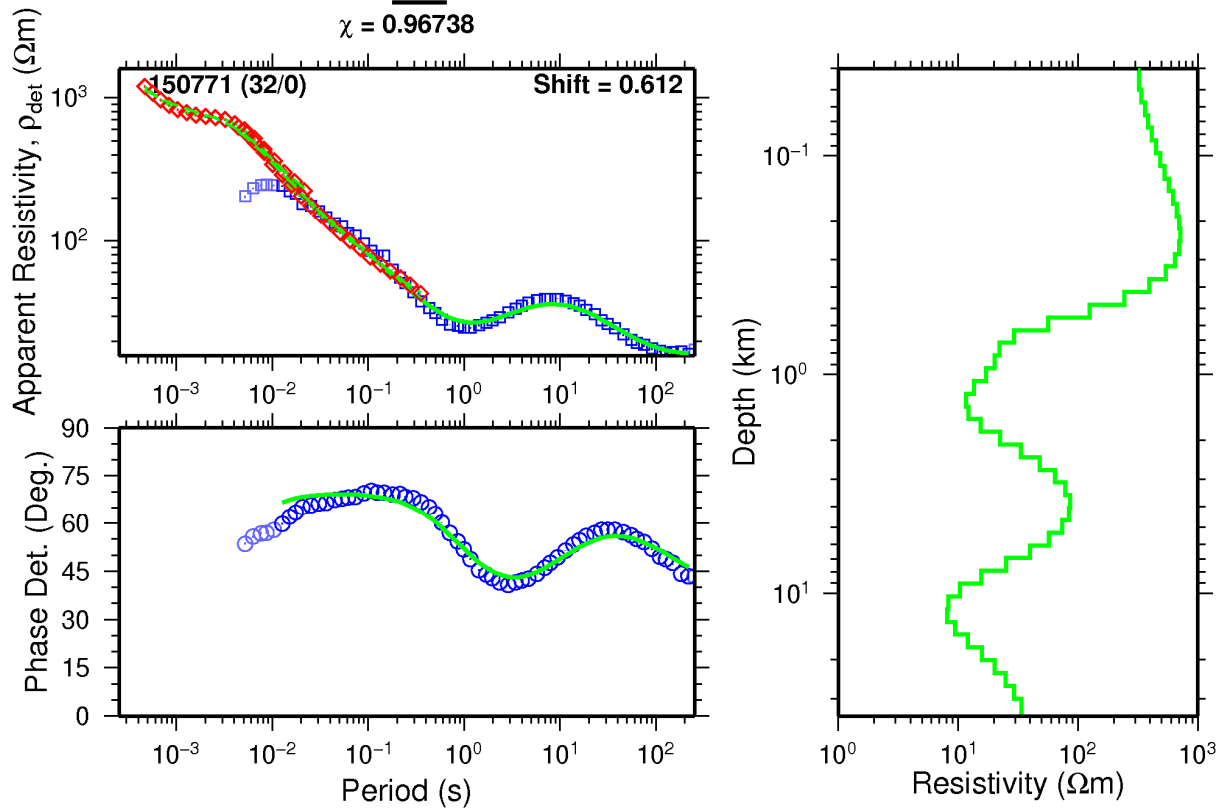
014_out

$\chi = 0.61708$



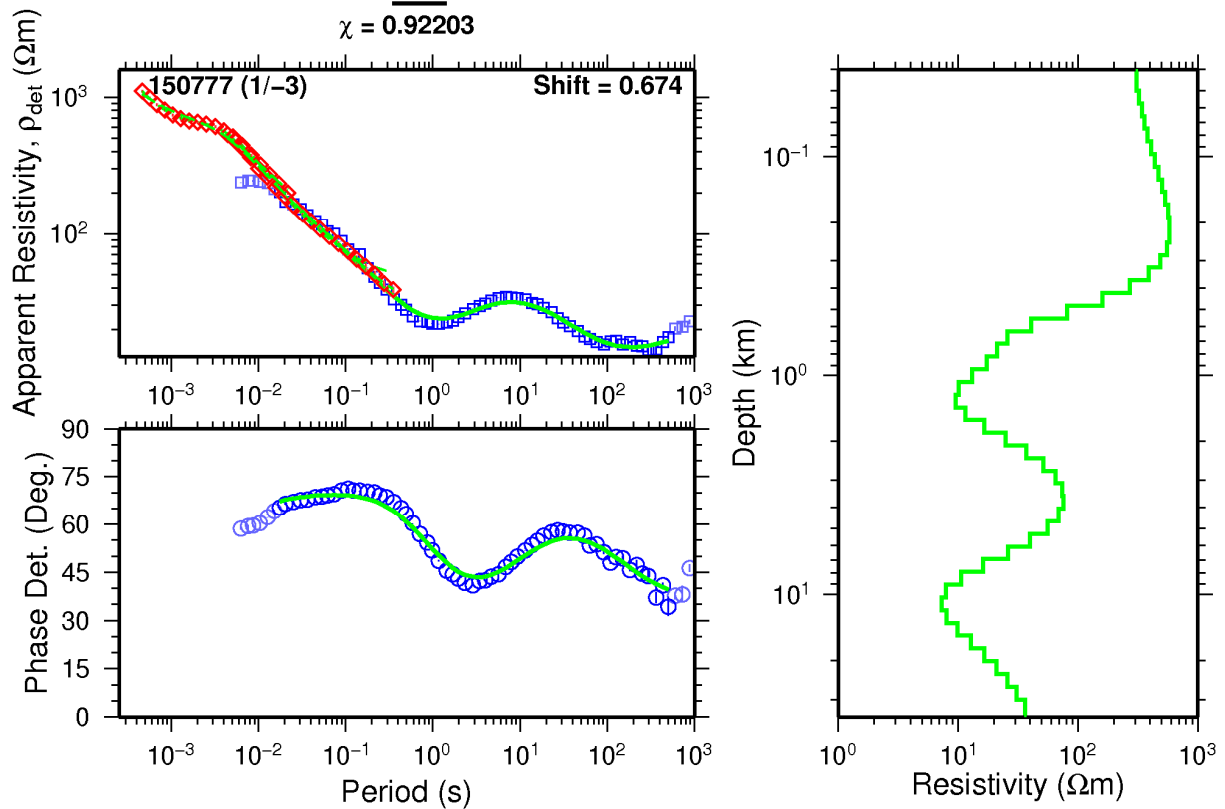
019_out

$\chi = 0.96738$



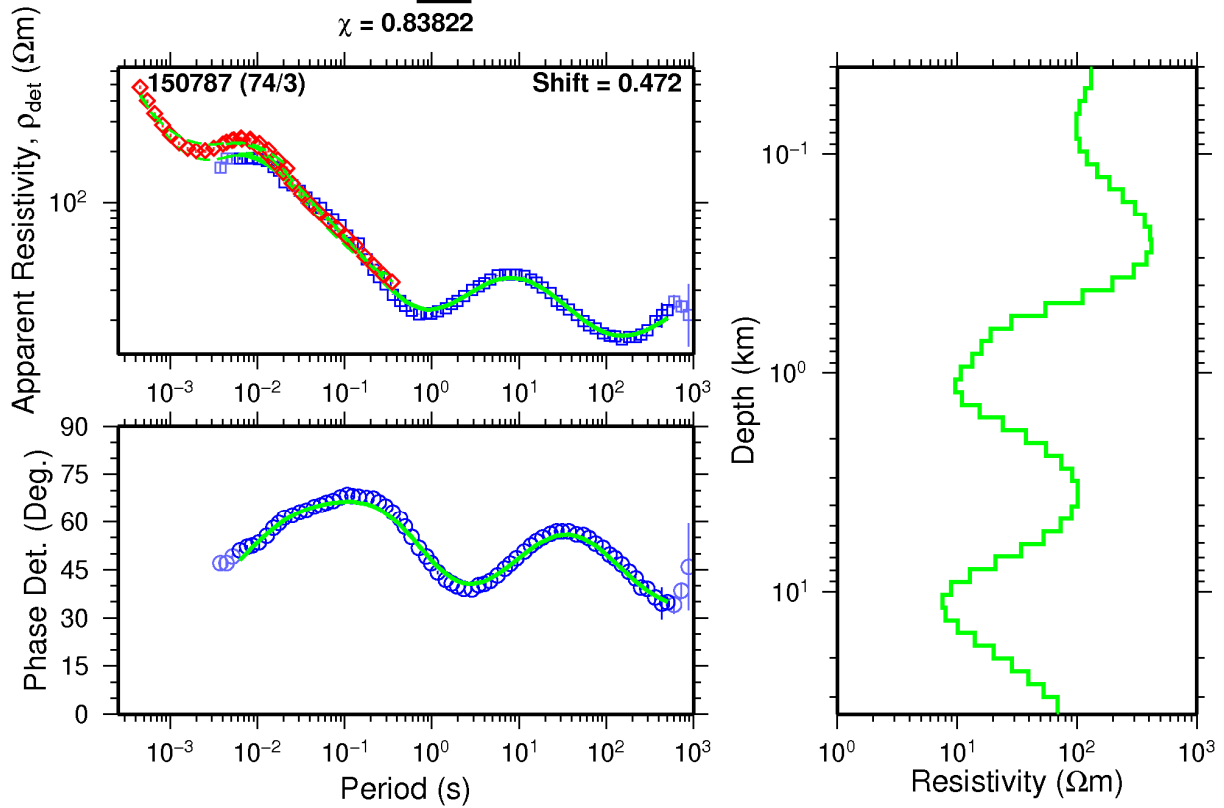
022_out

$\chi = 0.92203$



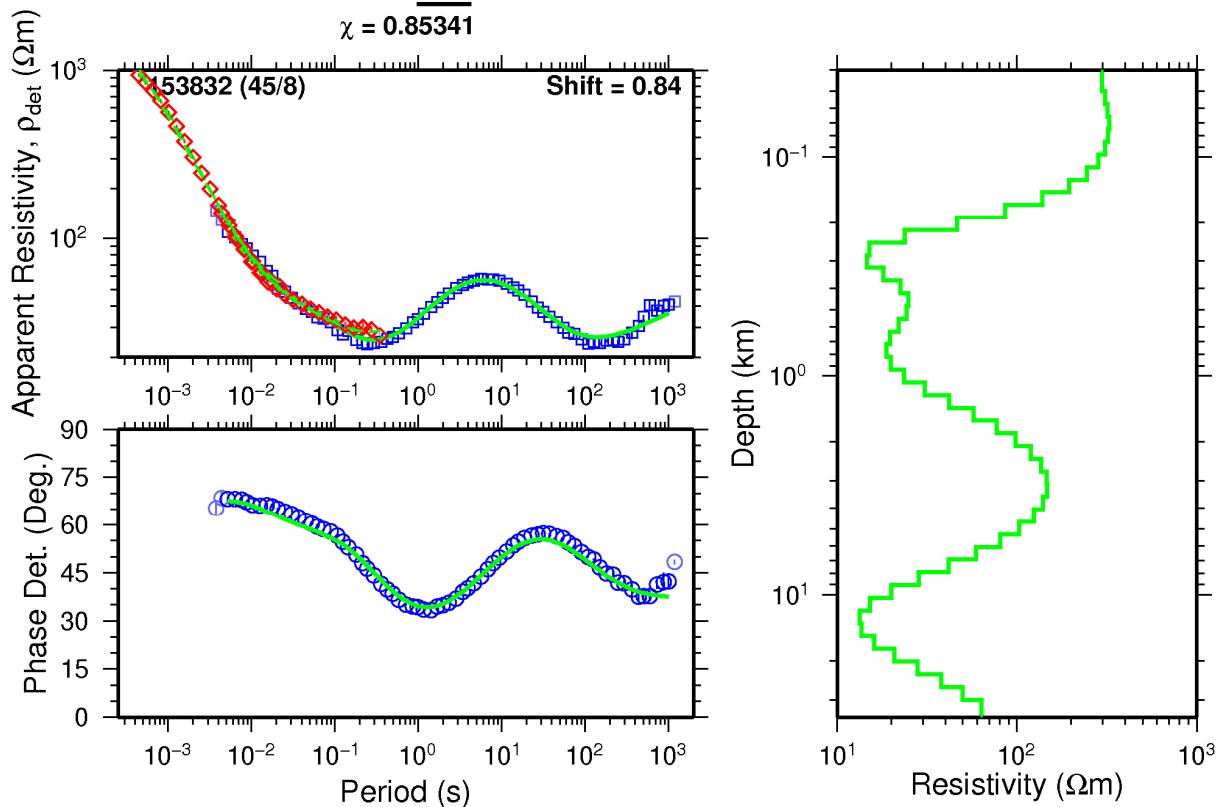
025b_out

$\chi = 0.83822$



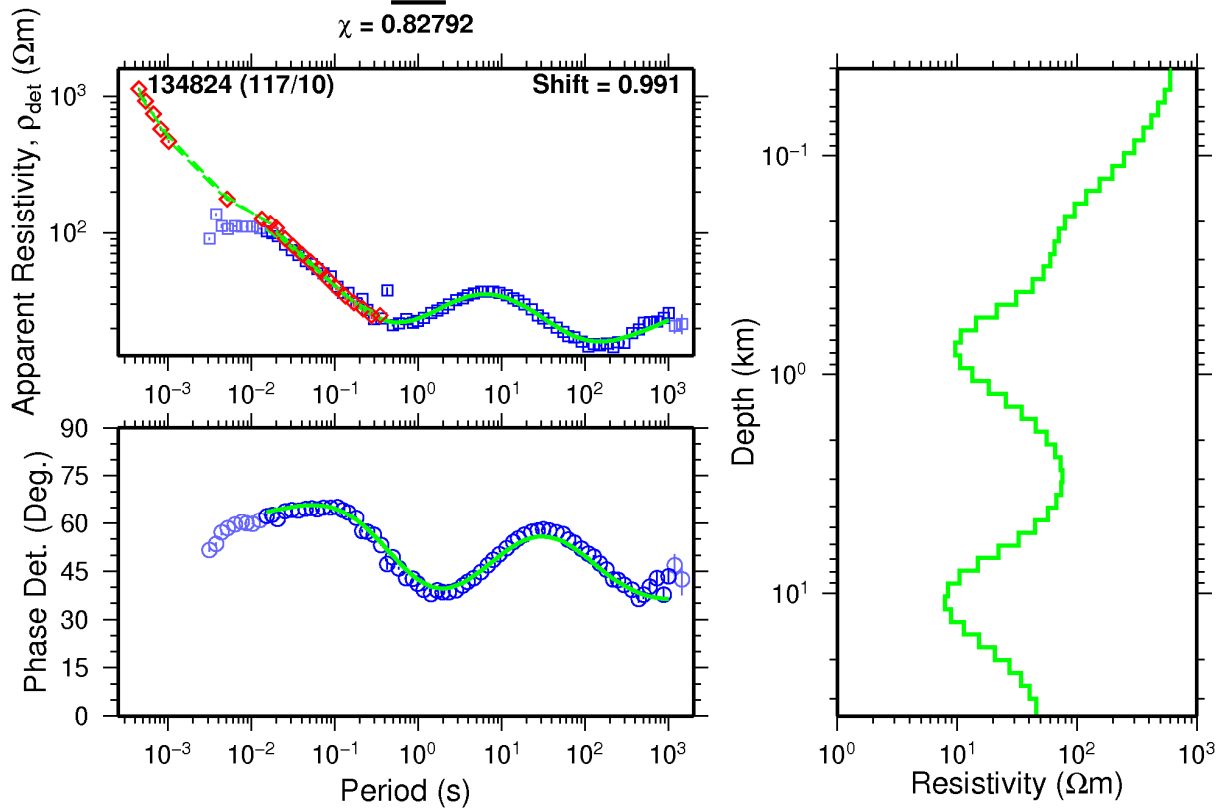
028b_out

$\chi = 0.85341$



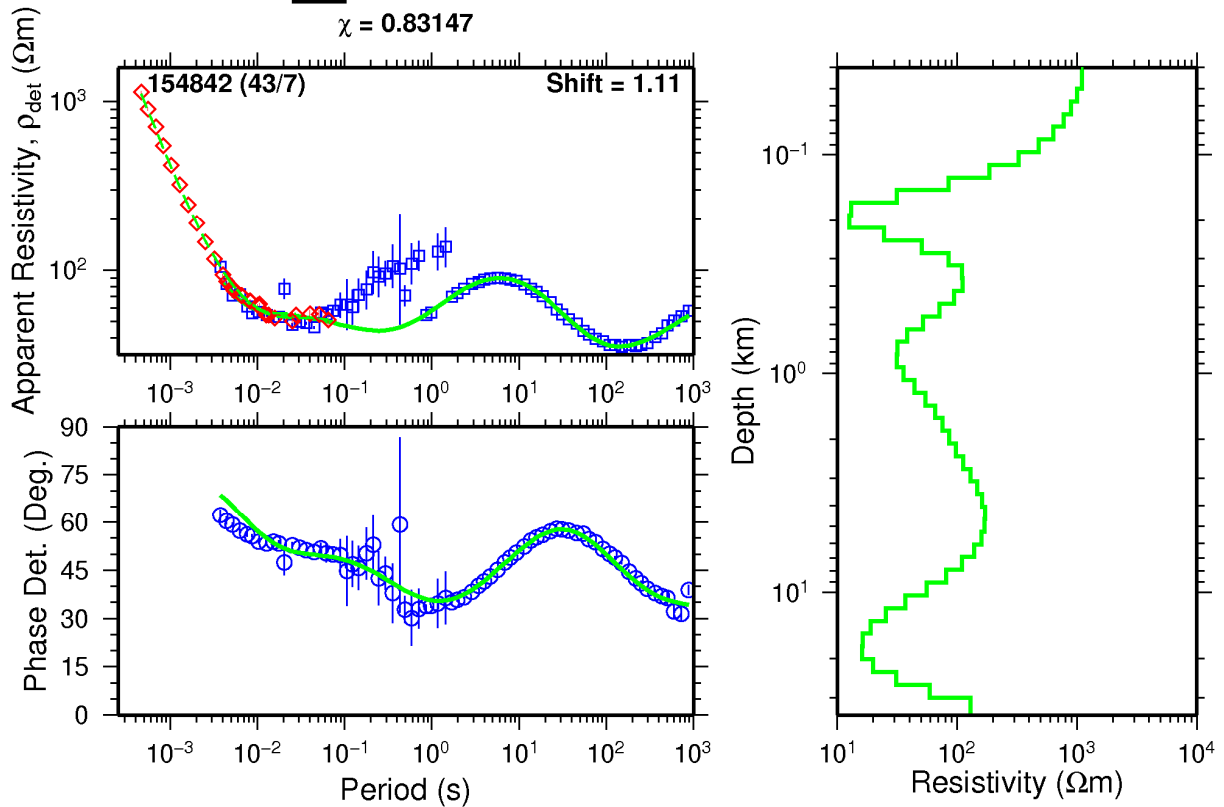
029_out

$\chi = 0.82792$



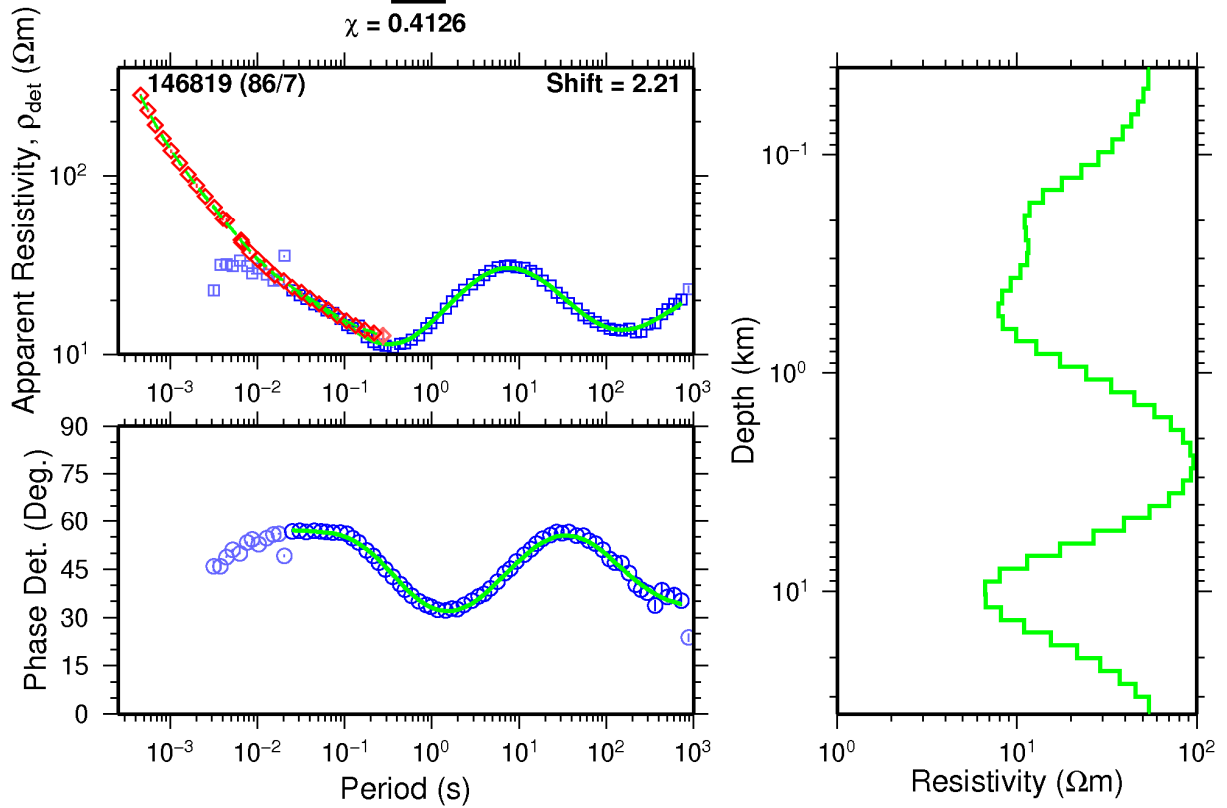
033_out2c11

$\chi = 0.83147$



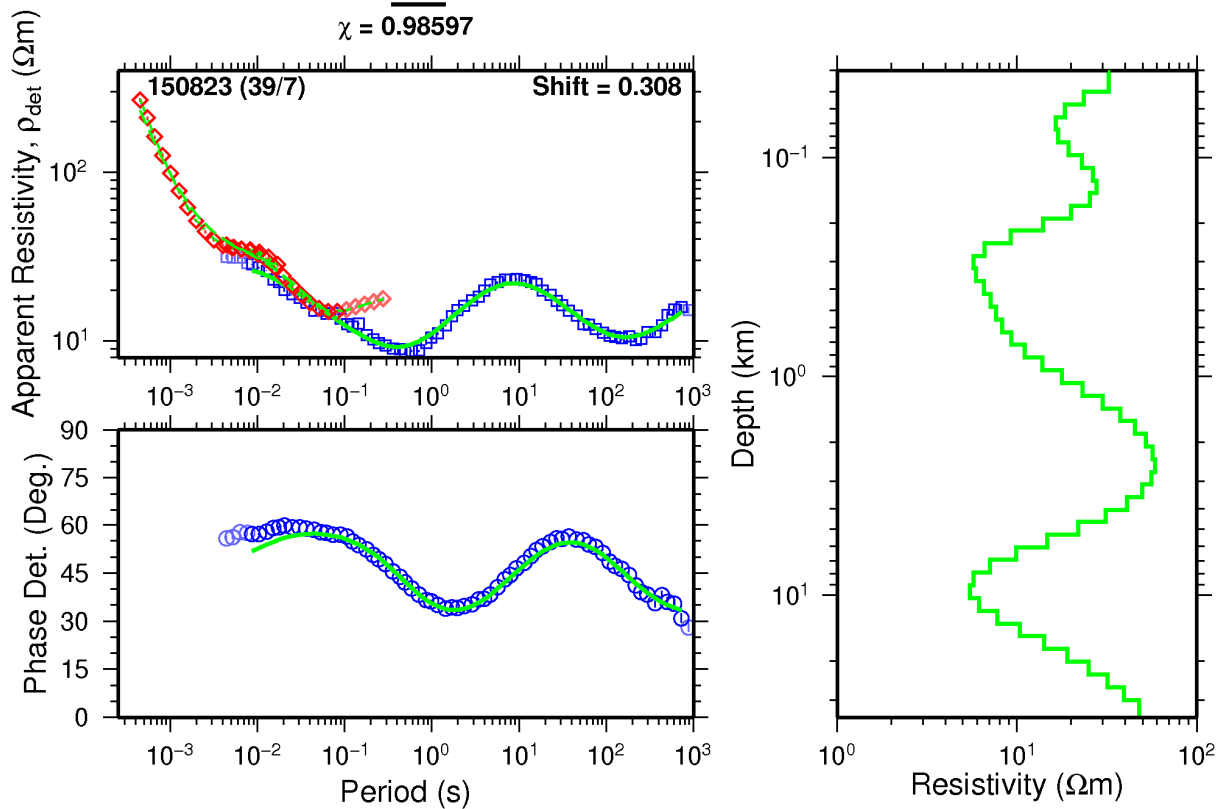
034_out

$\chi = 0.4126$



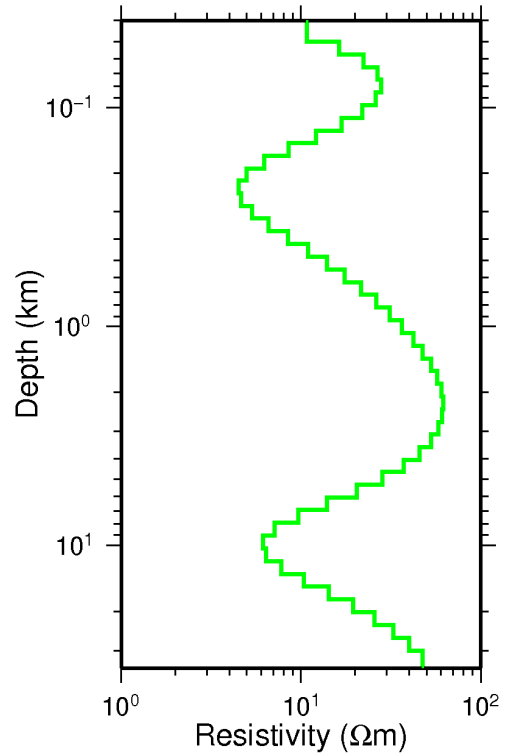
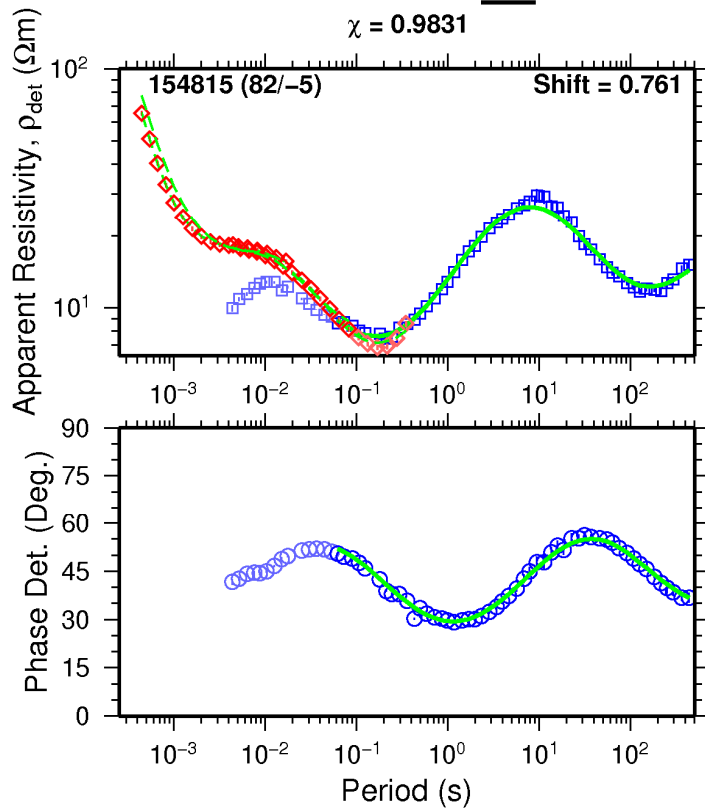
035_out

$\chi = 0.98597$



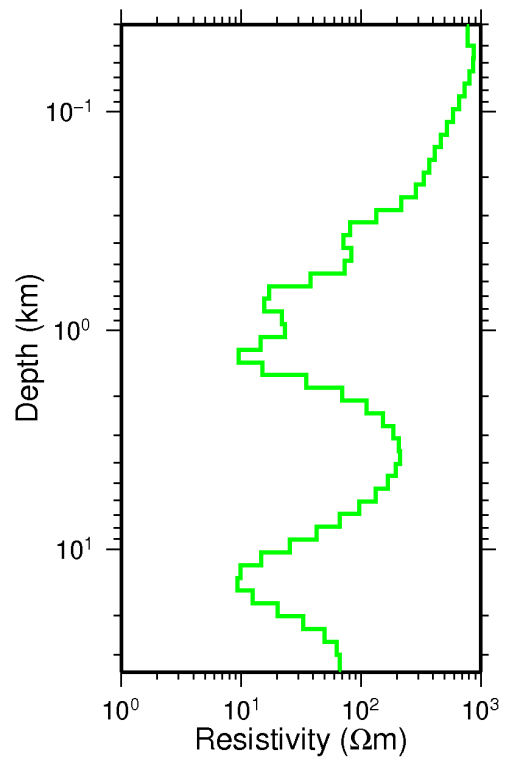
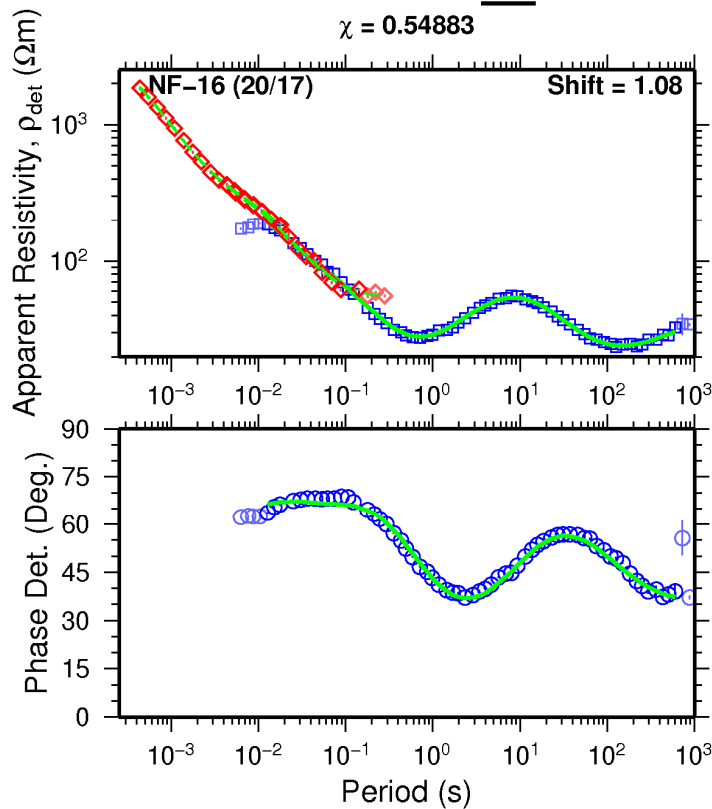
nam008_out

$\chi = 0.9831$



nam109_out

$\chi = 0.54883$



nam131_out

$\chi = 1.12$

