

Raforkumálastjóri
Vatnamælingar

H V Í T Á, Á R H R A U N

P V E R S N I Ð

Reykjavík 19. des. 1960

S. Rist

Raforkumálastjóri
Vatnamælingar
10.1.61

SKILAGREIN 208
HVÍTA, ÁRHRAUN, ÞVERSNID
SR/sg

Dagana 27. ág. - 1. sept. 1960 mældu vatnamælingar 18 þver-
snið hjá Árhrauni.

0-punktur breiddar eru á vinstri bakka (Skeiðamegin) og
eru merktir V1 til V18.

Á hægri bakka (Hestfjalli) eru punktarnir H1 til H18.
Sjá teikn. Fnr. 5252.

Hæll nr.	Hæð hæls m y.s.	Vegalengd m frá V18 (eftir árbakka)	Vatnsborðsstaða m y.s. 24. sept. '60
V1	48,59	1781	48.07
V2	50,75	1629	48.07
V3	50,52	1483	48.06
V4	49,67	1357	48.02
V5	50,15	1212	47,99
V6	51,33	1130	47,99
V7	50,46	1065	47,98
FMV6	50,54	1035	47,98
V8	51,30	993	47,97
V9	50,72	906	47,95
V10	50,32	851	47,92
V11	51,39	787	47,89
V12	50,64	720	47,87
V13	50,37	664	47,82
V14	50,97	615	47,78
V15	51,99	566	47,66
V16	52,20	520	47,56
V17	50,77	447	47,49
FMV10	49,35	434	47,49
V18	50,95	0	46,50

Hæðar tölur annarra fastra merkja og vegalengd
frá V18 er þessi:

FMV11 (ekki komið upp) (nál. 2500 m)

FmV7
Bauluós 50,17 3330 m

FMV8
Útverk 51,09 5730 "

H-20
brú Fjall 50,84 7830 "

FMV9
Bakkahorn 52,02 10730 "

0-punktur VHm 41

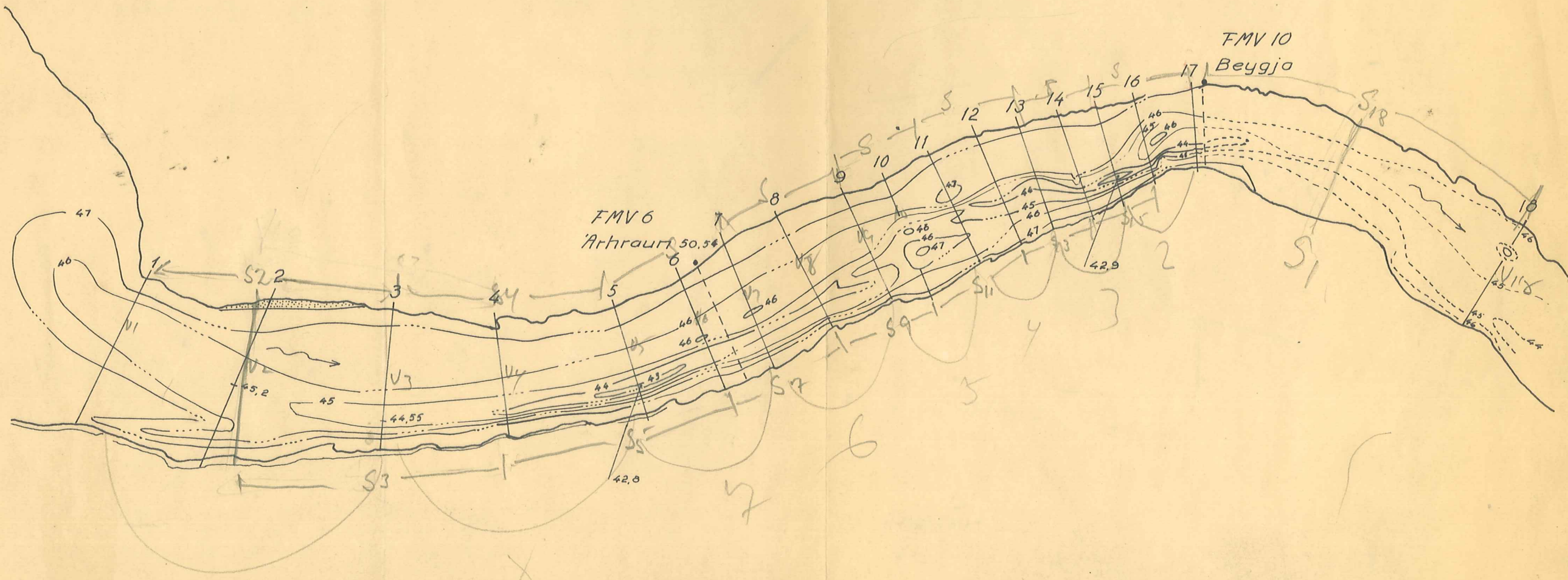
Iða 50,42 16500 "

FMV 1
Kiðjaberg 34,44 7000 " niður eftir

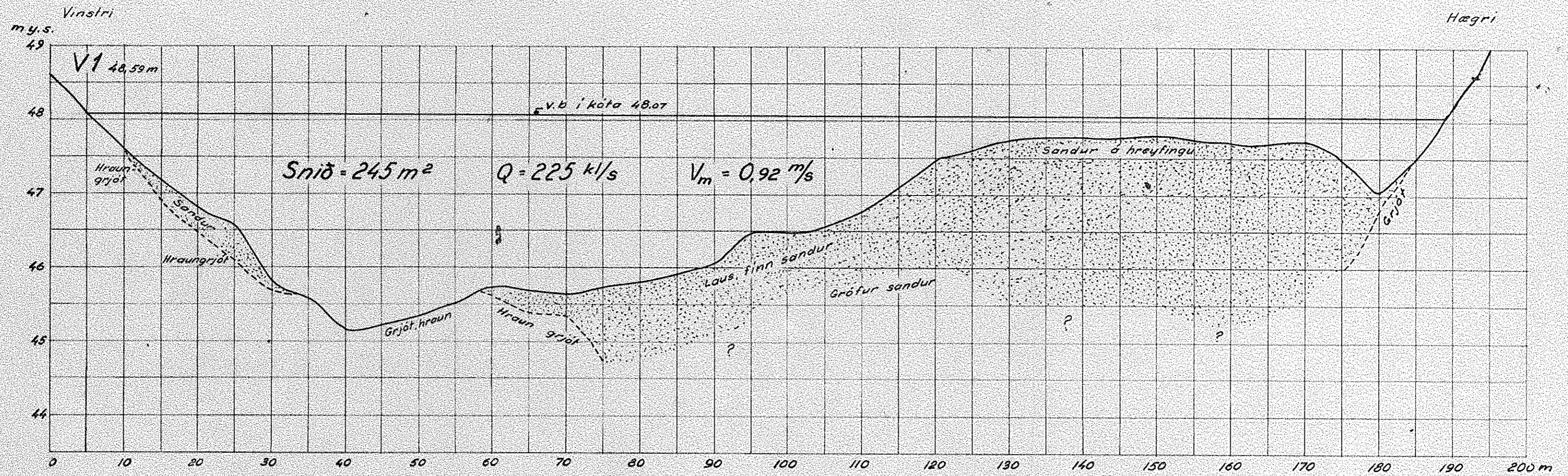
FMH-28 5160 m

Q-23

300
10000
0.3500



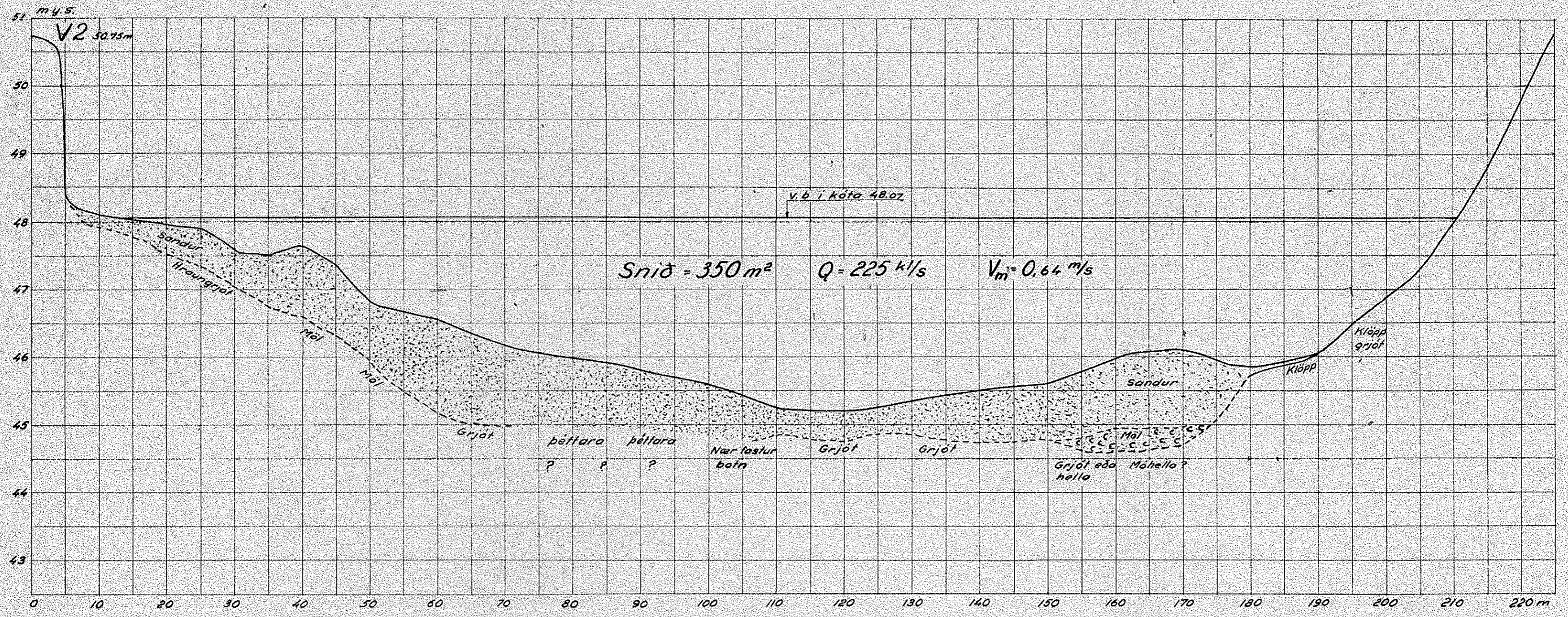
RAFORKUMÁLASTJÓRI		
Hvítá, Arhraun Arfarvegur snið V1-V18 River bed topography	1:5000	29/2'60 S. Rist/ /GA
		Vlm. 107 B.274T.226
		Fnr. 5252



RAFORKUMÁLASTJÓRI
 Hvíta, Árhraun
 Þversnið V1.

H = 1.50	19/260 SR 1/100
L = 1.500	Vhm 107
	B.274 T.208

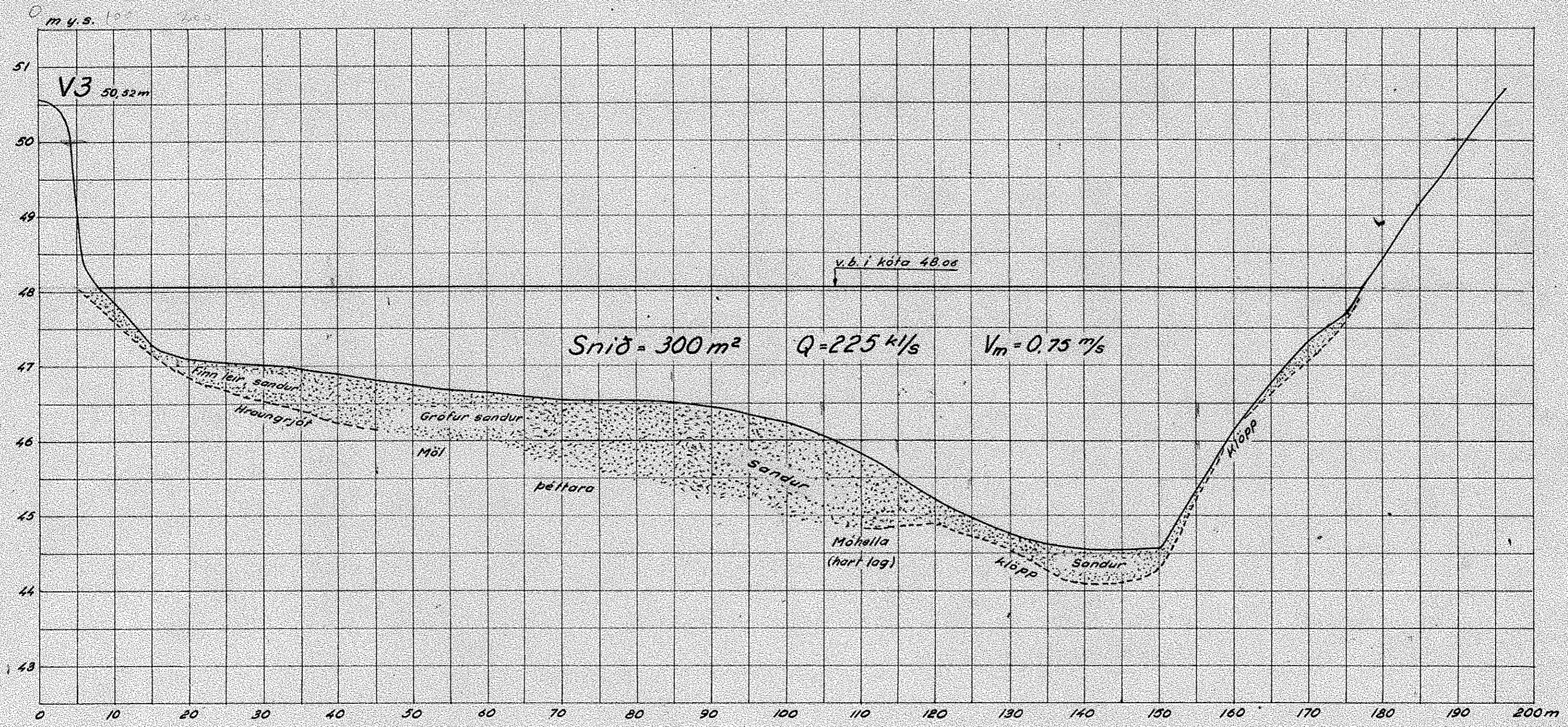
Fr. 5234



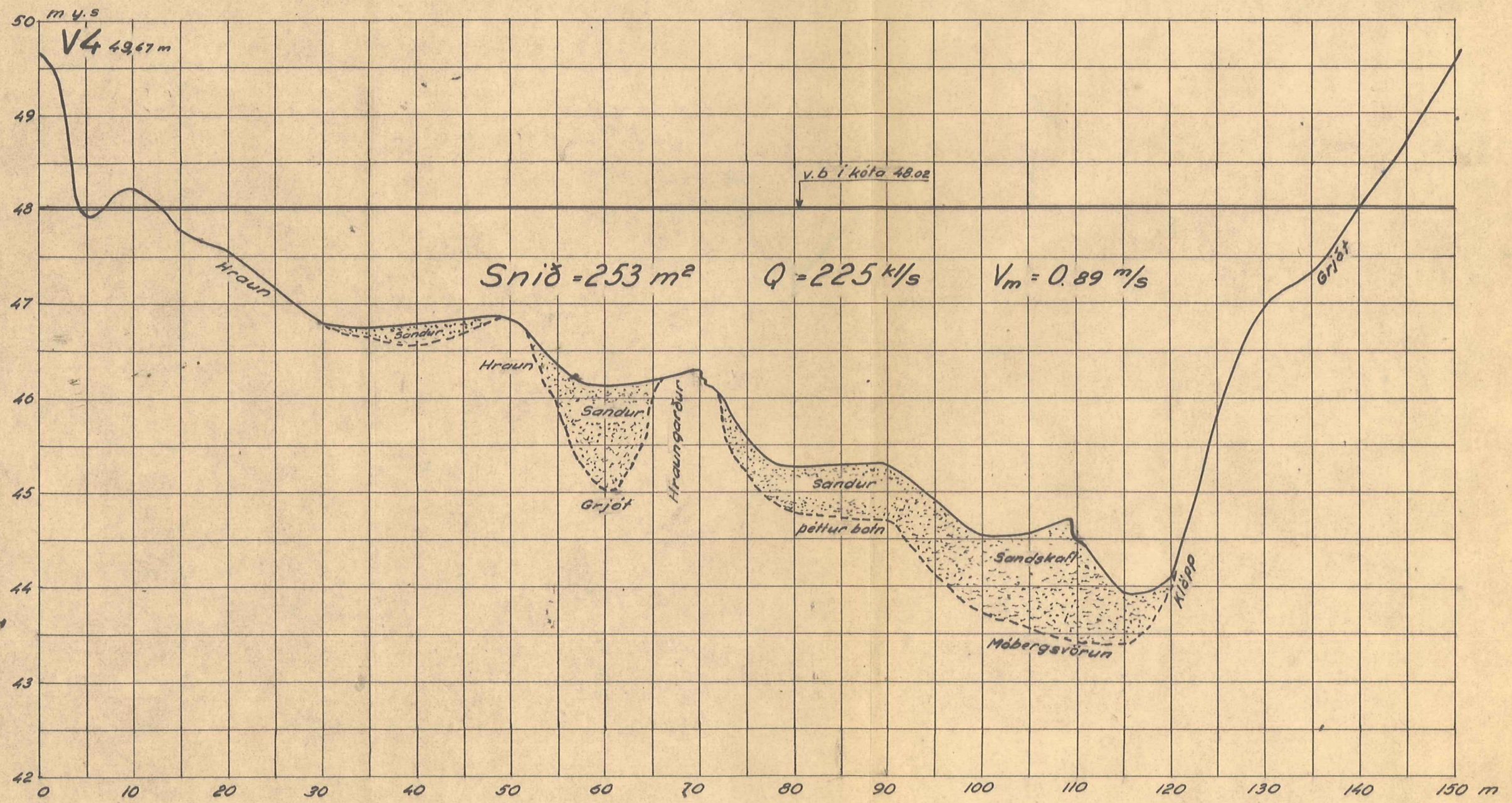
RAFORKUMALASTJÓRI
 Hvítá, Arhraun
 þversnið V2.

H = 1.50	19260 S.R. 11/10
L = 1.500	Vhm. 107
	B. 274 T. 209

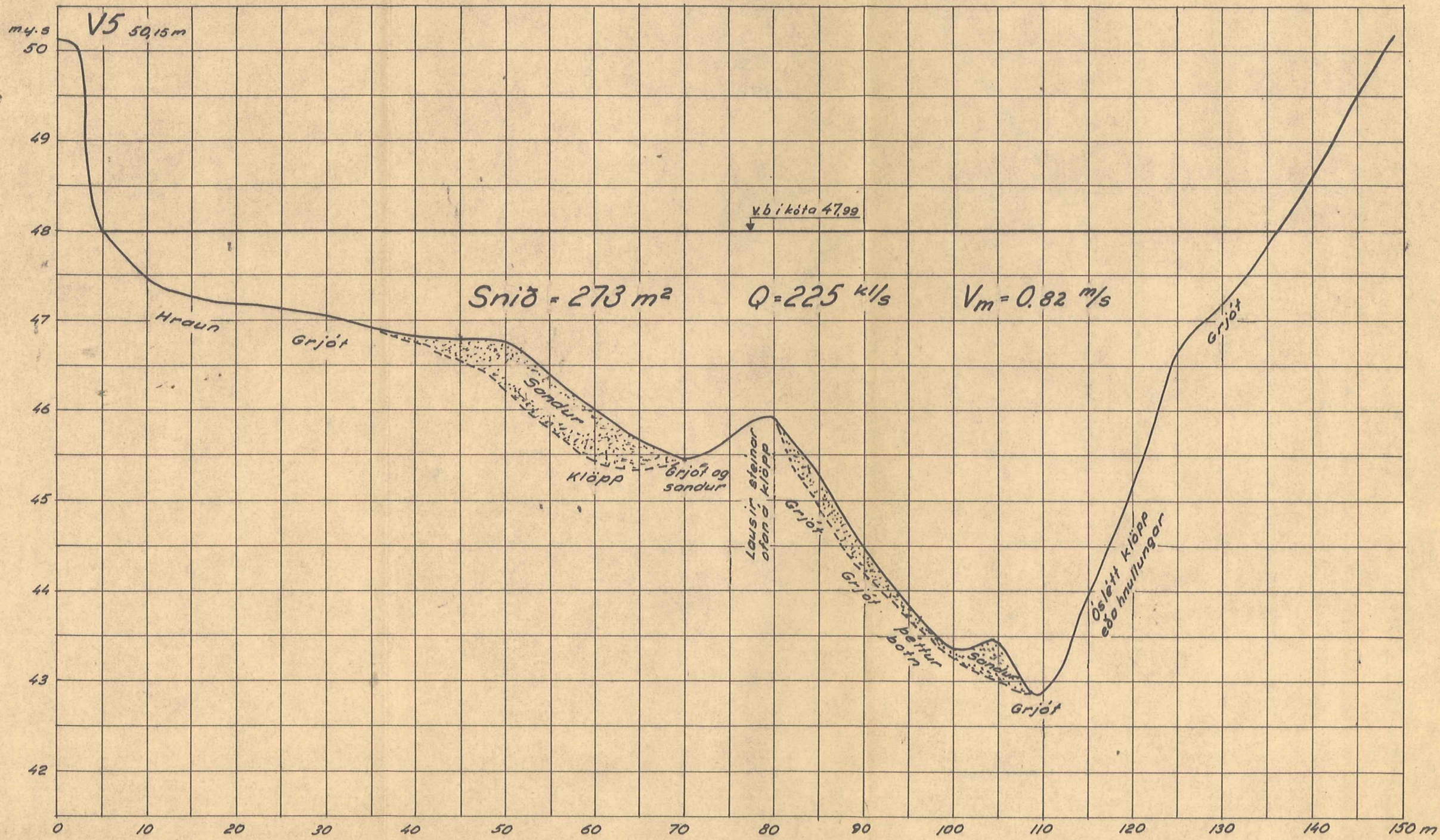
Fnr. 5235



RAFORKUMÁLASTJÓRI		
Hvítá, Arhraun	H = 1.50	19/11/60 S.R.H./J.B.
	L = 1.500	Vhm. 107 B274 T. 210
Eversnið V3		Fnr. 5236



RAFORKUMÁLASTJÓRI		
Hvítá, Arhraun Þversnið V4	H = 1:50	19/12'60 S. Rist/5B
	L = 1:500	Vhm. 107 B274T.211
Fnr. 5237		



RAFORKUMÁLASTJÓRI		
Hvítá, Arhraun Þversnið V5	H = 1:50	10/1260 S. Rist/ 138
	L = 1:500	Vhm 107 B274 T212
Fnr. 5238		

RAFORKUMALASTJÖRI

Hvítá, Árhraun

Þversnið V7

H = 1:50

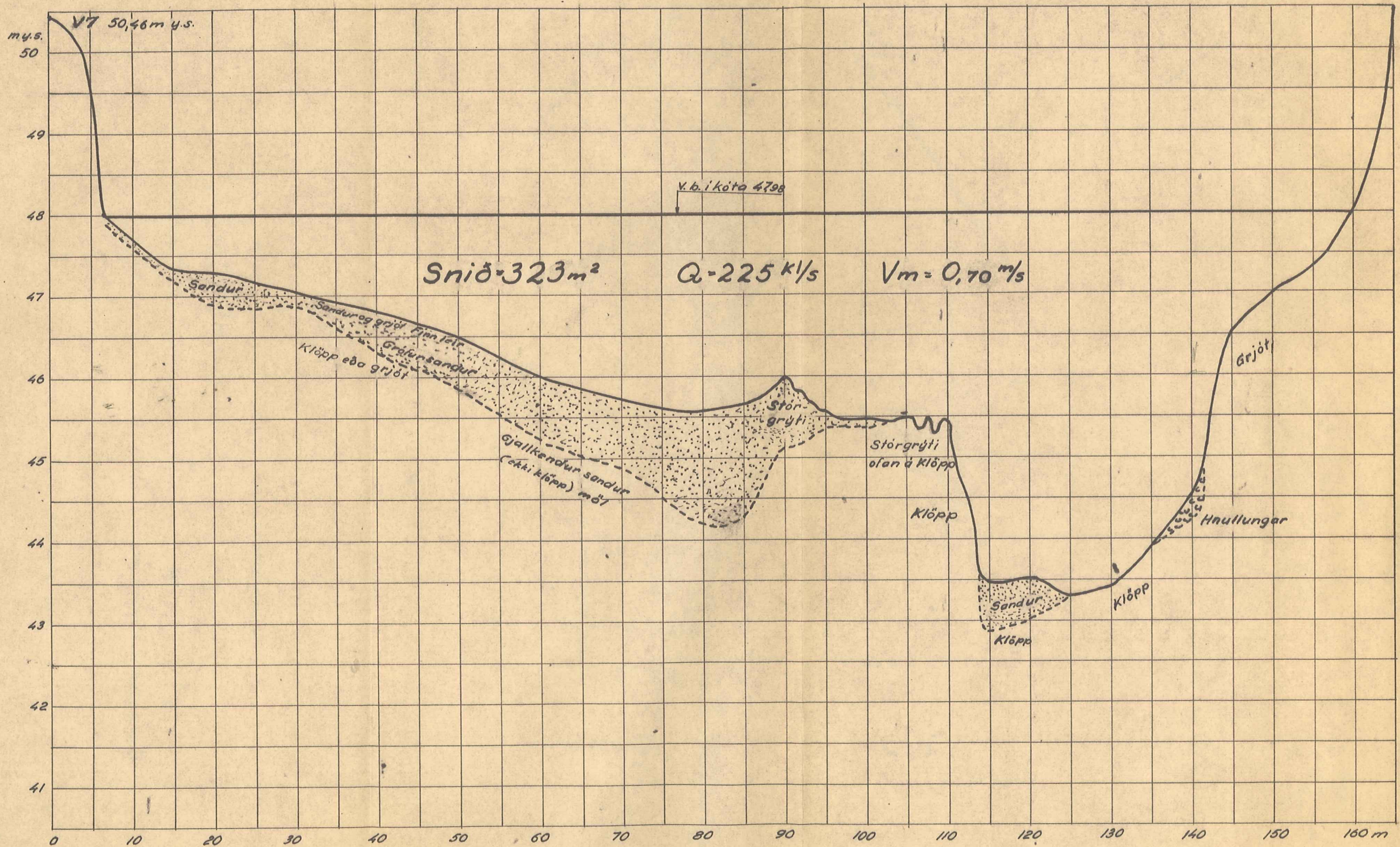
L = 1:500

19/12/60 S. Rist/JS

Vhm. 107

B274T.214

Fnr. 5240



RAFORKUMÁLASTJÖRI

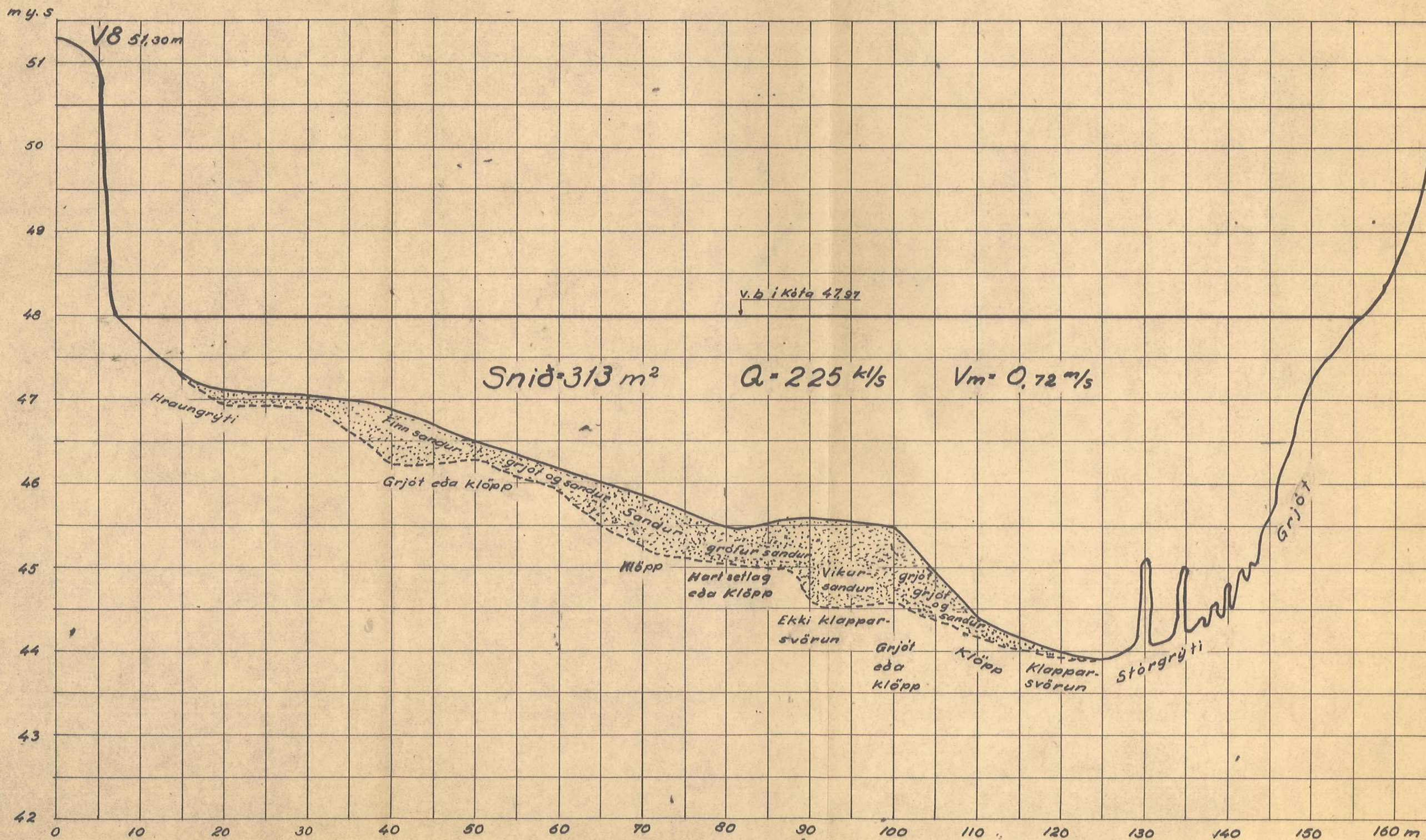
Hvítá, Árhraun

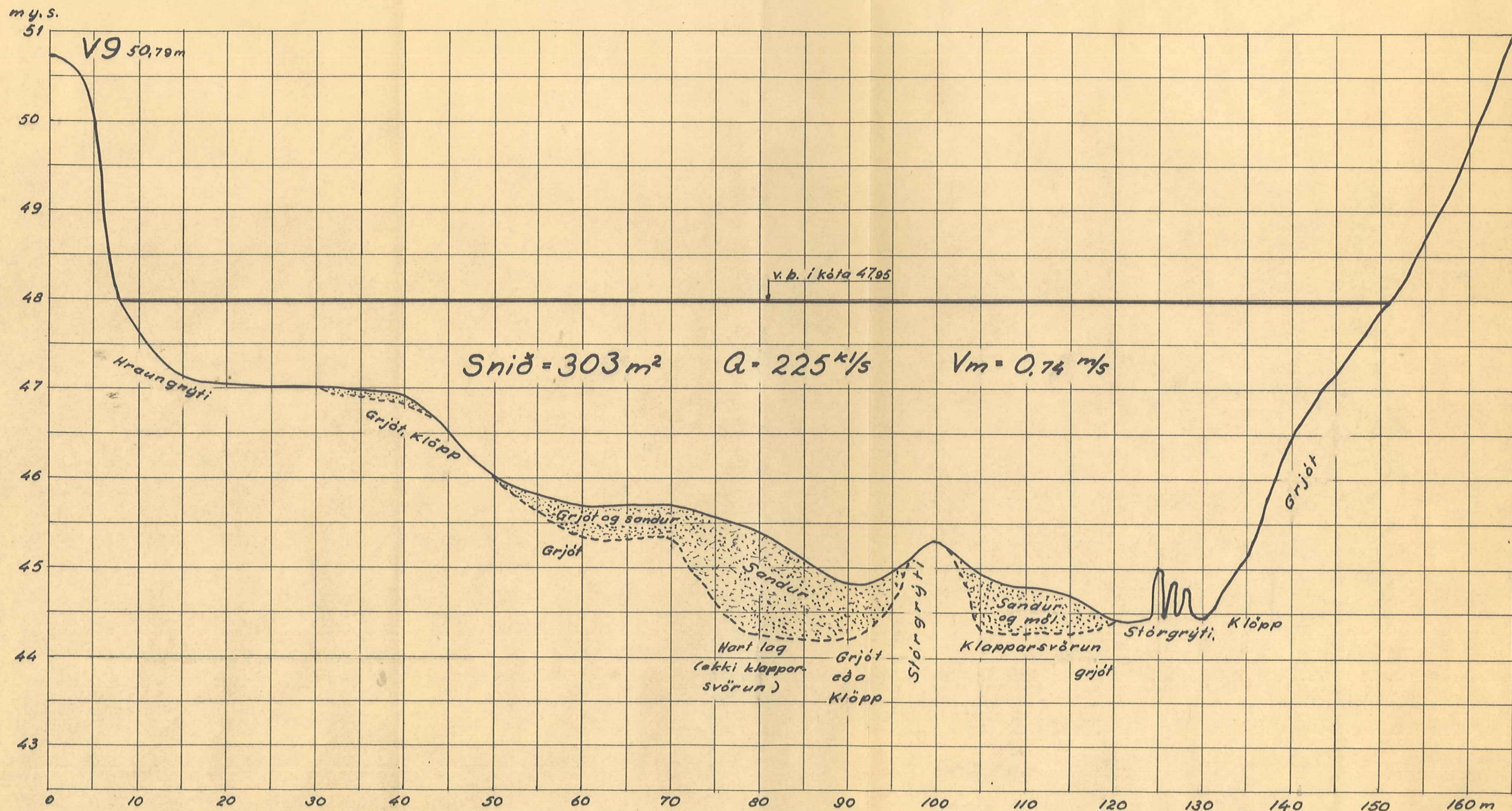
Þversnið V8

H = 1:50
L = 1:500

19/12/60 S. Rist/7/10
Vhm. 107
B. 274 T. 215

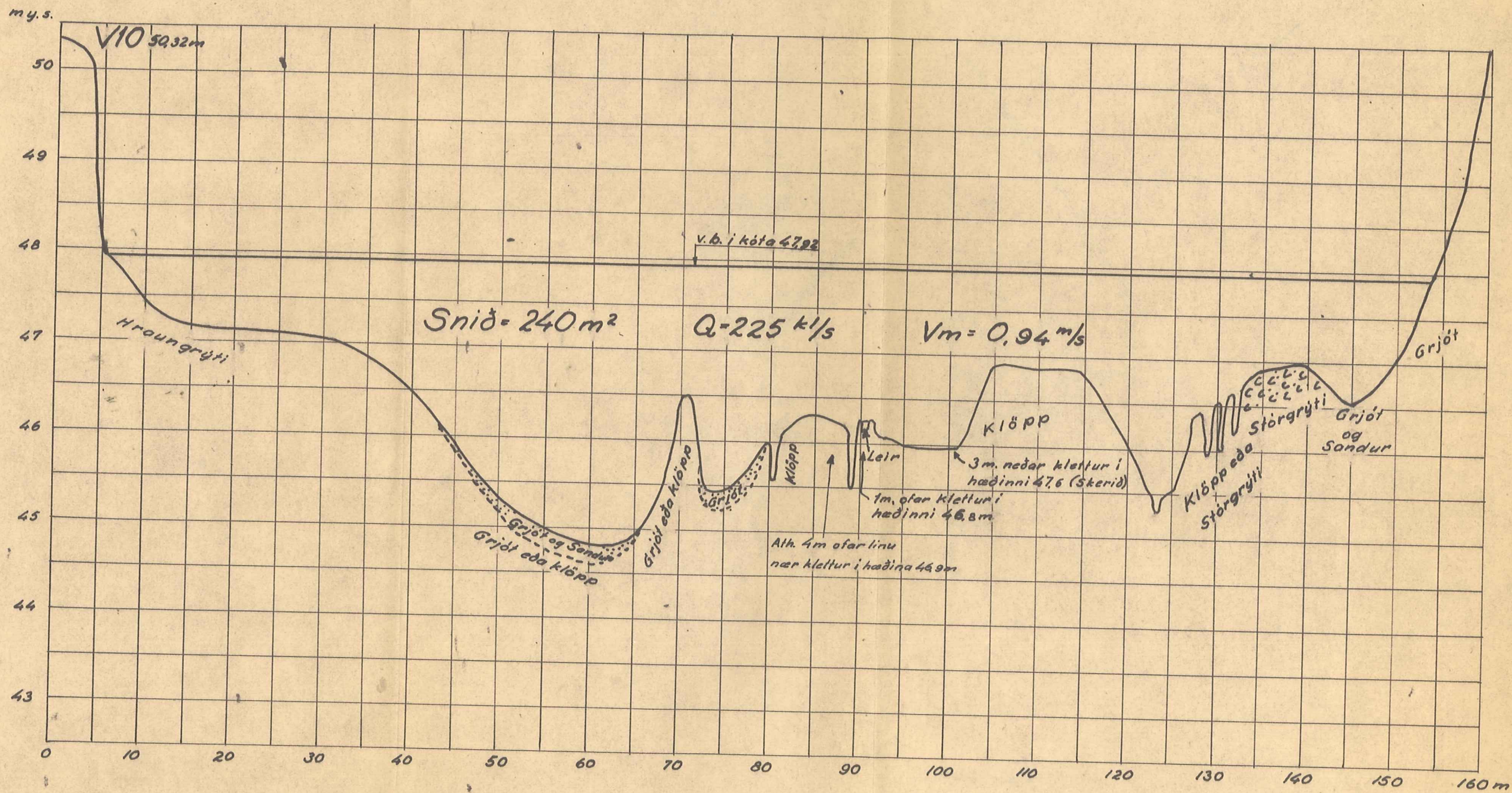
Fnr. 5241



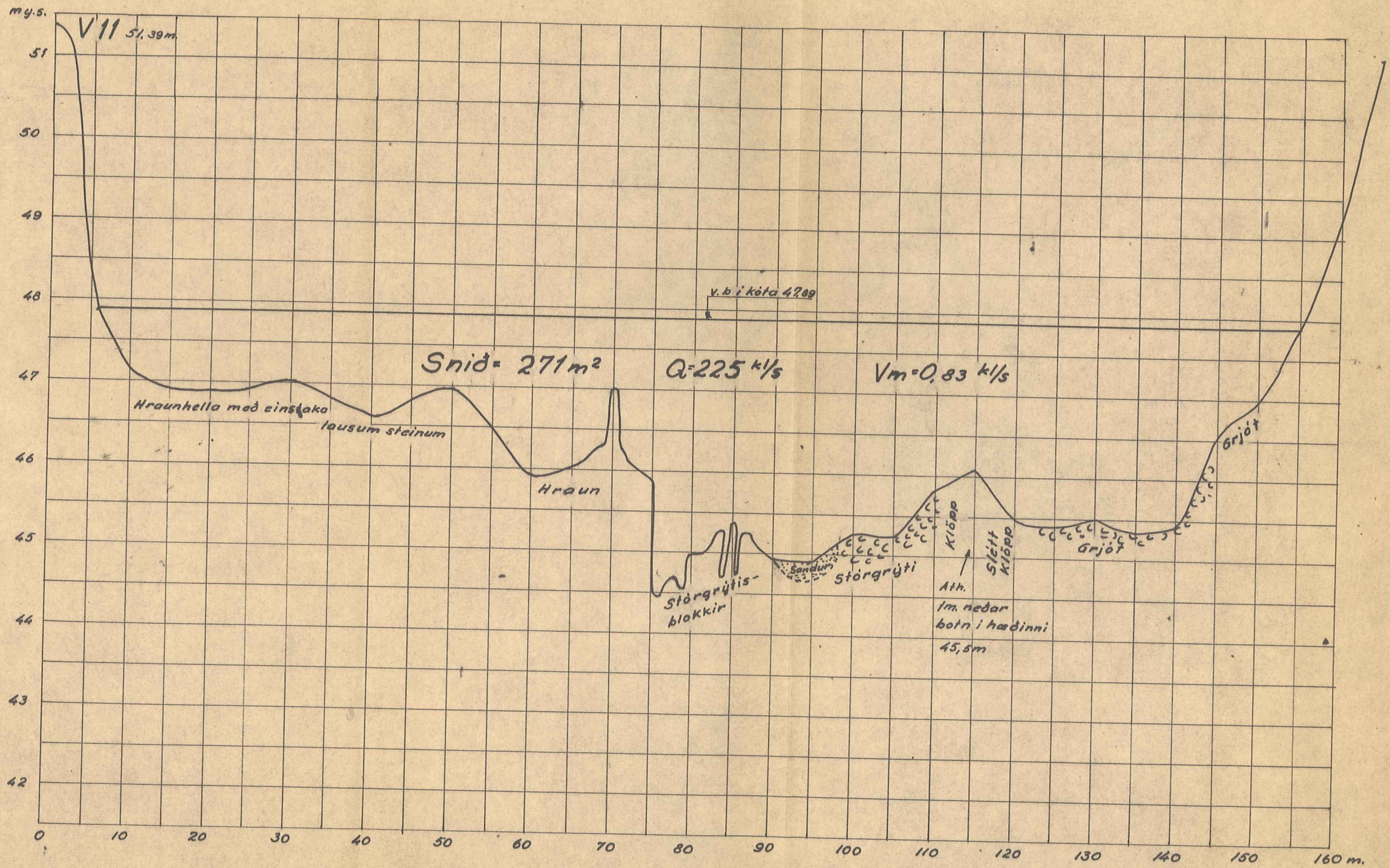


RAFORKUMALASTJÖRI

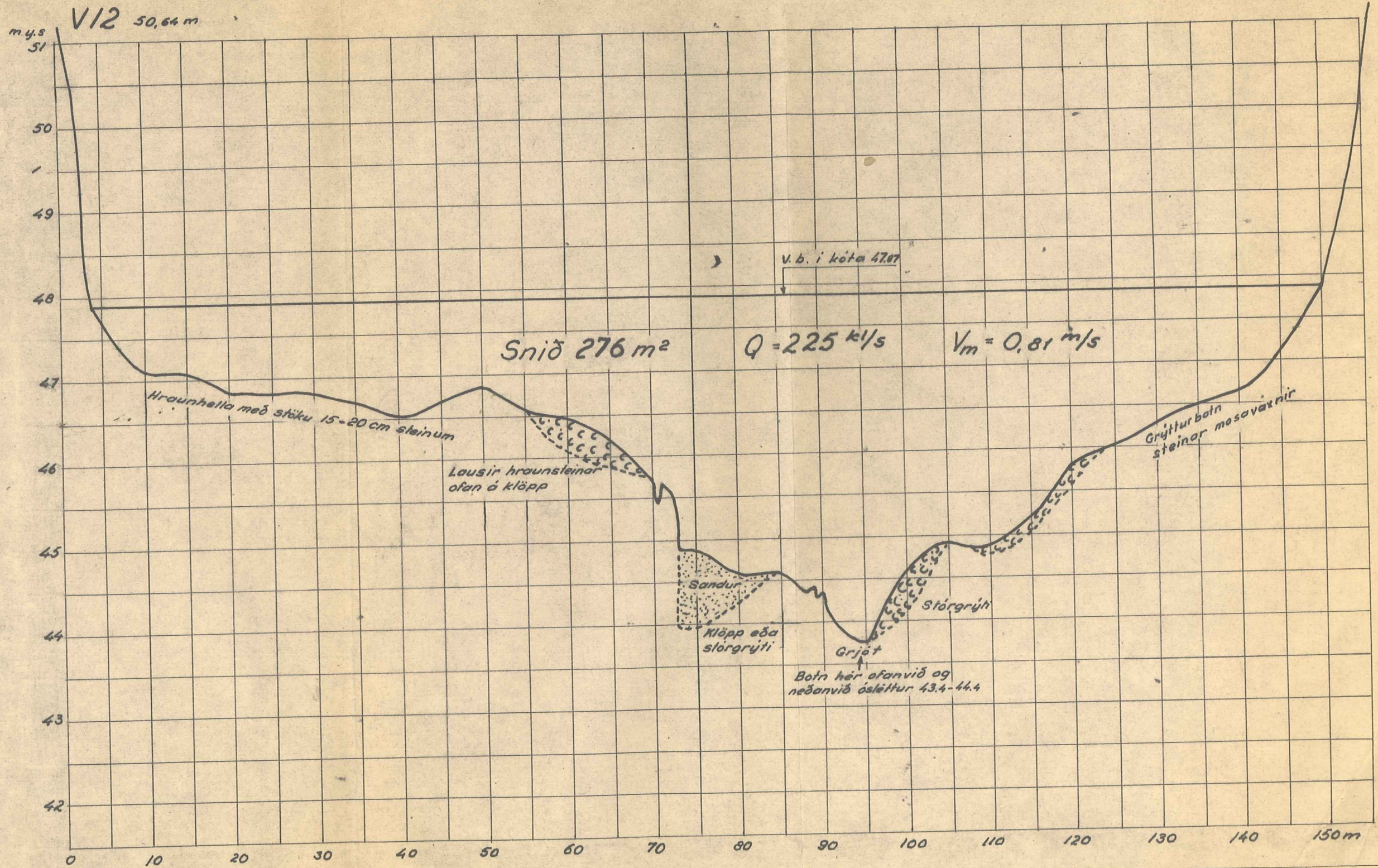
Hvítá, Arhraun Þversnið. V9	H = 1:50 L = 1:500	19/260 S. Riss/ JB Vhm. 107 B.274 T.216
Fnr. 5242		



RAFORKUMÁLASTJÓRI		
Hvítá, Arhraun Þversnið V10	H = 1:50	19/12'60 S. Rist/100
	L = 1:500	Vhm. 107 B274 T.217
Fnr. 5243		

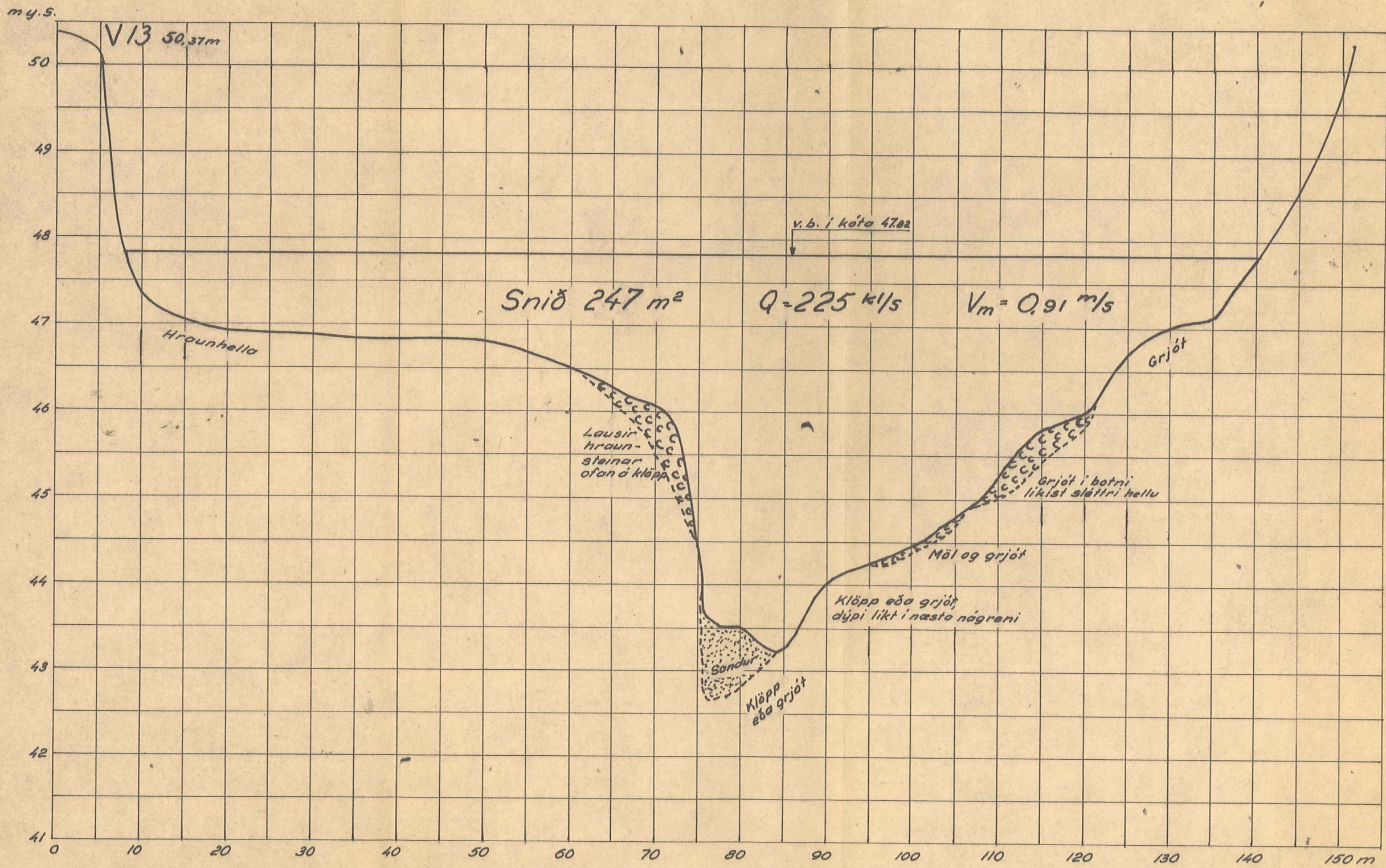


RAFORKUMALASTJÖRI		
Hvítá, Arhraun Þversnið VII	H = 1:50	19/2 '60 S.Rist/17B
	L = 1:500	Vhm. 107 B.274 T.218
Fnr. 5244		



RAFORKUMÁLASTJÓRI

Hvítá, Arhraun	H = 1:50	19/2'60 S.R.15/17
	L = 1:500	Vhm. 107 B. 274 T. 219
Þversnið V12	Fnr. 5245	



RAFORKUMÁLASTJÓRI

Hvítá, Árhraun

Þversnið V13

H=1:50

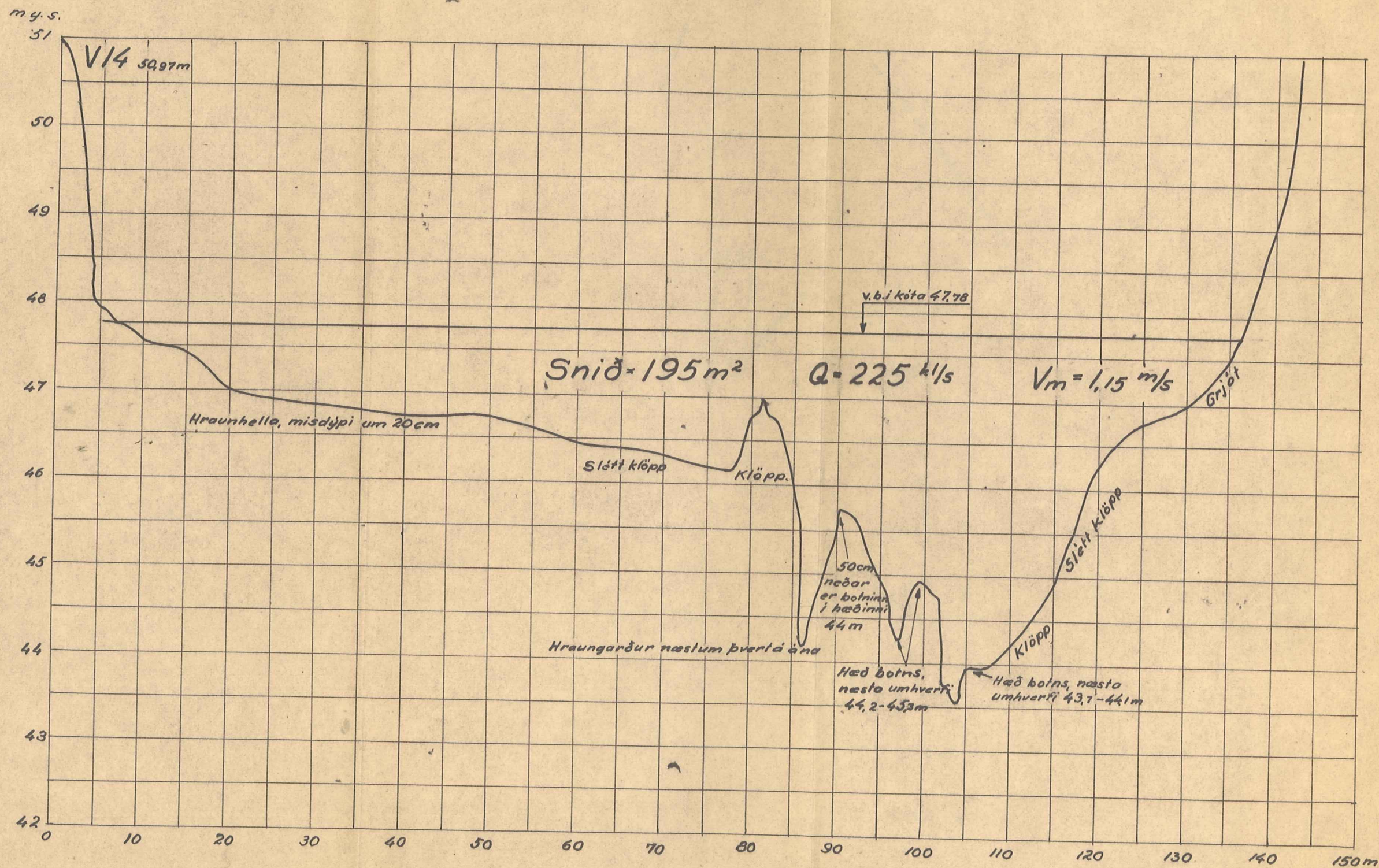
L=1:500

19/2'60 S. Rist/BB

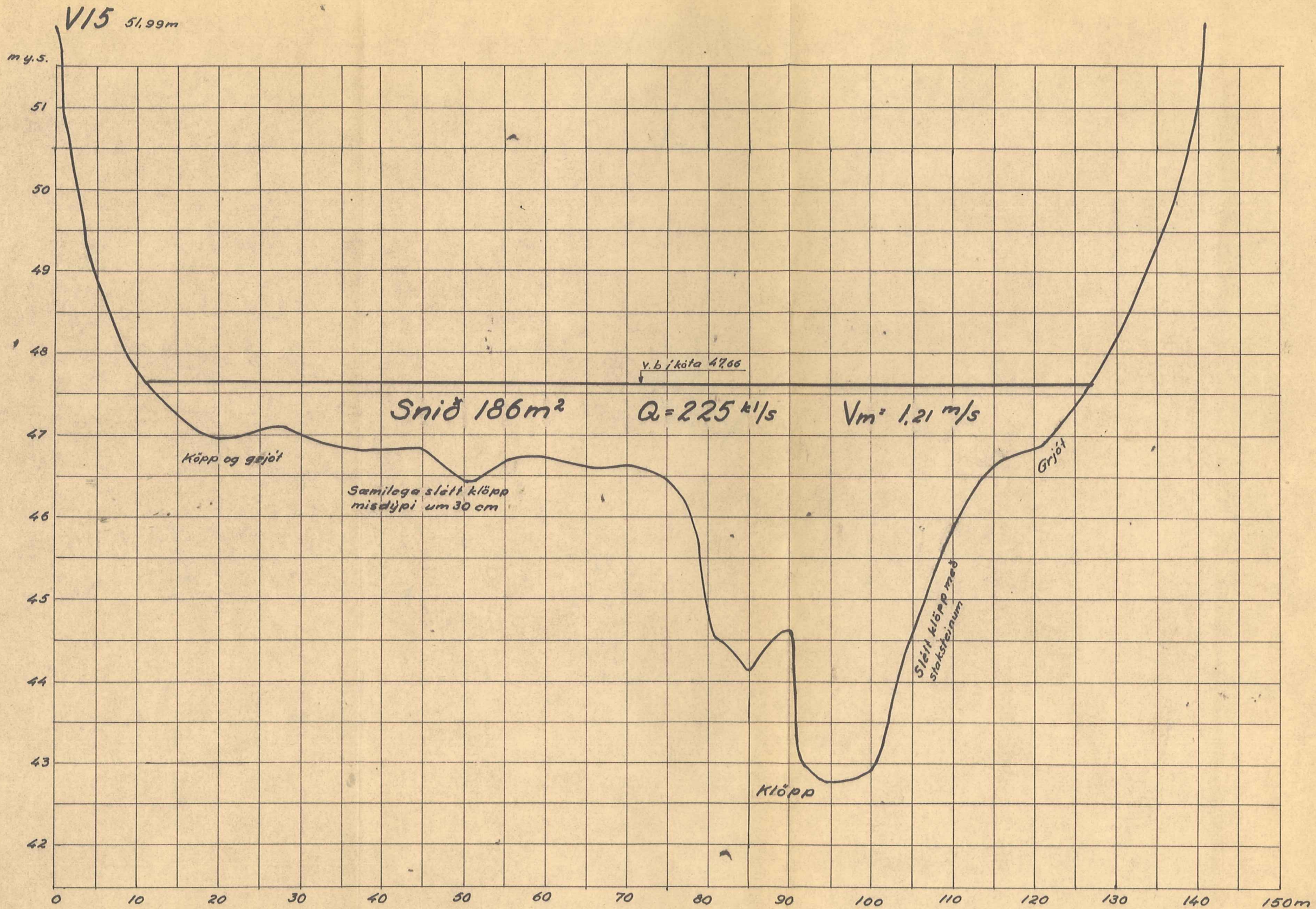
Vhm. 107

B274.T.220

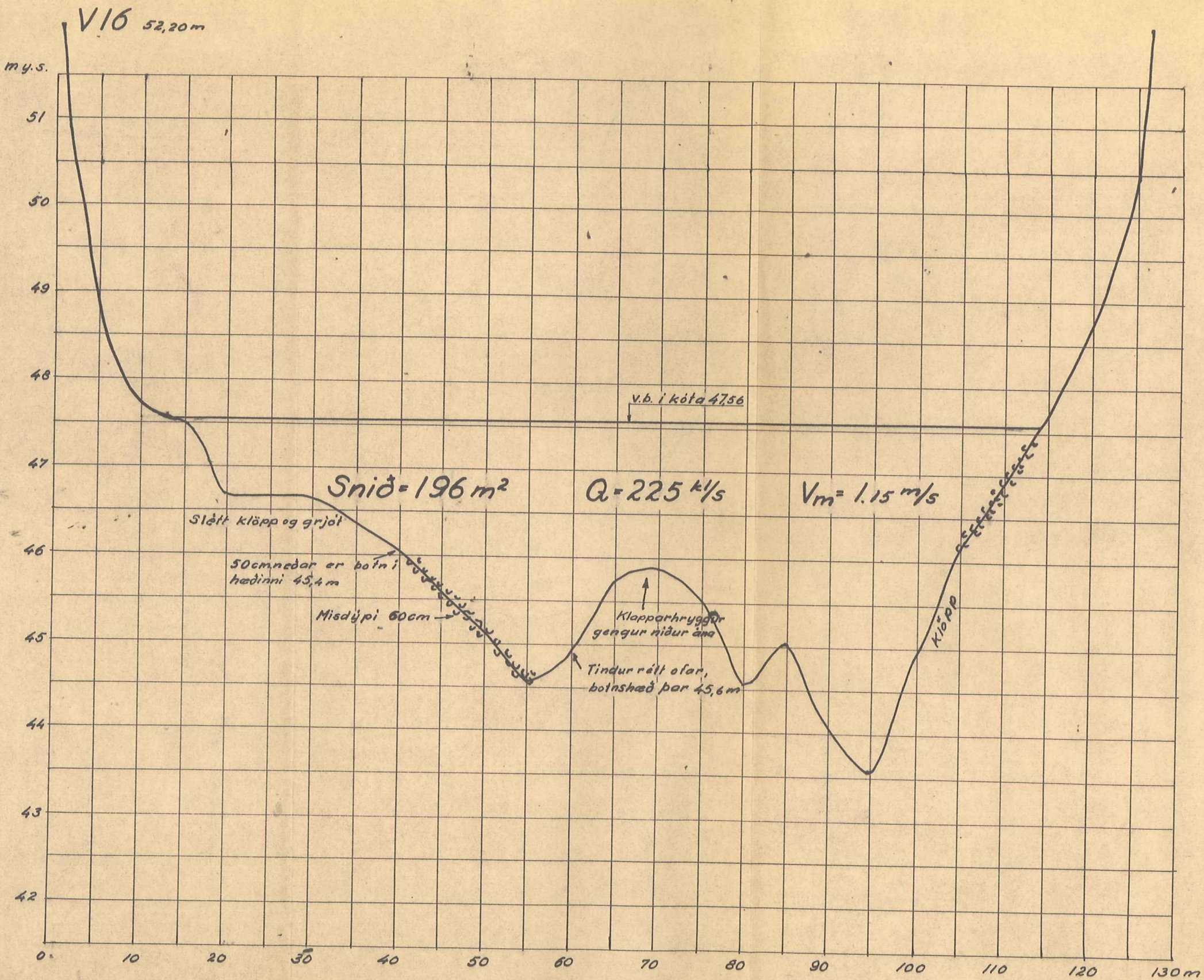
Fnr. 5246



RAFORKUMÁLASTJÓRI		
Hvítá, Árhraun	H=1:50	19/260 S. Rist/78
	H=1:500	Vhm. 107 B274 T.221
Þversnið V14	Fnr. 5247	



RAFORKUMALASTJÓRI	
Hvítá, Arhraun	H = 1:50
Þversnið V15	L = 1:500
	19/12'60 S. Rist/JSB
	Vhm. 107
	B.274 T.222
Fnr. 5248	



RAFORKUMÁLASTJÓRI

Hvítá, Arhraun

Þversnið V16

H = 1:50

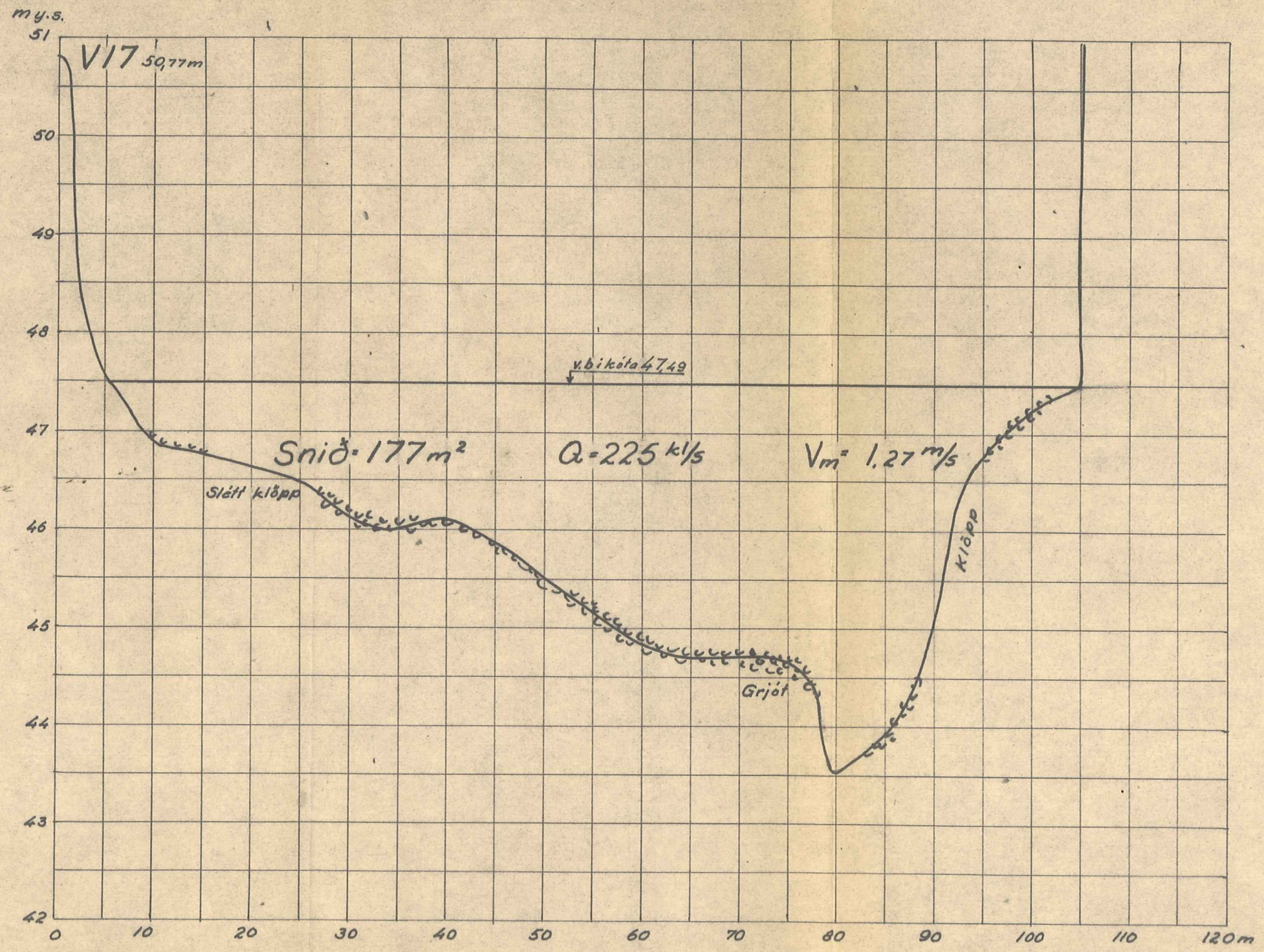
L = 1:500

19/260 S. Rist/77B

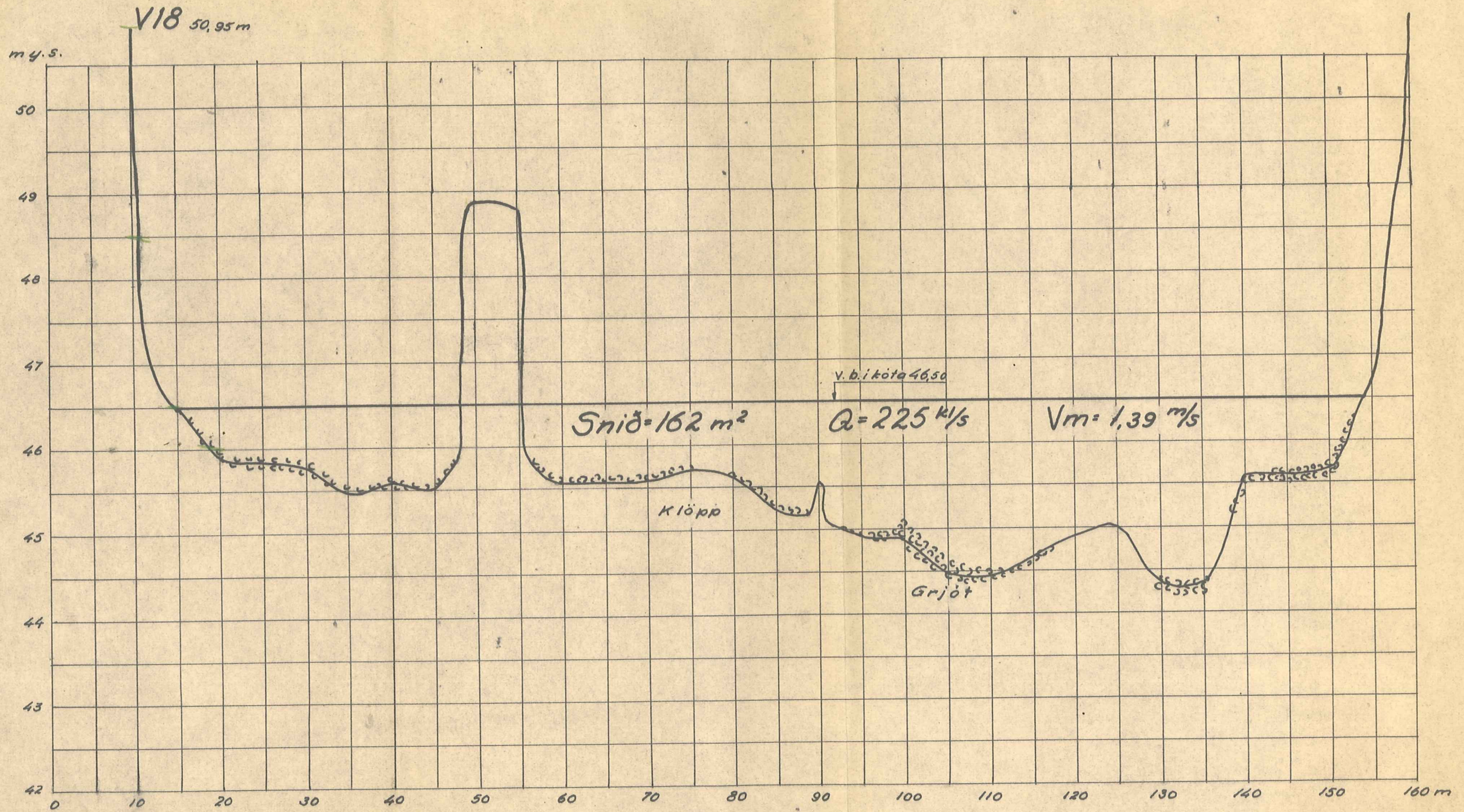
Vhm. 107

B274.T223

Fnr. 5249



RAFORKUMÁLASTJÓRI		
Hvítá, Árhraun. Þversnið V17	H = 1:50	19/2'60 S. Rist/108
	L = 1:500	Vhm. 107 B274 T.224
Fnr 5250		



RAFORKUMÁLASTJÖRI		
Hvítá, Arhraun	H = 1:50	19/12 '60 S. Rist/JB
	L = 1:500	Vhm. 107 B274 T. 225
Þversnið V18		Fnr. 5251