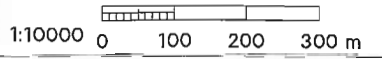
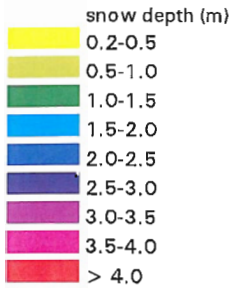
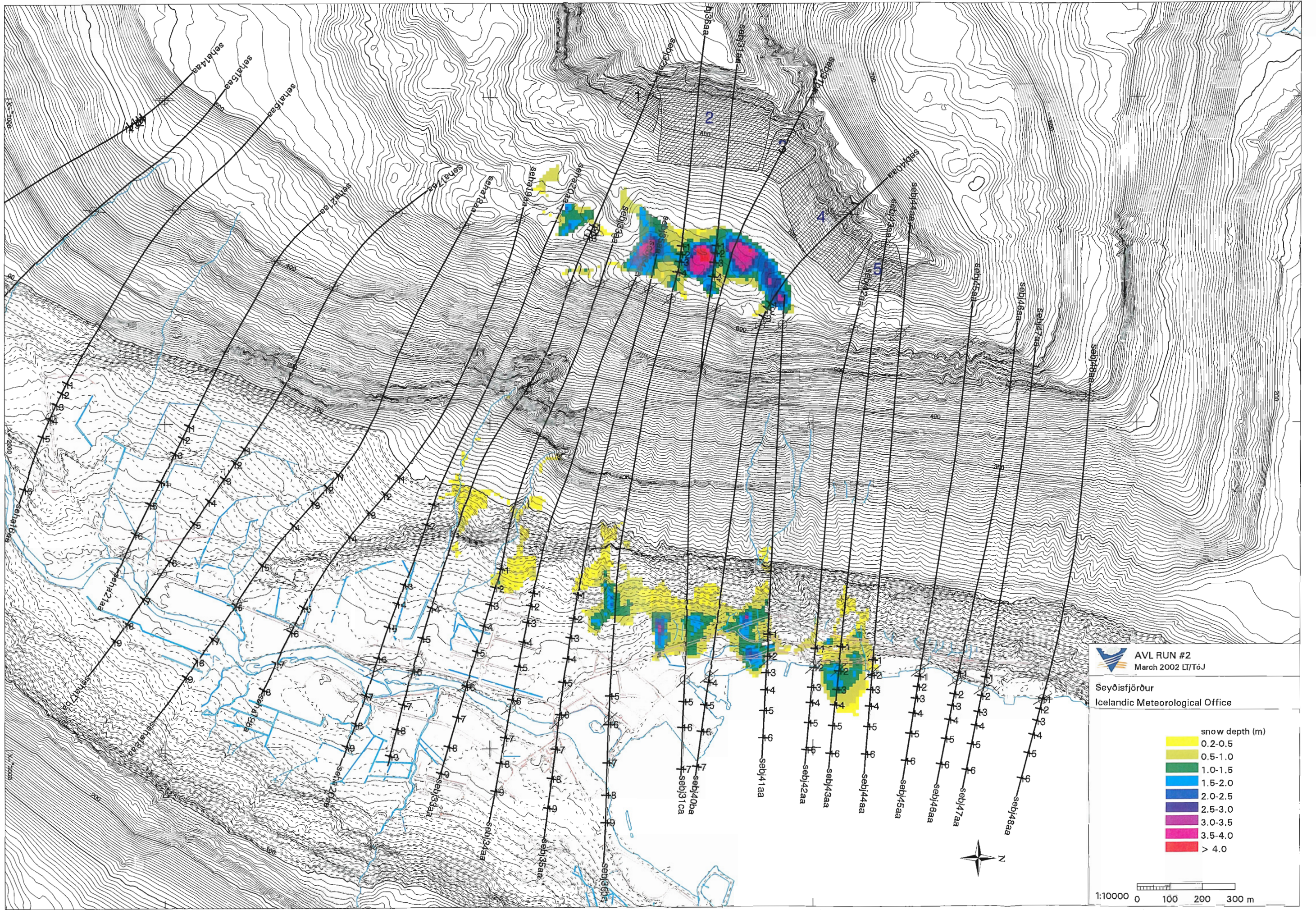

AVL RUN #1
 March 2002 LT/T6J
 Seyðisfjörður
 Icelandic Meteorological Office



X=7000
 Y=8000
 X=7500
 Y=8500
 X=8000
 Y=9000
 X=8500
 Y=9500

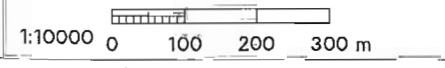


AVL RUN #2
March 2002 LT/T6J

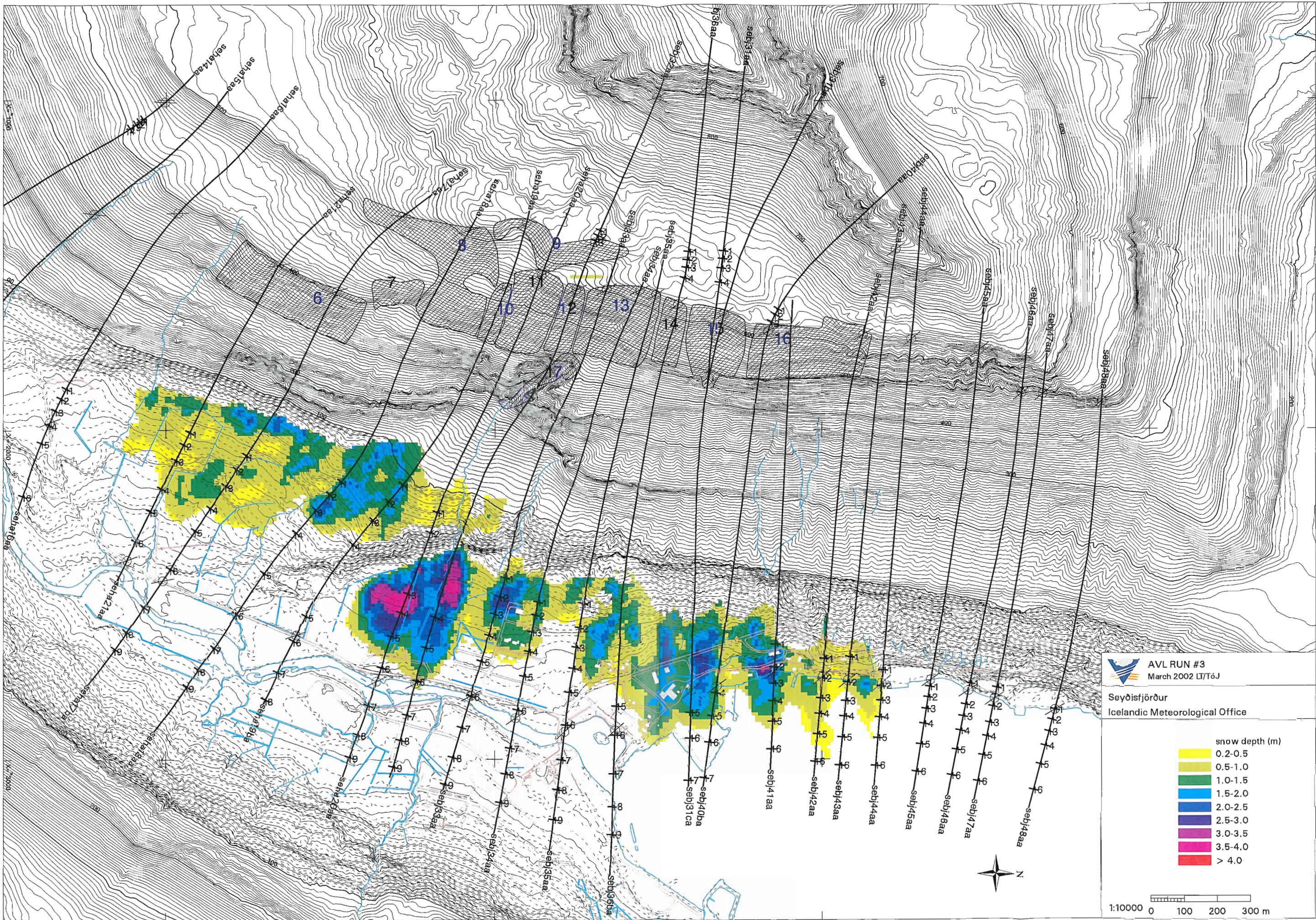
Seyðistjörður
Icelandic Meteorological Office

snow depth (m)

| | |
|-------------|---------|
| Yellow | 0.2-0.5 |
| Light Green | 0.5-1.0 |
| Green | 1.0-1.5 |
| Blue | 1.5-2.0 |
| Dark Blue | 2.0-2.5 |
| Purple | 2.5-3.0 |
| Magenta | 3.0-3.5 |
| Pink | 3.5-4.0 |
| Red | > 4.0 |



Y=7000 Y=8000 Y=9000 Y=10000



AVL RUN #3
March 2002 13/T6J

Seyðisfjörður
Icelandic Meteorological Office

| snow depth (m) | |
|----------------|-------------|
| 0.2-0.5 | Yellow |
| 0.5-1.0 | Light Green |
| 1.0-1.5 | Green |
| 1.5-2.0 | Blue |
| 2.0-2.5 | Dark Blue |
| 2.5-3.0 | Purple |
| 3.0-3.5 | Magenta |
| 3.5-4.0 | Pink |
| > 4.0 | Red |

1:10000 0 100 200 300 m

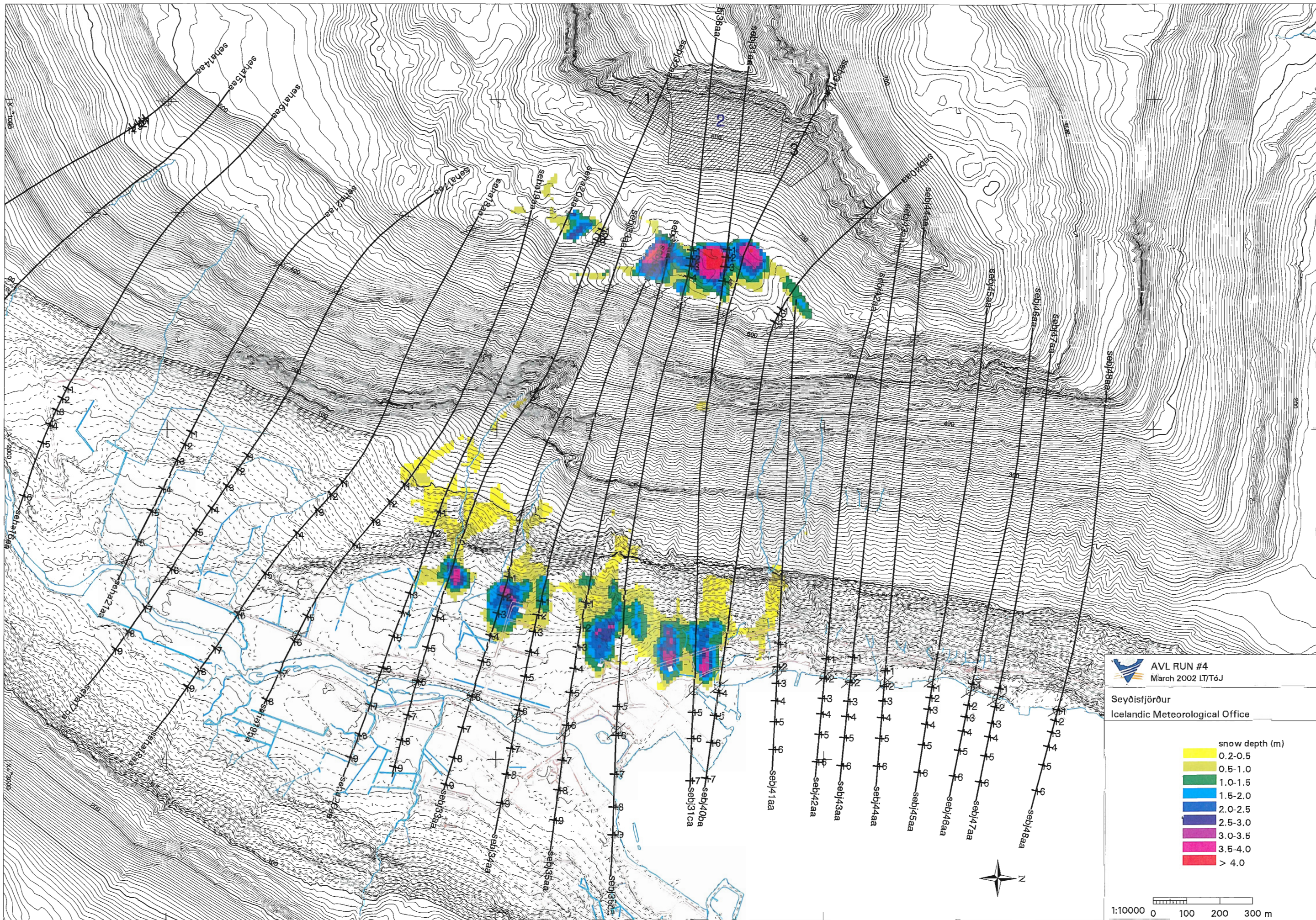


Y_m = 7000

Y_m = 8000

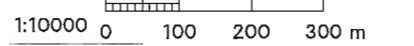
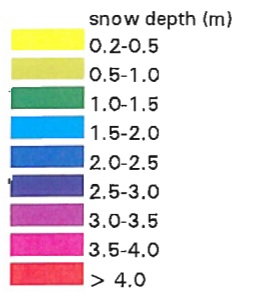
Y_m = 9000

Y_m = 10000

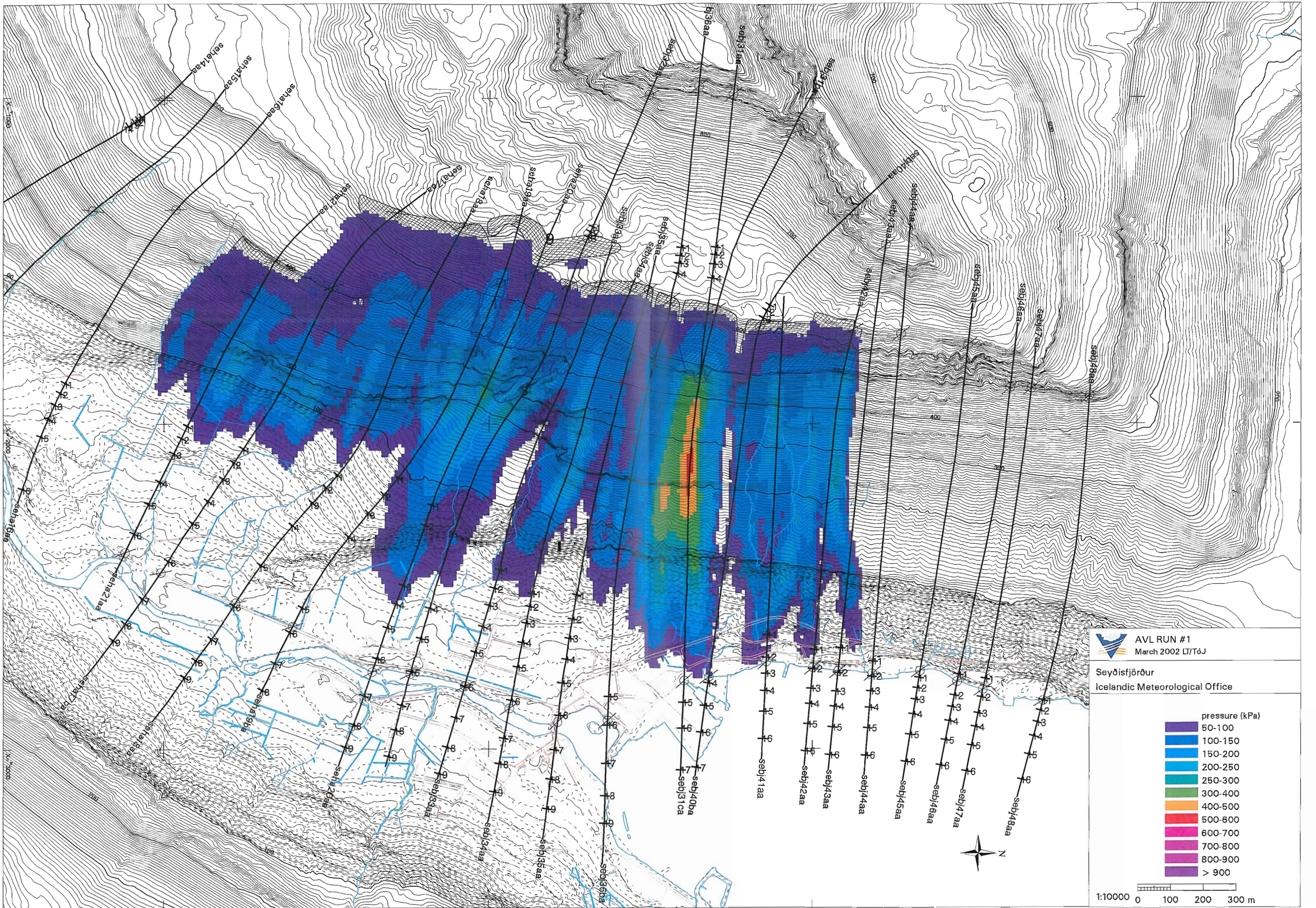


AVL RUN #4
March 2002 11/T6J

Seyðisfjörður
Icelandic Meteorological Office

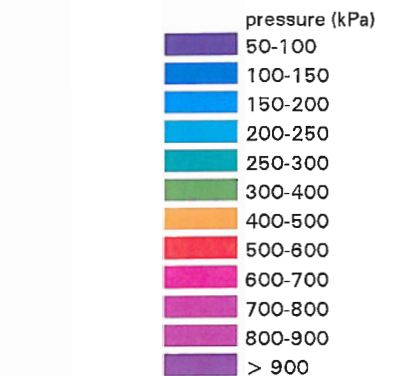


Y=" 7000
Y=" 8000
Y=" 9000
Y=" 0000



AVL RUN #1
March 2002 LT/T6J

Seyðisfjörður
Icelandic Meteorological Office



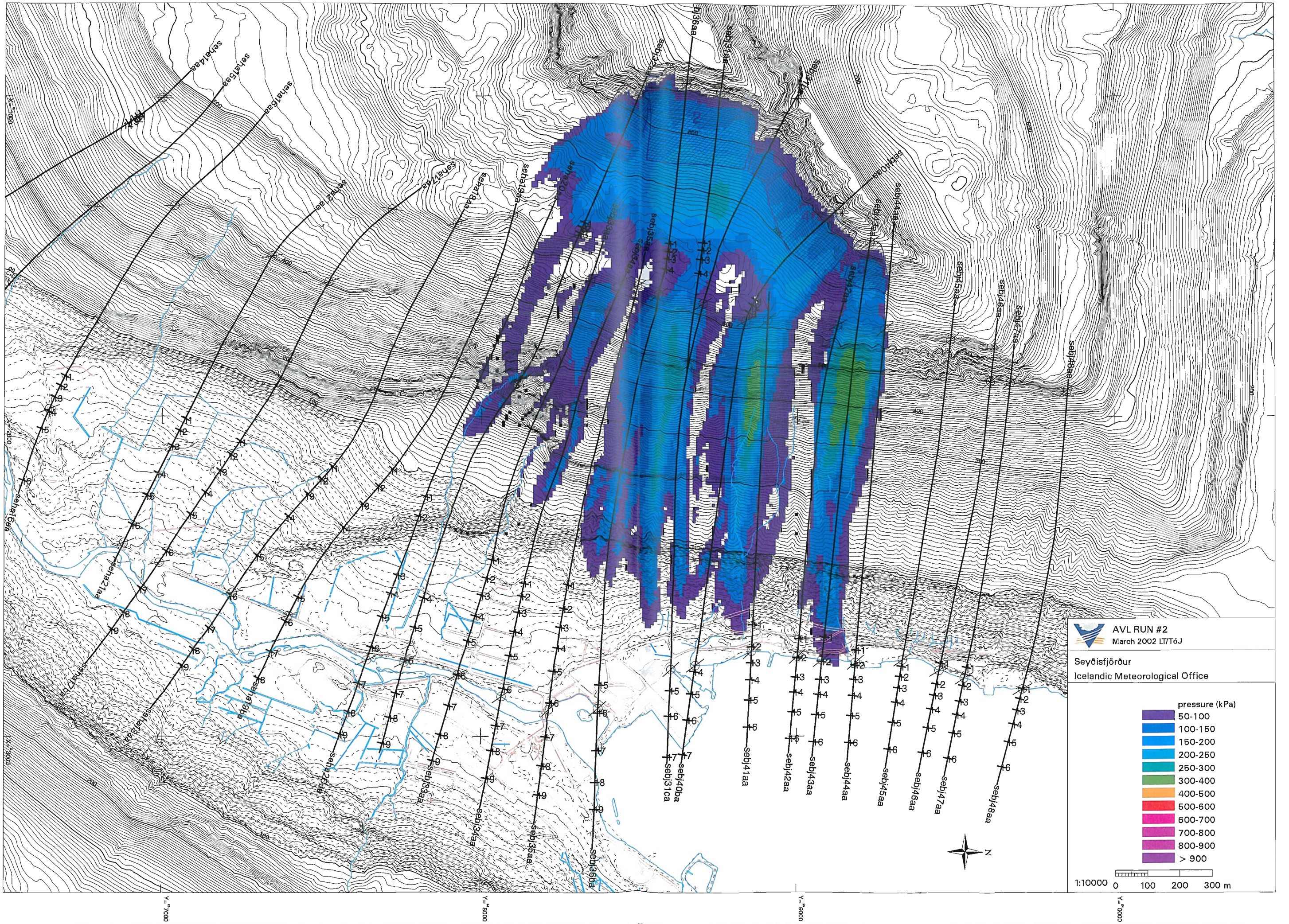
1:10000 0 100 200 300 m

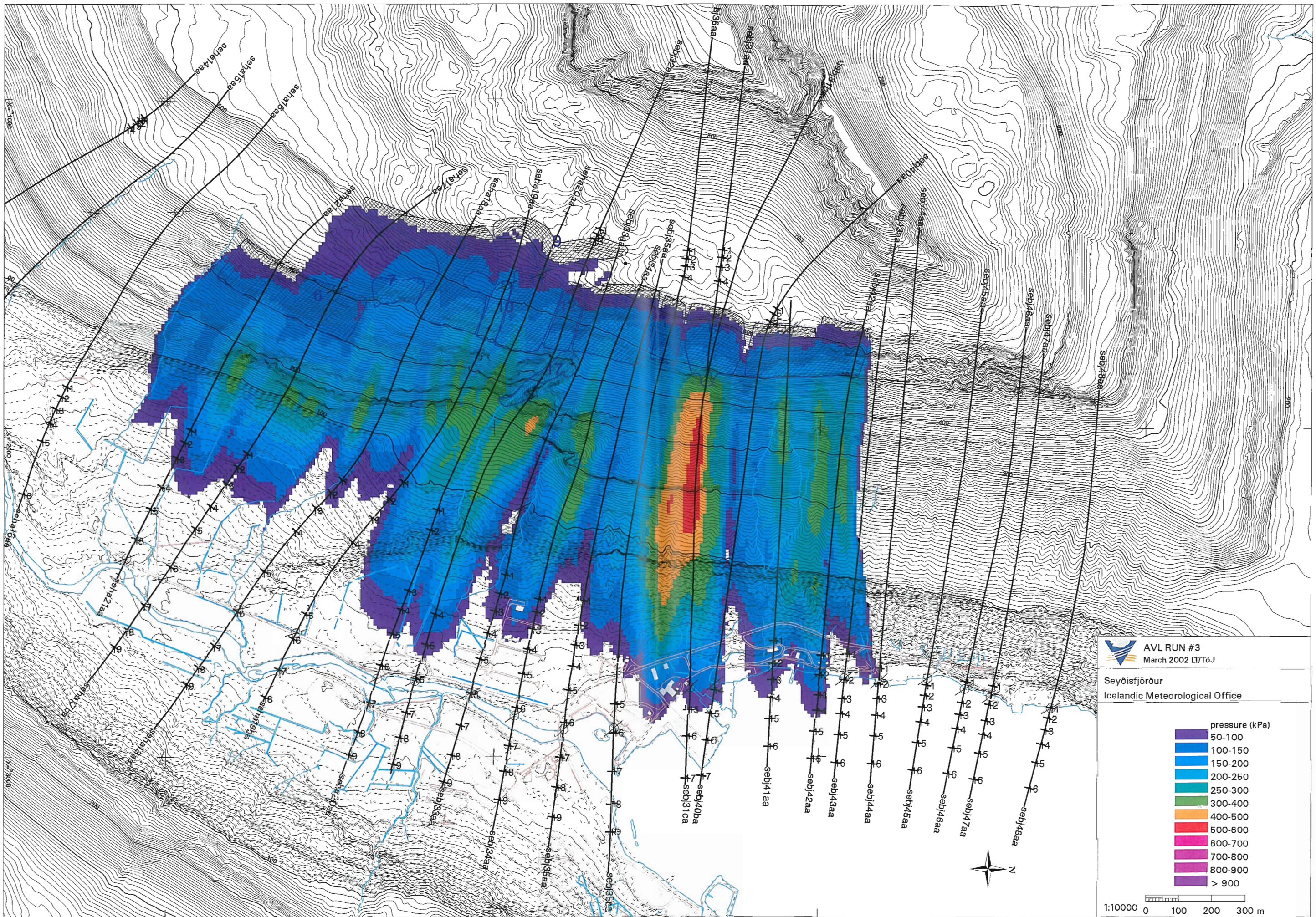
Y=7000

Y=8000

Y=9000

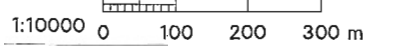
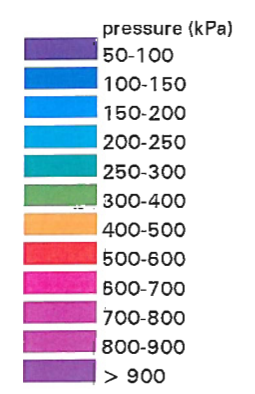
Y=10000



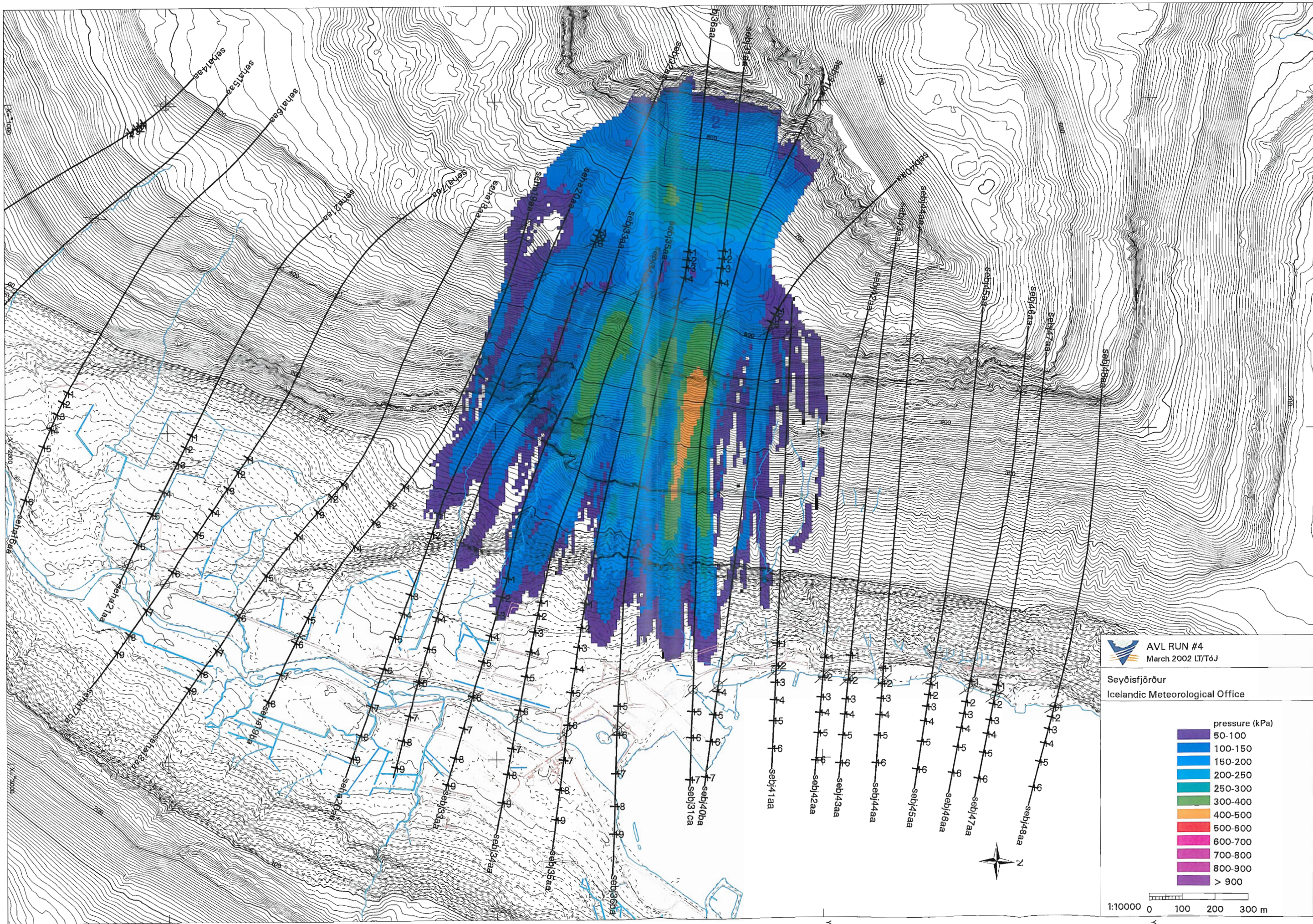


AVL RUN #3
March 2002 LT/T6J

Seyðisfjörður
Icelandic Meteorological Office



Y=7000 Y=8000 Y=9000 Y=10000



AVL RUN #4
March 2002 LT/T6J

Seyðisfjörður
Icelandic Meteorological Office



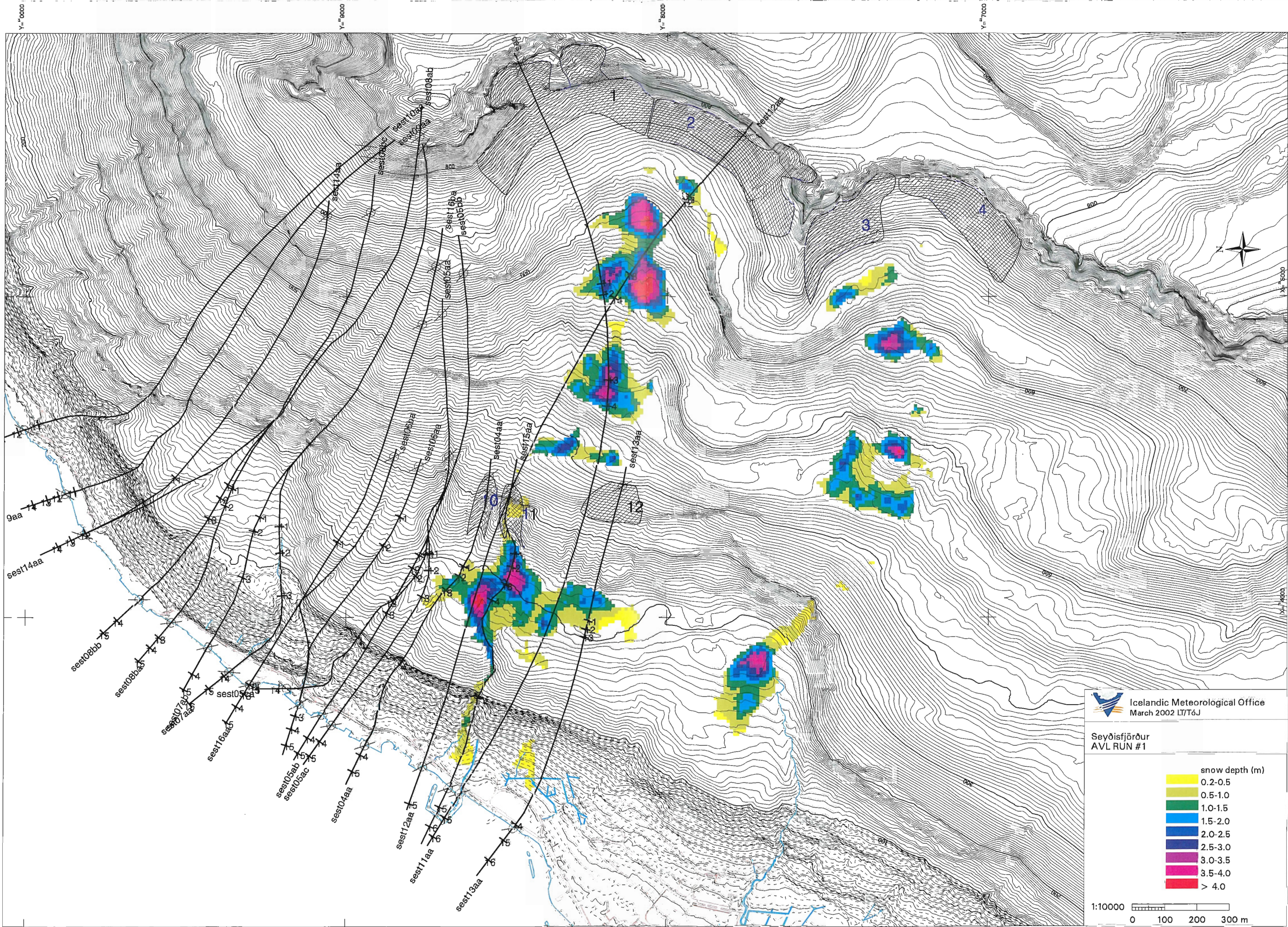
1:10000 0 100 200 300 m

Y=7000

Y=8000

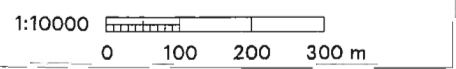
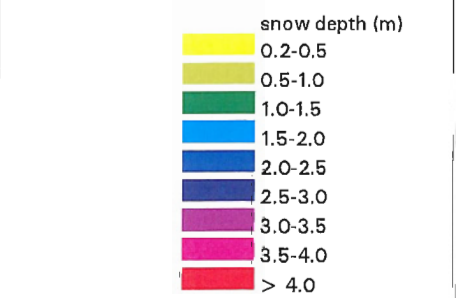
Y=9000

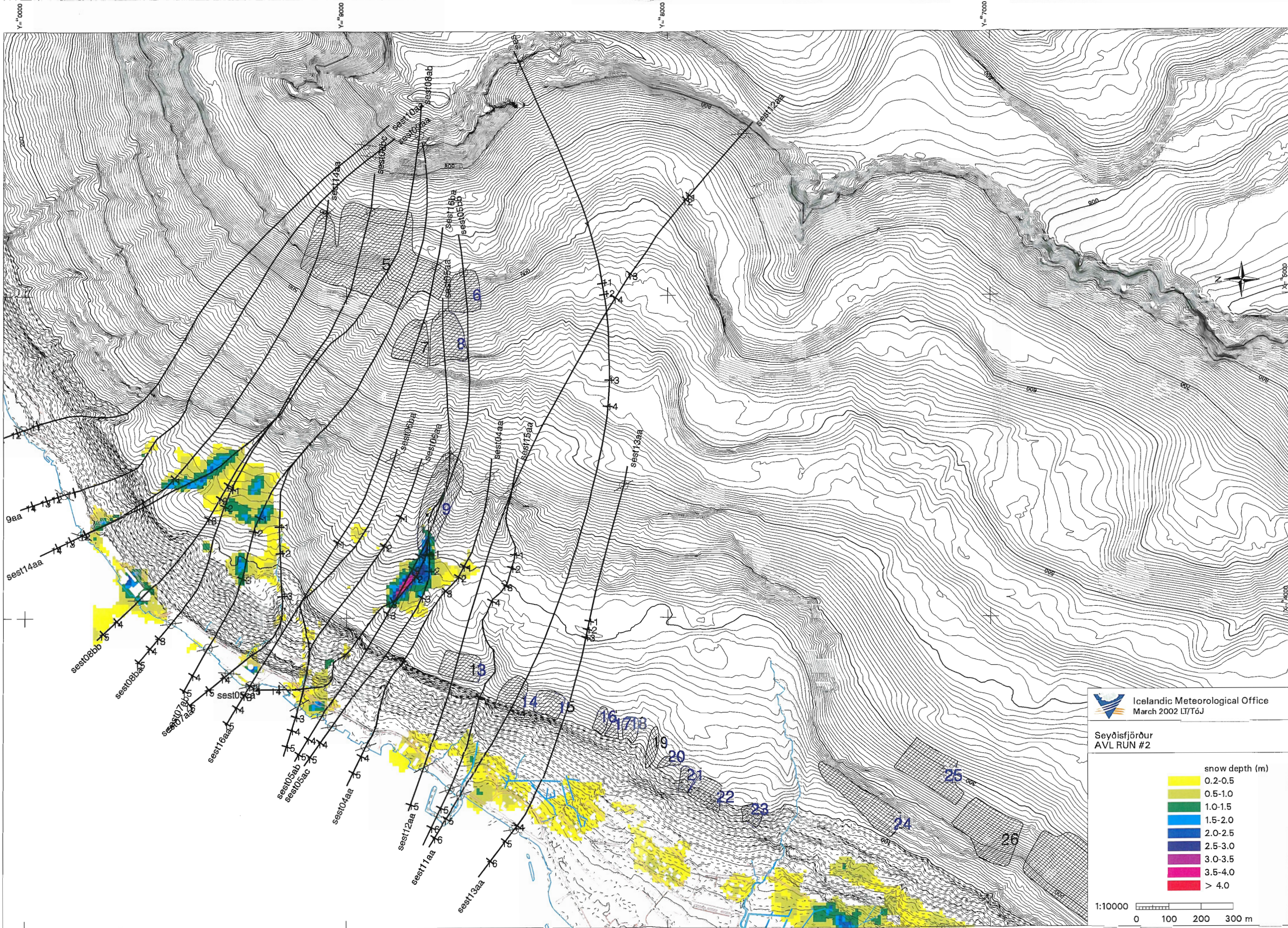
Y=10000



Icelandic Meteorological Office
 March 2002 LT/T6J

Seyðisfjörður
 AVL RUN #1



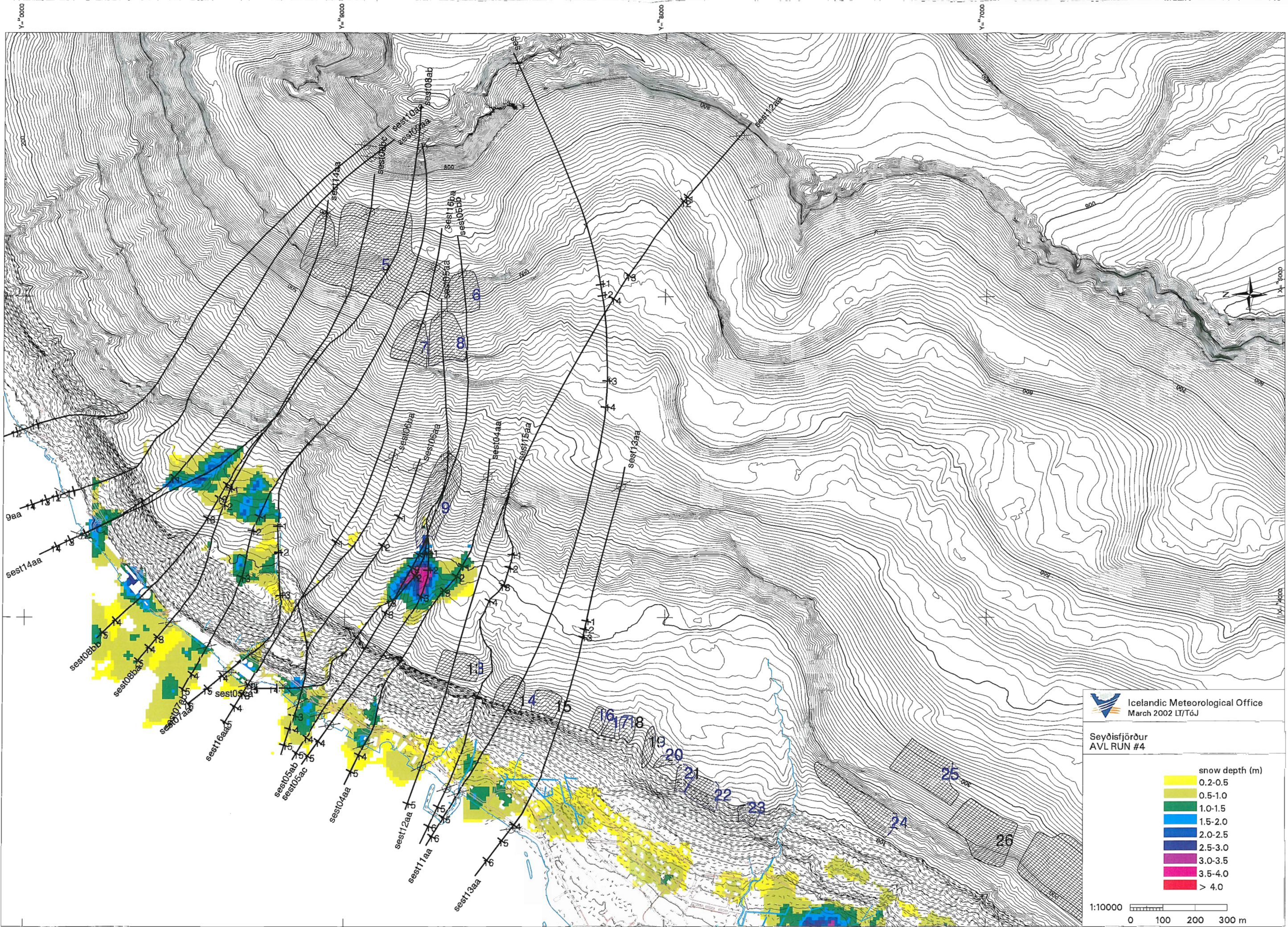


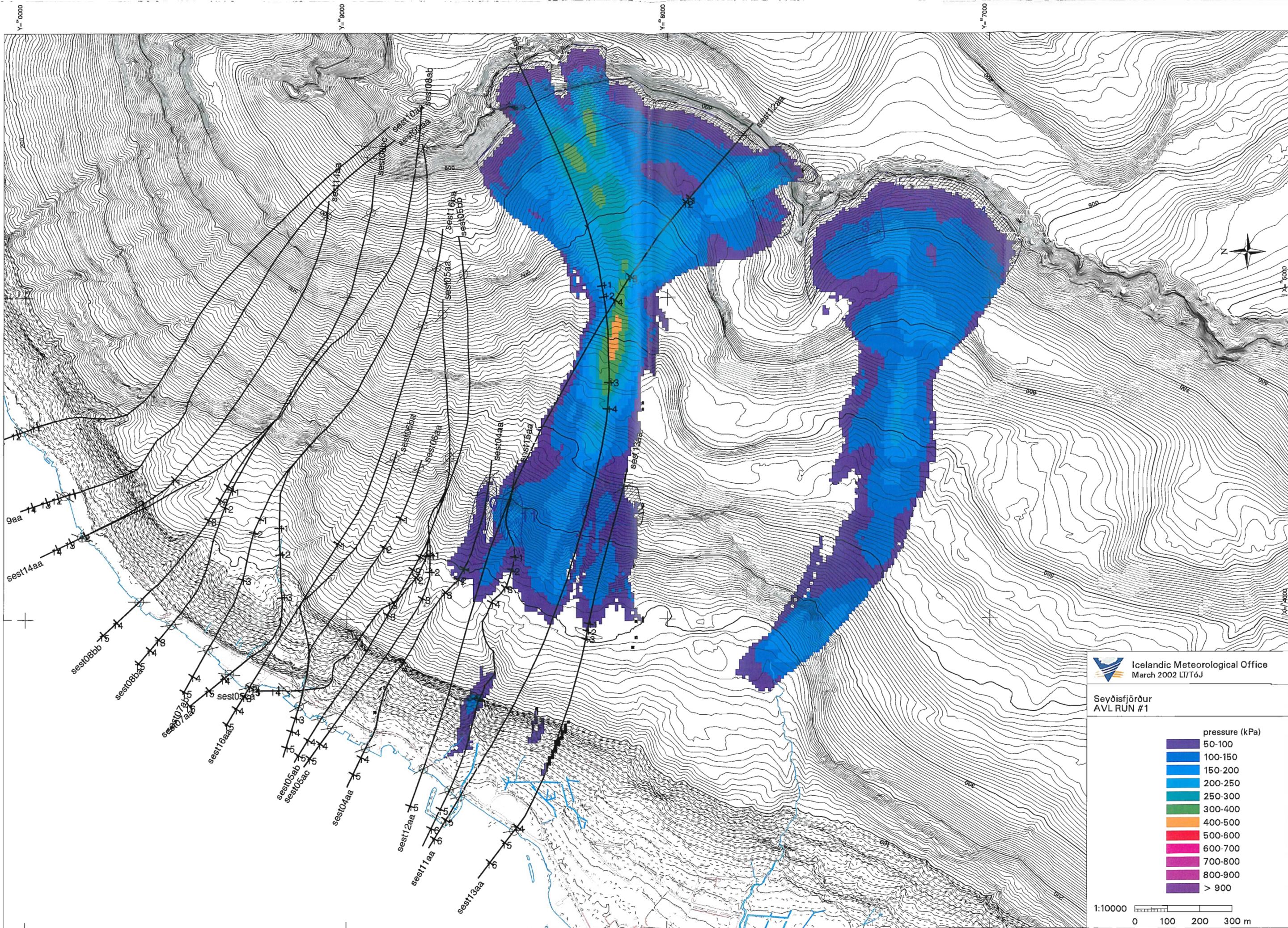
Icelandic Meteorological Office
 March 2002 LI/TóJ

Seyðisfjörður
 AVL RUN #2

| snow depth (m) | |
|----------------|---------|
| Yellow | 0.2-0.5 |
| Light Green | 0.5-1.0 |
| Green | 1.0-1.5 |
| Blue | 1.5-2.0 |
| Dark Blue | 2.0-2.5 |
| Purple | 2.5-3.0 |
| Magenta | 3.0-3.5 |
| Red | 3.5-4.0 |
| Dark Red | > 4.0 |

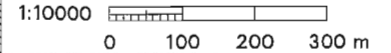
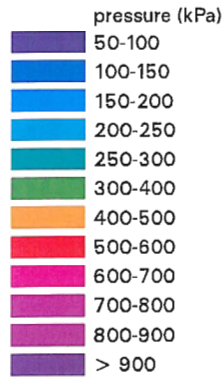
1:10000
 0 100 200 300 m

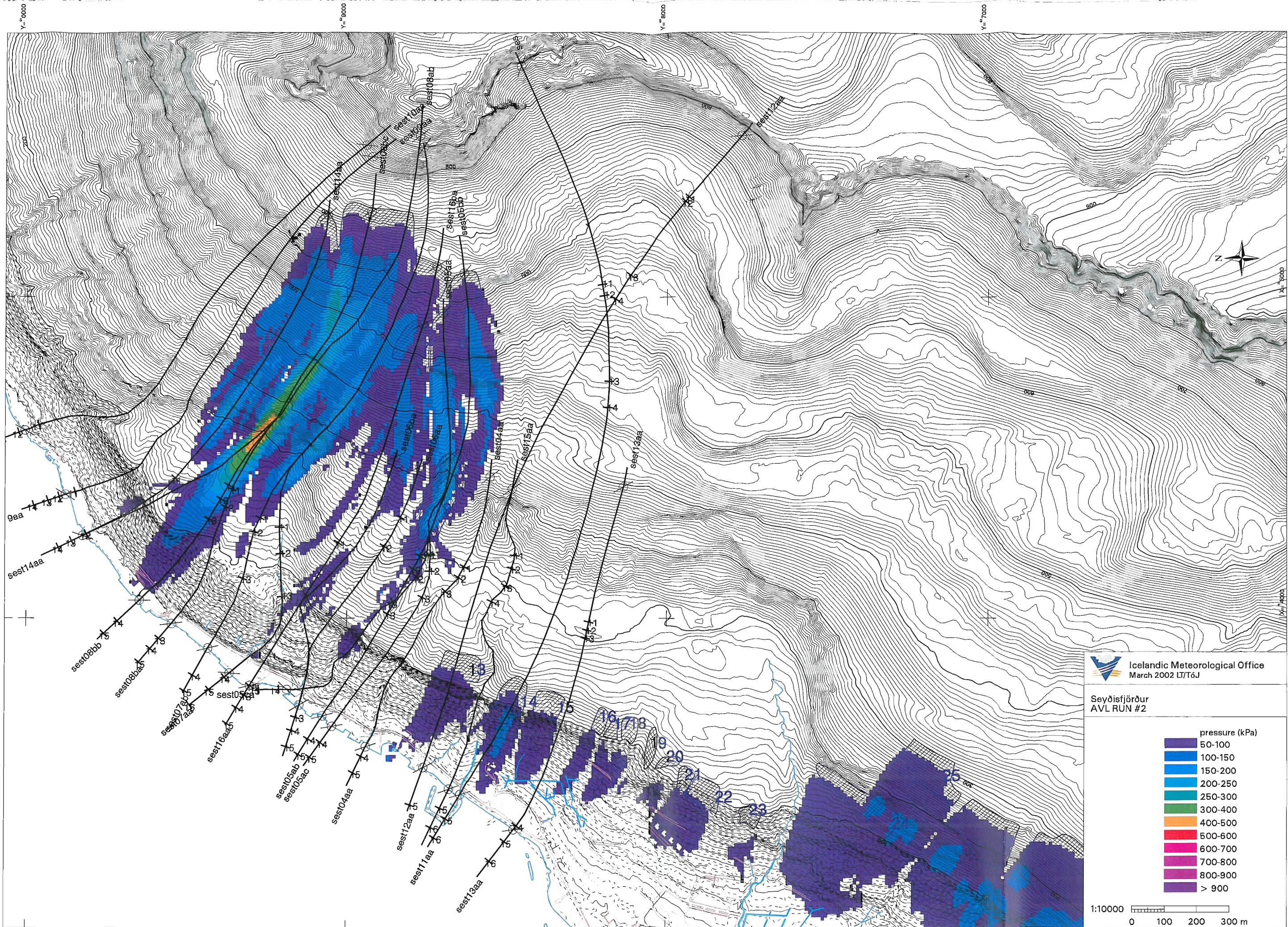




Icelandic Meteorological Office
March 2002 LT/T6J

Seyðisfjörður
AVL RUN #1



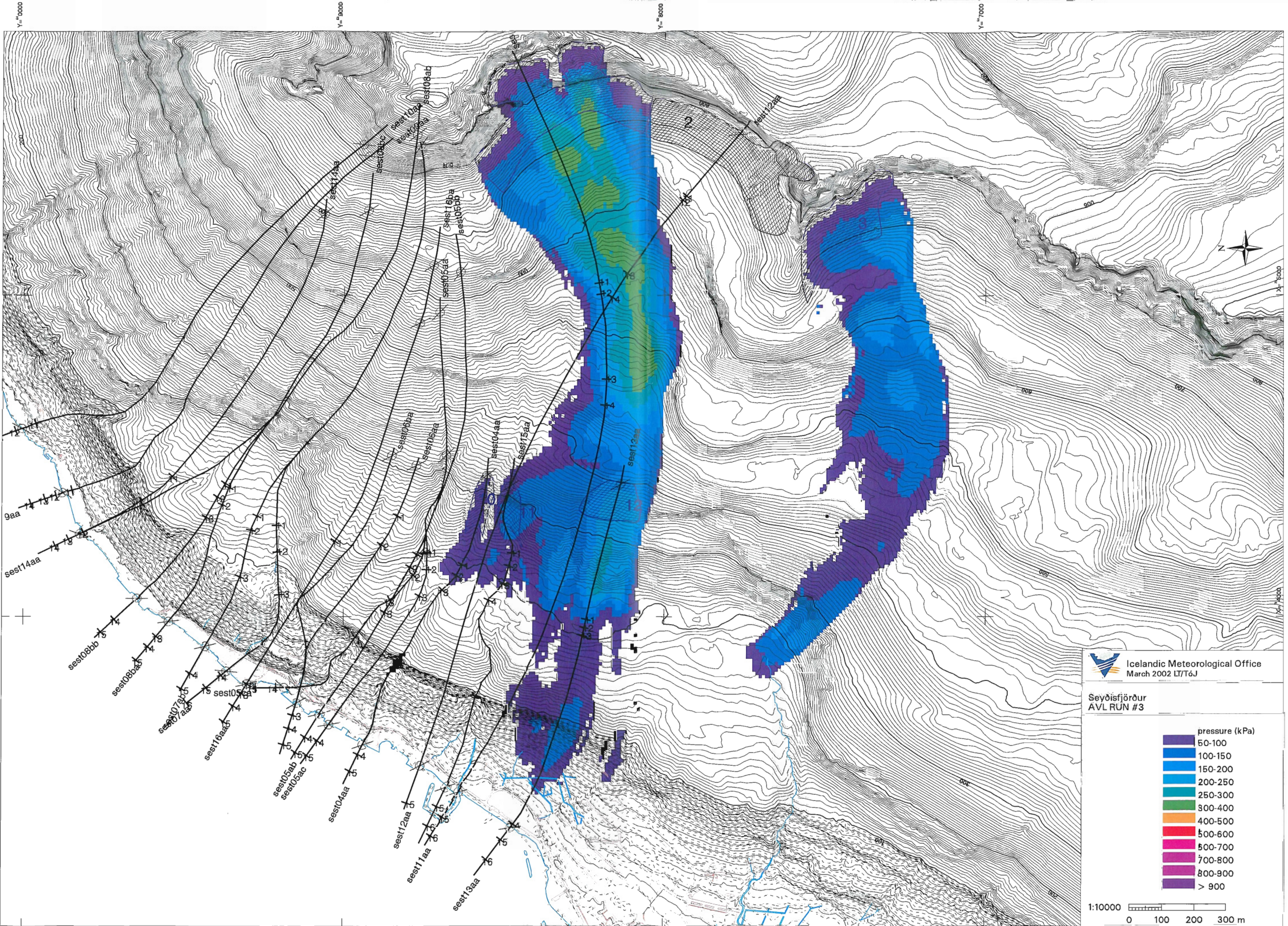


Icelandic Meteorological Office
March 2002 LT/T6J

Seyðisfjörður
AVL RUN #2

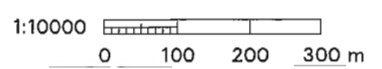
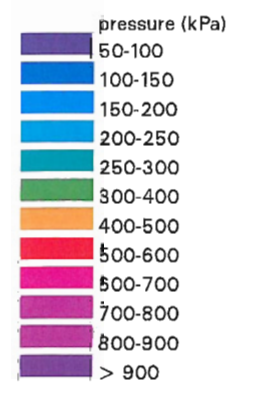
| pressure (kPa) |
|----------------|
| 50-100 |
| 100-150 |
| 150-200 |
| 200-250 |
| 250-300 |
| 300-400 |
| 400-500 |
| 500-600 |
| 600-700 |
| 700-800 |
| 800-900 |
| > 900 |

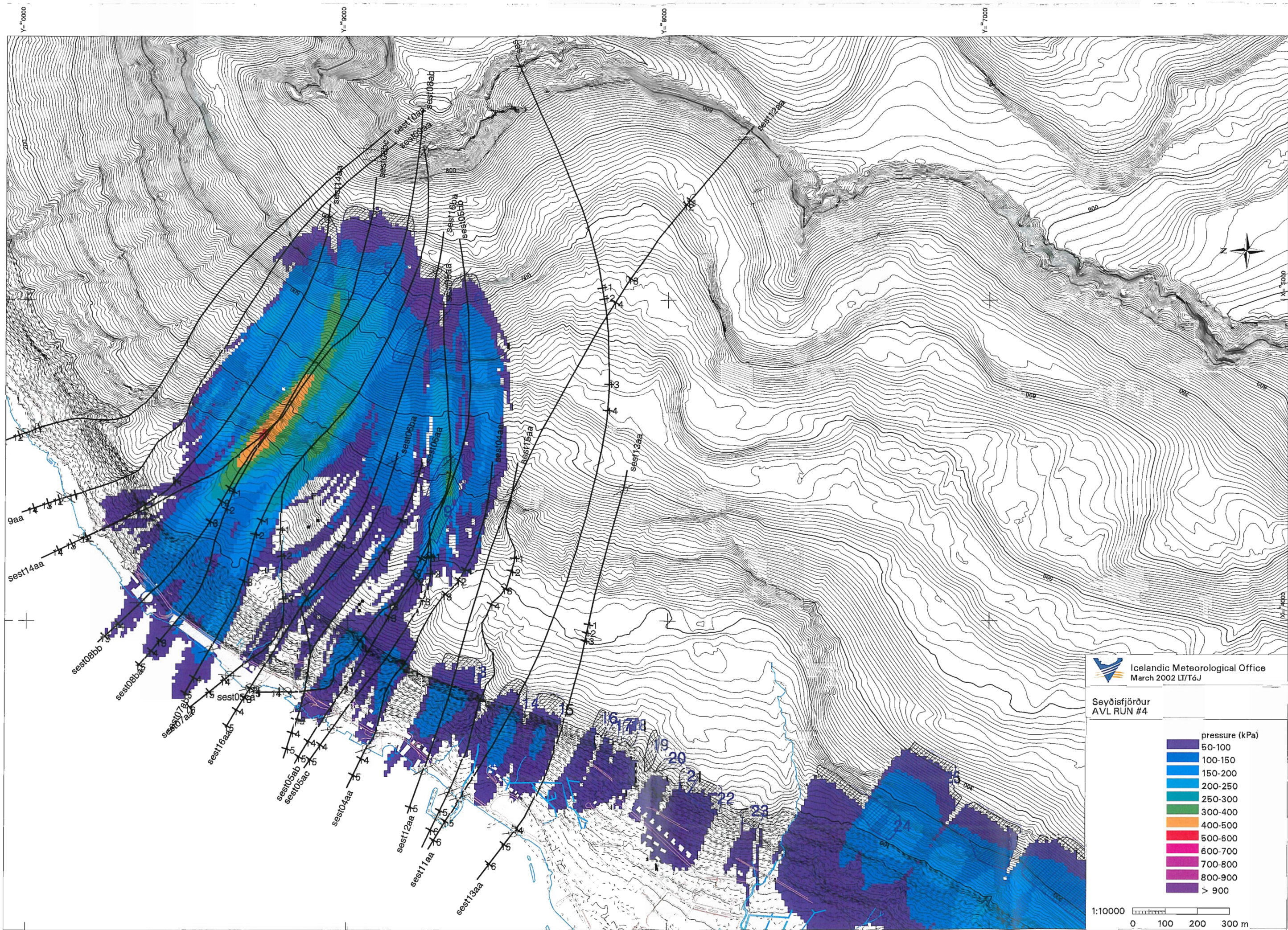
1:10000
0 100 200 300 m



Icelandic Meteorological Office
 March 2002 LT/TóJ

Seyðisfjörður
 AVL RUN #3






Icelandic Meteorological Office
 March 2002 LT/T6J

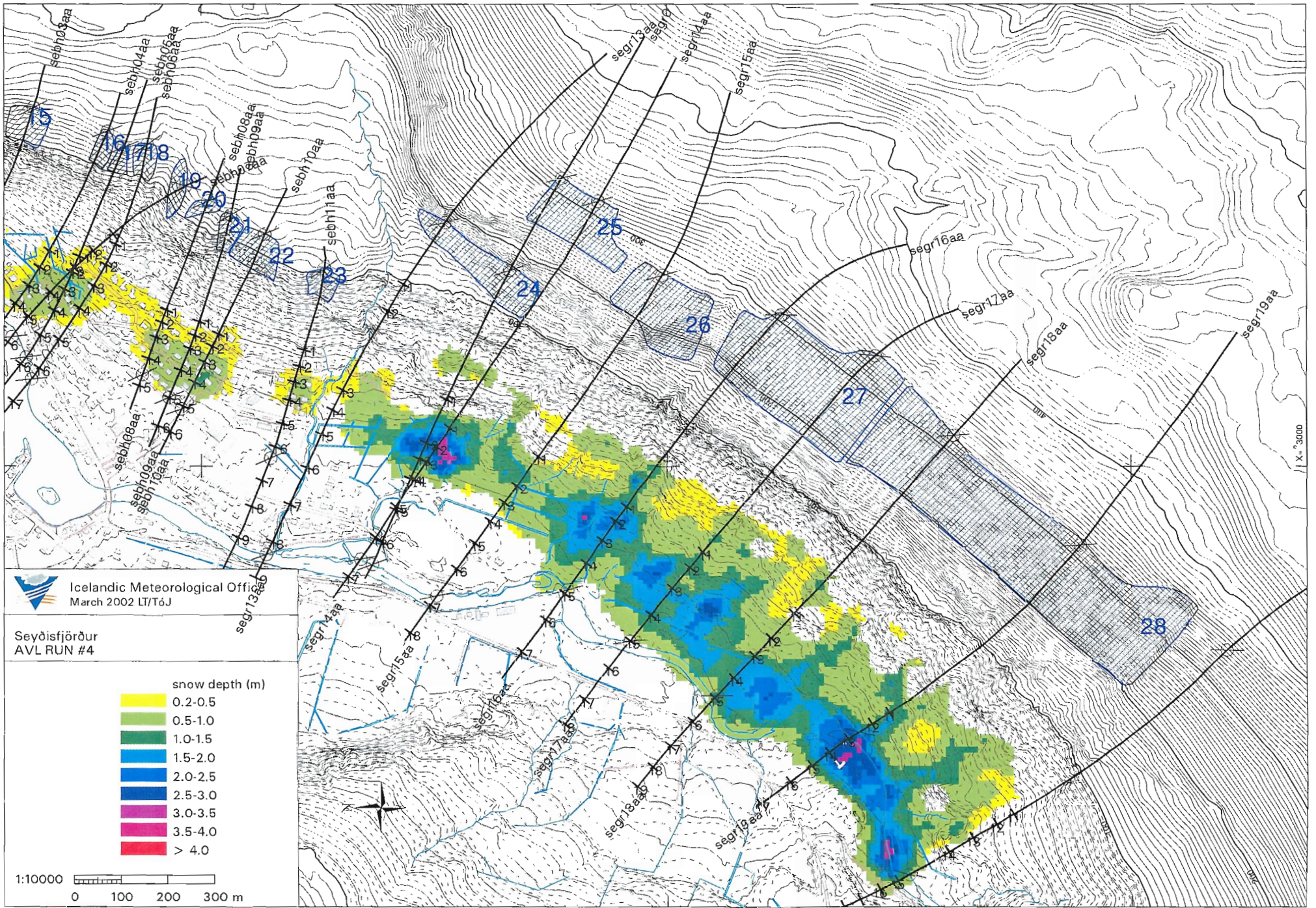
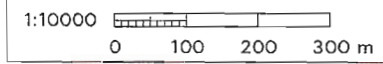
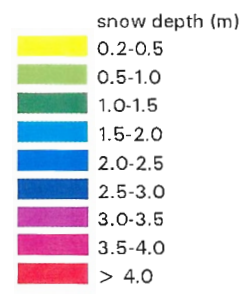
Seyðisfjörður
 AVL RUN #4

| pressure (kPa) | |
|----------------|--------------|
| 50-100 | Dark Purple |
| 100-150 | Blue |
| 150-200 | Light Blue |
| 200-250 | Teal |
| 250-300 | Green |
| 300-400 | Yellow-Green |
| 400-500 | Yellow |
| 500-600 | Orange |
| 600-700 | Red |
| 700-800 | Pink |
| 800-900 | Magenta |
| > 900 | Dark Blue |

1:10000
 0 100 200 300 m

 Icelandic Meteorological Office
March 2002 LT/T6J

Seyðisfjörður
AVL RUN #4

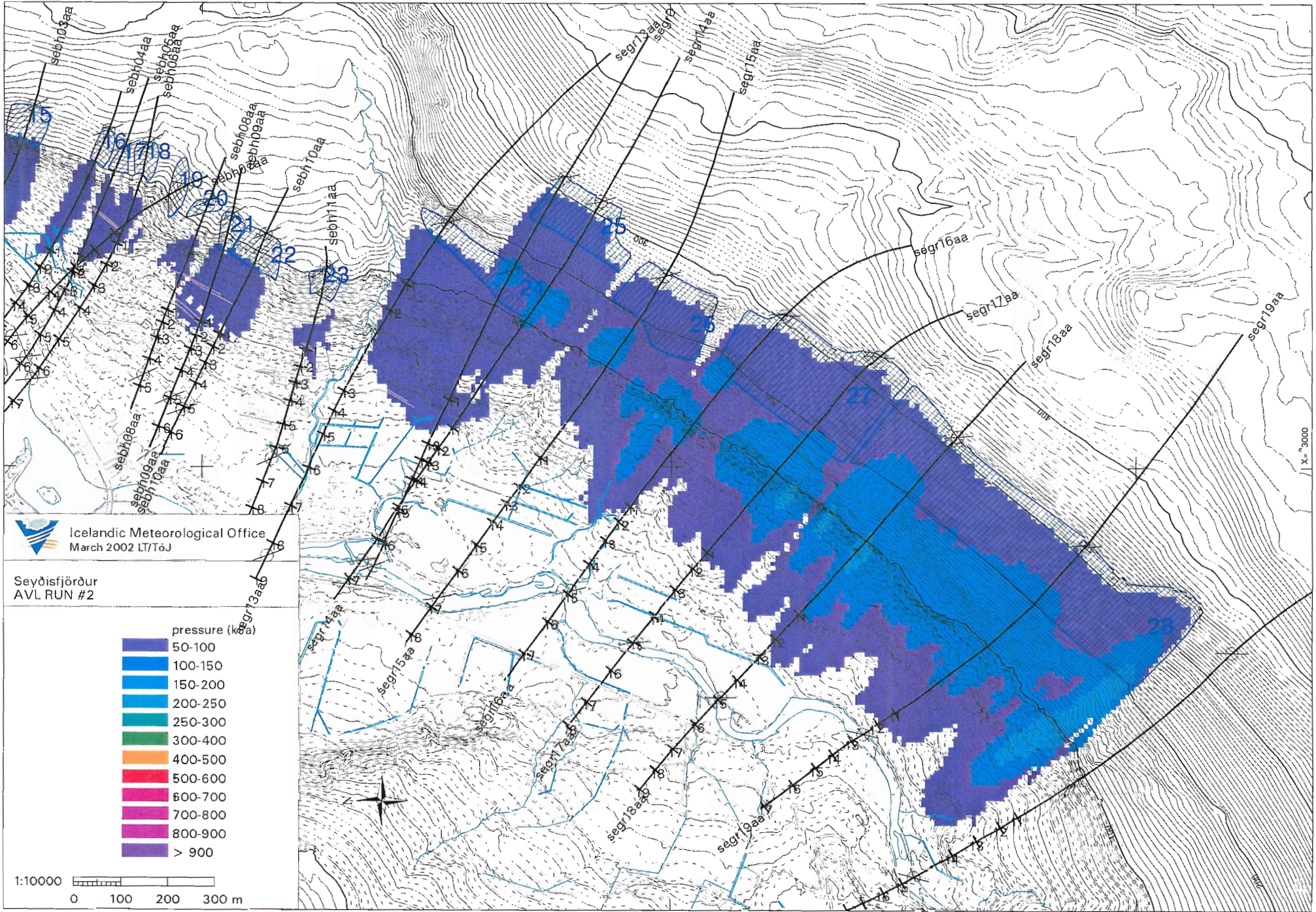



v. "8000

v. "7000

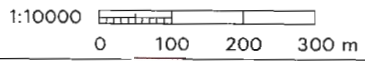
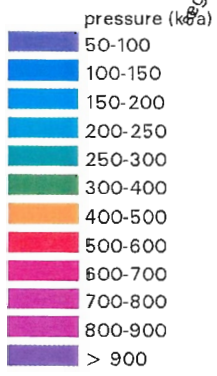
v. "6000

1 x "3000




 Icelandic Meteorological Office
 March 2002 LT/TóJ

Seyðisfjörður
 AVL RUN #2

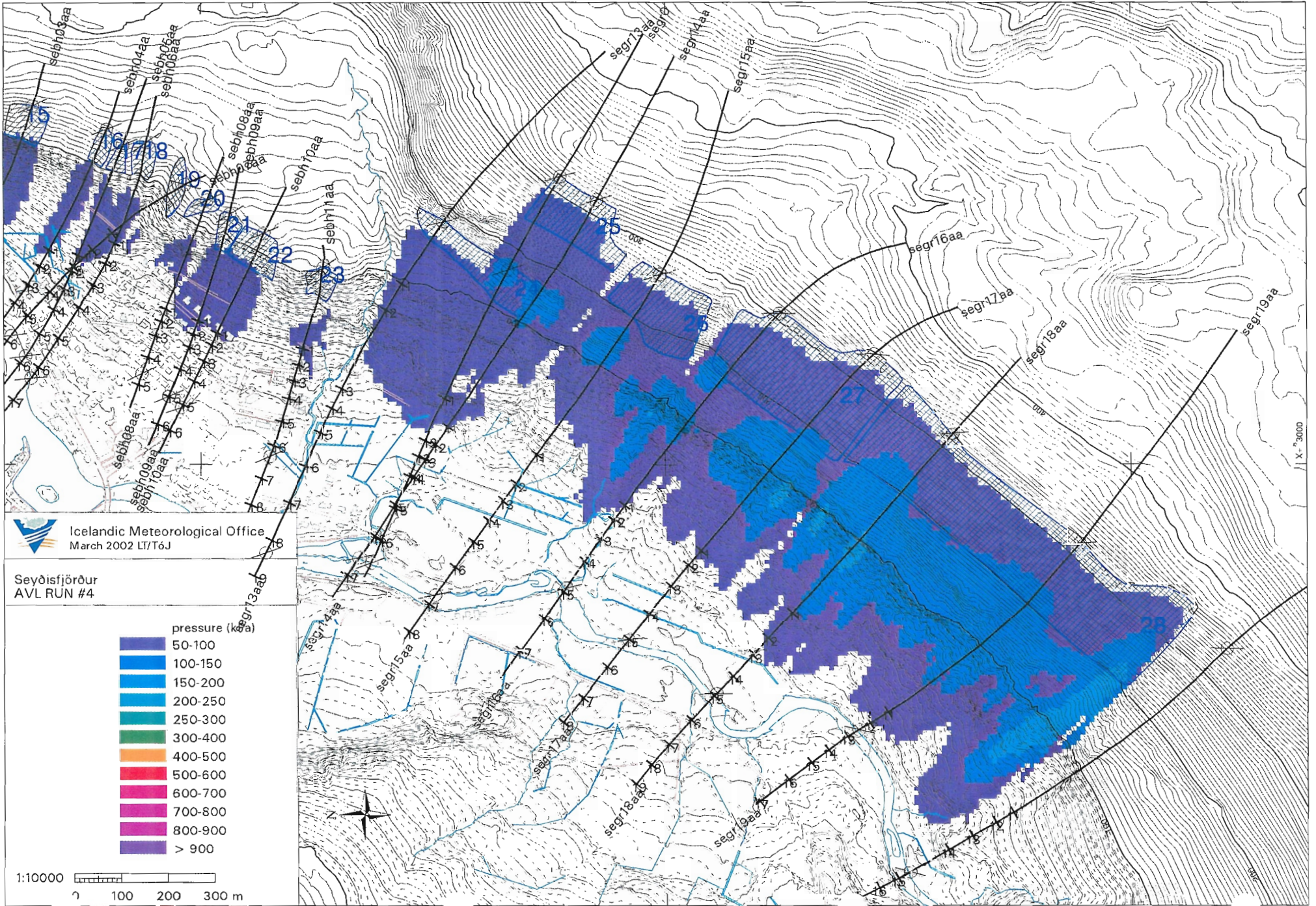


Y: "8000

Y: "7000

Y: "6000

X: "3000



Icelandic Meteorological Office
 March 2002 LT/TóJ

Seyðisfjörður
 AVL RUN #4

- pressure (kPa)
- 50-100
 - 100-150
 - 150-200
 - 200-250
 - 250-300
 - 300-400
 - 400-500
 - 500-600
 - 600-700
 - 700-800
 - 800-900
 - > 900

1:10000
 0 100 200 300 m



Y = 8000

Y = 7000

Y = 6000

X = 3000