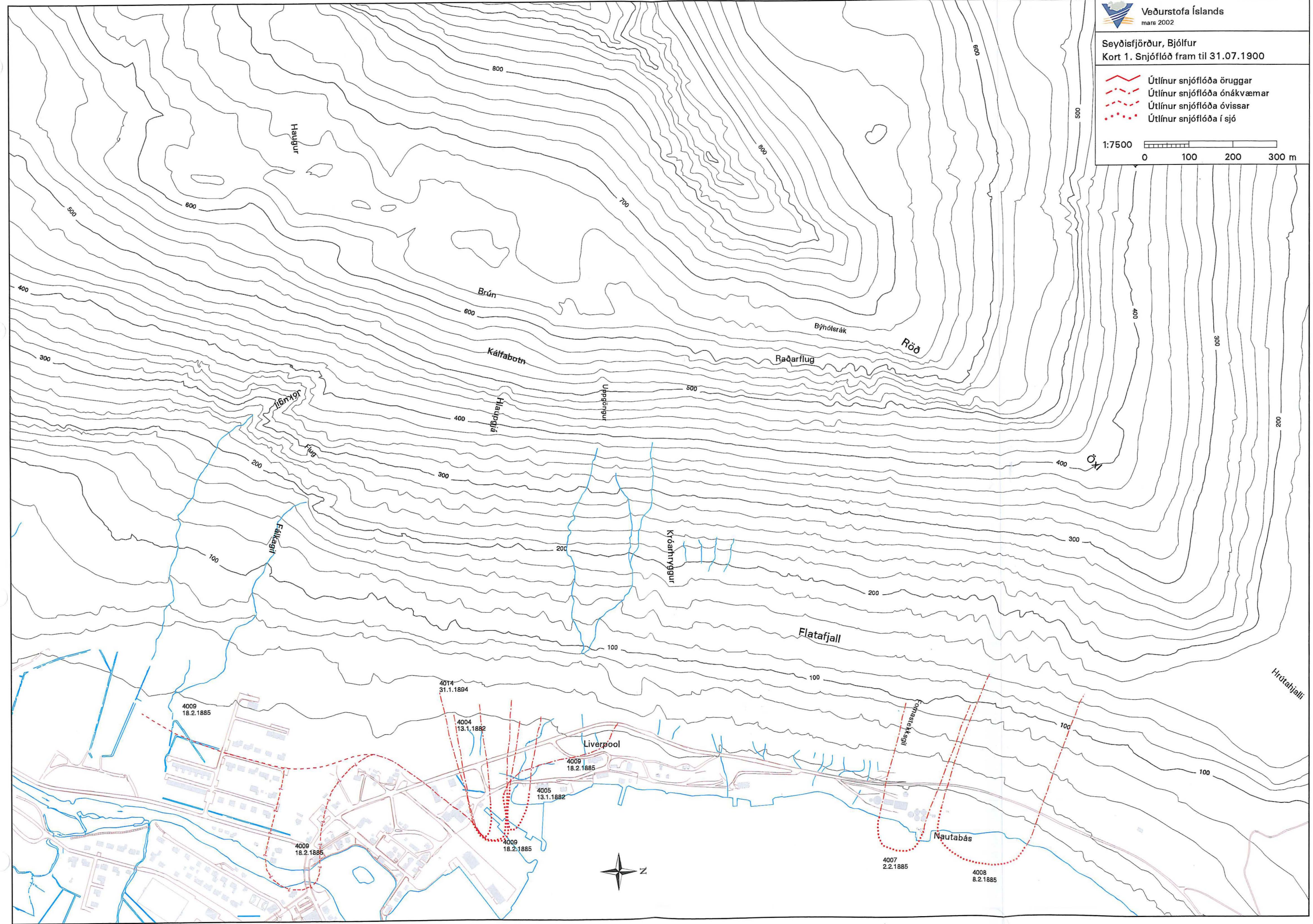
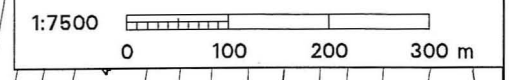


Seyðisfjörður, Bjólfur
Kort 1. Snjóflóð fram til 31.07.1900

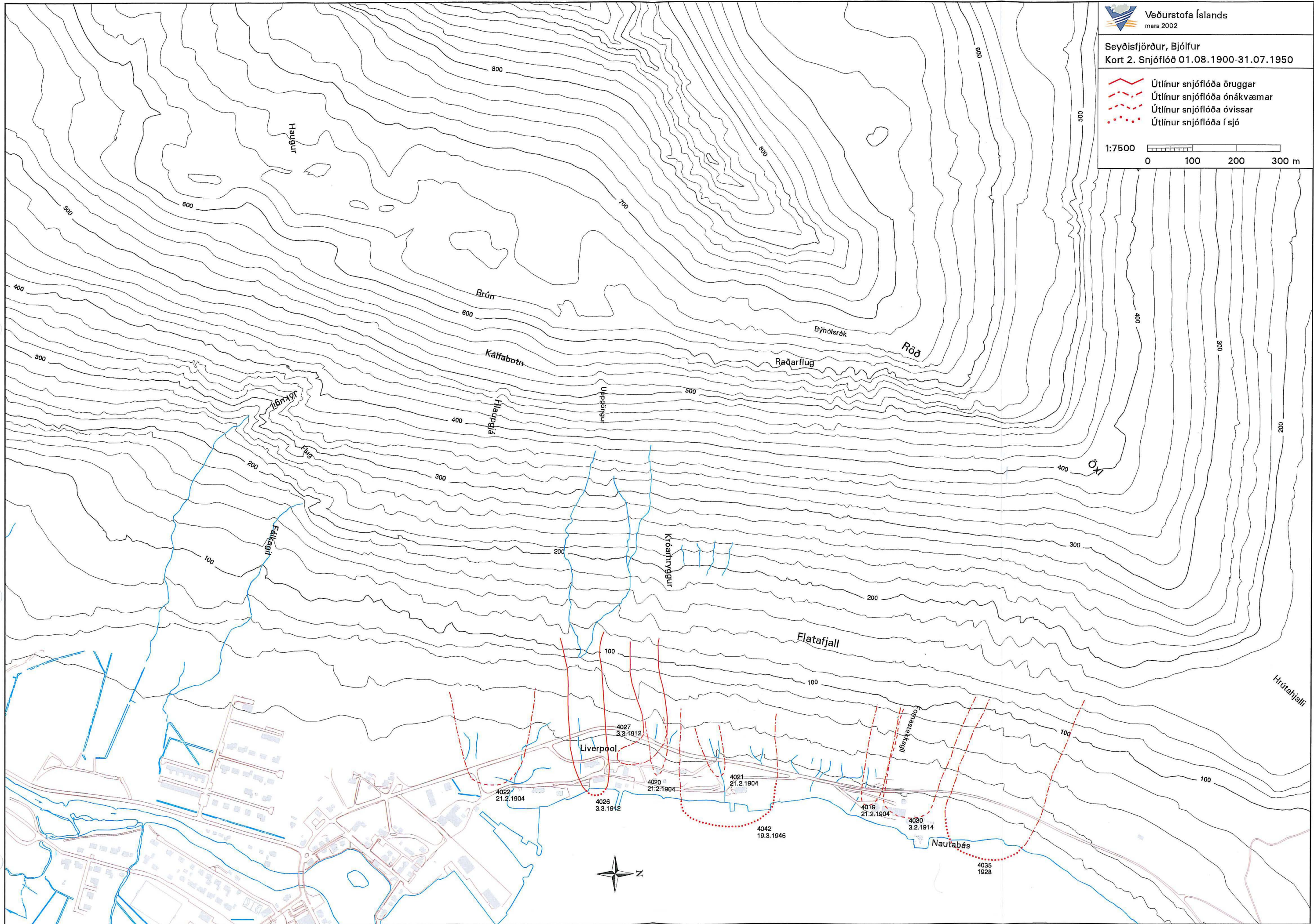
- Útlínur snjóflóða öruggar
- Útlínur snjóflóða ónákvæmar
- Útlínur snjóflóða óvissar
- Útlínur snjóflóða í sjó






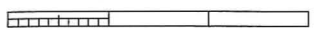
Seyðisfjörður, Bjólfur
Kort 2. Snjóflóð 01.08.1900-31.07.1950

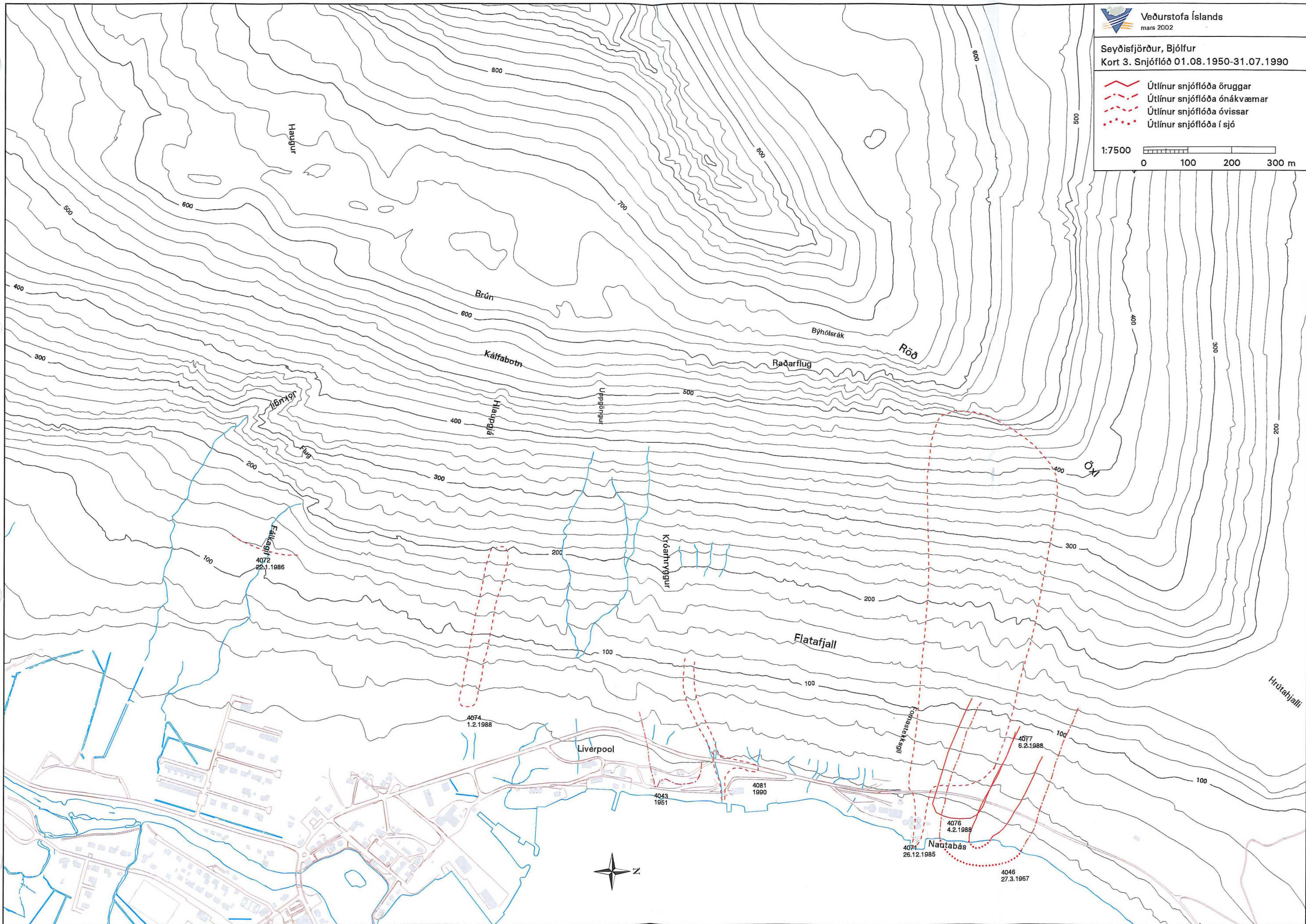
- Útlínur snjóflóða öruggar
- Útlínur snjóflóða ónákvæmar
- Útlínur snjóflóða óvissar
- Útlínur snjóflóða í sjó

1:7500
0 100 200 300 m



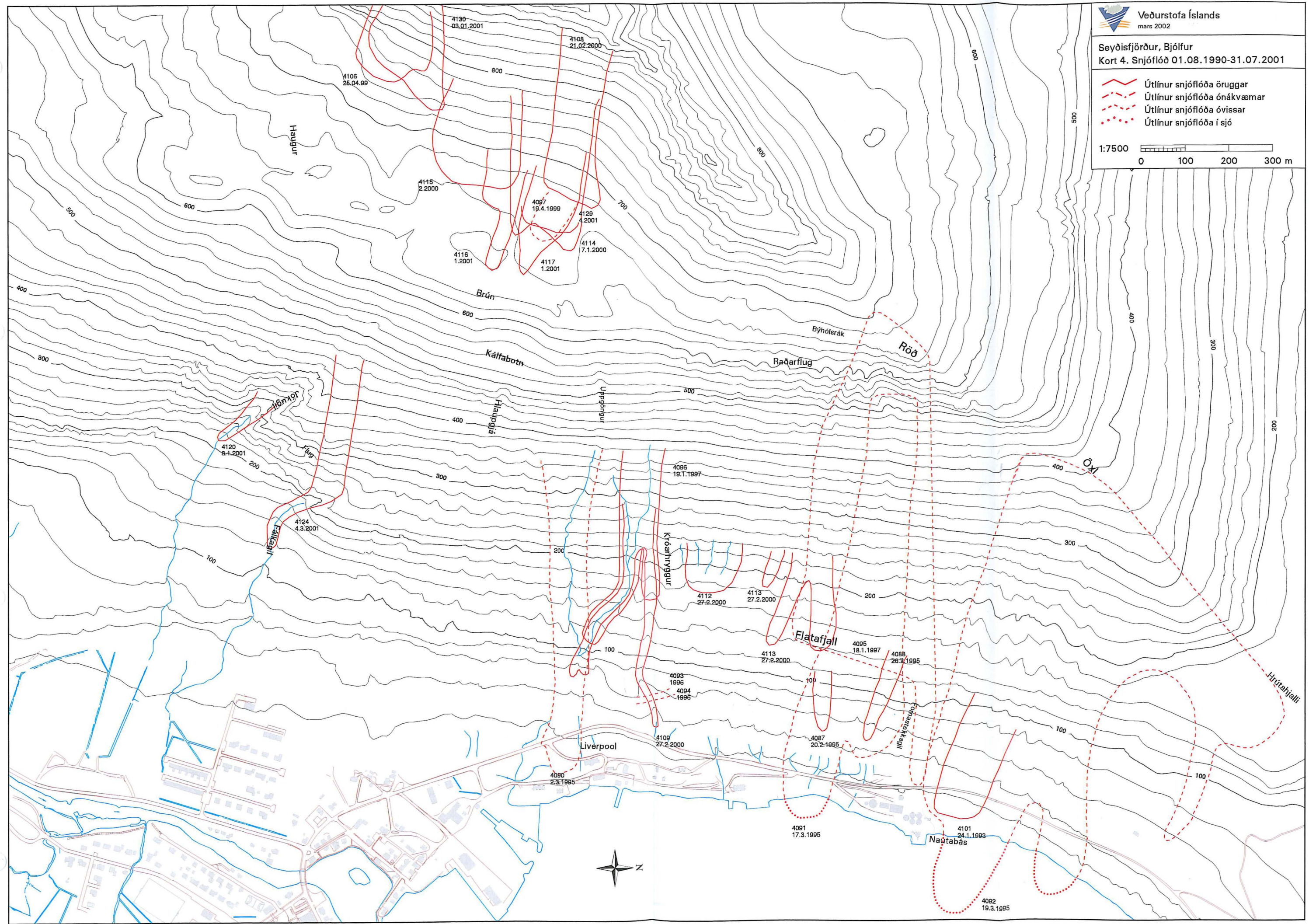
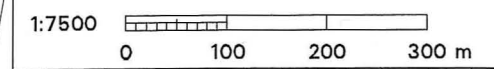
-  Útlínur snjóflóða öruggar
-  Útlínur snjóflóða ónákvæmar
-  Útlínur snjóflóða óvissar
-  Útlínur snjóflóða í sjó

1:7500 
0 100 200 300 m



Seyðisfjörður, Bjólfur
Kort 4. Snjóflóð 01.08.1990-31.07.2001

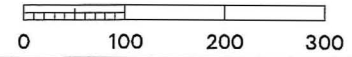
- Útlínur snjóflóða öruggar
- Útlínur snjóflóða ónákvæmar
- Útlínur snjóflóða óvissar
- Útlínur snjóflóða í sjó



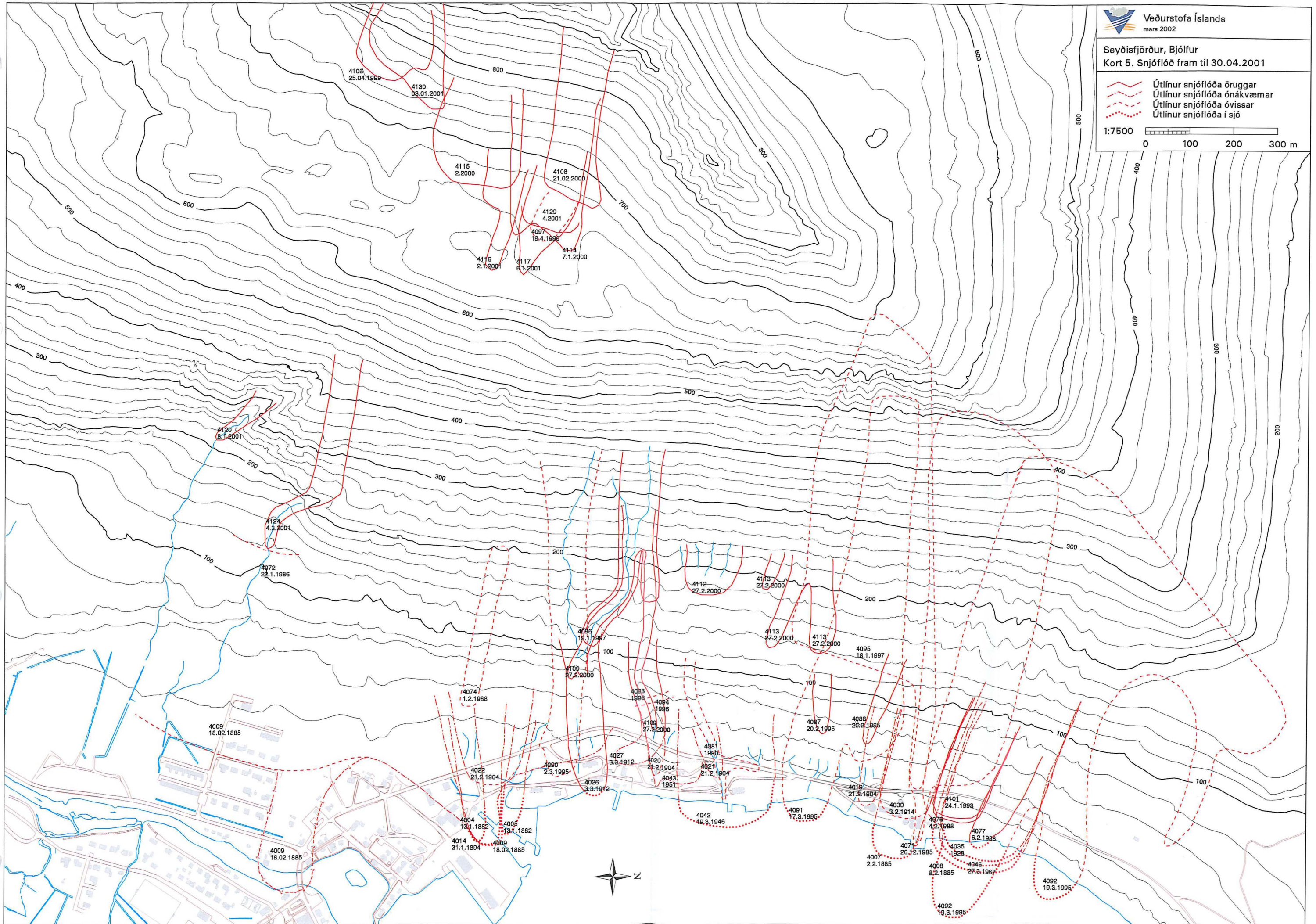
Seyðisfjörður, Bjólfur
Kort 5. Snjóflóð fram til 30.04.2001

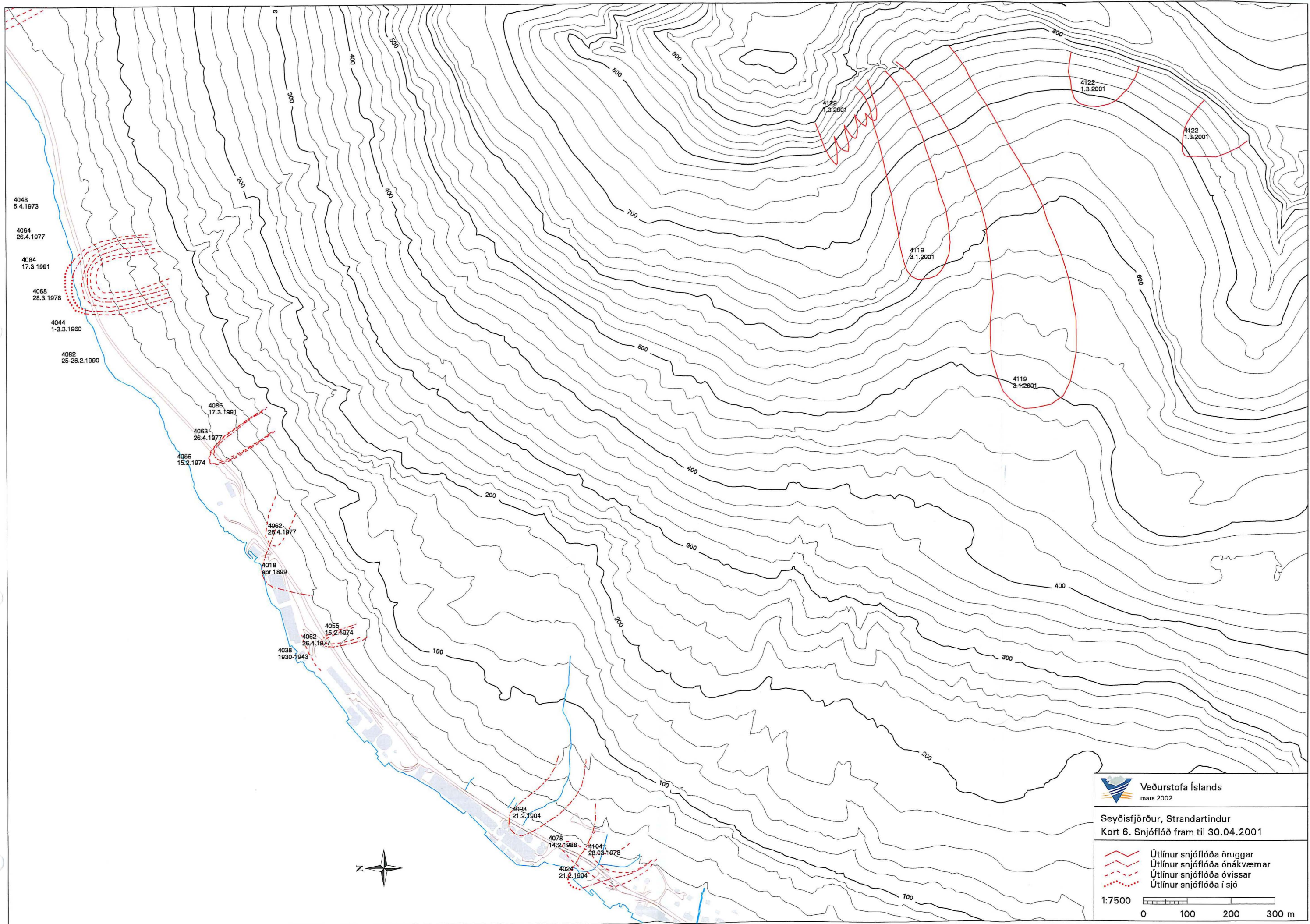
- Útlínur snjóflóða öruggar
- Útlínur snjóflóða ónákvæmar
- Útlínur snjóflóða óvissar
- Útlínur snjóflóða í sjó


1:7500







0 100 200 300 m







Veðurstofa Íslands
 mars 2002

Seyðisfjörður, Strandartindur
Kort 6. Snjóflóð fram til 30.04.2001

-  Útlínur snjóflóða öruggar
-  Útlínur snjóflóða ónákvæmar
-  Útlínur snjóflóða óvissar
-  Útlínur snjóflóða í sjó

1:7500  0 100 200 300 m

Seyðisfjörður
Kort 7. Snjóflóð fram til 30.04.2001

- Útlínur snjóflóða öruggar
- Útlínur snjóflóða ónákvæmar
- Útlínur snjóflóða óvissar
- Útlínur snjóflóða í sjó

