

ANNUAL REPORT 2014

(Short version)



NATIONAL AND UNIVERSITY LIBRARY OF ICELAND



Best of Reykjavík 2014

The National/University Library

BEST PLACE TO READ A BOOK

Góðan dag!

Þetta bréf er ritað í tilefni þess að staður á ykkar vegum var úthefndur sá besti á sínu sviði í nýjasta tölublaði tímaritsins Reykjavík Grapevine. Til hamingju með það - og takk fyrir að vera svona frábær og gera lífið í Reykjavíkurborg betra!

Enn eina ferðina höfum við hjá Reykjavík Grapevine tekið saman hefti sem tileinkað er því besta sem borgin okkar hefur upp á að bjóða. Sjötta árlega "BEST OF REYKJAVÍK" tölublað Grapevine kom á göturmar í 25.000 eintökum föstudaginn átjándi júlí, og enn og aftur hljóta rúmlega sextíu staðir/fyrirbæri hrós og klapp þar fyrir að vera bestir, hver á sínu sviði.

Hvernig er staðið að valinu? Jú, sigurvegarnir eru tilnefndir af lesendum okkar, greinarhöfundum, ljósmyndurum, hönnuðum og öðrum sem við rekumst á við okkar störf allt árið um kring. Þvínæst taka við stífar umræður og fundarhóld með stórum hópi áhugasamra um Reykjavíkurborg og lífið þar. Að spjallinu loknu stöndum við eftir með lista yfir það sem við teljum frábært í Reykjavík þetta árið - og þið eruð á honum í þetta sinn!

Við höfum hug á því að halda þessu framtaki við um ókomin ár, vinna hugmyndina áfram og bjóða árlega upp á marktækan lista. Ábendingar um góða staði og jafnvel nýja flokka eru vel þegnar í netfangið bestof@grapevine.is

Þar sem ykkar staður var valinn sá besti í flokknum "Best place to read a book" vildum við láta ykkur vita með þessu skeyti og um leið þakka kærlega fyrir að lífga upp Reykviskan veruleika. Með bréfinu fylgir gluggalímmíði sem við létum útbúa, þar sem kemur fram að staðurinn sé meðal þeirra bestu. Ef þið hafið áhuga megið þið skreyta ykkur eins og þið viljið með miðanum, í raun væri okkur heiður sýndur.

Enn og aftur: takk fyrir okkur!

Virðingarfyllt,

Anna Andersen
Ritstjóri Reykjavík Grapevine
editor@grapevine.is



Reykjavík Grapevine nominated the Library the best place in Reykjavík too read a book in the year 2014. The journal is available online on the website timarit.is.

National and University Library of Iceland: ANNUAL REPORT 2014.

Editor: Ingibjörg Steinunn Sverrisdóttir.

Layout: Erla Bjarnadóttir.

Cover illustration: Opening of the new building of the National and University Library of Iceland, December 1st 1994.

Photographs: Helgi Bragason.



FOREWORD FROM THE NATIONAL LIBRARIAN



The National and University Library of Iceland's aim is to be a source of knowledge for everyone. It serves the Icelandic community in all areas of reference and academic discipline and plays a leading role in the collection, preservation and dissemination of information, thus making a vigorous contribution to culture, research and creative work.

The budget was the same as last year, plus price upgrades, but the total cut since 2008 is around 25%. At the same time prices of all acquisitions to the Library have increased. The largest purchase items were for The Iceland Consortium for Electronic Subscriptions (ICES) as before, but the Consortium received a special contribution of 25 million ISK. The operational balance of the year 2014 ended in surplus, due to the favourable rate of the Icelandic króna and that special revenues were higher than predicted, mainly because of extra funding for exhibits and events.

Rationalization and downsizing is still on the agenda. Staffing positions (FTE's) were positive by 1.65 compared to last year. Travel, training and conferences were minimal. Planned outdoor maintenance work was postponed due to bad weather in the summertime, but instead upgrading and renewal of computer equipment was made.

Among milestones and big projects was the revision of the Library regulation nr. 170/2014. The equal opportunity policy and program were also revised and an equal wages policy was adopted and a transportation policy. A three year program for training and career development for staff was introduced. The TEL partnership Agreement (The European Library) was revised, but it opens the metadata from the Library in Europeana for the use of others. Several foreign projects ended, such as the *Europeana Newspaper*, *Medievo Europeo COST* and *Stories for all time: The Icelandic Fornaldarsögur*. The annual meeting and a conference of EDUG (European Dewey User Group) was held in the Library in May 22.-23. An

exhibition in commemoration of the 400th anniversary of the priest and poet Hallgrímur Pétursson was opened September 11th. A series of lectures about Icelandic book history were introduced during the winter 2014-2015 and the implementation of the RDA cataloging standard began, but the project will end in the autumn of 2016. The 20th anniversary of the amalgamation of the National and University Library in a new building was celebrated December the 1st.

TARGET AGREEMENT

Under the performance targets agreed on in 2005 between the Library and the Ministry of Education and Culture, the main emphasis has been on the Library's role as an information provider. A revision of the performance targets has been discussed, but not carried out. The focus is on the Library's roles as a digital national library and a digital research library. Work was done on the following tasks under these headings during the year:

DIGITAL NATIONAL LIBRARY

Digitization of Icelandic materials

The web Hljóðsafn (Sound Library) was opened and 10.000 sound recordings were available at the end of the year. The web, Icelandic bibliography 1534-1844, was also opened, containing detailed bibliographic information about Icelandic publications. The web will be connected to *baekur.is* and all the books will be digitized. The catalog Lykilskrá was also opened containing 10.000 keywords or subject headings and 77.500 surnames or authority files.

Several sponsored projects secured funding for digitization, mainly connected to the web *timarit.is*. The total number of digitized pages on *timarit.is* at the end of the year was 4.8 million. Digitization and cataloguing of manuscripts continued on *handrit.is* and 1.870 manuscripts have been digitized, a total of 426.000 pages. At the end of the year 1000 titles, a total of 316.000 pages, were accessible on *baekur.is*, and 771 maps from the years 1544-1951, in more than 1000 editions were accessible on *islandskort.is*. A new digital scanner from Qidenu was purchased.

Reception and harvesting of digital material

Icelandic websites are regularly harvested into the Icelandic web archive, *vefsafn.is*. Last year were

added copies of Icelandic websites from 1996-2004 from the Internet Archive, 47 million pages and 287 gigabytes. *Vefsafn.is* currently contains about 2.980 million documents or about 57 terabytes. At the end of the year about 50.000 URL's belonged to the .is domain.

The Library operates *Skemman.is*, an open-access repository for Icelandic universities, containing dissertations and staff research papers. It hosts nearly 21.000 works.

Rafhladan.is is a repository for Icelandic legal deposit digital materials. It is either collected by library staff or institutions, individuals or companies can deliver material over the web. It hosts around 7.000 entities.

Gegnir.is and Leitir.is

The Library staff has been active in developing *gegdir.is* which is the library system for majority of libraries in Iceland, and the discovery service *leitir.is*, both operated by the Consortium of Icelandic Libraries. *Leitir.is* gives information about books, audio-books, e-books, serials, articles, photographs, films, music, sound recordings, sheet music, reports and theses. Some of the items are available in digital format. The material comes from libraries and some other institutions. The aim is to include material from museums and archives.

DIGITAL RESEARCH LIBRARY

National Access

Contracts were made with Karger for the period 2015-2017 and with Springer for 2013-2015. One year contract was made for *EBSCOhost Premier*, *ProQuest Central*, *SAGE Premier* and *Morgunblaðið*. The subscription of *Oxford Art Online* was terminated.

A focus group compared material in *EBSCOhost* and *ProQuest Central* and submitted a report in June. Content in these collections overlap and there is also an overlap with other packages in subscription. The metadata from *ProQuest* became accessible in *leitir.is* through Primo Central Index in the end of the year, but EBSCO has not made such an agreement with ExLibris.

Icelandic universities give access to subscriptions in ICES and their own subscriptions through the *Finna timarit* list, using the SFX link solver and A-Z list, but the metadata comes from Primo Central Index. The majority of the content is also searchable in *leitir.is* which also offers the bX Recommender Service. The systems are operated by Consortium of Icelandic Libraries. Usage of the ICES subscriptions was similar as last year.

Áttavitinn – the Compass

Áttavitinn is a new service for university students and researchers. It is a management system for content based on LibGuides from Springshare. The LibGuides refer to search-aides, databases and information materials. Twenty guides are available.

Websites and Social Media

At the end of the year, 20 webs or web services were in operation but some of them are collaboration projects. Web traffic is monitored by Modernus and Google Analytics, giving different results. The usage is similar as last year, and the mean average usage in 2014 is 5.500 daily visits, giving 27.000 pages to the users. Usage by smart devices is 11% but varies between websites.

The Library has a Facebook page that is used to announce news, events and changes and it has more than 1900 connected friends. Eight units within the Library have their own Facebook pages. The users of Uglan, the intranet of the University of Iceland, can add a Library Link to their personal pages.

Open Access

According to rules issued by Rannís - The Icelandic Centre for Research in 2013, the publishing of research funded by Rannís shall be in open access. Rannís referred scientists to *skemman.is* and *hirslan.is* as repositories. The University of Iceland approved an open access policy in February, and also a procedure of how to publish in OA. The policy was supposed to take effect in July 1st, but was postponed until January 1st 2015.

Current Research Information System

One of the reasons for postponing the OA policy of the University of Iceland was a delay of the purchase and operation of a CRIS system for Iceland. The project was discussed and the Ministry of Education organized a introductory meeting in October and also meetings with vendors. The project was moved to the Ministry and a project manager is to be hired. The Library is interested in the development of the system and supervision of registration of metadata and information.

This report gives an account of the main projects carried out over the year 2014 at the Library, with statistics reflecting performance, key figures covering operations and the main figures from the financial statements.

Ingbjörg Steinunn Sverrisdóttir
National Librarian

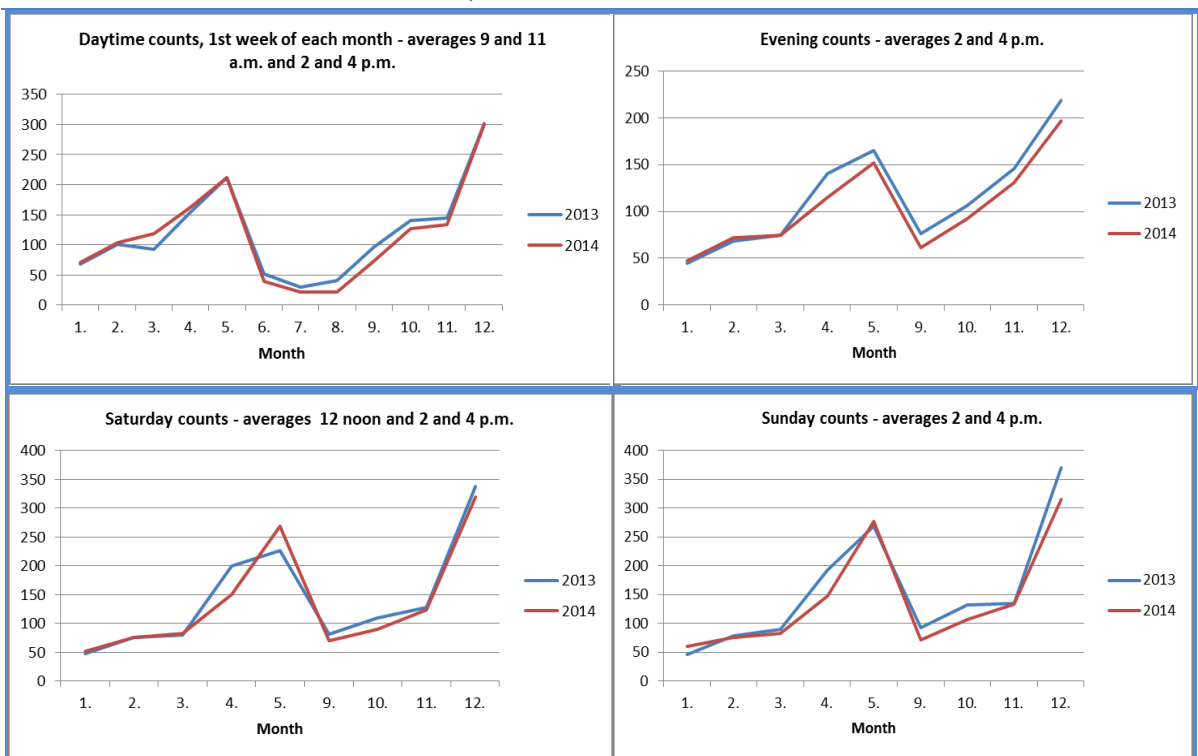
KEY STATISTICS

At the end of each year, statistics are processed covering users and the services provided, and also the Library's holdings, acquisitions and various aspects of its operations, such as the work of the Photographic Unit and the Bookbinding Unit, staffing levels and the Library's financial position. Some changes have been introduced to the presentation of these statistics, with the aim of simplifying them and bringing them into line with changes in operations.

USERS AND SERVICES

Library users include both those who visit the Library and those who make use of its websites. Guests using the Manuscript Department and National Department reading room are counted; precise counts of other users are not feasible, but surveys are made of users of the open areas on the 3rd and 4th floors in the first week of each month. On weekdays during the university examination season, their numbers can reach up to 300.

GUESTS USING 3RD AND 4TH FLOORS, 2013-2014



WEBSITE USAGE¹

	Number of visits		Pages opened	
	2013	2014	2013	2014
timarit.is (Newspapers and journals)	1.134.939	1.042.669	6.590.156	5.938.818
skemman.is (Dissertations - research papers)	525.461	533.616	2.252.161	2.194.067
landsbokasafn.is (Main Library website)	127.942	112.102	323.448	269.165
hvar.is (ICES)	83.797	68.045	170.895	125.758
handrit.is (Manuscripts)	40.663	48.950	224.228	241.421
vefsafn.is (Archived web pages)	24.491	61.447	211.980	352.216
baekur.is (Books)	24.343	24.978	316.940	319.479
jonashallgrimsson.is (The poet Jónas H.)	19.969	18.409	50.736	43.264
islandskort.is (Antique maps of Iceland)	15.702	13.109	70.748	49.577
rafhladan.is (Born digital legal deposit)	11.599	15.978	80.233	71.667
kvennasogusafn.is (Women's history archive)	10.048	9.333	23.666	19.278
inngangur.landsbokasafn.is (Intranet)	49.884	56.064	132.278	134.285
utgafuskra.is (Icelandic national bibliography)	3.026	3.256	7.619	8.645
hask.landsbokasafn.is (Cataloguers' handbook)	7.688	8.933	46.332	58.909
doktor.landsbokasafn.is (Doctoral theses)	1.780	1.682	21.419	18.778
sagas.landsbokasafn.is (Saga translations)	1.522	1.709	4.887	9.852
munlegsaga.is (The Center for Oral History)	733	1.888	2.400	5.105
hljodsafn.landsbokasafn.is	0	1.759	0	28.289
lykilskra.landsbokasafn.is	0	4.073	0	29.620
bokaskra.landsbokasafn.is	0	470	0	4.586
Total	2.083.587	2.028.470	10.530.126	9.922.779

USE OF DIGITAL JOURNALS AND DATABASES

Articles downloaded:	2011	2012	2013	2014
Via ICES ²	1.128.802	1.261.809	1.177.235	1.243.885
From Morgunblaðið.	2.942.890	2.598.155	2.009.862	1.771.220
Via subscriptions of University of Iceland ³	70.381	90.513	110.030	83.343
Total	4.142.073	3.950.477	3.297.127	3.098.448

LIBRARY CARDS ISSUED

	2011	2012	2013	2014
Students at the University of Iceland	13.890 ⁴	13.311	13.720	12.887
University and Library staff	793	657	990	416
Other students	431	297	342	290
Other borrowers	1.174	930	681	573
Total	16.288	15.195	15.733	14.166

¹ The presentation of web usage has changed, now the number of visits is counted instead of number of users.

² Further information on the use of the national licences can be found in the annual report of the Icelandic Consortium for Electronic Subscriptions (ICES) on the website *hvar.is*.

³ It is difficult to get reliable figures on the use of some of the University's subscriptions and the data is unstable. A list of the subscriptions is on page 35 in the Icelandic version of the Annual Report.

⁴ Information of enrolled students at the University is automatically loaded into the library system Gagnir from the Student Registration. This saves a lot of work and time, but separation of active and inactive student users is not possible. The number of students is decreasing.

READING ROOM FOR MANUSCRIPT AND NATIONAL COLLECTIONS

Number of visitors	2011	2012	2013	2014
Males		3.718	2.925	2.703
Females		1.635	1.265	1.274
Total	7.150	5.353	4.190	3.977

RENT OF READING ROOMS

Number of months		2012	2013	2014
Males		68	60	71
Females		249	237	227
Total		317	297	298

PRINTING AND COPYING BY LIBRARY USERS

Number of pages	2011	2012	2013	2014
Printed	669.873	338.067	217.577	102.050
Photocopied	242.711	175.372	183.127	70.499

CIRCULATION

	2011	2012	2013	2014
Circulation – main Library and departmental libraries in the University of Iceland				
Students at the University of Iceland	39.621	37.678	34.629	31.892
University and Library staff	7.495	6.671	2.006	5.967
Other students	3.054	2.920	5.990	1.920
Other borrowers	7.644	7.082	6.126	5.343
Total	57.814	54.351	48.751	45.122
National Collections materials used in the Reading Room	9.565	5.635	4.545	5.186
Manuscripts used in the Reading Room	3.684	2.780	2.342	2.346
Audio-visual Collection				
Sound recordings - loans	89	51	48	41
Films and related materials - loans	1.430	1.222	1.075	776
Digital materials - loans	52	35	28	22
Printed music - loans	86	125	163	99
Films and related materials used on site	235	254	252	224
Sound recordings used on site	183	168	160	147
Total	15.324	10.270	8.613	8.841
Total loans	73.138	64.621	57.364	53.963

INTER-LIBRARY LENDING AND ARTICLE SERVICES

Number of users			2013	2014
Males			1.115	930
Females			1.432	1.185
Total			2.547	2.115

INTER-LIBRARY LENDING AND ARTICLE SERVICES

	2011	2012	2013	2014
To the Library				
Books, films etc.	1.345	1.178	1.157	1.101
Photocopies	1.197	1.170	917	1.002
From the Library				
Books, films etc.	523	440	391	365
Photocopies	566	312	517	418
Total	3.631	3.098	2.982	2.886
To the Manuscript Collections	38	24	3	0
From the Manuscript Collections	81	70	52	27
Total	119	94	55	27
Total Inter-library loans	3.750	3.194	3.037	2.913

REFERENCE SERVICES

	2011	2012	2013	2014
Number of users attending training courses				
Introductory courses for UI staff/students	767	996	1.027	1.386
Advanced courses for UI staff/students	989	736	841	1.146
Others	24	81	5	25
Total	1.780	1.813	1.873	2.557
Number of training courses				
Introductory courses for UI staff/students	29	46	42	38
Advanced courses for UI staff/students	54	47	23	39
Others	10	4	1	2
Total	93	97	66	79
Publications				
New leaflets	4	7	12	0
Re-issued leaflets	23	23	22	20
Guidelines in Áttavitinn				20
Total	27	30	34	40
Enquiries handled				
Reference				
By e-mail	544	566	479	435
By phone or in person	114	193	324	214
Extensive reference searches	25	47	47	45
Audio-visual Collections	18	15	36	27
National Collections	22	17	19	25
Women's history archive (visits and enquiries)	335	277	398	305
Center for Oral History		25	26	20
Total	1.058	1.140	1.329	1.071
Exhibitions	3	11	11	11
Social media – number of entries				
Facebook - National and University Library				124
Facebook - Manuscript Collections				54
Facebook - National Collections				4
Facebook - Music and Film Collections				12
Facebook - Women's Archives				58
Facebook - Center for Oral History				3
Facebook - ICES				119
Facebook - timarit.is				123
Facebook - bækur.is				18
Twitter - National and University Library				420

COLLECTIONS AND FINANCIAL MANAGEMENT

ACQUISITIONS

Items received under legal deposit ⁵	2011	2012	2013	2014
Books (printed works registered as books) ⁶	6.458	5.260	5.306	7.463
Periodicals (individual issues)	6.579	6.943	5.539	5.216
Newspapers (individual issues)	6.226	7.125	5.944	6.516
Annual reports	579	444	396	173
Posters	334	268	99	56
Maps	49	11	18	17
Printed ephemera	6.372	8.026	6.240	8.726
Sound recordings ⁷	915	769	356	544
Video tapes and DVDs ⁸	93	60	29	54
Audio books	60	180	224	217
Multimedia discs/computer data	14	8	8	28
Digital items in Skemman	2.779	2.207	3.938	3.186
Digital items in Rafhlaðan	1.424	56	2.105	3.781
Web archiving – documents (thousands)	2011	2012	2013	2014
The Icelandic web domain	266.623	285.703	277.228	295.721
Weekly selected archiving	75.503	98.171	132.168	132.877
Event-related collections	15.857	1.164	48.513	1.572
Collection from Internet Archive 1996-2004			47.000	
Total documents (thousands)	357.983	385.038	504.909	430.170
Other acquisitions	2011	2012	2013	2014
Books, purchased ⁹	2.525	3.287	2.900	
Books - NULI Services and University relations				831
Books - NULI National Collections				495
Books - University of Iceland				1.205
Books, donations/exchanges	6.532	3.574	3.224	5.501
Foreign periodicals, paid by Library	511	582	598	600
Foreign periodicals, paid by UI institutions	30	28	10	7
Foreign periodicals, donations/exchanges	310	300	230	220
Periodicals, back-numbers (volumes)	203	160	57	131
Icelandic periodicals, purchased	109	104	101	111
Icelandic periodicals, donated	50	40	25	25
Sound recordings, purchased	186	136	59	159
Sound recordings, donated	6	24	55	51
Video tapes and DVDs, purchased	300	319	95	48
Video tapes and DVDs, donated	145	36	20	105
Audio books	3	2	3	17
Databases for NULI, UI and others ¹⁰				30
Acquisitions by Manuscript Collection	80	53	87	74
Acquisitions by Women's history archive	13	11	18	10
Acquisitions by Center for Oral History	14	28	23	9

⁵ Counting of the three copies of books, newspapers, audio discs and multimedia discs that are preserved in the Library; but two copies of printed ephemera and posters are counted. The figures for ephemera are estimates.

⁶ Number of registered copies in the National Collections 2014 is based on statistics from Consortium of Icelandic Libraries.

⁷ Counting of copies of published sound recordings preserved. Here also titles published by individuals, choirs and bands.

⁸ Titles.

⁹ Counting of purchased books is has been changed and is more detailed.

¹⁰ NULI paid for or took part in paying 11 databases and schools / faculties of the University of Iceland for 26 databases.

PHOTOGRAPHIC UNIT

	2011	2012	2013	2014
Digital images (pages)				
Newspapers and periodicals	357.740	316.188	163.275	154.065
Books	88.912	54.670	84.545	17.759
Manuscripts	41.644	21.097	15.974	30.247
Maps	20	939	190	0
Not published on the Library's websites		31.118	3.492	2.300
Albums and covers for the Sound Archive				2.091
Total pages	488.316	424.012	267.466	206.462

BINDING SERVICES

	2011	2012	2013	2014
Units	48.587	43.275	44.066	48.498

ISSN AND ISBN

ISSN (International Standard Serial Number)	2011	2012	2013	2014
ISSNs assigned	23	25	46	117
ISBN (International Standard Book Number)				
Registrant element ranges assigned	69	88	56	71
Individual ISBNs assigned	194	214	228	220
ISMN¹¹ (International Standard Music Number)				
Registrant element ranges assigned			6	6
Individual ISMNs assigned			4	4

AVERAGE FULL-TIME-EQUIVALENT STAFF PER UNIT

	2011	2012	2013	2014
Administration and IT	20.78	17.63	18.13	19.13
Acquisitions and cataloging	9.00	8.50	9.75	9.20
National collections and digital conversion	11.75	13.05	12.00	12.25
Communications and electronic access	19.20	17.32	18.00	18.15
Services and university relations	11.52	12.88	10.90	11.70
Total FTE's	72.25	69.38	68.78	70.43
Personnel by category FTE's	2011	2012	2013	2014
Qualified librarians	24.70	24.30	23.55	26.15
Librarians with university degrees	21.93	21.45	21.43	19.43
Other librarians	11.47	11.48	10.90	11.70
Assistants and office staff	6.25	3.00	4.00	3.25
Other staff	7.90	9.15	8.90	9.90
Total FTE's	72.25	69.38	68.78	70.43

¹¹ The Library became an International Standard Music Number (ISMN) agency for notated music in 2013.

OPERATING EXPENSES (ISK '000)

	2011	2012	2013	2014
Payroll	418.866	425.890	433.369	479.552
Acquisitions	266.583	297.469	307.702	292.008
Other expenses	229.736	241.158	236.704	247.473
Total	915.185	964.517	977.775	1.019.033
Percentage breakdown %	2011	2012	2013	2014
Payroll	45.8	44.2	44.3	47.1
Acquisitions	29.1	30.8	31.5	28.7
Other expenses	25.1	25.0	24.2	24.2

INCOME STATEMENT (ISK '000)

Income	2013	2014
University of Iceland's allocation for acquisitions	42.974	42.310
Fees for Icelandic Consortium for Electronic Subscriptions (ICES)	113.194	118.166
Other income	55.303	67.523
Government appropriation	747.176	811.623
Total	958.647	1.039.622
Expenses		
Payroll	433.369	479.552
Operation and maintenance of buildings	122.604	128.852
Purchase of acquisitions	71.703	69.558
Icelandic Consortium for Electronic Subscriptions (ICES)	235.999	222.450
Systems (Consortium of Icelandic Libraries. etc.)	23.794	23.443
Operation of computer systems and technical equipment	35.545	35.060
Other expenses	54.761	60.118
Total	977.775	1.019.033
Operating surplus	-19.128	20.589



Guests at the opening of the exhibition *Kerguelen en Islande*.

vinna heiðarleiki umburðarlyndi þekking áhugi tillitssemi hreinskilni
 sveigjanleiki framsvýni vandvirkni
 skilningur áráðni sjálstraust þolinmæði hnitmiðaður tengsl hnitlagi
hugmyndaauði
 ferlar hlusta áhætta viðsýni kraftur árvekni aðlögun
 liðsheild virðing opinn virkni jákvæðni góðvild
 gagnrýni rákstaðningur flæði samstarfsvilji kurteisi ákvarðanataka gleði
 málefnalegt samstarfsvilji einbeiting árangur fordómaleysi