

ANNUAL REPORT 2013

(Short version)



NATIONAL AND UNIVERSITY LIBRARY OF ICELAND



Staff forming the new policy 29th of January 2013.

National and University Library of Iceland: ANNUAL REPORT 2013.

Editor: Ingibjörg Steinunn Sverrisdóttir.

Layout: Erla Bjarnadóttir.

Cover illustration: A close up of Þjóðarbókhlaðan, the building of the National and University Library of Iceland.

Photographs: Helgi Bragason.



FOREWORD FROM THE NATIONAL LIBRARIAN



The National and University Library of Iceland's aim is to be a source of knowledge for everyone. It serves the Icelandic community in all areas of reference and academic discipline and plays a leading role in the collection, preservation and dissemination of information, thus making a vigorous contribution to culture, research and creative work.

Budget cuts and constraints continued in the Library's operations, and the total cut, as in recent years, is around 25%. During this period acquisition prices went up, mainly because of the low rate of the Icelandic króna. The largest purchase items were for The Iceland Consortium for Electronic Subscriptions (ICES) as in recent years.

Operational expenses were streamlined and cut but the operating balance for the year 2013 was negative by 19 m. kr. The difference was financed by the Library's funds. Vacant positions have not been filled except where strictly necessary and staffing positions (FTE's) were negative by 0.6 compared to last year. At the end of the year, two positions were vacant. Travel, training and conferences were minimal. Special revenue was higher than predicted.

Among milestones and big projects was the forming of a new policy for the years 2013-2017, under the same headline as previous policy: *Access to Knowledge for Everyone*. Many people took part in the process, staff, cooperative partners and stakeholders. A new TEL partnership Agreement (The European Library) was formed, opening metadata from the Library in Europeana and licensing it with CCO 1.0 standard. The Library became an associated partner in the Europeana Newspaper Project in order to gain knowledge for the development of the website *timarit.is*. The Library became an International Standard Music Number (ISMN) agency for notated music. The Library became a member of EURIG (European RDA Interest Group) for implementing new cataloguing

rules. The Library received a copy of old Icelandic websites from Internet Archive and sent copies of digitized Icelandic books to the IA. A new edition of *vefsafn.is* was opened. Lykilskrá which is a register of authority names and subject headings from *Gegnir.is* was opened.

Katrín Jakobsdóttir, minister of Education and Culture, visited the deposit library in Reykholt on the 16th of March in connection with an opening of an exhibition about Snorri Sturluson in Reykholt. And a new minister of Education and Culture, Illugi Gunnarsson, visited the Library with his entourage on the 27th of August.

TARGET AGREEMENT

Under the performance targets agreed on in 2005 between the Library and the Ministry of Education and Culture, the main emphasis has been on the Library's role as an information provider. A revision of the performance targets has been discussed, but not carried out. The focus is on the Library's roles as a digital national library and a digital research library. Work was done on the following tasks under these headings during the year:

DIGITAL NATIONAL LIBRARY

Digitization of Icelandic materials

As no big grants for digitizing were obtained, the digitization unit in Akureyri was closed, but the work in Reykjavík continued. Several sponsored projects secured funding for digitization, mainly connected to the web *timarit.is*. The total number of digitized pages available on *timarit.is* at the end of the year was 4.5 million. All the pages have been OCR-read. Digitization and cataloguing of manuscripts continued on *handrit.is* and 1.153 manuscripts have been digitized, a total of 329.000 pages. At the end of the year 883 titles, a total of 289.000 pages, were accessible on *baekur.is*, and 771 maps from the years 1544-1951 were accessible on *islandskort.is*. Work on mobile and tablet interfaces for the websites is in progress. The main website, *landbokasafn.is* and *baekur.is* have the new features and can be viewed in different kind of devices.

Reception and harvesting of digital material

Icelandic websites are harvested on a regular basis into the Icelandic web archive, *vefsafn.is*. Copies of Icelandic websites from 1996-2004 from the

Internet Archive were also added, 47 million pages and 287 gigabytes. *Vefsafn.is* currently contains about 2.550 million documents. The quantity of data is 47 terabytes, with a back-up copy. At the end of the year about 45.000 URL's belonged to the .is domain.

The Library operates *Skemman.is*, an open-access repository for Icelandic universities, containing dissertations and staff research papers. It hosts nearly 16.000 works.

Rafhladan.is is a repository for the purpose of preserving Icelandic legal deposit materials that are born digital. The material is either collected by library staff or individuals; institutions or companies can deliver material over the web. It hosts around 3.500 entities. Little work was put into digital music but some digital material was received through the Center for Oral History. The emphasis was on cataloguing the acquisitions of the Center.

Leitir.is

The Library staff has been active in developing the *leitir.is*, which is a search portal operated by the Consortium of Icelandic Libraries. *Leitir.is* was opened in 2011 and gives information about books, audio-books, e-books, serials, articles, photographs, films, music, sound recordings, sheet music, reports and theses. Some of the items are available in digital format. The material comes from libraries and some other institutions. The aim is to include material from museums and archives.

DIGITAL RESEARCH LIBRARY

National Access

The Iceland Consortium for Electronic Subscriptions (ICES) is now a part of the NULI according to laws no. 142/2011. Contracts with publishers for the years 2013-2015 were finished. One of the main goals was to keep down annual price increases. Other goals were for example termination provisions and use of former contract forms. 3000 e-books in PDF-format were bought from Springer.

Icelandic universities use the SFX link solver and A-Z list to enhance access to the content of ICES and their own subscriptions. The subscription list of NULI is called *Finna timarit*. The majority of the content is also searchable in *leitir.is* which also offers the bX Recommender Service. All these systems are operated by Landskerfi bókasafna. Usage of the ICES subscriptions declined slightly. A group to examine and compare e-books from

Ebsco-Host and ProQuest was established and submitted a report in December.

Websites and Social Media

At the end of the year, seventeen webs were in operation but some of them are collaboration projects and have their own design. The web *openaccess.is* was closed but interested parties outside the Library opened the similar *opinn-adgangur.is*. The Saganet was closed and the content moved to *handrit.is* and *bækur.is*. Web measurements were taken up for *munlegsaga.is*. In an assessment conducted by the Ministry of the Interior, the main website of the Library was no. 12 of 105 websites of government institutions, with the rate 88 out of 100. Web traffic is monitored by Modernus and Google Analytics, giving different results. The usage is increasing.

The Library has a page on Facebook that is used to announce events and changes in Library operations and has more than 1500 friends connected to the page. Several units within the Library also have their own Facebook-pages, such as The Manuscript Collection, the Music and Film Collection, the National Collection, the Women's Archive, The Center for Oral History and ICES. The users of Uglan, the intranet of the University of Iceland, can add a Library Link to their personal pages, receive news from the Library and connect directly to e-resources.

Open Access

The rules issued by Rannís - The Icelandic Centre for Research, claiming that publishing of research funded by Rannís shall be in open access, came into force in January. Rannís referred scientists to *skemman.is* and *hirslan.is* as repositories. The Library participated in a seminar about OA in the University of Reykjavík on the 25th of October, but the goal was to inform about OA and stimulate discussions. The University of Iceland worked towards a policy on open access. At the end of the year the work was nearly finished.

This report gives an account of the main projects carried out over the year 2012 at the Library, with statistics reflecting performance, key figures covering operations and the main figures from the financial statements.

Ingibjörg Steinunn Sverrisdóttir
National Librarian

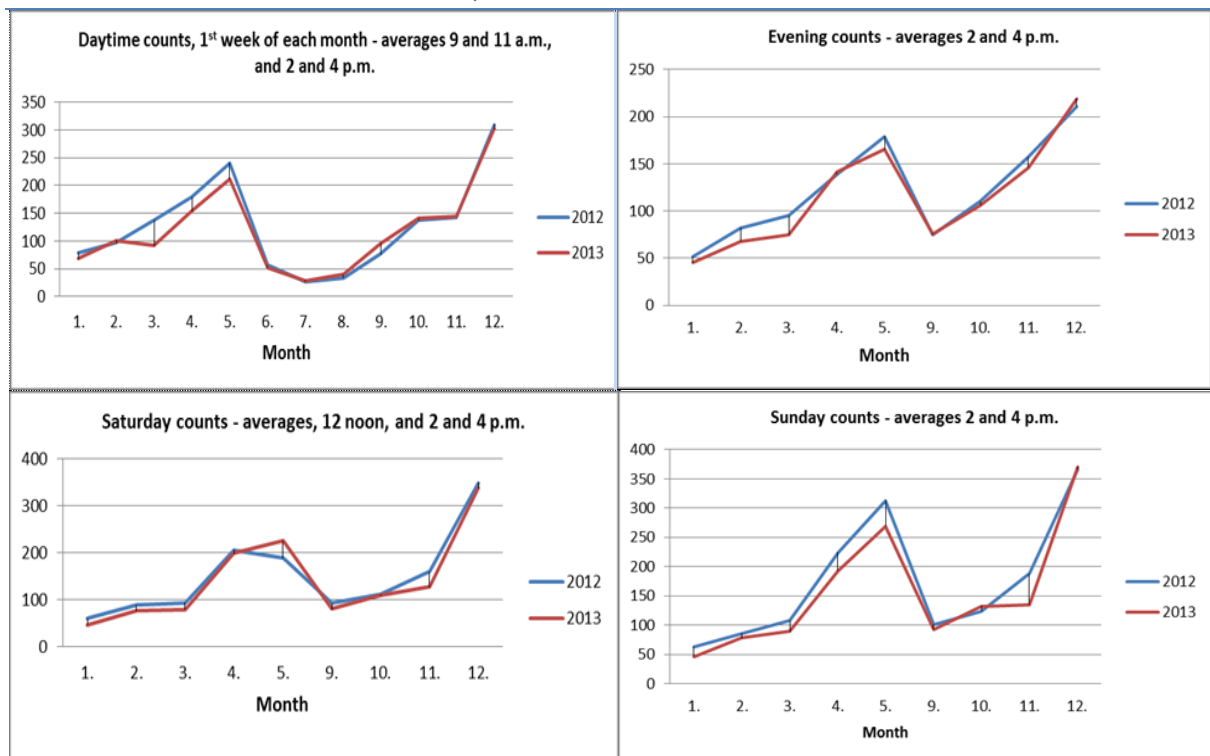
KEY STATISTICS

At the end of each year, statistics are processed covering users and the services provided, and also the Library's holdings, acquisitions and various aspects of its operations, such as the work of the Photographic Unit and the Bookbinding Unit, staffing levels and the Library's financial position. Some changes have been introduced to the presentation of these statistics, with the aim of simplifying them and bringing them into line with changes in operations.

USERS AND SERVICES

Library users include both those who visit the Library and those who make use of its websites. Guests using the Manuscript Department and National Department reading room are counted; precise counts of other users are not feasible, but surveys are made of users of the open areas on the 3rd and 4th floors in the first week of each month. On weekdays during the university examination season, their numbers can reach up to 350.

GUESTS USING 3RD AND 4TH FLOORS, 2012-2013



The Library Board 2013.

WEBSITE USAGE

	Users		Pages opened	
	2012	2013	2012	2013
timarit.is (Newspapers and journals)	660.438	717.324	7.043.093	6.590.156
skemman.is (Dissertations - research papers)	225.661	319.855	2.049.618	2.252.161
landsbokasafn.is (Main Library website)	83.691	79.869	381.335	323.448
hvar.is (ICES)	42.764	37.657	202.338	170.895
handrit.is (Manuscripts)	24.338	28.123	254.335	224.228
vefsafn.is (Archived web pages)	12.610	19.078	176.167	211.980
baekur.is (Books)	14.944	16.013	279.753	316.940
jonashallgrimsson.is (The poet Jónas H.)	10.114	14.777	36.922	50.736
islandskort.is (Antique maps of Iceland)	5.303	13.629	57.355	70.748
rafhladan.is (Born digital legal deposit)	6.807	9.058	34.589	80.233
kvennasogusafn.is (Women's history archive)	6.550	8.467	22.496	23.666
inngangur.landsbokasafn.is (Intranet)	4.902	5.508	116.736	132.278
utgafuskra.is (Icelandic national bibliography)	2.658	2.685	10.319	7.619
hask.landsbokasafn.hi.is (Cataloguers' handbook)	1.254	2.025	36.641	46.332
doktor.landsbokasafn.is (Doctoral theses)	2.727	1.346	27.872	21.419
sagas.landsbokasafn.is (Saga translations)	376	1.313	5.510	4.887
sagnanet.is (Medieval Icelandic manuscripts)	864	0	1.956	0
openaccess.is (info on open access)	609	0	2.118	0
munlegsaga.is (The Center for Oral History)		600		2.400
Total	1.106.610	1.277.327	10.739.153	10.533.126

The Saganet was closed in March 2012 but the material is accessible on *handrit.is* and *baekur.is*. The web *openaccess.is* was also closed because a similar web was opened by other parties, *opinnadgangur.is*. *Sagas.landsbokasafn.is* was opened in December 2012 and contains a bibliography of Saga translations. The web *munlegsaga.is* is new in web measures.

USE OF DIGITAL JOURNALS AND DATABASES

Articles downloaded:	2010	2011	2012	2013
via ICES ¹	907.294	1.128.802 ²	1.261.809	1.177.235
from Morgunblaðið. ³	2.004.420	2.942.890	2.598.155	2.009.862
via subscriptions of University of Iceland ⁴	33.778	70.381	90.513	110.030
Total	2.945.492	4.142.073	3.950.477	3.297.127

LIBRARY CARDS ISSUED

	2010	2011	2012	2013
Students at the University of Iceland	3.292	13.890 ⁵	13.311	13.720
University and Library staff	941	793	657	990
Other students	705	431	297	342
Other borrowers	941	1.174	930	681
Total	5.879	16.288	15.195	15.733

¹ Further information on the use of the national licences can be found in the annual report of the Icelandic Consortium for Electronic Subscriptions (ICES) on the website *hvar.is*.

² Counting for 2011 was revised and the usage numbers have changed from 1.096.540 to 1.128.802 downloaded articles.

³ The leap in the use of Morgunblaðið archive (material three years old and older) in 2010, is the result of linking to Google.

⁴ Figures on the use of the University's subscriptions cover only part of the databases, and statistics are not available for them all. The growth is partly because of better counting procedures.

⁵ In 2011 information of enrolled students at the University were automatically loaded into Gegnir. This saves a lot of work and time, but separation of active and inactive student users is not possible.

READING ROOM FOR MANUSCRIPT AND NATIONAL COLLECTIONS

Number of visitors	2010	2011	2012	2013
Males			3.718	2.925
Females			1.635	1.265
Total	7.350	7.150	5.353	4.190

RENT OF READING ROOMS

Number of months			2012	2013
Males			68	60
Females			249	237
Total			317	297

PRINTING AND COPYING BY LIBRARY USERS

Number of pages	2010	2011	2012	2013
Printed	210.799	669.873	338.067	217.577
Photocopied	373.435	242.711	175.372	183.127

CIRCULATION

	2010	2011	2012	2013
Circulation – main Library and departmental libraries in the University of Iceland				
Students at the University of Iceland	43.899	39.621	37.678	34.629
University and Library staff	8.448	7.495	6.671	2.006
Other students	3.240	3.054	2.920	5.990
Other borrowers	8.889	7.644	7.082	6.126
Total	64.476	57.814	54.351	48.751
National Collections materials used in the Reading Room	9.215	9.565	5.635	4.545
Manuscripts used in the Reading Room	3.189	3.684	2.780	2.342
Audio-visual Collection				
Sound recordings - loans	39	89	51	48
Films and related materials - loans	1.237	1.430	1.222	1.075
Digital materials - loans	55	52	35	28
Printed music - loans	93	86	125	163
Films and related materials used on site	210	235	254	252
Sound recordings used on site	194	183	168	160
Total	14.232	15.324	10.270	8.613
Total loans	78.708	73.138	64.621	57.364

INTER-LIBRARY LENDING AND ARTICLE SERVICES

Number of users				2013
Males				1.115
Females				1.432
Total				2.547

INTER-LIBRARY LENDING AND ARTICLE SERVICES

	2010	2011	2012	2013
To the Library				
Books, films etc.	1.367	1.345	1.178	1.157
Photocopies	1.031	1.197	1.170	917
From the Library				
Books, films etc.	573	523	440	391
Photocopies	706	566	312	517
Total	3.677	3.631	3.098	2.982
To the Manuscript Collections	71	38	24	3
From the Manuscript Collections	47	81	70	52
Total	118	119	94	55
Total Inter-library loans	3.795	3.750	3.194	3.037

REFERENCE SERVICES

	2010	2011	2012	2013
Number of users attending training courses				
Introductory courses for UI staff/students	1.386	767	996	1.027
Advanced courses for UI staff/students	991	989	736	841
Others	241	24	81	5
Total	2.618	1.780	1.813	1.873
Number of training courses				
Introductory courses for UI staff/students	34	29	46	42
Advanced courses for UI staff/students	48	54	47	23
Others	18	10	4	1
Total	100	93	97	66
Pamphlets				
New	5	4	7	12
Re-issued	20	23	23	22
Total	25	27	30	34
Enquiries handled	2010	2011	2012	2013
Reference				
By e-mail	467	544	566	479
By phone or in person	611	114	193	324
Extensive reference searches	28	25	47	47
Audio-visual Collections	25	18	15	36
National Collections	24	22	17	19
Women's history archive (visits and enquiries)	369	335	277	398
Center for Oral History			25	26
Total	1.524	1.058	1.140	1.329

COLLECTIONS AND FINANCIAL MANAGEMENT

ACQUISITIONS

Items received under legal deposit ⁶	2010	2011	2012	2013
Books (printed works registered as books)	6.156	6.458	5.260	5.306
Periodicals (individual issues)	6.916	6.579	6.943	5.539
Newspapers (individual issues)	4.003	6.226	7.125	5.944
Annual reports	719	579	444	396
Posters	224	334	268	99
Maps	99	49	11	18
Printed ephemera	7.552	6.372	8.026	6.240
Sound recordings ⁷	800	915	769	356
Video tapes and DVDs ⁸	107	93	60	29
Audio books	121	60	180	224
Multimedia discs/computer data	0	14	8	8
Digital items in Skemman	2.214	2.779	2.207	3.938
Digital items in Rafhlaðan	993	1.424 ⁹	56	2.105
Web archiving – documents (thousands)	2010	2011	2012	2013
The Icelandic web domain	208.744	266.623	285.703	277.228
Weekly selected archiving	95.630	75.503	98.171	132.168
Event-related collections	36.944	15.857	1.164	48.513
Collection from Internet Archive 1996-2004				47.000
Total documents (thousands)	341.318	357.983	385.038	504.909
Other acquisitions	2010	2011	2012	2013
Books, purchased	1.456	2.525	3.287	2.900
Books, donations/exchanges	4.210	6.532	3.574	3.224
Foreign periodicals, paid by Library	552	511	582	598
Foreign periodicals, paid by UI institutions	50	30	28	10
Foreign periodicals, donations/exchanges	400	310	300	230
Periodicals, back-numbers (volumes)	34	203	160	57
Icelandic periodicals, purchased	106	109	104	101
Icelandic periodicals, donated	53	50	40	25
Sound recordings, purchased	54	186	136	59
Sound recordings, donated	54	6	24	55
Video tapes and DVDs, purchased	175	300	319	95
Video tapes and DVDs, donated	236	145	36	20
Audio books	33	3	2	3
Acquisitions by Manuscript Collection	50	80	53	87
Acquisitions by Women's history archive	27	13	11	18
Acquisitions by Center for Oral History		14	28	23

⁶ Counting of the three copies of books, newspapers, audio discs and multimedia discs that are preserved in the Library; but two copies of printed ephemera and posters are counted. The figures for ephemera are estimates.

⁷ Counting of copies of published sound recordings preserved. Here also titles published by individuals, choirs and bands.

⁸ Titles.

⁹ Corrected number, but counting for 2011 was too high. Material in Rafhlaðan has also been weeded.

PHOTOGRAPHIC UNIT

	2010	2011	2012	2013
Digital images (pages)				
Newspapers and periodicals	302.258	357.740	316.188	163.275
Books	57.434	88.912	54.670	84.545
Manuscripts	109.877	41.644	21.097	15.974
Maps		20	939	190
Not published on the Library's websites			31.118	3.492
Total pages	469.569	488.316	424.012	267.466

BINDING SERVICES

	2010	2011	2012	2013
Units	48.226	48.587	43.275	44.066

ISSN AND ISBN

ISSN (International Standard Serial Number)	2010	2011	2012	2013
ISSNs assigned	39	23	25	46
ISBN (International Standard Book Number)				
Registrant element ranges assigned	66	69	88	56
Individual ISBNs assigned	180	194	214	228
ISMN¹⁰ (International Standard Music)				
Registrant element ranges assigned				6
Individual ISMNs assigned				4

AVERAGE FULL-TIME-EQUIVALENT STAFF PER UNIT¹¹

	2010	2011	2012	2013
Administration and IT		20.78	17.63	18.13
Acquisitions and cataloging		9.00	8.50	9.75
National collections and digital conversion		11.75	13.05	12.00
Communications and electronic access		19.20	17.32	18.00
Services and university relations		11.52	12.88	10.90
Total FTE's	76.55	72.25	69.38	68.78
Personnel by category FTE's	2010	2011	2012	2013
Qualified librarians	26.35	24.70	24.30	23.55
Librarians with university degrees	23.48	21.93	21.45	21.43
Other librarians	10.90	11.47	11.48	10.90
Assistants and office staff	7.92	6.25	3.00	4.00
Other staff	7.90	7.90	9.15	8.90
Total FTE's	76.55	72.25	69.38	68.78

¹⁰ The Library became an International Standard Music Number (ISMN) agency for notated music in 2013.

¹¹ A new organizational chart was taken into use January the 1st 2011 and former division into departments and units is therefore irrelevant.

OPERATING EXPENSES 2012 (ISK '000)

	2010	2011	2012	2013
Payroll	418.110	418.866	425.890	433.369
Acquisitions	292.795	266.583	297.469	307.702
Other expenses	269.631	229.736	241.158	236.704
Total	980.536	915.185	964.517	977.775
Percentage breakdown %	2010	2011	2012	2013
Payroll	42.7	45.8	44.2	44.3
Acquisitions	32.8	29.1	30.8	31.5
Other expenses	24.5	25.1	25.0	24.2

INCOME STATEMENT 2012 (ISK '000)

Income	2012	2013
University of Iceland's allocation for acquisitions	50.692	42.974
Fees for Icelandic Consortium for Electronic Subscriptions (ICES)	106.978	113.194
Other income	67.505	55.303
Government appropriation	730.088	747.176
Total	955.263	958.647
Expenses		
Payroll	425.890	433.369
Operation and maintenance of buildings	124.047	122.604
Purchase of acquisitions	73.173	71.703
Icelandic Consortium for Electronic Subscriptions (ICES)	224.296	235.999
Systems (Consortium of Icelandic Libraries. etc.)	23.887	23.794
Operation of computer systems and technical equipment	29.807	35.545
Other expenses	63.417	54.761
Total	964.517	977.775
Operating surplus	-9.254	-19.128



Staff forming the new policy 29th of January 2013.

vinna heiðarleiki umburðarlyndi þekking áhugi tillitssemi hreinskilni
 sveigjanleiki framsvýni vandvirkni
 skilningur áráðni sjálstraust þolinmæði hnitmiðaður tengsl huttlegni
 ferlar hlusta áhætta viðsýni kraftur árvekni aðlögun
 liðsheild virðing opinn virkni jákvæðni góðvild
 gagnrýni rákstaðningur flæði samstarfsvilji kurteisi ákvarðanatoka gleði
 málefnalegt einbeiting árangur fordómaleysi