

ANNUAL REPORT 2016

(Short version)



NATIONAL AND UNIVERSITY
LIBRARY OF ICELAND



Staff members celebrating the New Year.

National and University Library of Iceland: ANNUAL REPORT 2016.
ISSN 2298-8785.

Editor: Ingibjörg Steinunn Sverrisdóttir.

Layout: Oddfríður Steinunn Helgadóttir.

Cover photo: Taken in June 2016 when the aluminium shield covering the Library building was painted.

Photographs: Helgi Bragason, Ólafur J. Engilbertsson, Ragna Steinarsdóttir, Ingibjörg Bergmundsdóttir og Ingibjörg Steinunn Sverrisdóttir.



FOREWORD FROM THE NATIONAL LIBRARIAN



The National and University Library of Iceland's aim is to be a source of knowledge for everyone. It serves the Icelandic community in all areas of reference and academic discipline and plays a leading role in the collection, preservation and dissemination of information, thus making a vital contribution to culture, research and creative work.

The operational balance of the year 2016 ended in surplus. Due to many uncertainties a 25 m.kr. deficit was expected, but the year ended in a 3.7 m.kr. surplus, due to a favourable rate of the Icelandic króna and some extra funding.

Vacant positions were filled when necessary, which reduced staffing positions (FTE's) by 0.11. Travel, training and conferences were kept minimal. Maintenance on the red exterior shield of the Library building continued, and the second half of the painting work was completed. Installation of the new service desk on 2nd floor was finished and also facilities for the Writing Centres of the University of Iceland. Additional security cameras and monitors were installed and also extra equipment in the meeting rooms for staff. Management of computers and printers on 3rd and 4th floor was transferred to The University of Iceland Computing Services.

A new policy on open access and open science came into force in November. Implementation of the RDA cataloguing rules in the majority of Icelandic libraries finished in May. Other milestones completed was an exhibition covering the 200 years anniversary of the Icelandic Literary Society and two years lecture series about Icelandic book history that ended in the spring 2016. The repository *Opin vísindi* (Open Science) was opened and progress was made regarding a new CRIS system for Iceland.

The manuscript of *Passíusálmur* (Passion-hymns) by Hallgrímur Pétursson (JS 337 4to) was selected on Iceland's National Register for UNESCO's Memory of the World Programme. Collaboration started with the Theater Museum regarding preservation and cataloguing of books and manuscripts and an

agreement was made with the Ministry of Education and Saga Publishing about preservation and access to the texts of translations of the Icelandic Sagas to Danish, Norwegian and Swedish.

International Internet Preservation Consortia (IIPC) held its Annual meetings and Conference in the Library and at Hotel Saga in April and 150 specialists attended.

Málræktarsjóður provided a grant to translate part of the RDA rules into Icelandic and the websites *timarit.is* og *bækur.is* received an award from the Icelandic Language Committee.

The 170 anniversary of the Manuscript Collection was celebrated with an exhibition on 1st floor and also that 35 years had passed since the cornerstone of the Library building was laid.

TARGET AGREEMENT

New laws on public finances no. 123/2015 (LOF) came into effect. The operational budget for 2017 was processed according to the new laws, as well as policy planning for the next three years in collaboration with the Ministry of Education. The professional priorities for the next years will be: 1. Increase the number of visits and improve access to the websites of the Library, 2. Increase historical material on the websites of the Library, and 3. Improvements in buildings and security measures especially for legal deposit reserves. These priorities are in line with the policy of the Library, *Knowledge Source for Everyone*. Regarding operational priorities the focus will be on equal pay certification, green steps in government operations and improvement of records management.

In accordance with performance targets agreed on in 2005 between the Library and the Ministry of Education and Culture, the main emphasis has been on the Library's role as an information provider. The agreement will be replaced by priorities of LOF next year. The focus since 2005 has been on the Library's roles as a digital national library and a digital research library. Work was done on the following tasks under these headings during the year:

DIGITAL NATIONAL LIBRARY

Digitization of Icelandic materials

The website Hljóðsafn (Sound Archive) contained 28.142 sound recordings, both musical and oral, at the end of the year, but the main part is only accessible in the Library. The total number of digitized pages from journals and newspapers on *timarit.is* is

around 5.2 million. On the website *handrit.is*, more than 2000 digitized manuscripts are accessible, a total of 475.000 pages, and on the website *bækur.is* nearly 1.350 titles are accessible, a total of 420.000 pages. The Icelandic bibliography 1534-1844, was connected to *bækur.is*, thus linking detailed bibliographical records to each book. On *islandskort.is* 785 maps of Iceland from 1544-1951 are accessible in more than a thousand editions. Several funded projects were finished mainly connected to *timarit.is*.

Reception and harvesting of digital material

Icelandic websites are harvested on a regular basis and accessible at *vefsafn.is*. It currently contains about 3.650 million documents totalling 76 tera-bytes. At the end of the year about 58.000 URL's belonged to the .is domain.

Rafhladan.is is a repository for Icelandic born digital legal deposit material. It is either collected by library staff, or individuals, institutions or companies can deliver material. It hosts around 10.000 entities. Music for the Hljóðsafn is also collected.

Catalogues, bibliographies and databases

The Library participates actively in the development of *gegnir.is*, the library system for most libraries in Iceland, and *leitir.is* which is a discovery service for a broad range of resources. Part of the material is accessible in digital format. It comes from libraries and other sources, but material from museums is now being connected. The database Lykilskrá (Keywords) contains more than 11.000 standard keywords and 79.200 names and authority files. The website *einkaskjöl.is* that was opened in 2015 had more than 250 registrations of personal archives available at the end of the year, and the website, and *einkaskjalasafn.is* that is a collaborative catalog for Icelandic archives, had 5.500 records at the end of the year.

DIGITAL RESEARCH LIBRARY

National Access - ICES

A one-year contract was made for access to *EBSCOhost Premier*, *ProQuest Central*, *SAGE Premier* and *Morgunblaðið*. A new contract was made with Springer og Wiley for 2016-2018. A new contract was also made for *SCOPUS* for the years 2017-2021. The goal for ICES is to lower annual price increases and some progress has been made. Total usage of the ICES subscriptions was similar as last year, but database usage is falling.

All publishers except EBSCO have made an agreement with ExLibris to put their metadata in

Primo Central Index to make it available in *leitir.is*. As a result the usage of material from EBSCO has declined. Icelandic universities give access to their own subscriptions and subscriptions in ICES through the list *Finna timarit*, using the SFX link solver and A-Z list, from ExLibris but the metadata comes from Primo Central Index. The majority of the content is also searchable in *leitir.is* which also offers the bX Recommender Service.

Websites and Social Media

25 webs or web services were in operation but some are collaboration projects. Google Analytics is used to monitor web traffic. The average total usage shows 5.700 daily visits, delivering 27.000 pages to the users. Usage by smart devices is 24%, but varies between sites. *Áttavitinn* is a new service on the main website referring to search-aides, databases and information materials. 60 guides are available. The Library has a Facebook page for news and events with more than 2.540 followers, and also Twitter and Instagram accounts. Ten units of the Library have their own Facebook pages. The users of Uglan, the intranet of the University of Iceland, can add a Library Link to their personal page.

Open Access

A new policy for the Library on open access and open science was published and the University of Iceland's policy on open access to research and theses went into effect. The repository Opin vísindi was formally opened in september. All Icelandic Universities participate by registration of content and participation in project management.

The Library also operates Skemman, an Open Access repository for dissertations. It hosted more than 24.000 files at the end of the year. Other involvement in OA includes participation in SCOAP3 and Knowledge Unlatched but both projects aim for opening access to scientific material.

Current Research Information System (CRIS)

Work continued on the purchase of a CRIS system for Iceland, for registration of research financing and publications of Icelandic scientists, and tender documents were prepared in the Ministry of Education. The Library will supervise the registration of metadata and preservation of materials.

This report gives an account of main projects carried out over the year 2016, with statistics reflecting performance, operations and the main figures from the financial statements.

Ingibjörg Steinunn Sverrisdóttir
National Librarian

KEY STATISTICS

At the end of each year, statistics are processed covering users and the services provided, and also the Library's holdings, acquisitions and various aspects of its operations, such as the work of the Photographic Unit and the Bookbinding Unit, staffing levels and the Library's financial position. Some changes have been made to the presentation of these statistics, with the aim of simplifying them and bringing them into line with changes in operations. Last year, statistics were presented in regard to the standard *International Library Statistics, ISO 2789:2013*, and the work will continue in the years to come. Statistics of Library holdings are processed by Consortium of Icelandic Libraries from the library system Gegnir, and more emphasis is on analysis of statistics by gender.

1. NATIONAL LIBRARY – UNITS AND BRANCHES

The National and University Library of Iceland serves the Icelandic people, who counted 332.529 on January 1st 2016, but serves also other customers. It is also the library of the University of Iceland with 12.474 enrolled students in 2016.¹ The Library is one administrative unit, but operations and library holdings are in following locations:

The National and University Library, Arngrímsgata 3, in Reykjavík	1
Reserve Library in Reykholt, in Borgarfjörður	1
Legal deposit in Amtsbókasafnið, in Akureyri	1
Storage in Mjódd, in Reykjavík	1
Data storage at Verne Global, in Keflavík	1
Data storage at Advania Thor, in Hafnarfjörður	1
Branches and reading rooms in the University of Iceland	5
Total	11

2. SERVICES AND USE

Library users include both those who visit the Library and those who make use of its websites. Guests using the Manuscript Department and National Department reading room are counted; precise counts of other users are not feasible, but surveys are made of users of the open areas on the 3rd and 4th floors in the first week of each month. On weekdays during the university examination season, their numbers can reach up to 300.

2.2 REGISTERED USERS

	2013	2014	2015	2016
Students at the University of Iceland ²	13.720	12.887	12.707	12.474
University and library staff	990	416	373	400
Other students	342	290	304	271
Other borrowers	681	573	771	672
Total	15.733	14.166	14.155	13.817

¹ According to numbers from the library system Gegnir.

² Information of enrolled students at the University is automatically loaded into the library system Gegnir from the Student Registration. This saves a lot of work and time, but separation of active and inactive student users is not possible.

2.3 LENDING SERVICES

	2013	2014	2015	2016
Main Library and departmental libraries				
Students at the University of Iceland	34.629	31.892	27.001	23.331
University and library staff	2.006	5.967	6.010	4.621
Other students	5.990	1.920	1.711	1.168
Other borrowers	6.126	5.343	5.434	5.192
Renewals ³			57.098	50.791
Total	48.751	45.122	90.098	85.103
National collections - Reading Room	4.545	5.186	4.346	3.369
Manuscripts used in the Reading Room	2.342	2.346	2.102	2.795
Audio-visual collection				
Sound recordings - loans	48	41	64	31
Films and related materials - loans	1.075	776	621	397
Digital materials - loans	28	22	16	12
Printed music - loans	163	99	90	70
Sound recordings used on site	160	147	112	107
Films and related materials used on site	252	224	186	196
Total	8.613	8.841	7.537	6.977
Total loans	57.364	53.963	97.635	92.080

2.4 INTER-LIBRARY LENDING AND ARTICLE SERVICES

	2013	2014	2015	2016 ⁴
To the Library				
Books, films etc.	1.157	1.101	1.013	738
Photocopies	917	1.002	803	669
From the Library				
Books, films etc.	391	365	295	314
Photocopies	517	418	352	369
Total	2.982	2.886	2.463	2.090
To the Manuscript Collections	3	0	3	2
From the Manuscript Collections	52	27	62	36
Total	55	27	65	38
Total Inter-library loans	3.037	2.913	2.593	2.128

2.5 REFERENCE QUESTIONS – ENQUIRIES HANDLED

	2013	2014	2015	2016
Reference Services				
By e-mail	479	435	544	480
By phone or in person	324	214	162	142
Extensive reference searches	47	45	40	20
Quality control in Gegnir				276
Audio-visual Collections	36	27	31	25
National Collections	19	25	32	32
Women's history archive (visits and enquiries)	398	305	465	237
Center for Oral History	26	20	23	28
Total	1.329	1.071	1.297	1.240

³ Renewals are now more visible in statistics from Landskerfi bókasafna. Renewals can take considerable time and work, therefore the numbers are included. The number of renewals is higher than number of loans.

⁴ Decline in Inter-Library Loans this year is due to fewer requests (around 400). That can be traced to problems in a new request form taken into use in February. Despite feedback from users, the problem was not solved until December.

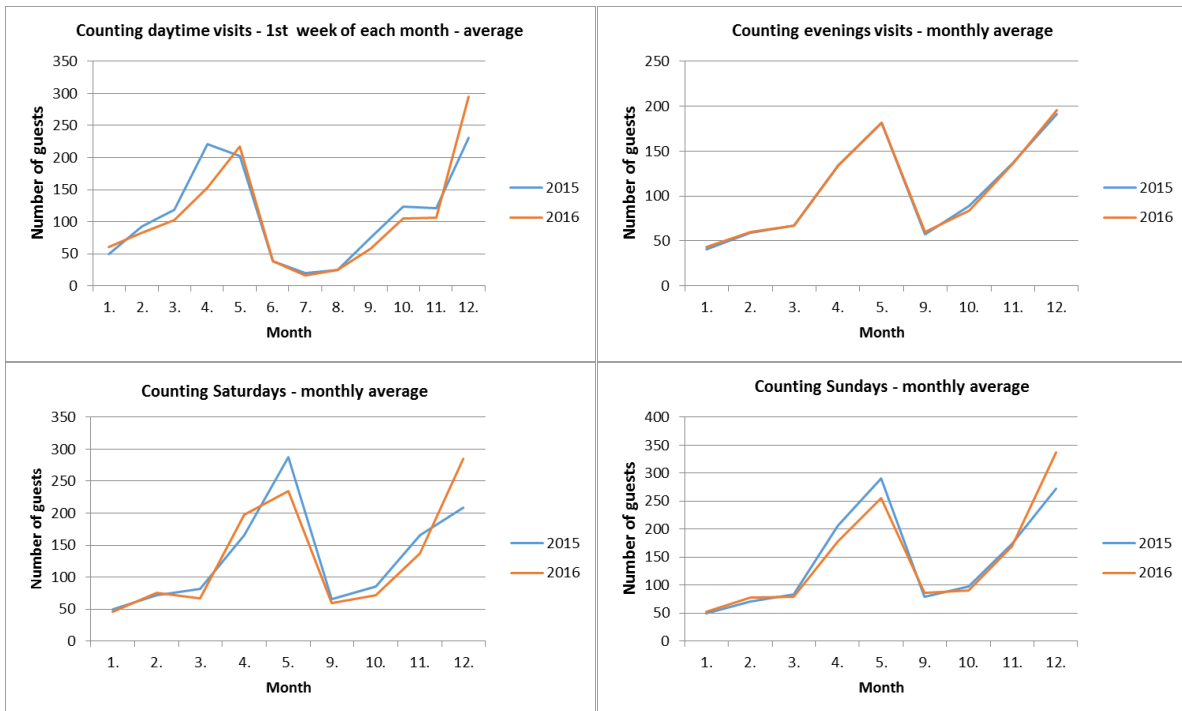
2.6 PRINTING AND PHOTOCOPYING BY LIBRARY USERS

Number of pages	2013	2014	2015	2016
Printed	217.577	102.050	127.670	117.347
Photocopied	183.127	70.499	73.575	41.936

2.9 EVENTS

	2013	2014	2015	2016
Exhibitions	11	11	13	12
Seminars			18	18
Total			31	30

2.10 GUESTS USING 3RD AND 4TH FLOORS, 2015-2016



2.10 READING ROOM FOR MANUSCRIPTS AND NATIONAL COLLECTIONS 1ST FLOOR

Guests	2013	2014	2015	2016
Total	4.190	3.977	3.580	3.422

2.10 RENT OF READING ROOMS (MONTHS)

Number of months	2013	2014	2015	2016
Total	297	298	312	312

2.11 USER ORIENTATION AND TRAINING

	2013	2014	2015	2016
Number of users attending training courses				
Introductory courses for UI staff/students	1.027	1.386	1.634	1.630
Advanced courses for UI staff/students	841	1.146	864	460
Others - Endnote 175	5	25	389	227
Total	1.873	2.557	2.887	2.317
Number of training courses				
Introductory courses for UI staff/students	42	38	45	54
Advanced courses for UI staff/students	23	39	28	23
Others - Endnote 7	1	2	18	9
Total	66	79	91	86
The number of new guides in Áttavitinn		20	19	22

2.12 USE OF ELECTRONIC RESOURCES AND SERVICES

	2013	2014	2015	2016
Via ICES ⁵	1.177.235	1.243.885	1.134.048	1.174.420
From Morgunblaðið.	2.009.862	1.771.220	1.610.026	1.688.948
Via subscriptions of University of Iceland ⁶	110.030	83.343	96.822	99.182
Total	3.297.127	3.098.448	2.840.896	2.962.550

2.13 VISITS TO WEBSITES

	Visits		Page views	
	2015	2016	2015	2016
timarit.is (Newspapers and journals)	1.011.043	1.116.298	5.841.677	5.690.951
skemman.is (Dissertations – research papers)	559.178	545.740	2.294.651	2.240.498
landsbokasafn.is (Main Library website)	110.648	104.169	262.588	272.555
hvar.is (Landsaðgangur – ICES)	57.073	47.228	103.647	83.039
inngangur.landsbokasafn.is (Intranet)	55.409	47.909	149.817	115.871
vefsafn.is (Archived web pages)	54.292	44.960	264.686	256.258
handrit.is (Manuscripts)	51.667	59.979	271.527	298.447
baekur.is (Books)	29.198	33.568	359.479	418.862
rafhladan.is (Born digital legal deposit)	21.922	21.335	69.333	61.771
jonashallgrimsson.is (The poet and scholar JH.)	20.914	23.319	49.104	52.377
kvennasogusafn.is (Women's history archive)	15.442	13.149	30.607	25.672
islandskort.is (Antique maps of Iceland)	12.659	14.188	49.390	53.319
hask.landsbokasafn.is (Cataloguers' handbook)	9.240	11.938	60.915	99.890
einkaskjol.is (Private archives)	5.091	5.370	30.411	27.129
Áttavitinn (Study guides)		11.453		58.635
utgafuskra.is (Icelandic national bibliography)	4.313	3.923	8.507	7.432
Opinvisindi.is (Repository for research articles)		3.825		27.007
Lykilskra.landsbokasafn.is (Keywords)	3.922	5.514	19.535	22.807
sagas.landsbokasafn.is (Saga translations)	2.740	2.515	7.863	8.948
munlegsaga.is (The Center for Oral History)	2.482	1.445	7.073	4.791
hljodsafn.landsbokasafn.is (Sound archive)	1.808	2.679	29.109	30.565
konurogstjornmal.is (Women and politics)	1.806	5.113	4.553	12.011
doktor.landsbokasafn.is (Icelandic PhD's)	1.342	1.952	12.526	11.921
bokaskra.landsbokasafn.is (Icelandic bibliogr.)	1.319	706	8.018	3.344
jonarnason.is (The librarian and scholar JA)		274		763
hallgrimurpetursson.is (The priest and poet HP)		104		198
Total 26 websites	2.033.508	2.077.760	9.935.016	9.769.190

⁵ Further information on the use of the national licences can be found in the annual report of ICES on the website *hvar.is*.

⁶ It is difficult to get reliable figures on the use of some of the University's subscriptions and the data is unstable. A list of the subscriptions is on page 38 in the Icelandic version of the Annual Report.

2.15 SOCIAL MEDIA

	2013	2014	2015	2016
Social media – number of entries				
Facebook - National and University Library		124	218	227
Facebook - Manuscript Collections		54	75	51
Facebook - National Collections		4	25	27
Facebook - Music and Film Collections		12	8	16
Facebook - Women's Archives		58	48	68
Facebook - Center for Oral History		3	13	1
Facebook - ICES		119	78	101
Facebook - timarit.is		123	600	599
Facebook - Women and politics			97	49
Facebook - Jónas Hallgrímsson			5	4
Facebook - bækur.is		18	174	186
Instagram - National and University Library			64	147
Twitter - National and University Library		420	1.246	1.838
Total		935	2.651	3.314

3. COLLECTIONS

3.2 NUMBER OF COPIES BY FORMAT 2016 – PROCESSED FROM GEGNIR⁷

Efnistegund	Manu- scripts	NULI	National collect.	Branch Lögberg	Branch VR II	Research Centres	Total 2016	Total 2015
Blu-ray		241	47				288	249
Book	2.160	445.688	311.618	11.076	2.102	6.712	779.356	772.853
Datasets		18	17				35	33
CD		582	13.814	3	4		14.403	14.016
CD / audio book		506	1.798				2.304	2.156
Manuscript	16.607			1			16.608	16.532
LP		5	5.351				5.356	5.200
LP / audio book		2	149				151	154
Bound journals	17	3.397	7.689	86			11.189	10.751
Maps		47	1.433				1.480	1.427
Folder		1					1	1
MP3 / audio book		9	339				348	314
Video		1.615	686	1			2.301	2.257
DVD		3.399	1.209				4.608	4.326
Sheet music		4.254	4.276				8.530	8.415
Electronic journals		1					1	1
Slides		7	8				15	14
Cassettes		273	1.812				2.085	2.379
Cassette / audio book		150	1.164				1.314	1.010
Games		3	25				28	18
Journal issues	19	32.837	30.488	1.271			64.615	54.516
Devices		2	1				3	1
Computer data		866	417	7	1	2	1.293	1.264
Computer files			113				113	138
Total	18.803	493.903	382.454	12.445	2.107	6.714	916.462	898.025

⁷ New table with statistics from the Consortium of Icelandic Libraries (Landskerfi bókasafna) for 2015 and 2016.

3.2.1 STOCK BY UNITS – PROCESSED FROM GEGNIR

Total number of titles	2013	2014	2015	2016
Manuscript Collections	15.411	15.933	16.016	16.029
National and University Library	343.766	349.984	357.343	363.890
National Collections	158.305	162.385	165.466	168.273
Branch at Lögberg	9.026	9.184	9.295	9.423
Branch at Náttúrufræðihús	0	4	2	0
Branch at VR II	2.089	2.082	2.074	2.068
Research Centres of UI	5.454	5.443	5.443	5.438
Total	534.051	545.015	555.639	565.121
Total number of copies				
Manuscript Collections	18.134	18.716	18.792	18.803
National and University Library	469.036	477.558	485.884	493.939
National Collections	353.637	364.111	372.156	382.454
Branch at Lögberg	11.966	12.034	12.360	12.445
Branch at Náttúrufræðihús	0	4	2	0
Branch at VR II	2.129	2.122	2.113	2.107
Research Centres of UI	6.724	6.724	6.718	6.714
Total	861.469	881.005	898.025	916.462



Guest study Snorri Hjartarson's poems.

3.2.2 ACQUISITIONS

Items received under legal deposit ⁸	2013	2014	2015	2016
Books (printed works registered as books) ⁹	5.306	7.463	5.863	4.934
Periodicals (individual issues)	5.539	5.216	5.582	4.864
Newspapers (individual issues)	5.944	6.516	6.172	6.917
Annual reports	396	173	325	300
Posters	99	56	177	142
Maps	18	17	24	16
Printed ephemera (units)	6.240	8.726	8.666	10.342
Sound recordings ¹⁰	356	544	543	286
Video tapes and DVDs ¹¹	29	54	41	60
Audio books	224	217	66	71
Sheet music				11
Multimedia discs/computer data	8	28	0	0
Digital items in Skemman	3.938	3.186	3.156	3.028
Digital items in Rafhlaðan	2.105	3.781	1.923	1.869
Digital items in Opin vísindi				51
Digital items in Hljóðsafn ¹²		10.000	7.869	10.273
Web archiving – documents (thousands)	2013	2014	2015	2016
The Icelandic web domain	277.228	295.721	284.525	226.907
Weekly selected archiving	132.168	132.877	102.371	105.164
Event-related collections	48.513	1.572	2.258	3.816
Collection from Internet Archive 1996-2004	47.000	0	0	0
Total documents (thousands)	504.909	430.170	389.154	335.887
Other acquisitions	2013	2014	2015	2016
Books, purchased	2.900			
Books - Services and University relations		831	640	406
Books - National Collections		495	288	355
Books - University of Iceland		1.205	993	1.037
Books, donations/exchanges	3.224	5.501	3.467	4.430
Foreign periodicals, paid by NULI and UI	598	600	590	
Foreign periodicals, paid by NULI				331
Foreign periodicals, paid by UI				255
Foreign periodicals, paid by UI institutions	10	7	7	2
Foreign periodicals, donations/exchanges	230	220	170	185
Periodicals, donations of back-numbers (volumes)	57	131	207	137
Icelandic periodicals, purchased	101	111	113	115
Icelandic periodicals, donated	25	25	25	23
Sound recordings - purchased National Collection	59	159	80	169
Sound recordings, donated	55	51	143	47
Video tapes and DVDs, purchased	95	48		
DVDs - NULI Services and University relations			48	55
DVDs - NULI National Collections			18	27
DVDs - University of Iceland			40	33
Video tapes and DVDs, donations	20	105	275	164
Audio books, donations	3	17	7	7
Sheet music, donations				128
Annual reports, donations				9
Databases for NULI, UI and others ¹³		30	28	27

⁸ Counting of the three copies of books, newspapers, audio discs and multimedia discs that are preserved in the Library; but two copies of printed ephemera and posters are counted. The figures for ephemera are estimates.

⁹ Number of registered copies in the National Collections 2016 is based on statistics from Consortium of Icelandic Libraries.

¹⁰ Counting of copies of published sound recordings preserved. Here also titles published by individuals, choirs and bands.

¹¹ Titles.

¹² Hljóðsafn (Sound Archive) was opened December 1st 2014 and a number of sound files were already in the collection.

¹³ NULI paid for or took part in purchasing 11 databases and schools / faculties of the University of Iceland for 26 databases.

Acquisitions by Manuscript Collection	87	74	81	72
Acquisitions by Women's history archive	18	10	22	16
Acquisitions by Center for Oral History	23	9	11	8

3.2.3 WITHDRAWALS – PROCESSED FROM GEGNIR¹⁴

Total withdrawn copies	2013	2014	2015	2016
Manuscript Collections	73	45	25	168
National and University Library	11.313	12.143	9.301	9.630
National Collections	2.450	1.716	2.077	2.328
Branch at Lögberg	246	596	193	397
Branch at Náttúrufræðihús	106	0	0	0
Branch at VR II	217	3	3	2
Research Centres of UI	23	36	13	7
Total	14.428	14.539	11.599	12.532

4. ACCESS AND FACILITIES

Wintertime - opening hours pr. week	80
Summertime - opening hours pr. week	40-44
Exams time - longer opening hours for six weeks pr. year	86
Days open	320
User places - seats	700
Reading rooms for individuals	26
Work rooms for groups or meetings	4
Tables for group work	17
Public access workstations – computers and kiosk services	20
Catalogue records - Gagnir	1.187.054
Number of copies - Gagnir	5.914.538
Photocopiers, printers and scanners	17
Space in squaremetres	
- National and University Library Building	13.000
- Reykholt	851.4
- Storage in Mjódd	428

5. MANAGEMENT

5.3 PUBLICATIONS

	2013	2014	2015	2016
Promotional material				
New leaflets	12	0	0	0
Re-issued leaflets	22	20	7	1
Guidelines in Áttavitinn	0	20	19	22
Exhibition catalogs		4	4	3
Collaboratives - Utangarðs and Sjónarhorn			2	0
Brochures		1	2	4
Report – Innleiðing RDA skráningarreglnanna			1	1
Total	34	40	35	31

5.4 CONSERVATION AND BINDING SERVICES

	2013	2014	2015	2016
Units	44.066	48.498	44.315	45.497

¹⁴ New table with statistics from the Consortium of Icelandic Libraries (Landskerfi bókasafna).

5.5 DIGITIZATION

Printed material	2013	2014	2015	2016
Newspapers and periodicals	163.275	154.065	104.002	139.775
Books	84.545	17.759	67.731	43.929
Manuscripts	15.974	30.247	38.240	17.824
Maps	190	0	0	0
Not published on the Library's websites	3.492	2.300	0	0
Albums and covers for the Sound Archive		2.091	4.631	3.687
Private Archives			198	268
For Rafhlaðan			95	326
Total pages	267.466	206.462	214.897	205.861
Sound material (sound files)				
Music			17.491	10.262
Interviews			378	11
Total sound files			17.869	10.273

5.6 ISSN AND ISBN

ISSN (International Standard Serial Number)	2013	2014	2015	2016
ISSNs assigned	46	117	112	116
ISBN (International Standard Book Number)				
Registrant element ranges assigned	56	71	70	70
Individual ISBNs assigned	228	220	207	204
ISMN (International Standard Music Number)				
Registrant element ranges assigned	6	6	3	2
Individual ISMNs assigned	4	4	3	3

6. FUNDING AND EXPENDITURE

6.2 OPERATING EXPENSES (ISK '000)

	2013	2014	2015	2016
Payroll	433.369	479.552	528.066	567.205
Acquisitions	307.702	292.008	302.841	292.046
Other expenses	236.704	247.473	271.666	274.867
Total	977.775	1.019.0	1.102.5	1.134.1
Percentage breakdown %	2013	2014	2015	2016
Payroll	44.3	47.1	47.9	50.0
Acquisitions	31.5	28.7	27.5	25.8
Other expenses	24.2	24.2	24.6	24.2

6.3 INCOME STATEMENT (ISK '000)

Income	2014	2015	2016
University of Iceland's allocation for acquisitions	42.310	40.349	40.223
Fees for Icelandic Consortium for Electronic Subscriptions (ICES)	118.166	122.114	125.069
Other income	67.523	71.227	72.318
Government appropriation	811.623	860.600	900.200
Total	1.039.622	1.094.290	1.137.810

Expenses			
Payroll	479.552	528.066	567.205
Operation and maintenance of buildings	128.852	144.705	144.106
Purchase of acquisitions	69.558	72.379	71.320
Icelandic Consortium for Electronic Subscriptions (ICES)	222.450	230.462	220.726
Systems (Consortium of Icelandic Libraries. etc.)	23.443	28.181	27.216
Operation of computer systems and technical equipment	35.060	34.189	38.741
Other expenses	60.118	64.591	64.804
Total	1.019.033	1.102.573	1.134.118
Operating surplus	20.589	- 8.283	3.692

7. LIBRARY STAFF

7.2 AVERAGE FULL-TIME-EQUIVALENT STAFF PER UNIT

Average full-time equivalent staff per unit	2013	2014	2015	2016
Acquisitions and cataloging	18.13	19.13	21.25	20.50
Communications and electronic access	9.75	9.20	0	0
Administration and IT	12.00	12.25	13.25	13.25
National collections and digital conversion	18.00	18.15	17.55	17.60
Services and university relations	10.90	11.70	18.11	18.70
Total FTE's	68.78	70.43	70.16	70.05
Personnel by category FTE's				
Qualified librarians	23.55	26.15	27.10	27.30
Librarians with university degrees	21.43	19.43	17.30	18.80
Other librarians	10.90	11.70	12.61	12.35
Assistants and office staff	4.00	3.25	3.25	2.25
Other staff	8.90	9.90	9.90	9.35
Total FTE's	68.78	70.43	70.16	70.05



Future scholars.

GENDER ANALYSIS¹⁵

	2013	2014	2015	2016
Library staff				
Males	31	29	31	32
Females	44	51	47	46
Total	75	80	78	78
Library staff – FTE's				
Males				28.00
Females				42.05
Total				70.05
Registered borrowers				
Males			4.893	4.707
Females			9.121	8.940
Unspecified, institutions, companies			138	170
Total			14.152	13.817
Interlibrary lending and article services				
Males	1.115	930	986	863
Females	1.432	1.185	1.129	989
Unspecified, institutions, companies	435	771	348	238
Total	2.982	2.886	2.463	2.340
Guests in reading room on 1st floor				
Males	2.925	2.703	2.444	2.338
Females	1.265	1.274	1.136	1.084
Total	4.190	3.977	3.580	3.422
Rent of reading rooms (months)				
Males	60	71	94	69
Females	237	227	218	243
Total	297	298	312	312
Topics of exhibitions				
Males			5	5
Females			2	1
Unspecified, things, institutions, etc.			6	6
Total			13	12
Lecturers at seminars				
Males			17	20
Females			10	23
Total			27	43
Highlight of the month on Libray website				
Males			7	4
Females			5	5
Unspecified, things, institutions, etc.			0	3
Total			12	12

¹⁵ More emphasis is on analysis of statistics by gender.



Library staff in Library T-shirts on Library day in 2016.

NATIONAL AND UNIVERSITY
LIBRARY OF ICELAND