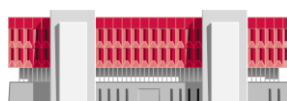


ANNUAL REPORT
2011
(Short version)



NATIONAL AND UNIVERSITY
LIBRARY OF ICELAND



Preparations for the opening of the exhibition *Lífsverk*.

National and University Library of Iceland: ANNUAL REPORT 2011.

Editor: Ingibjörg Steinunn Sverrisdóttir.

Layout: Erla Bjarnadóttir.

Cover illustration: Part of the art work *The Human Spirit: Past – Present – Future*. Stained glass window by Leifur Breiðfjörð, created for the inauguration of the National and University Library of Iceland in 1994.

Other photographs in the report were taken on various occasions by the staff of the Library's photographic unit.



FOREWORD FROM THE NATIONAL LIBRARIAN



THE NATIONAL AND UNIVERSITY LIBRARY OF ICELAND'S aim is to be a source of knowledge for everyone. It serves the Icelandic community in all areas of reference and academic discipline and plays a leading role in the collection, preservation and dissemination of information, thus making a vigorous contribution to culture, research and creative work.

In the year 2011 budget cuts and constraints continued in the Library's operations. The budget allocation was cut by 10% which makes the total cut since 2008 around 20%. During this period all acquisition prices went up, but the largest purchase items were for The Icelandic Consortium for Electronic Subscriptions (ICES).

Despite continued streamlining and cuts in operational expenses the operating balance for the year 2011 was negative by 14.7 m. kr. The difference was financed by the Library's funds. Vacant positions have not been filled except where strictly necessary, which reduced staffing positions (FTE's) by 4.3 and four persons. Staff computers were renewed, as well as some technical equipment and several necessary maintenance tasks that had not been planned were also carried out. The Library received more grants and payments for digitization than planned resulting in higher revenue.

Some big projects that had been in progress for some years were completed. New statutes no. 142/2011 for the Library were passed by Althingi in September. To celebrate the 200th anniversary of the national hero Jón Sigurðsson, the exhibition *A Life's Work – the Private Life, Scientific Achievements and Political Career* was opened on April 20th. At the same time digital copies of his works were made available online, with a bibliography of his manuscripts, writings and private letters. On November 11th the tenth anniversary of Landskerfi bókasafna (Consortium of Icelandic Libraries), a

new search portal *leitir.is* was opened. It searches the national library system Gegnir and digitized and digital material from the NULI and other libraries, as well as the national licenses purchased by The Icelandic Consortium for Electronic Subscriptions (ICES).

TARGET AGREEMENT

Under the performance targets agreed on in 2005 between the Library and the Ministry of Education, Science and Culture, the main emphasis has been on the Library's role as an information provider. A revision of the performance targets has been discussed, but not carried out. The focus is on the Library's roles as a digital national library and a digital research library. Work was done on the following tasks under these headings during the year:

DIGITAL NATIONAL LIBRARY

Digitization of Icelandic materials

Several sponsored projects secured some funding for digitization but no big grants were received. As a result, the digitization unit in Akureyri was closed in the autumn. The total number of digitized pages available on the web *timarit.is* at the end of the year was 3.8 million. Nearly all the pages have been scanned (OCR-read) which makes textual searches possible. Development of the website *handrit.is* and digitization of manuscripts continued. Nearly 1200 manuscripts have been digitized, a total of 300.000 pages. The website *baekur.is* was opened in 2010. At the end of the year 300 titles, the total of 145.000 pages, were accessible.

Reception and harvesting of Icelandic digital material

The Icelandic web archive, *vefsafn.is*, was opened in 2009 and Icelandic websites are harvested on a regular basis. A copy of the web archive is hosted outside the Library, at Advania. It currently contains about 1730 million documents. At the end of the year about 35.000 URL's belonged to the .is domain. The quantity of data is 32 terabytes, with a back-up copy.

The Library operates *Skemman*, an open-access repository for universities, containing dissertations and staff research papers. *Skemman* is hosted in a DSpace repository, which is open source software. The project is a collaborative venture between the universities and the University of Hólar was the last

to join at the end of the year. It hosts nearly 10.000 works by more than 10.000 authors.

Rafhladan.is is another DSpace repository that was set up at the end of 2009 for the purpose of preserving Icelandic legal deposit materials that are born digital, such as newspapers, e-journals, reports etc. The material is now collected by library staff or individuals; institutions or companies can deliver material through their own access. The repository was opened to the public in 2011. It hosts around 2000 entities.

There was not much progress in digitizing music but digital material was received through the Center for Oral History. The biggest collection is a digital copy of recordings from the Historical Society of West-Húnavatnssýsla for 1977-1990. This collection was digitized in collaboration with the Research Center of University of Iceland in Skagaströnd and other partners.

DIGITAL RESEARCH LIBRARY

National Access

In the year 2011 extra funding secured the operations of The Icelandic Consortium for Electronic Subscriptions (ICES). The project is now operated by NULI in accordance to the new law no. 142/2011 and will receive a part of the funding from the state. But future financing and the organization of the project must be reviewed. The SFX link solver and A-Z list have been used for ICES and the electronic subscriptions of Icelandic universities since 2009 and give access to electronic subscriptions. In connection with SFX the bX Recommender Service was implemented. The subscriptions were activated in Primo Central Index (PCI) and made searchable and accessible through *leitir.is*. A new version of the web *hvar.is* was opened at the end of the year. Usage of the ICES subscriptions is constantly growing but not to the same degree as in the beginning.

The Library's websites

A review of the Library's websites is in progress in order to enhance access to library material and information of the services. The web content management system CMS Made Simple has been in use since 2008 and revision aimed at harmonizing the design, interactivity and facilitating easier navigation between the websites is ongoing. The review takes account of the priorities identified in a survey of webs in Icelandic public institutions by the company Sjá ehf, and applies the WCAG 2.0 (Web Content Accessibility

Guidelines) regarding access by people with disabilities and impaired vision. At the end of the year, seventeen webs were operated but some of them are collaboration projects and have their own design. The content of the web about the poet Jónas Hallgrímsson was moved to the CMS without any changes in the design. In December *hvar.is* was totally redesigned and moved to CMS. The Primo search engine from *leitir.is* is now on the first page. All the webs, other than webs containing digitized material, are now in the same management system, making web management and system administration easier. A new security application was taken into use in order to minimize the threat of hacking. A new interface for staff was implemented for the doctoral theses web.

The Library has a page on Facebook that is used to announce events and changes in Library operations and has more than 1000 friends connected to the page. The Manuscript Collection also has a Facebook-page. The Music and film collection operates a MySpace-page for the purpose of collecting new material and in order to be in touch with Icelandic musicians that publish their works on the Internet. The users of Uglan, the intranet of the University of Iceland, can add a Library Link to their personal pages, receive news from the Library and connect directly to e-resources. The link was updated.

Open Access

Nordbib, a funding programme for research and development in the area of Open Access to scholarly and scientific information at a Nordic level was extended, but it is planned to end in June 2012. The web *openaccess.is*, is an information site about OA. The aim is to introduce and provide information about open access. An interest group has also opened a page on Facebook. The Collaborative Committee of the University of Iceland and NULI prepared an establishment of a committee to formulate a policy for the University on open access as stated in the University policy. The committee was formally appointed in November.

This report gives an account of the main projects carried out over the year 2011 at the Library, with statistics reflecting performance, key figures covering operations and the main figures from the financial statements.

Ingibjörg Steinunn Sverrisdóttir
National Librarian

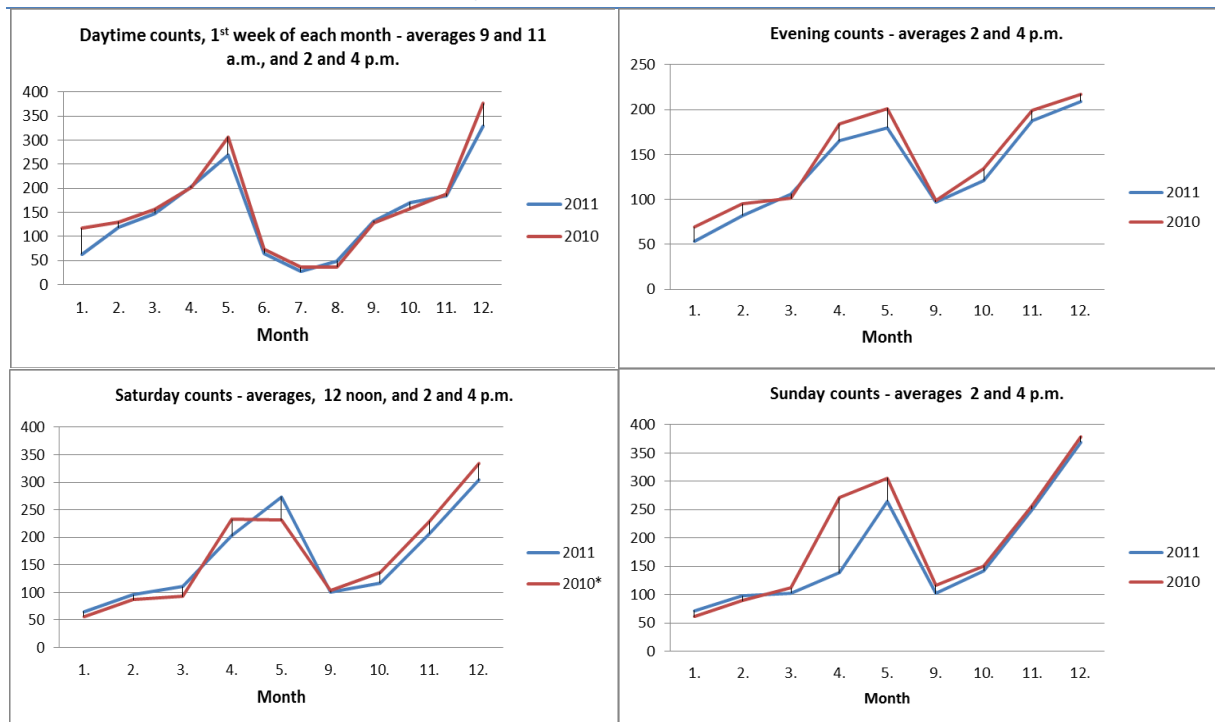
KEY STATISTICS

At the end of each year, statistics are processed covering the number of Library users and the services provided, and also the Library's holdings, acquisitions and various aspects of its operations, such as the work of the Photographic Unit and the Bookbinding Room, staffing levels and the Library's financial position. Some changes have been introduced to the presentation of these statistics, with the aim of simplifying them and bringing them into line with changes in operations.

USERS AND SERVICES

Library users include both those who visit the Library and those who make use of its websites. Guests using the Manuscript Department and National Department reading room are counted; precise counts of other users are not feasible, but surveys are made of users of the open access areas on the 3rd and 4th floors in the first week of each month. On weekdays during the university examination season, their numbers can reach up to 350.

GUESTS USING 3RD AND 4TH FLOORS, 2010-2011



WEBSITE USAGE

	Users		Pages opened	
	2010	2011	2010	2011
timarit.is (Newspapers and journals)	412.777	610.785	7.128.572	7.657.533
skemman.is (Dissertations - research papers)	133.149	187.576	1.433.196	1.762.738
landsbokasafn.is (Main Library website)	119.115	96.138	508.196	422.115
handrit.is (Manuscripts)	19.438	22.205	200.199	212.213
doktor.landsbokasafn.is (Doctoral theses)	14.752	9.676	42.345	28.059
islandskort.is (Antique maps of Iceland)	12.511	5.946	88.762	58.804
vefsafn.is (Archived web pages)	9.509	10.093	121.924	129.416
utgafuskra.is (Icelandic national bibliography)	8.421	4.275	18.328	13.804
jonashallgrimsson.is (The poet Jónas H.)	7.729	7.867	33.818	34.551
sagnanet.is (Medieval Icelandic manuscripts)	5.921	5.450	15.261	12.142
hask.landsbokasafn.hi.is (Cataloguers' handbook)	1.674	1.469	49.036	43.890
baekur.is (Books)	1.321	11.607	17.153	245.975
kvennasogusafn.is (Women's history archive)	1.262	4.622	5.671	16.4540
hvar.is (ICES)	59.830	50.480	261.870	199.508
rafhladan.is (Born digital legal deposit)		6.757		68.534
openaccess.is (info on Open Access)		818		2.041
Inngangur.landsbokasafn.is (Intranet)		333		8.185
Total	807.409	1.036.097	9.924.331	10.915.958

The total traffic on the webs has grown more than fourfold since 2007. The number of websites maintained by the Library has changed from 8 to 17. The increase in the traffic on *timarit.is* is considerable and the web is usually counted in the top 20 Icelandic websites each month. The traffic on *timarit.is* is about 60% of the total for the Library's websites.

USE OF DIGITAL JOURNALS AND DATABASES

Articles downloaded:	2008	2009	2010	2011
via ICES ¹	837.105	892.277	907.294	1.096.540
from Morgunblaðið. ²	625.525	667.546	2.004.420	2.942.890
via subscriptions of University of Iceland ³	18.300	18.682	33.778	70.381
Total	1.480.930	1.578.505	2.945.492	4.109.811

LIBRARY CARDS ISSUED

	2008	2009	2010	2011
Students at the University of Iceland	3.268	5.079	3.292	13.890 ⁴
University and Library staff	933	1.005	941	793
Other students	715	843	705	431
Other borrowers	963	1.087	941	1.174
Total	5.879	8.014	5.879	16.288

¹ Further information on the use of the national licences can be found in the annual report of the Icelandic Consortium for Electronic Subscriptions (ICES) on the website *hvar.is*.

² The leap in the use of Morgunblaðið archive (material three years old and older) in 2010, is the result of linking to Google.

³ Figures on the use of the University's subscriptions cover only part of the databases, and statistics are not available for them all. The growth is partly because of better counting procedures.

⁴ In 2011 information of enrolled students at the University were automatically loaded into Gegnir. This saves a lot of work and time, but separation of active and inactive student users is not possible.

READING ROOM FOR MANUSCRIPT AND NATIONAL COLLECTIONS

Visitors	2008	2009	2010	2011
Total	7.270	7.010	7.350	7.150

CIRCULATION

	2008	2009	2010	2011
Circulations – main Library and departmental libraries in University of Iceland				
Students at the University of Iceland	38.916	45.436	43.899	39.621
University and Library staff	8.095	8.505	8.448	7.495
Other students	4.212	5.025	3.240	3.054
Other borrowers	9.374	8.760	8.889	7.644
Total	60.597	67.729	64.476	57.814
National Collections materials used in the Reading Room	9.323	9.444	9.215	9.565
Manuscripts used in the Reading Room	3.344	3.868	3.189	3.684
Audio-visual Collection				
Sound recordings - loans	103	48	39	89
Films and related materials - loans	904	1.170	1.237	1.430
Digital materials - loans	121	56	55	52
Printed music - loans	244	100	93	86
Films and related materials used on site	312	257	210	235
Sound recordings used on site	280	174	194	183
Total	14.631	15.117	14.232	15.324
Total loans	75.228	82.846	78.708	73.138

INTER-LIBRARY LENDING

	2008	2009	2010	2011
To the Library				
Books, films etc.	1.062	1.237	1.367	1.345
Photocopies	1.388	1.130	1.031	1.197
From the Library				
Books, films etc.	662	652	573	523
Photocopies	888	914	706	566
Total	3.994	3.933	3.677	3.631
To the Manuscript Collections	20	24	71	38
From the Manuscript Collections	71	90	47	81
Total	91	114	118	119
Total Inter-library loans	4.085	4.021	3.795	3.750

PRINTING AND COPYING BY LIBRARY USERS

Number of pages	2008	2009	2010	2011
Printed	322.656	403.526	210.799	669.873
Photocopied	372.821	455.213	373.435	242.711

REFERENCE SERVICES

	2008	2009	2010	2011
Number of users attending training courses				
Introductory courses for UI staff/students	1.051	1.490	1.386	767
Advanced courses for UI staff/students	768	1.037	991	989
Others	195	159	241	24
Total	2.014	2.686	2.618	1.780
Number of training courses				
Introductory courses for UI staff/students	44	36	34	29
Advanced courses for UI staff/students	58	54	48	54
Others	11	17	18	10
Total	113	107	100	93
Pamphlets				
New	2	5	5	4
Re-issued	12	25	20	23
Total	14	30	25	27
Enquiries handled	2008	2009	2010	2011
Reference				
By e-mail	423	607	467	544
By phone or in person	91	214	611	114
Extensive reference searches	25	30	28	25
Audio-visual Collections	21	29	25	18
National Collections	42	32	24	22
Women's history archive (visits and enquiries)		232	369	335
Total	602	1.144	1.524	1.058



Guests at the opening of the exhibition *Lifsverk*.

COLLECTIONS AND FINANCIAL MANAGEMENT

ACQUISITIONS

Items received under legal deposit ⁵	2008	2009	2010	2011
Books (printed works registered as books)	7.794	7.349	6.156	6.458
Periodicals (individual issues)	8.626	8.598	6.916	6.579
Newspapers (individual issues)	7.602	5.592	4.003	6.226
Annual reports	580	630	719	579
Posters	583	456	224	334
Maps	77	68	99	49
Printed ephemera	9.560	9.000	7.552	6.372
Sound recordings ⁶	680	750	800	915
Video tapes and DVDs ⁷	72	72	107	93
Audio books	31	120	121	60
Multimedia discs/computer data	2	3	0	14
Digital items in Skemman		1.787	2.214	2.779
Digital items in Rafhlaðan			993	2.424
Web archiving – documents (thousands)	2008	2009	2010	2011
The Icelandic web domain	153.540	228.886	208.744	266.623
Weekly selected archiving	49.289	93.088	95.630	75.503
Event-related collections	0	36.658	36.944	15.857
Total documents (thousands)	202.829	358.632	341.318	357.983
Other acquisitions	2008	2009	2010	2011
Books, purchased	2.923	1.837	1.456	2.525
Books, donations/exchanges	3.534	3.829	4.210	6.532
Foreign periodicals, paid by Library	737	624	552	511
Foreign periodicals, paid by UI institutions	56	52	50	30
Foreign periodicals, donations/exchanges	550	500	400	310
Periodicals, back-numbers (volumes)	175	129	34	203
Icelandic periodicals, purchased	124	123	106	109
Icelandic periodicals, donated	45	47	53	50
Sound recordings, purchased	58	88	54	186
Sound recordings, donated	2	12	54	6
Video tapes and DVDs, purchased	264	291	175	300
Video tapes and DVDs, donated	122	21	236	145
Audio books			33	3
Acquisitions by Manuscript Collections	41	61	50	80
Acquisitions by Women's history archive			27	13

⁵ Counting of the three copies of books, newspapers, audio discs and multimedia discs that are preserved in the Library; but two copies of printed ephemera and posters are counted. The figures for ephemera are estimates.

⁶ In most cases three copies of each are received, one of which is preserved in the Akureyri Provincial Library (Amtsbókasafnið á Akureyri).

⁷ Titles.

PHOTOGRAPHIC UNIT

	2008	2009	2010	2011
Digital images (pages) ⁸				
Newspapers and periodicals	651.436	543.777	302.258	357.740
Books	4.136	7.807	57.434	88.912
Manuscripts	16.697	82.335	109.877	41.644
Maps				20
Total pages	672.269	633.919	469.569	488.316

BINDING SERVICES

	2008	2009	2010	2011
Units	42.908	54.865	48.226	48.587

ISSN AND ISBN

ISSN (International Standard Serial Numbers)	2008	2009	2010	2011
ISSNs assigned	41	41	39	23
ISBN (International Standard Book Numbers)				
Registrant element ranges assigned	74	63	66	69
Individual ISBNs assigned	178	113	180	194

AVERAGE FULL-TIME-EQUIVALENT STAFF PER UNIT⁹

	2008	2009	2010	2011
Administration and IT				20.78
Acquisitions and cataloging				9.00
National collections and digital conversion				11.75
Communications and electronic access				19.20
Services and university relations				11.52
Total FTE's	82.98	79.52	76.55	72.25
Personnel by category FTE's	2008	2009	2010	2011
Qualified librarians	30.05	25.60	26.35	24.70
Librarians with university degrees	22.00	27.23	23.48	21.93
Other librarians	14.01	10.87	10.90	11.47
Assistants and office staff	8.52	7.92	7.92	6.25
Other staff	8.40	7.90	7.90	7.90
Total FTE's	82.98	79.52	76.55	72.25

⁸ 150.748 pages were digitized in Akureyri and 337.588 pages in the Library in Reykjavík.

⁹ A new organizational chart was taken into use January the 1st 2011 and former division into departments and units is therefore irrelevant.

OPERATING EXPENSES 2011 (ISK '000)

	2008	2009	2010	2011
Payroll	407.999	404.475	418.110	418.866
Purchase of acquisitions	166.322	262.153	292.795	266.583
Other expenses	224.034	267.698	269.631	229.736
Total	798.355	934.326	980.536	915.185
Percentage breakdown %	2008	2009	2010	2011
Payroll	51.1	43.3	42.7	45.8
Purchase of acquisitions	20.8	28.1	32.8	29.1
Other expenses	28.1	28.6	24.5	25.1

INCOME STATEMENT 2011 (ISK '000)

Income	2010	2011
University of Iceland's allocation for acquisitions	53.429	48.074
Fees for Icelandic Consortium for Electronic Subscriptions (ICES)	107.734	107.706
Other income	163.378	127.141
Government appropriation	657.959	617.528
Total	982.500	900.449
Expenses		
Payroll	418.110	418.866
Operation and maintenance of buildings	119.007	111.354
Purchase of acquisitions	72.380	59.365
Icelandic Consortium for Electronic Subscriptions (ICES)	220.415	207.218
Systems (Consortium of Icelandic Libraries. etc.)	21.125	24.971
Operation of computer systems and technical equipment	23.039	28.396
Other expenses	106.460	65.015
Total	980.536	915.185
Operating surplus	1.964	-14.736



Guests at the Library.