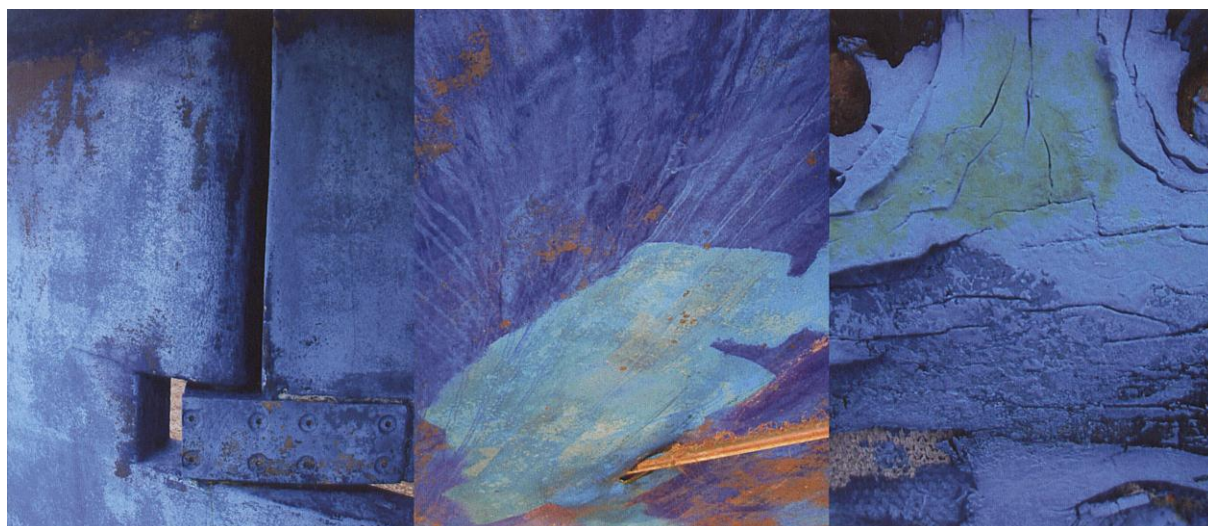


ANNUAL REPORT 2012

(Short version)



NATIONAL AND UNIVERSITY
LIBRARY OF ICELAND



Kammerkór Norðurlands with director Guðmundur Óli Gunnarsson, sang several songs to poems by Halldór Laxness on the Day of the Book, April 23rd. That day four exhibitions were opened in the Library and one of them was *Bernska skálds í byrjun aldar - Childhood of a Writer at the Turn of a Century*, dedicated to the 110 years anniversary of Halldór Laxness.

National and University Library of Iceland: ANNUAL REPORT 2012.

Editor: Ingibjörg Steinunn Sverrisdóttir.

Layout: Erla Bjarnadóttir.

Cover illustration: Photograph by the artist Jean Larson from Michigan USA, which she gave to the Library. The picture was a part of the exhibition *Eylanduhugsanir - Musings* 15. sept- 20. nóv.

Other photographs in the report were taken at exhibitions by Helgi Bragason, head of the Photographic Unit.



FOREWORD FROM THE NATIONAL LIBRARIAN



The National and University Library of Iceland's aim is to be a source of knowledge for everyone. It serves the Icelandic community in all areas of reference and academic discipline and plays a leading role in the collection, preservation and dissemination of information, thus making a vigorous contribution to culture, research and creative work.

Budget cuts and constraints continued in the Library's operations as in recent years. The budget allocations were cut by 2% which makes the total cut since 2008 around 22%. During this period acquisition prices went up, mainly because of the low rate of the Icelandic króna. The largest purchase items were for The Iceland Consortium for Electronic Subscriptions (ICES).

Operational expenses were streamlined and cut but the operating balance for the year 2012 was negative by 9.3 m. kr. The difference was financed by the Library's funds. Vacant positions have not been filled except where strictly necessary and staffing positions (FTE's) were nearly the same as last year. At the end of the year, two positions were vacant. Travel, training and conferences were minimal. Some necessary maintenance tasks that had not been planned were carried out, including cleaning and repairing of all windows in the house to prevent mold and also strengthening of the safety software for the computer system. The Library received extra funding for the windows maintenance, a grant from Netríkið Ísland (Iceland the eNation) for development of the discovery service *leitir.is* and a grant from Vinnumálastofnun (Directorate of Labour) for hiring students for summer jobs, all these resulting in higher revenues than planned.

Among milestones and big projects that have been completed is the amalgamation of the Center for Oral History into the Library in March. The Library signed the Berlin Declaration for Open Access in

September. A new web with a bibliography of Saga translations was launched on December 1st and the redesigned web for digitized maps of Iceland was opened. At last Althingi passed new library laws nr. 150/2012 on the 19th of December.

TARGET AGREEMENT

Under the performance targets agreed on in 2005 between the Library and the Ministry of Education, Science and Culture, the main emphasis has been on the Library's role as an information provider. A revision of the performance targets has been discussed, but not carried out. The focus is on the Library's roles as a digital national library and a digital research library. Work was done on the following tasks under these headings during the year:

DIGITAL NATIONAL LIBRARY

Digitization of Icelandic materials

Althingi granted funds for digitization of local newspapers and political printings and the digitization unit in Akureyri was open until the end of the year. A priority was given to contracts with publishers for digitizing Icelandic peer-reviewed journals. Several sponsored projects secured some funding for digitization, mainly connected to the web *timarit.is*. The total number of digitized pages available on *timarit.is* at the end of the year was 4.3 million. All the pages have been scanned (OCR-read) which makes text searches possible. Digitization and cataloguing of manuscripts continued on *handrit.is* and 1.360 manuscripts have been digitized, a total of 347.000 pages. At the end of the year 410 titles, a total of 160.000 pages, were accessible on *baekur.is*. The Saganet from 2001 was closed down, but the material will be accessible on *handrit.is* and *baekur.is*. The majority of scans on *islandskort.is* were updated in relation to a new design for the web and many new maps were added.

Reception and harvesting of Icelandic digital material

Icelandic websites are harvested on a regular basis into the Icelandic web archive, *vefsafn.is*. It currently contains about 2.200 million documents. At the end of the year about 41.000 URL's

belonged to the .is domain. The quantity of data is 37 terabytes, with a back-up copy.

The Library operates Skemman, an open-access repository for universities, containing dissertations and staff research papers. Skemman is hosted in a DSpace repository, which is open source software. The project is a collaborative venture between the universities and university level institutions. It hosts nearly 13.000 works.

Rafhladan.is which opened for the public in 2011 is another DSpace repository, for the purpose of preserving Icelandic legal deposit materials that are born digital. The material is either collected by library staff or individuals, institutions or companies can deliver material over the web. It hosts around 2500 entities.

Nearly 200 CD disks with music were copied to repositories and some digital material was received through the Center for Oral History.

DIGITAL RESEARCH LIBRARY

National Access

With new laws for the Library from 2011 The Iceland Consortium for Electronic Subscriptions (ICES) became part of the NULI. In the year 2012 the Library received additional funding from the government because of the devaluation of the króna. Revisions of contracts with publishers for the next three years were nearly finished, but future financing and the organization of the project must be reviewed.

To enhance access to the content of ICES and subscriptions of the universities, the SFX link solver and A-Z list have been used. From the year 2011 the content of ICES has been searchable in *leitir.is* and the bX Recommender Service was implemented as well. All these systems are operated by Landskerfi bókasafna. The content has also been made available through other search engines and discovery services such as Google Scholar, High Wire and Scirus. Usage of the ICES subscriptions is growing.

The Library's websites

It is a priority task to enhance access to the Library's collections and give information about the services. A project of reviewing the Library's websites came to an end and all the webs, other than webs containing digitized material, are now in the same management system, making web management and system administration easier. The review takes into account the priorities identified in a survey of webs in Icelandic public

institutions and applies the WCAG 2.0 (Web Content Accessibility Guidelines) regarding access by people with disabilities and impaired vision. At the end of the year, eighteen webs were in operation but some of them are collaboration projects and have their own design. Web traffic is monitored by Modernus and Google Analytics, giving different results. The usage is increasing.

Social media

The Library has a page on Facebook that is used to announce events and changes in Library operations and has more than 1200 friends connected to the page. The Manuscript Collection, the Women's Archive and the Music and Film Collection also have their own Facebook-pages. The Music and film collection also operates a MySpace-page for the purpose of collecting new material and to be in touch with Icelandic musicians that publish their works on the Internet. The users of Uglan, the intranet of the University of Iceland, can add a Library Link to their personal pages, receive news from the Library and connect directly to e-resources. The link was updated.

Open Access

Nordbib, a funding programme for research and development in the area of Open Access to scholarly and scientific information at a Nordic level came to an end with a conference in Copenhagen in June. All sponsored projects were finished but the Nordic national libraries continued the project of digitizing Nordic scientific journals.

The University of Iceland appointed a committee to formulate a policy on open access in line with the University policy. The committee delivered a draft that went through a consultation process within the faculties. All reviews were gathered at the end of the year. Rannis - The Icelandic Centre for Research issued rules claiming that publishing of research funded by Rannis shall be in Open Access as stated in the policy of the Science and Technology Council.

This report gives an account of the main projects carried out over the year 2012 at the Library, with statistics reflecting performance, key figures covering operations and the main figures from the financial statements.

Ingibjörg Steinunn Sverrisdóttir
National Librarian

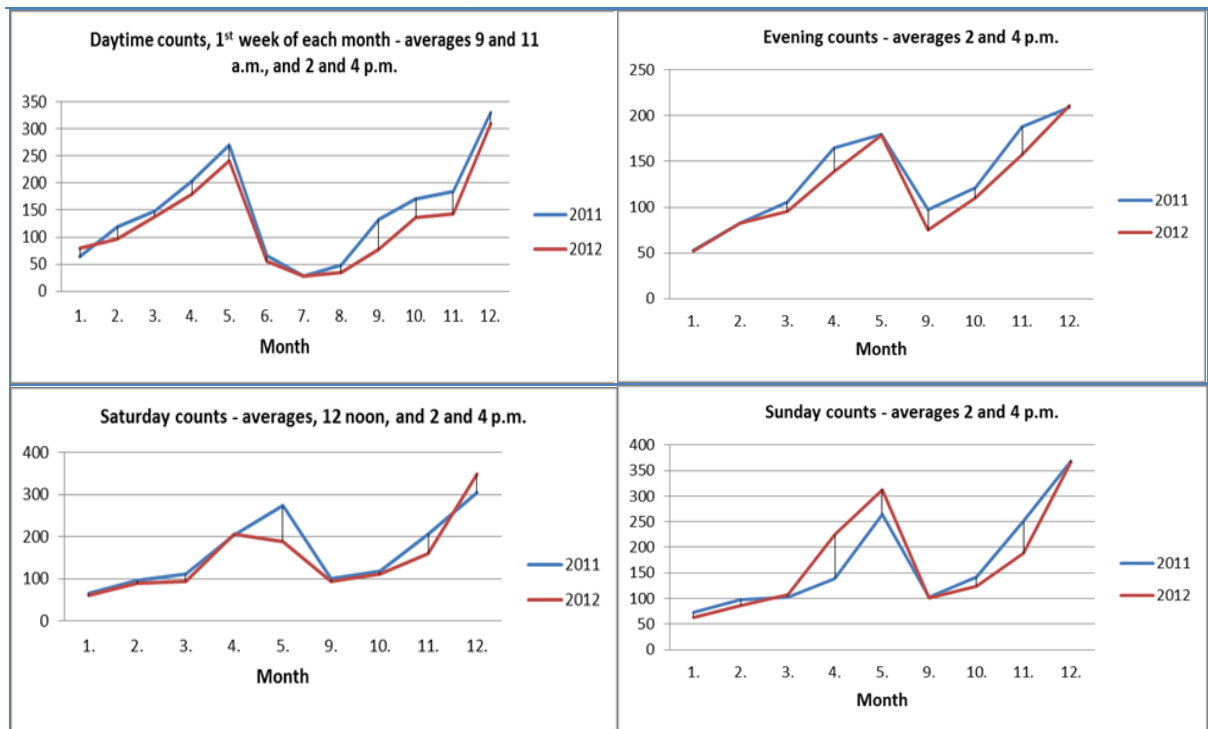
KEY STATISTICS

At the end of each year, statistics are processed covering the number of Library users and the services provided, and also the Library's holdings, acquisitions and various aspects of its operations, such as the work of the Photographic Unit and the Bookbinding Unit, staffing levels and the Library's financial position. Some changes have been introduced to the presentation of these statistics, with the aim of simplifying them and bringing them into line with changes in operations.

USERS AND SERVICES

Library users include both those who visit the Library and those who make use of its websites. Guests using the Manuscript Department and National Department reading room are counted; precise counts of other users are not feasible, but surveys are made of users of the open areas on the 3rd and 4th floors in the first week of each month. On weekdays during the university examination season, their numbers can reach up to 350.

GUESTS USING 3RD AND 4TH FLOORS, 2011-2012



WEBSITE USAGE

	Users		Pages opened	
	2011	2012	2011	2012
timarit.is (Newspapers and journals)	610.785	660.438	7.657.533	7.043.093
skemman.is (Dissertations - research papers)	187.576	225.661	1.762.738	2.049.618
landsbokasafn.is (Main Library website)	96.138	83.691	422.115	381.335
handrit.is (Manuscripts)	22.205	24.338	212.213	254.335
doktor.landsbokasafn.is (Doctoral theses)	9.676	2.727	28.059	27.872
islandskort.is (Antique maps of Iceland)	5.946	5.303	58.804	57.355
vefsafn.is (Archived web pages)	10.093	12.610	129.416	176.167
utgafuskra.is (Icelandic national bibliography)	4.275	2.658	13.804	10.319
jonashallgrimsson.is (The poet Jónas H.)	7.867	10.114	34.551	36.922
sagnanet.is (Medieval Icelandic manuscripts)	5.450	864	12.142	1.956
hask.landsbokasafn.hi.is (Cataloguers' handbook)	1.469	1.254	43.890	36.641
baekur.is (Books)	11.607	14.944	245.975	279.753
kvennasogusafn.is (Women's history archive)	4.622	6.550	16.450	22.496
hvar.is (ICES)	50.480	42.764	199.508	202.338
rafhladan.is (Born digital legal deposit)	6.757	6.807	68.534	34.589
openaccess.is (info on Open Access)	818	609	2.041	2.118
inngangur.landsbokasafn.is (Intranet)	333	4.902	8.185	116.736
sagas.landsbokasafn.is		376		5510
Total	1.036.097	1.106.610	10.915.958	10.739.153

The Saganet was closed down in March but the material is accessible on *handrit.is* and *baekur.is*. The web *openaccess.is* was also closed because a similar website was opened by other parties, *opinnadgangur.is*. In December the web *sagas.landsbokasafn.is* was opened but it contains a bibliography of Saga translations. Usagenumbers for *Inngangur* (the Library Intranet) can not be compared between years, because monitoring did not begin until December 2011.

USE OF DIGITAL JOURNALS AND DATABASES

Articles downloaded:	2009	2010	2011	2012
via ICES ¹	892.277	907.294	1.128.802 ²	1.261.809
from Morgunblaðið. ³	667.546	2.004.420	2.942.890	2.598.155
via subscriptions of University of Iceland ⁴	18.682	33.778	70.381	90.513
Total	1.578.505	2.945.492	4.142.073	3.950.477

LIBRARY CARDS ISSUED

	2009	2010	2011	2012
Students at the University of Iceland	5.079	3.292	13.890 ⁵	13.311
University and Library staff	1.005	941	793	657
Other students	843	705	431	297
Other borrowers	1.087	941	1.174	930
Total	8.014	5.879	16.288	15.195

¹ Further information on the use of the national licences can be found in the annual report of the Icelandic Consortium for Electronic Subscriptions (ICES) on the website *hvar.is*.

² Counting for 2011 was revised and the usage numbers have changed from 1.096.540 to 1.128.802 downloaded articles.

³ The leap in the use of Morgunblaðið archive (material three years old and older) in 2010, is the result of linking to Google.

⁴ Figures on the use of the University's subscriptions cover only part of the databases, and statistics are not available for them all. The growth is partly because of better counting procedures.

⁵ In 2011 information of enrolled students at the University were automatically loaded into Gegnir. This saves a lot of work and time, but separation of active and inactive student users is not possible.

READING ROOM FOR MANUSCRIPT AND NATIONAL COLLECTIONS

Number of visitors	2009	2010	2011	2012
Males				3.718
Females				1.635
Total	7.010	7.350	7.150	5.353

RENT OF READING ROOMS

Number of months				2012
Males				68
Females				249
Total				317

CIRCULATION

	2009	2010	2011	2012
Circulation – main Library and departmental libraries in University of Iceland				
Students at the University of Iceland	45.436	43.899	39.621	37.678
University and Library staff	8.505	8.448	7.495	6.671
Other students	5.025	3.240	3.054	2.920
Other borrowers	8.760	8.889	7.644	7.082
Total	67.729	64.476	57.814	54.351
National Collections materials used in the Reading Room	9.444	9.215	9.565	5.635
Manuscripts used in the Reading Room	3.868	3.189	3.684	2.780
Audio-visual Collection				
Sound recordings - loans	48	39	89	51
Films and related materials - loans	1.170	1.237	1.430	1.222
Digital materials - loans	56	55	52	35
Printed music - loans	100	93	86	125
Films and related materials used on site	257	210	235	254
Sound recordings used on site	174	194	183	168
Total	15.117	14.232	15.324	10.270
Total loans	82.846	78.708	73.138	64.801

INTER-LIBRARY LENDING

	2009	2010	2011	2012
To the Library				
Books, films etc.	1.237	1.367	1.345	1.178
Photocopies	1.130	1.031	1.197	1.170
From the Library				
Books, films etc.	652	573	523	440
Photocopies	914	706	566	312
Total	3.933	3.677	3.631	3.098
To the Manuscript Collections	24	71	38	24
From the Manuscript Collections	90	47	81	70
Total	114	118	119	94
Total Inter-library loans	4.047	3.795	3.750	3.194

PRINTING AND COPYING BY LIBRARY USERS

Number of pages	2009	2010	2011	2012
Printed	403.526	210.799	669.873	338.067
Photocopied	455.213	373.435	242.711	175.372

REFERENCE SERVICES

	2009	2010	2011	2012
Number of users attending training courses				
Introductory courses for UI staff/students	1.490	1.386	767	996
Advanced courses for UI staff/students	1.037	991	989	736
Others	159	241	24	81
Total	2.686	2.618	1.780	1.813
Number of training courses				
Introductory courses for UI staff/students	36	34	29	46
Advanced courses for UI staff/students	54	48	54	47
Others	17	18	10	4
Total	107	100	93	97
Pamphlets				
New	5	5	4	7
Re-issued	25	20	23	23
Total	30	25	27	30
Enquiries handled	2009	2010	2011	2012
Reference				
By e-mail	607	467	544	566
By phone or in person	214	611	114	193
Extensive reference searches	30	28	25	47
Audio-visual Collections	29	25	18	15
National Collections	32	24	22	17
Women's history archive (visits and enquiries)	232	369	335	277
Center of Oral history				25
Total⁶	1.144	1.524	1.058	1.140



The exhibition *Thorbjörn Egner í 100 ár.*

⁶ Results from previous years have been corrected.

COLLECTIONS AND FINANCIAL MANAGEMENT

ACQUISITIONS

Items received under legal deposit ⁷	2009	2010	2011	2012
Books (printed works registered as books)	7.349	6.156	6.458	5.260
Periodicals (individual issues)	8.598	6.916	6.579	6.943
Newspapers (individual issues)	5.592	4.003	6.226	7.125
Annual reports	630	719	579	444
Posters	456	224	334	268
Maps	68	99	49	11
Printed ephemera	9.000	7.552	6.372	8.026
Sound recordings ⁸	750	800	915	769
Video tapes and DVDs ⁹	72	107	93	60
Audio books	120	121	60	180
Multimedia discs/computer data	3	0	14	8
Digital items in Skemman	1.787	2.214	2.779	2.207
Digital items in Rafhlaðan		993	1.424 ¹⁰	56
Web archiving – documents (thousands)	2010	2011	2012	
The Icelandic web domain	228.886	208.744	266.623	285.703
Weekly selected archiving	93.088	95.630	75.503	98.171
Event-related collections	36.658	36.944	15.857	1.164
Total documents (thousands)	358.632	341.318	357.983	385.038
Other acquisitions	2009	2010	2011	2012
Books, purchased	1.837	1.456	2.525	3.287
Books, donations/exchanges	3.829	4.210	6.532	3.574
Foreign periodicals, paid by Library	624	552	511	450
Foreign periodicals, paid by UI institutions	52	50	30	28
Foreign periodicals, donations/exchanges	500	400	310	300
Periodicals, back-numbers (volumes)	129	34	203	160
Icelandic periodicals, purchased	123	106	109	104
Icelandic periodicals, donated	47	53	50	40
Sound recordings, purchased	88	54	186	136
Sound recordings, donated	12	54	6	24
Video tapes and DVDs, purchased	291	175	300	319
Video tapes and DVDs, donated	21	236	145	36
Audio books		33	3	2
Acquisitions by Manuscript Collections	61	50	80	53
Acquisitions by Women's history archive		27	13	11
Acquisitions by Center for Oral History			14	28

⁷ Counting of the three copies of books, newspapers, audio discs and multimedia discs that are preserved in the Library; but two copies of printed ephemera and posters are counted. The figures for ephemera are estimates.

⁸ In most cases three copies of each are received, one of which is preserved in the Akureyri Provincial Library (Amtsbókasafnið á Akureyri).

⁹ Titles.

¹⁰ Corrected number, but counting for 2011 was too high.

PHOTOGRAPHIC UNIT

	2009	2010	2011	2012
Digital images (pages)				
Newspapers and periodicals	543.777	302.258	357.740	316.188
Books	7.807	57.434	88.912	54.670
Manuscripts	82.335	109.877	41.644	21.097
Maps			20	939
Not published on the Library's websites				31.118
Total pages	633.919	469.569	488.316	424.012

BINDING SERVICES

	2009	2010	2011	2012
Units	54.865	48.226	48.587	43.275

ISSN AND ISBN

ISSN (International Standard Serial Numbers)	2009	2010	2011	2012
ISSNs assigned	41	39	23	25
ISBN (International Standard Book Numbers)				
Registrant element ranges assigned	63	66	69	88
Individual ISBNs assigned	113	180	194	214

AVERAGE FULL-TIME-EQUIVALENT STAFF PER UNIT¹¹

	2009	2010	2011	2012
Administration and IT			20.78	17.63
Acquisitions and cataloging			9.00	8.50
National collections and digital conversion			11.75	13.05
Communications and electronic access			19.20	17.32
Services and university relations			11.52	12.88
Total FTE's	79.52	76.55	72.25	69.38
Personnel by category FTE's	2009	2010	2011	2012
Qualified librarians	25.60	26.35	24.70	24.30
Librarians with university degrees	27.23	23.48	21.93	21.45
Other librarians	10.87	10.90	11.47	11.48
Assistants and office staff	7.92	7.92	6.25	3.00
Other staff	7.90	7.90	7.90	9.15
Total FTE's	79.52	76.55	72.25	69.38

¹¹ A new organizational chart was taken into use January the 1st 2011 and former division into departments and units is therefore irrelevant.

OPERATING EXPENSES 2012 (ISK '000)

	2009	2010	2011	2012
Payroll	404.475	418.110	418.866	425.890
Acquisitions	262.153	292.795	266.583	297.469
Other expenses	267.698	269.631	229.736	241.158
Total	934.326	980.536	915.185	964.517
Percentage breakdown %	2009	2010	2011	2012
Payroll	43.3	42.7	45.8	44.2
Acquisitions	28.1	32.8	29.1	30.8
Other expenses	28.6	24.5	25.1	25.0

INCOME STATEMENT 2012 (ISK '000)

Income	2011	2012
University of Iceland's allocation for acquisitions	48.074	50.692
Fees for Icelandic Consortium for Electronic Subscriptions (ICES)	107.706	106.978
Other income	127.141	67.505
Government appropriation	617.528	730.088
Total	900.449	955.263
Expenses		
Payroll	418.866	425.890
Operation and maintenance of buildings	111.354	124.047
Purchase of acquisitions	59.365	73.173
Icelandic Consortium for Electronic Subscriptions (ICES)	207.218	224.296
Systems (Consortium of Icelandic Libraries. etc.)	24.971	23.887
Operation of computer systems and technical equipment	28.396	29.807
Other expenses	65.015	63.417
Total	915.185	964.517
Operating surplus	-14.736	-9.254



Guests at the opening of the exhibition *Eylenduhugsanir – Musings*.