



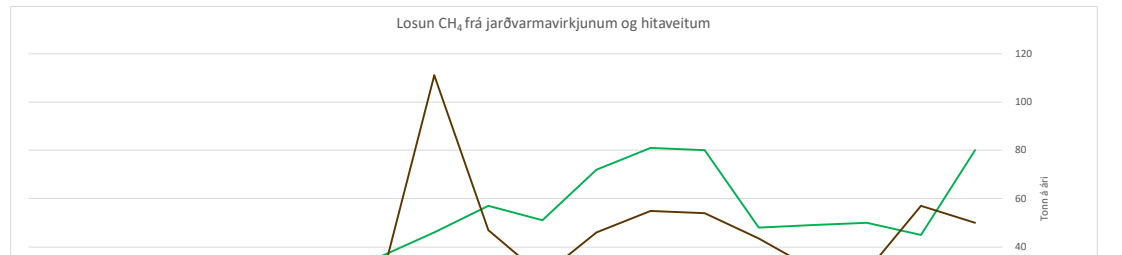
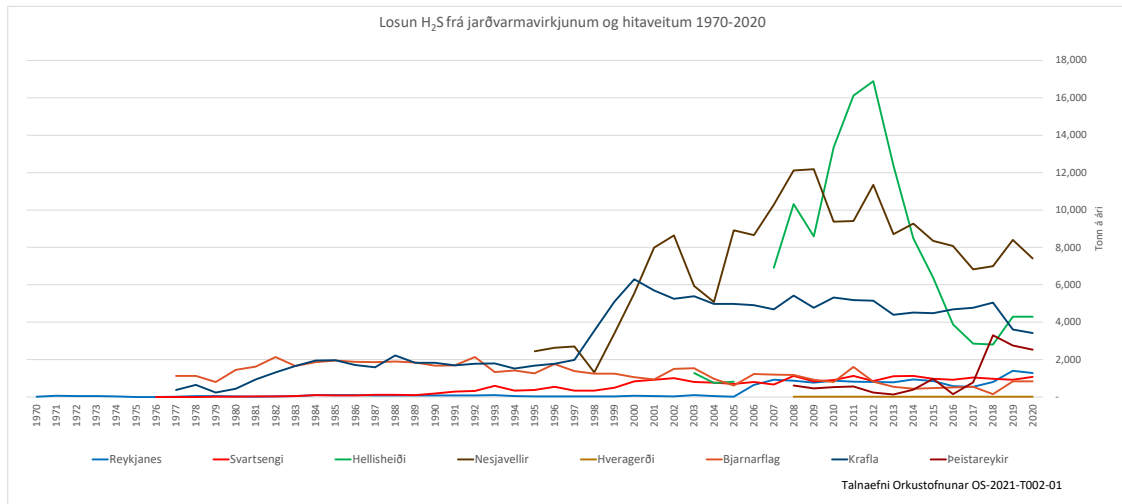
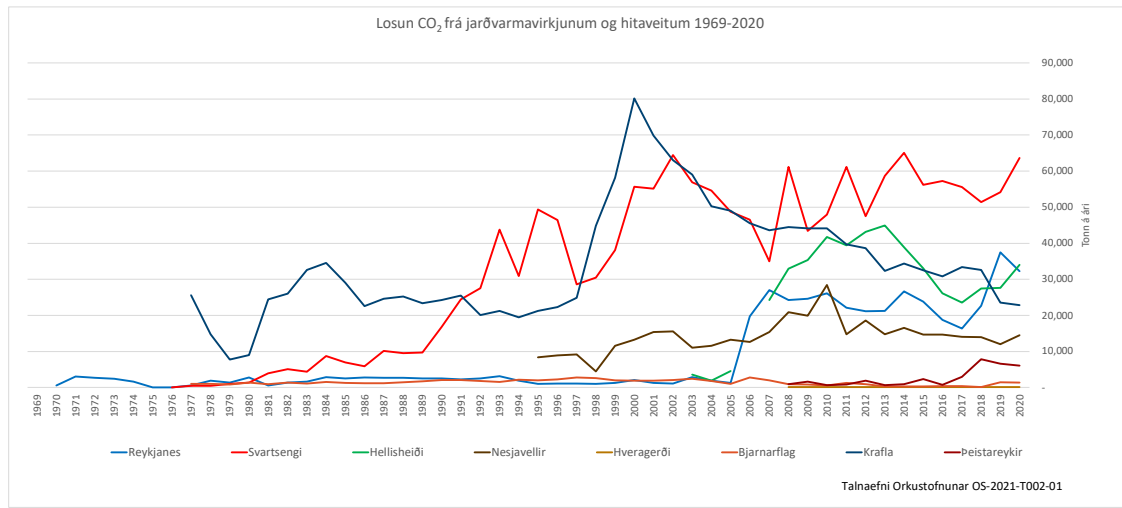
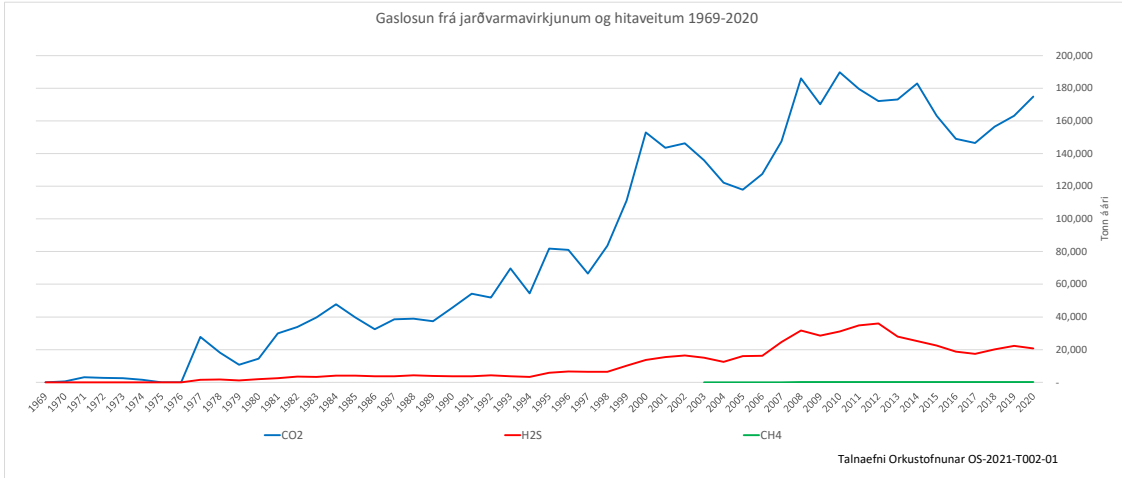
Efni/Subject: Talnaefni Orkustofnunar / Orkustofnun Data Repository  
 Titill/Title: Gaslosun jarðvarmavirkjana og hitaveitna 1969-2020 / Gas Emissions of Geothermal Power Plants and Utilities 1969-2020  
 Lyklorð/Keywords: Gaslosun, gastegund, CO<sub>2</sub>, H<sub>2</sub>S, CH<sub>4</sub>, jarðvarmavirkjun, hitaveita / Gas emissions, gases, CO<sub>2</sub>, H<sub>2</sub>S, CH<sub>4</sub>, geothermal power plant, geothermal heat plant  
 Útdækniflokkur/Identifier: OS-2021-T002-01  
 Útgáfudagur/Date: 07/05/2021  
 Síðast uppfært/Last edition: Orkustofnun  
 Höfundur/Creator: 1.1.1969-31.12.2020  
 Tímabil/Period: Orkustofnun (2020), OS-2021-T001-01: Gaslosun jarðvarmavirkjana og hitaveitna 1969-2020 [tölvuskjal].  
 Tilvísun: Orkustofnun (2020), OS-2021-T001-01: Gas Emissions of Geothermal Power Plants and Utilities 1969-2020 [data file].  
 Citatíon: Orkustofnun (2020), OS-2021-T001-01: Gas Emissions of Geothermal Power Plants and Utilities 1969-2020 [data file].

Tafla 1. Heildarlosun gastegunda út í andrúmslofti frá jarðvarmavirkjunum og hitaveitum 1969-2020.  
 Table 1. Total gas emissions into the atmosphere from geothermal power plants and heat plants 1969-2020.

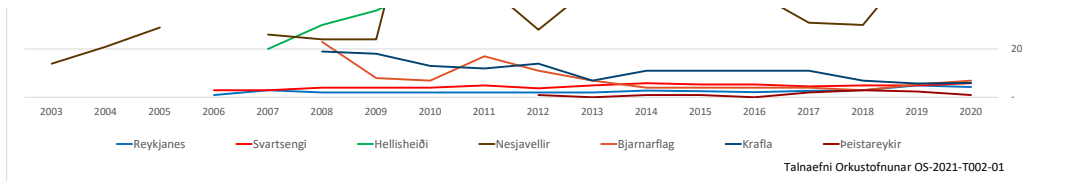
Virkin eða svæði Plant or area	Reykjanes (CHP Plant)			Svartsengi (CHP Plant)			Hellisheiði (CHP Plant)			Nesjavallir (CHP Plant)			Hveragerði (Heat Plant)			Bjarnarflag (CHP Plant)			Krafla (Power Plant)			Peistareykir (Power Plant)			Samtals Total				
	318910 374281			331640 379650			384646 395223			389713 402461			392903 390530			599411 572753			602545 580265			592992 599039							
	Gastegund / Gas Type			CO <sub>2</sub> H <sub>2</sub> S CH <sub>4</sub> [tonnes/annum]			CO <sub>2</sub> H <sub>2</sub> S CH <sub>4</sub> [tonnes/annum]			CO <sub>2</sub> H <sub>2</sub> S CH <sub>4</sub> [tonnes/annum]			CO <sub>2</sub> H <sub>2</sub> S CH <sub>4</sub> [tonnes/annum]			CO <sub>2</sub> H <sub>2</sub> S CH <sub>4</sub> [tonnes/annum]			CO <sub>2</sub> H <sub>2</sub> S CH <sub>4</sub> [tonnes/annum]			CO <sub>2</sub> H <sub>2</sub> S CH <sub>4</sub> [tonnes/annum]			CO <sub>2</sub> H <sub>2</sub> S CH <sub>4</sub> [tonnes/annum]				
2020	32,265	1,281	4	53,663	1,081	6	34,000	4,300	80	14,500	7,400	50	160	10	-	1,362	836	7	22,833	3,423	6	6,086	2,530	1	174,869	20,861	154		
2019	37,500	1,397	5	54,172	924	5	27,600	4,300	45	15,000	8,400	57	160	10	-	1,503	840	5	23,554	3,604	6	6,612	2,758	2	163,101	22,234	126		
2018	22,684	801	3	51,444	983	5	27,500	2,800	50	14,000	7,000	30	160	10	-	171	146	3	32,636	5,047	7	7,862	3,304	3	156,457	20,088	101		
2017	16,391	546	3	55,602	1,036	5	23,555	2,866	49	14,020	6,829	31	160	10	-	427	551	4	33,397	4,780	11	7,922	787	2	146,474	17,405	104		
2016	18,800	581	2	57,300	932	5	26,102	3,893	48	14,655	8,076	44	160	10	-	367	521	4	30,802	4,689	11	770	150	-	148,956	18,852	114		
2015	23,791	865	3	56,212	969	5	33,077	6,384	80	14,726	8,350	54	160	10	-	337	477	4	32,483	4,483	11	2,345	971	1	163,131	22,509	158		
2014	26,677	941	3	65,087	1,136	6	38,861	8,484	81	16,579	9,275	55	160	10	-	296	447	4	34,395	4,520	11	895	391	1	182,950	25,204	161		
2013	21,255	779	2	58,712	1,106	5	44,934	12,374	72	14,794	8,709	46	160	10	-	300	539	7	32,307	4,392	7	672	136	-	173,134	28,045	139		
2012	21,190	800	2	47,503	848	4	43,158	16,881	51	18,612	11,349	28	160	10	-	956	826	11	38,604	5,151	14	1,863	246	1	172,046	36,111	111		
2011	22,114	819	2	61,153	1,128	5	39,479	16,110	57	14,800	9,414	47	160	10	-	1,292	1,603	17	39,683	5,180	12	827	570	-	179,508	34,834	140		
2010	26,102	880	2	47,974	903	4	41,722	13,340	46	28,396	9,384	11	160	10	-	530	613	7	44,100	5,321	13	656	523	-	189,640	31,174	183		
2009	24,651	766	2	49,427	844	4	35,325	8,581	36	19,978	12,175	24	160	10	-	826	950	8	44,145	4,733	18	1,654	462	-	170,107	28,541	92		
2008	24,310	879	2	61,182	1,126	4	32,937	10,323	30	20,904	12,114	24	160	10	-	962	1,176	23	44,515	4,424	19	964	613	-	185,934	31,665	102		
2007	27,021	925	3	34,985	663	3	24,210	6,902	20	15,412	10,275	25	160	10	-	1,973	1,189	-	43,607	4,681	-	-	-	-	147,368	24,646	52		
2006	19,710	651	1	46,537	802	3	45,817	802	3	12,673	8,650	29	160	10	-	1,053	619	-	45,514	4,915	-	-	-	-	157,423	16,259	4		
2005	1,276	19	-	48,707	700	-	4,581	819	-	13,259	8,818	26	160	10	-	-	-	-	48,964	4,907	-	-	-	-	117,839	16,661	29		
2004	1,880	46	-	54,606	772	-	1,943	748	-	11,551	5,084	21	-	-	-	-	-	1,839	974	-	-	-	-	122,099	12,608	21			
2003	2,856	106	-	56,922	811	-	3,602	1,283	-	11,058	5,941	14	-	-	-	-	-	2,406	1,543	-	-	-	-	135,867	15,068	14			
2002	1,135	40	-	64,400	1,003	-	-	-	-	12,673	8,650	29	-	-	-	-	-	2,032	1,268	-	-	-	-	146,232	16,443	14			
2001	1,295	48	-	55,134	921	-	-	-	-	15,408	7,990	50	-	-	-	-	-	1,922	934	-	-	-	-	143,626	15,594	-			
2000	2,042	72	-	55,615	837	-	-	-	-	13,241	5,544	42	-	-	-	-	-	1,910	1,064	-	-	-	-	152,982	13,815	-			
1999	1,290	42	-	58,186	1,403	-	-	-	-	11,584	3,403	50	-	-	-	-	-	1,973	1,253	-	-	-	-	111,111	10,301	-			
1998	1,035	36	-	30,451	342	-	-	-	-	4,484	1,317	17	-	-	-	-	-	2,461	1,254	-	-	-	-	83,495	6,492	-			
1997	1,109	38	-	28,642	345	-	-	-	-	9,200	2,703	23	-	-	-	-	-	2,761	1,386	-	-	-	-	66,568	6,460	-			
1996	1,054	33	-	46,410	538	-	-	-	-	8,948	2,629	29	-	-	-	-	-	2,274	1,760	-	-	-	-	80,985	6,749	-			
1995	975	33	-	49,351	383	-	-	-	-	8,361	2,456	26	-	-	-	-	-	2,032	1,268	-	-	-	-	81,953	5,809	-			
1994	1,915	59	-	30,883	338	-	-	-	-	2,166	1,420	12	-	-	-	-	-	2,166	1,420	-	-	-	-	54,487	3,345	-			
1993	1,135	100	-	43,787	599	-	-	-	-	1,774	1,330	10	-	-	-	-	-	1,247	1,804	-	-	-	-	69,744	3,833	-			
1992	2,541	86	-	27,558	326	-	-	-	-	1,774	2,134	14	-	-	-	-	-	2,010	1,781	-	-	-	-	51,983	4,327	-			
1991	2,234	77	-	24,409	300	-	-	-	-	2,091	1,701	13	-	-	-	-	-	2,533	1,688	-	-	-	-	54,516	3,766	-			
1990	2,546	87	-	16,793	189	-	-	-	-	2,086	1,681	12	-	-	-	-	-	2,300	1,837	-	-	-	-	45,724	3,793	-			
1989	2,546	87	-	9,704	111	-	-	-	-	1,697	1,852	13	-	-	-	-	-	1,697	1,852	-	-	-	-	37,346	3,883	-			
1988	2,671	92	-	9,545	123	-	-	-	-	1,488	1,901	16	-	-	-	-	-	1,488	1,901	-	-	-	-	38,870	4,342	-			
1987	2,707	92	-	10,135	112	-	-	-	-	1,210	1,871	17	-	-	-	-	-	1,210	1,871	-	-	-	-	38,642	3,661	-			
1986	2,808	98	-	9,936	87	-	-	-	-	1,180	1,880	18	-	-	-	-	-	1,180	1,880	-	-	-	-	32,474	3,774	-			
1985	2,561	102	-	6,913	94	-	-	-	-	1,249	1,945	19	-	-	-	-	-	1,249	1,945	-	-	-	-	39,802	4,101	-			
1984	2,900	101	-	8,707	109	-	-	-	-	1,539	1,863	14	-	-	-	-	-	1,539	1,863	-	-	-	-	47,706	4,029	-			
1983	1,623	49	-	4,355	54	-	-	-	-	1,146	1,666	12	-	-	-	-	-	1,146	1,666	-	-	-	-	39,701	3,431	-			
1982	1,320	28	-	5,111	35	-	-	-	-	1,394	2,132	15	-	-	-	-	-	1,394	2,132	-	-	-	-	33,856	3,513	-			
1981	528	11	-	4,948	11	-	-	-	-	944	1,632	16	-	-	-	-	-	944	1,632	-	-	-	-	29,885	2,623	-			
1980	2,789	36	-	1,494	20	-	-	-	-	1,362	1,451	11	-	-	-	-	-	1,362	1,451	-	-	-	-	14,567	1,951	-			
1979	1,350	45	-	994	15	-	-	-	-	788	804	10	-	-	-	-	-	788	804	-	-	-	-	10,859	1,112	-			
1978	1,866	45	-	462	8	-	-	-	-	1,034	1,125	10	-	-	-	-	-	1,034	1,125	-	-	-	-	18,124	1,821	-			
1977	609	12	-	504	6	-	-	-	-	1,034	1,125	10	-	-	-	-	-	1,034	1,125	-	-	-	-	27,792	1,512	-			
1976	-	-	-	42	-	-	-	-	-	-	-	-	-	-	-	-	-	-	-	-	-	-	-	42	-	-	-	-	-
1975	-	-	-	-	-	-	-	-	-	-	-	-	-	-	-	-	-	-	-	-	-	-	-	-	-	-	-	-	-
1974	1,623	30	-	-	-	-	-	-	-	16,98	11,42	0,04	-	-	-	-	-	101,80	10,33	-	-	-	-	61,623	6,021	-	1,623	30	-
1973	2,462	46	-	-	-	-	-	-	-	17,15	7,55	0,03	-	-	-	-	-	120,63	11,96	-	-	-	-	83,09	8,58	0,014	2,462	46	-
1972	2,750	60	-	-	-	-	-	-	-	17,97	9,65	0,02	-	-	-	-	-	147,31	13,44	-	-	-	-	97,32	10,79	0,010	2,750	60	-
1971	3,044	74	-	-	-	-	-	-	-	25,80	14,31	-	-	-	-	-	-	159,00	113,59	-	-	-	-	102,93	11,57	-	3,044	74	-
1970	590	14	-	-	-	-	-	-	-	355,38	172,65	-	-	-	-	-	-	355,38	172,65	-	-	-	-	99,67	10,82	-	590	14	-
1969	-	-	-	-	-	-	-	-	-	211,21	117,65	-	-	-	-	-	-	211,21	117,65	-	-	-	-	115,93	10,47	-	-	-	-

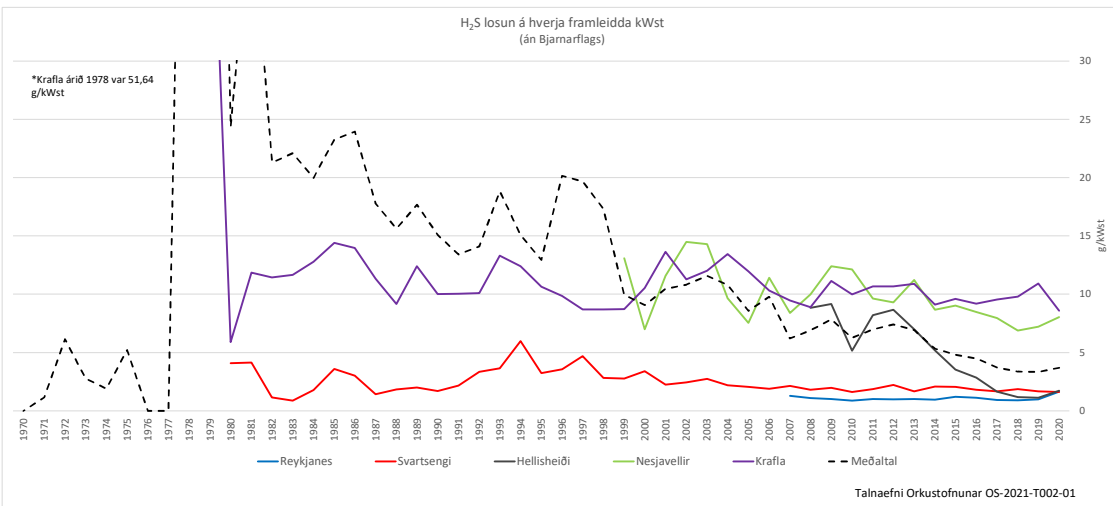
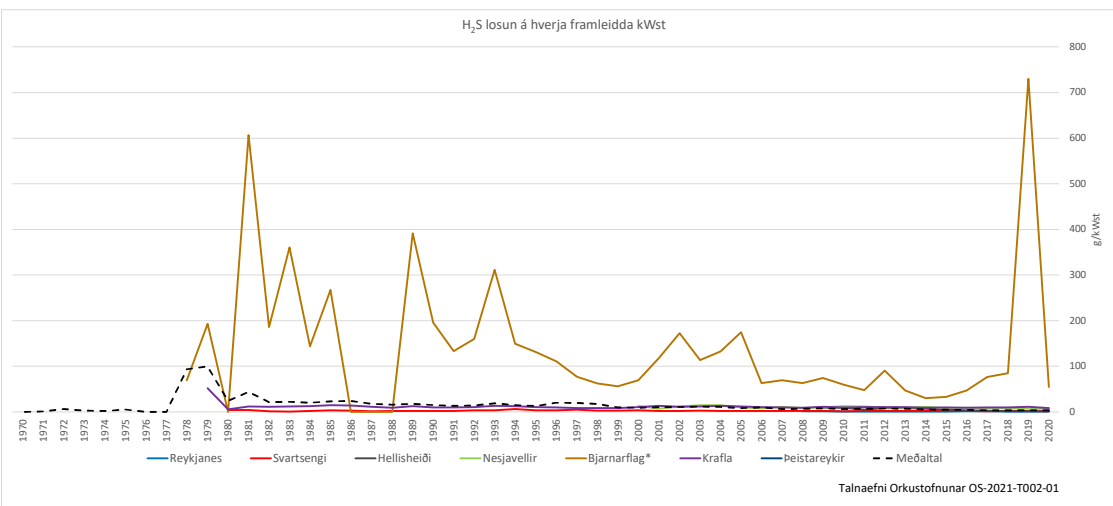
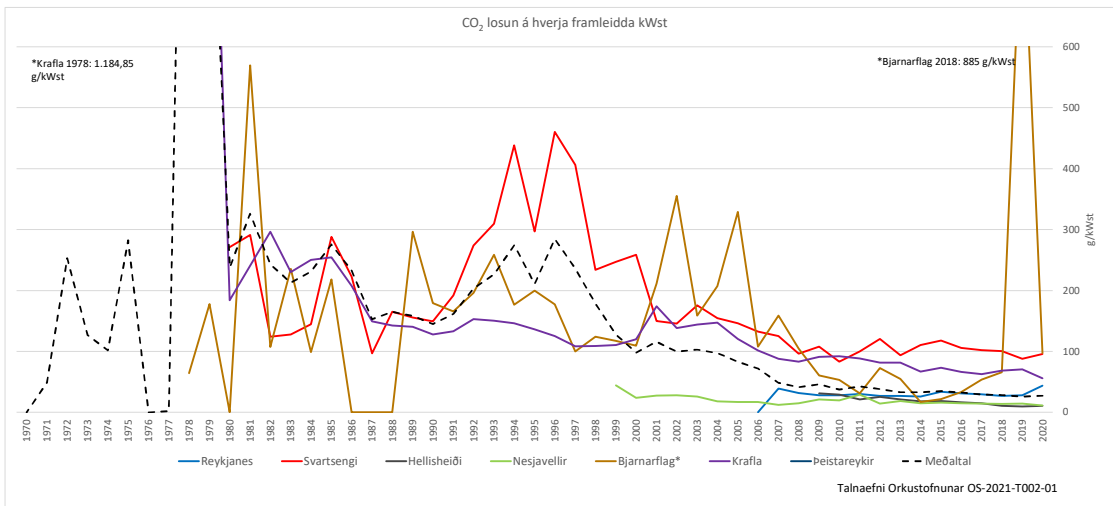
Vinsamlegast vísið í heimild: Talnaefni Orkustofnunar OS-2021-T002-01  
Please reference: Orkustofnun Data Repository OS-2021-T002-01

\*Mikið minnkun var á framleiðslu árið 2018 í Gufustöðinni í Bjarnarflag vegna viðhalds veltúnaðar, því er losun á framleidda kWst mun hærri en fyrri ár/Due to maintenance, the production at Bjarnarflag was much lower in 2018 than previous years, hence the high values per kWh.

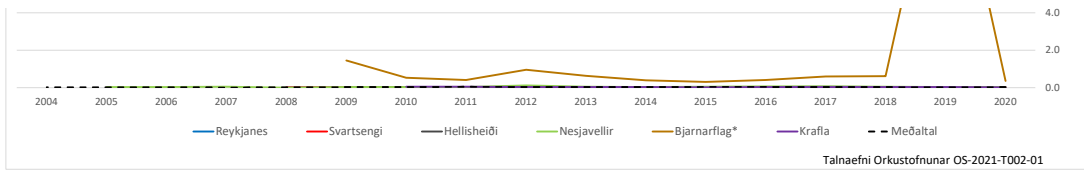


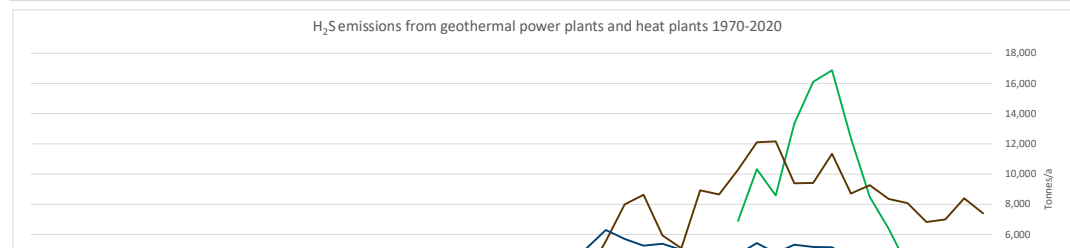
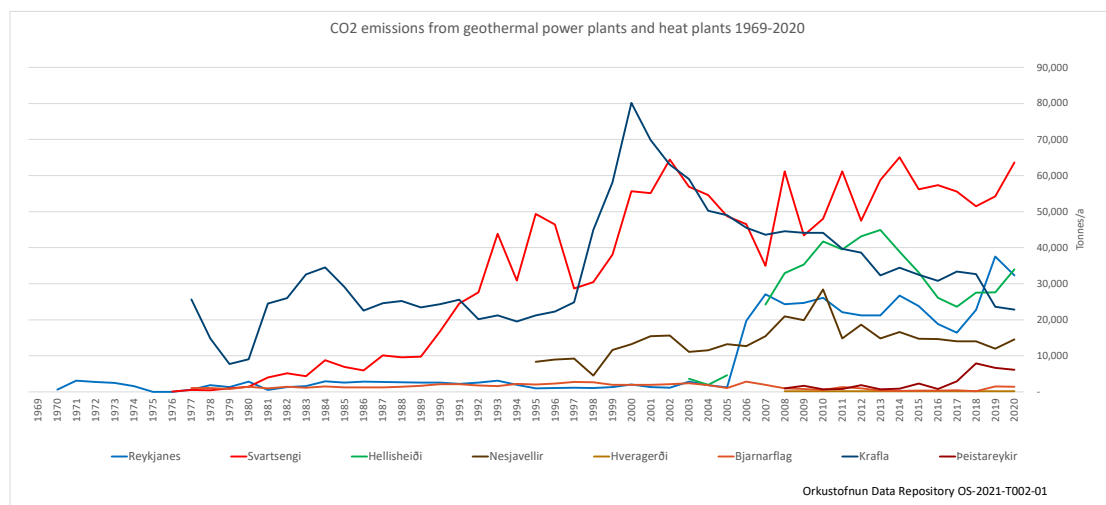
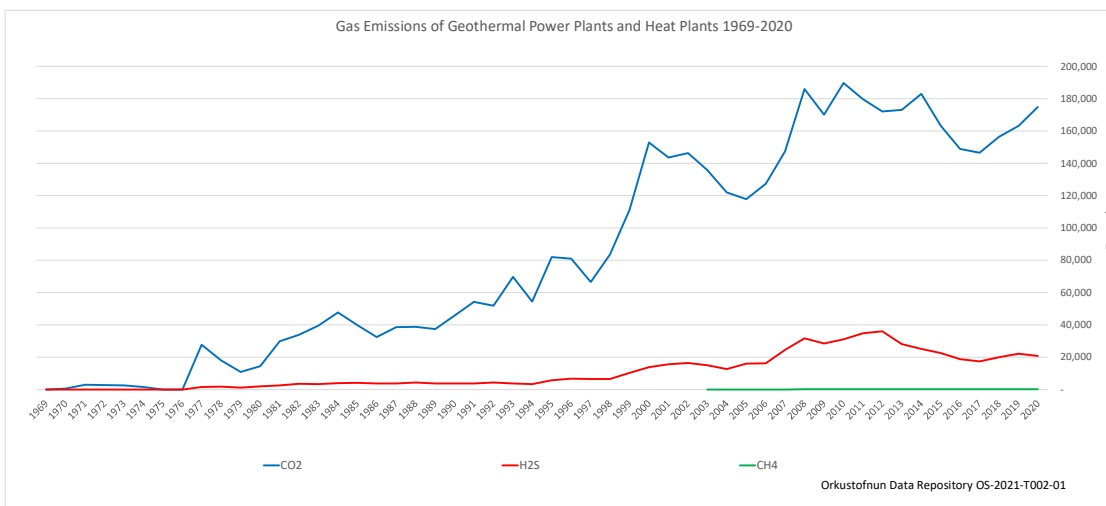
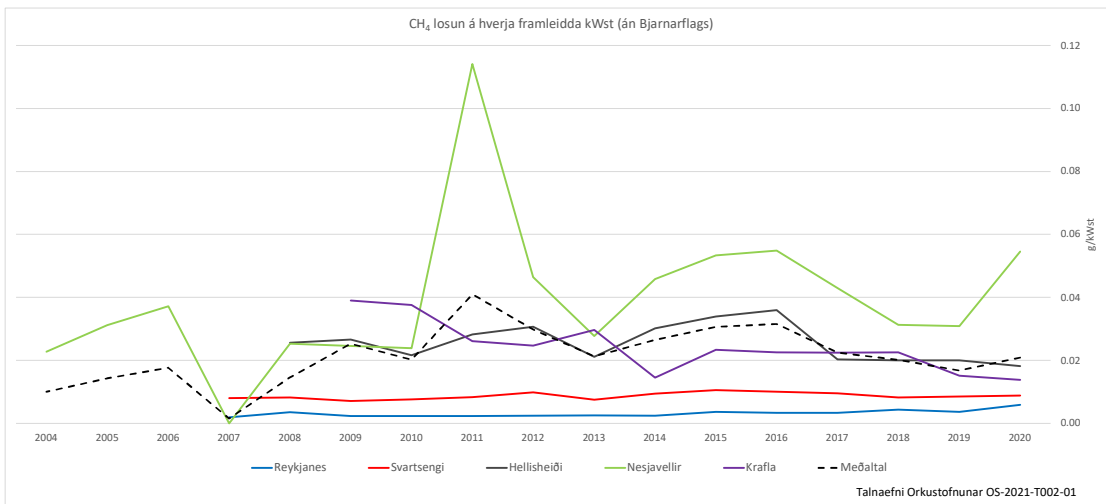
Vinsamlegast vísið í heimild: Talnaefni Orkustofnunar OS-2021-T002-01  
Please reference: Orkustofnun Data Repository OS-2021-T002-01



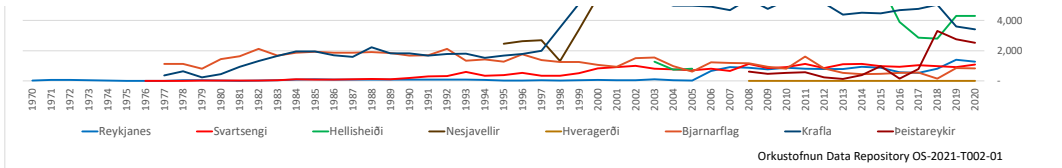


Vinsamlegast vísið í heimild: Talnaefni Orkustofnunar OS-2021-T002-01  
Please reference: Orkustofnun Data Repository OS-2021-T002-01

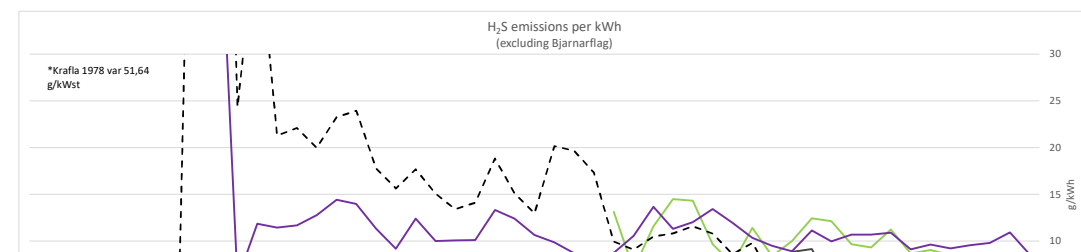
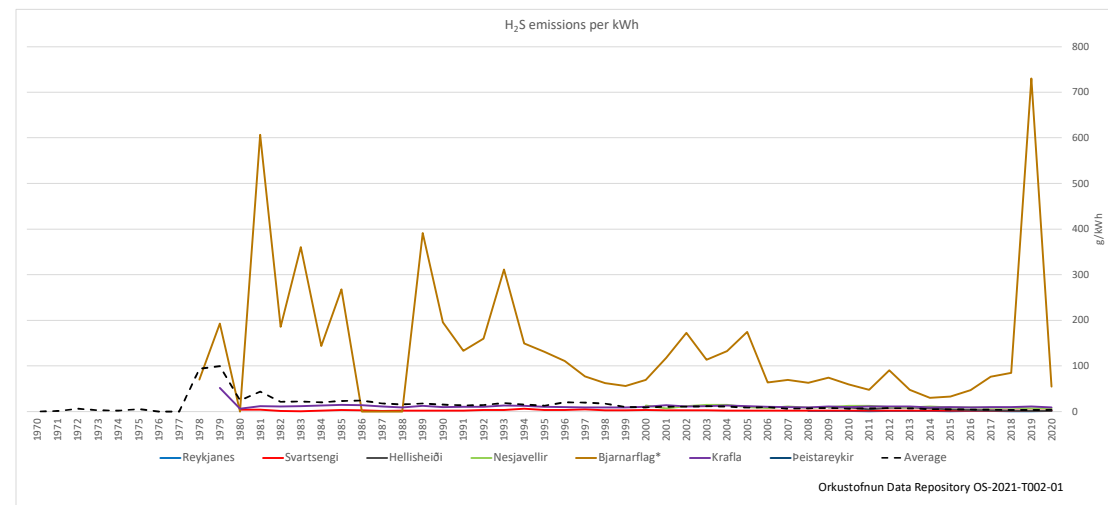
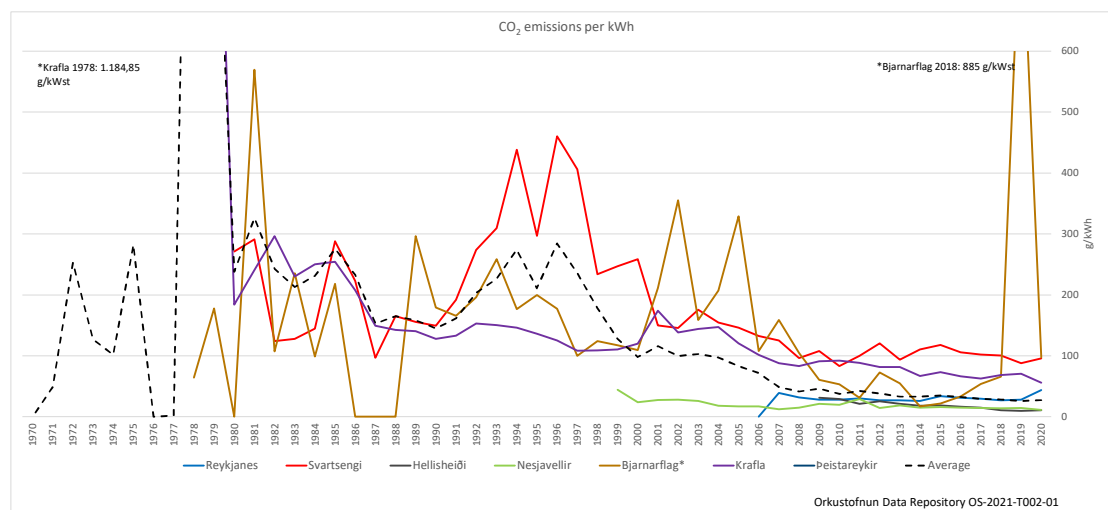
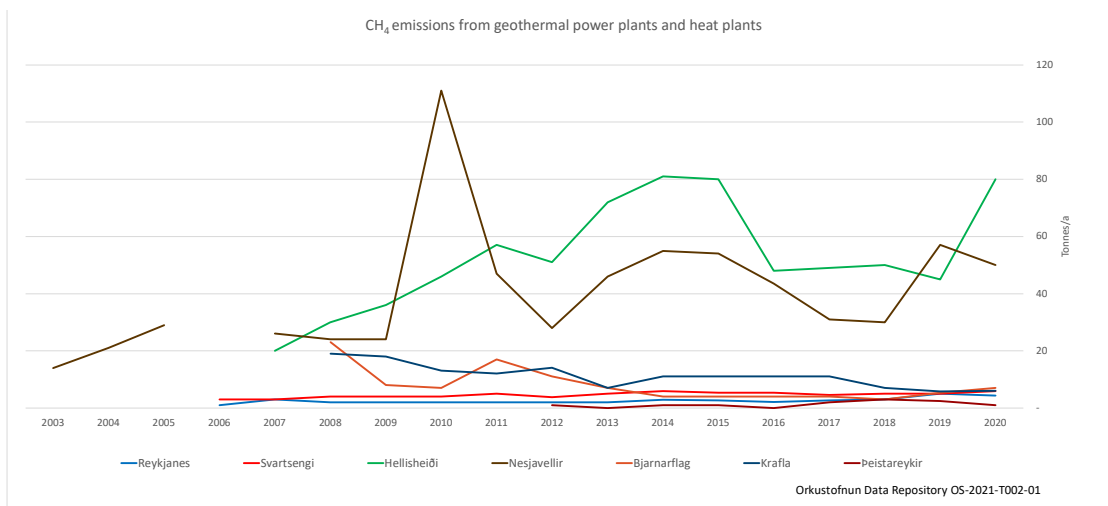




Vinsamlegast vísið í heimild: Talnaefni Orkustofnunar OS-2021-T002-01  
Please reference: Orkustofnun Data Repository OS-2021-T002-01

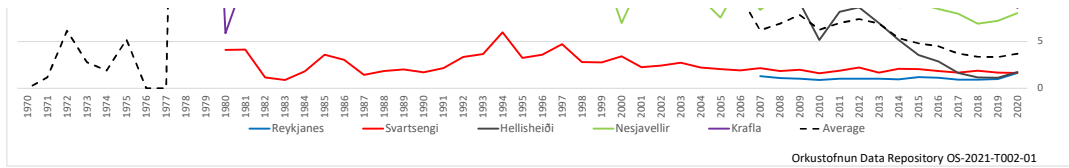


Orkustofnun Data Repository OS-2021-T002-01





Vinsamlegast vísið í heimild: Talnaefni Orkustofnunar OS-2021-T002-01  
Please reference: Orkustofnun Data Repository OS-2021-T002-01



Orkustofnun Data Repository OS-2021-T002-01

