

Reykjavík, April 20th 2011

Summary of radionuclide concentrations in air

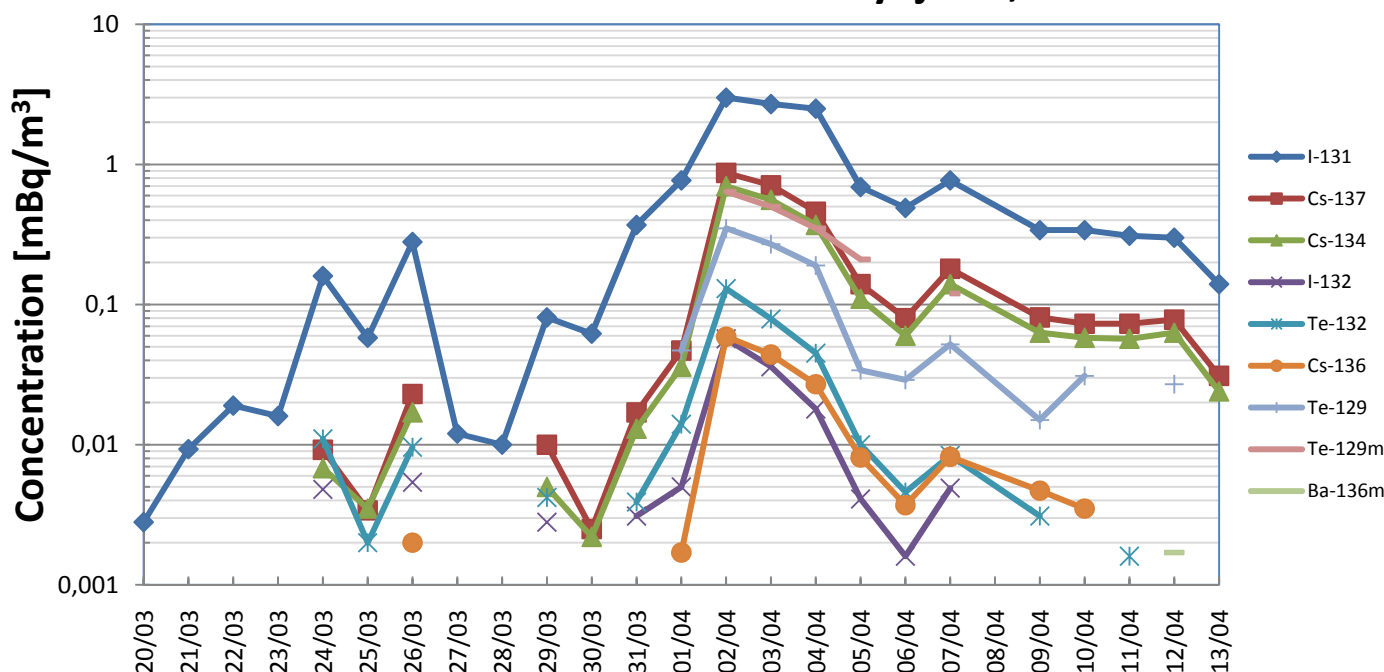
March 19th - April 13th, Reykjavík, Iceland (64°08'N, 21°56'W)

Radionuclides from Fukushima were first detected in samples collected during the March 19th-20th sampling period. Aerosol samples are collected for 24 hours, with filters changed daily at 13:30 UTC. Total daily air volume throughput is on average 15 000 m³. Minimum detectable concentrations for I-131, Cs-137, Cs-134, and Cs-136 are approximately 0.002-0.003 mBq/m³ (2–3 µBq/m³).

The Cs-137/I-131 ratio was typically 4–8% in the beginning (March 25th – April 2nd, with the exception of March 27th–28th. After the increase in concentrations observed on April 3rd, the ratio increased to 20–30%.

The Cs-134/Cs-137 ratio has remained relatively stable at 70 – 80% during the period since these radionuclides were first detected in a sample from March 23rd–24th.

Concentrations in aerosols in Reykjavík, Iceland



Data table

Date*	I-131	Cs-137	Cs-134	I-132	Te-132	Cs-136	Te-129	Te-129m	Ba-136m
20/03	0.0028	-	-	-	-	-	-	-	-
21/03	0.0093	-	-	-	-	-	-	-	-
22/03	0.019	-	-	-	-	-	-	-	-
23/03	0.016	-	-	-	-	-	-	-	-
24/03	0.16	0.0092	0.0068	0.0048	0.011	-	-	-	-
25/03	0.058	0.0034	0.0035	-	0.002	-	-	-	-
26/03	0.28	0.023	0.017	0.0054	0.0096	0.002	-	-	-
27/03	0.012	-	-	-	-	-	-	-	-
28/03	0.01	-	-	-	-	-	-	-	-
29/03	0.081	0.01	0.005	0.0028	0.0042	-	-	-	-
30/03	0.062	0.0025	0.0022	-	-	-	-	-	-
31/03	0.37	0.017	0.013	0.0031	0.0039	-	-	-	-
01/04	0.77	0.047	0.036	0.005	0.014	0.0017	0.047	-	-
02/04	3	0.87	0.7	0.057	0.13	0.059	0.35	0.64	-
03/04	2.7	0.71	0.56	0.036	0.079	0.044	0.27	0.5	-
04/04	2.5	0.46	0.37	0.018	0.045	0.027	0.19	0.35	-
05/04	0.69	0.14	0.11	0.0041	0.01	0.0081	0.034	0.21	-
06/04	0.49	0.08	0.06	0.0016	0.0046	0.0037	0.029	-	-
07/04	0.77	0.18	0.14	0.0049	0.0084	0.0082	0.052	0.12	-
09/04	0.34	0.081	0.063	-	0.0031	0.0047	0.015	-	-
10/04	0.34	0.073	0.058	-	-	0.0035	0.031	-	-
11/04	0.31	0.073	0.057	-	0.0016	-	-	-	-
12/04	0.3	0.078	0.063	-	-	-	0.027	-	0.0017
13/04	0.14	0.031	0.024	-	-	-	-	-	-

*The dates in the first column refer to the end of the 24h sampling period. The data for the last few days could be subject to minor changes following validation.