

LAXÁ
PINGEYJARSLA

Prófill I

Jarðviðnámsmælingar við Laxá í Þingeyjarsýslu, 12. 9. 1947.

Um afstöðu profils sjá uppdrátt.

Afstaða póla mtr.	Spenna VeVoll	Straumur IeAmp.	Spenna VpVoly	Þéttisviðnám Ohm/cm.
4-4-4	22.5	0.0066	0.275	105,000
8-8-8,	-	0.0074	0.151	103,000
12-12-12	-	0.0062	0.075	91,500
16-16-16	-	0.0112	0.080	71,700
20-20-20	-	0.0067	0.029	54,500
24-24-24	-	0.0074	0.022	44,800 0
28-28-28	-	0.0058	0.012	36,400
32-32-32	-	0.0075	0.0115	30,800
36-36-63-	-	0.0073	0.0098	30,300
40-40-40	-	0.0089	0.0104	29,300
44-44-44-	-	0.0056	0.0056	27,700

Profill 2.

Jarðviðnámsmælingar við Laxá í Þingeyjarsíslu 12. 9. 1947.

Um afstöðu prófils sjá uppdrátt.

Afstaða póla mtr.	Spenna VeVOLT	Straumur IeAMP .	Spenna VpVOLT	Eðlisviðnám. Ohm/cm
***	22.5	0.0075	0.35I	117,000
8-8-8	-	0.0074	0.13I	89,000
12-12-12	-	0.0047	0.040	64,500
16-16-16	-	0.0090	0.032	41,300
20-20-20	-	0.0102	0.025	30,700
24-24-24	-	0.0087	0.015	26,000
28-28-28	-	0.0077	0.0109	24,800
32-32-32	-	0.0052	0.0063	24,300

G,B,

Jarðviðnámsmælingar við Laxá í Þingeyjarsíslu 12. 9. 1947.

Um afstöðu profilsins sjá uppdrátt

Afstaða póla mtr.	Spenna VeVolt	Straumur IeAmp.	Spenna VpVolt	Eðlisviðnám. Ohm/cm.
4-4	22,5	0.0062	0.243	98,500
8-8-8	-	0.0057	0.132	117,000
12-12-12	-	0.0090	0.106	88,500
16-16-16	-	0.0054	0.041	76,500
20-20-20	-	0.0054	0.026	60,500
24-24-24	-	0.0073	0.0235	48,500
28-28-28	-	0.0078	0.0180	42,300
32-32-32	-	0.0065	0.0110	34,000
36-36-36	-	0.0083	0.0115	31,300
40-40-40	-	0.0055	0.0068	31,200
44-44-44	-	0.0066	0.0070	29,300

Profill 4.

Jaröviðnámsmælingar við Laxá í Þingeyjarsíslu 12. 9. 1947.

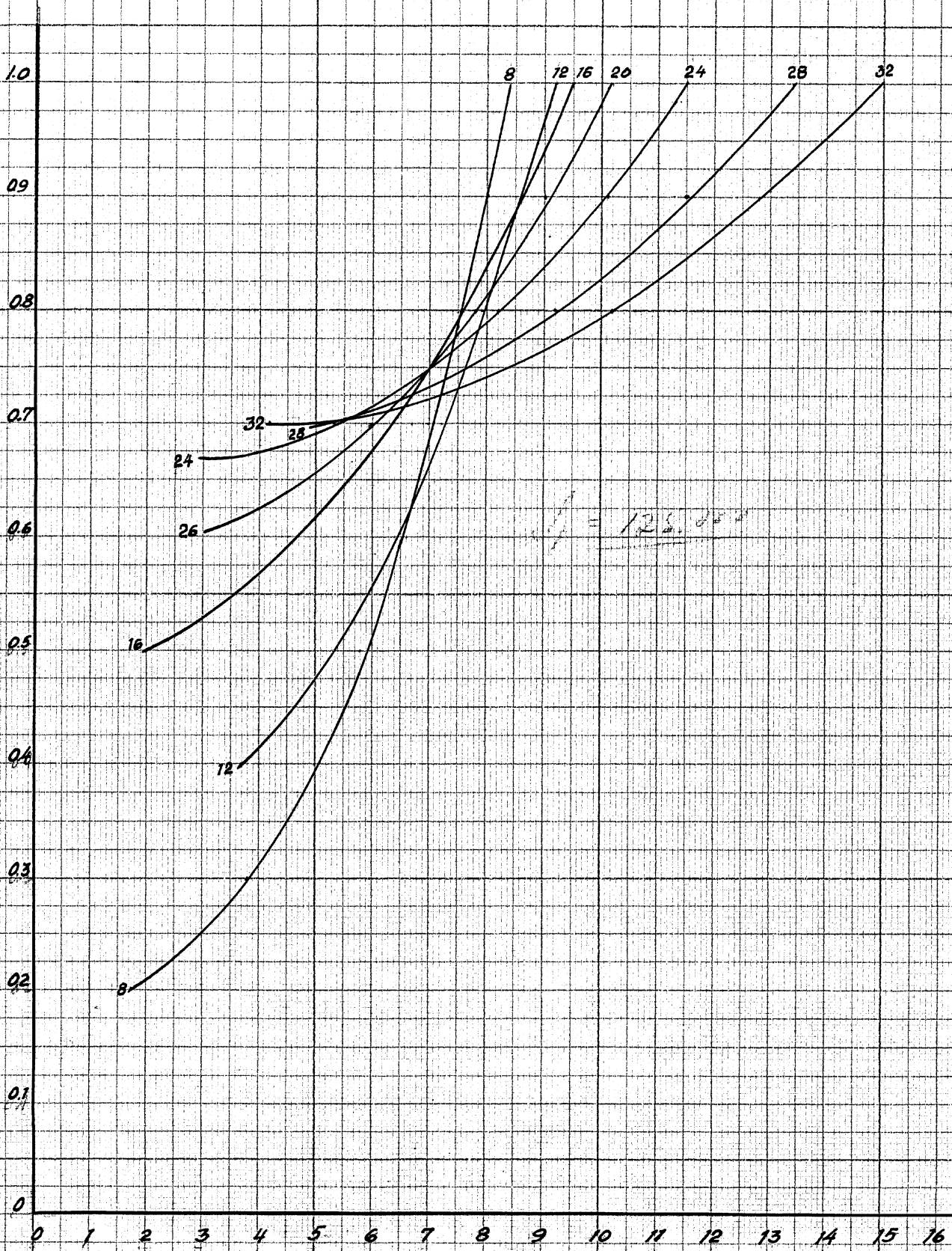
Um afstöðu þrofiksins sjá upprátt.

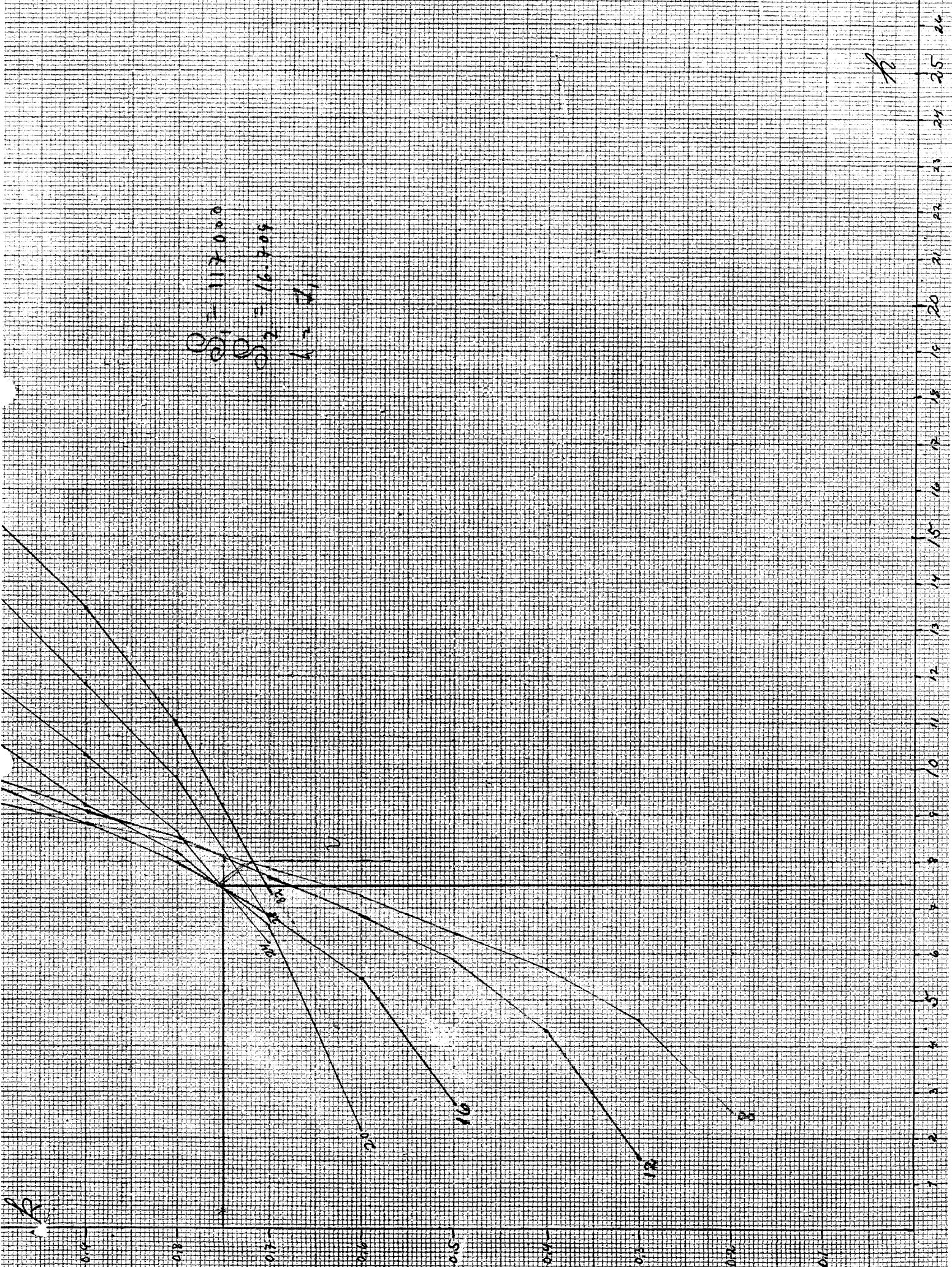
???

Afstaða pola mtr,	Spenna VeVolt	Straumur IeAmp	Spenna VpVolt	Eðlisviðnám. Ohm/cm.
4-4-4	22.5	0.0046	0.206	113,000
8-8-8	-	0.0115	0.237	103,000
12-12-12	-	0.0114	0.110	72,500
16-16-16	-	0.0084	0.045	53,700
20-20-20	-	0.0064	0.022	43,200
24-24-24	-	0.0090	0.0205	34,300
28-28-28	-	0.0103	0.0175	29,800
32-32-32	-	0.0096	0.0120	25,200
36-36-36	-	0.0072	0.0079	24,800

G.B.

PROFIL II





$S_1 = 112000$
 $S_2 = 6400$
 $S_3 = 21$

12

1 2 3 4 5 6 7 8 9 10 11 12 13 14 15 16 17 18 19 20 21 22 23 24 25 26

12

0.1

0.2

0.3

0.4

0.5

0.6

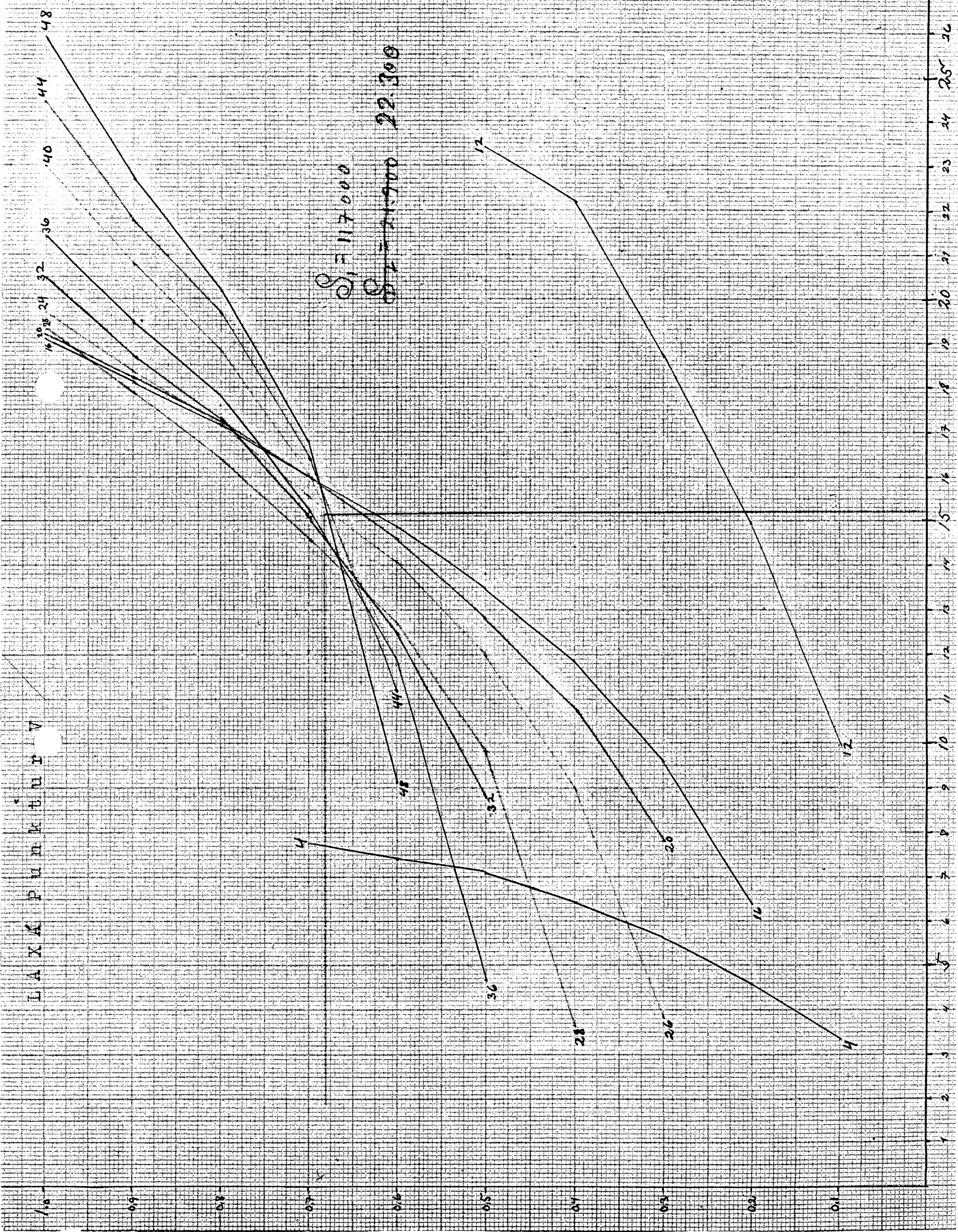
0.7

0.8

0.9

1.0

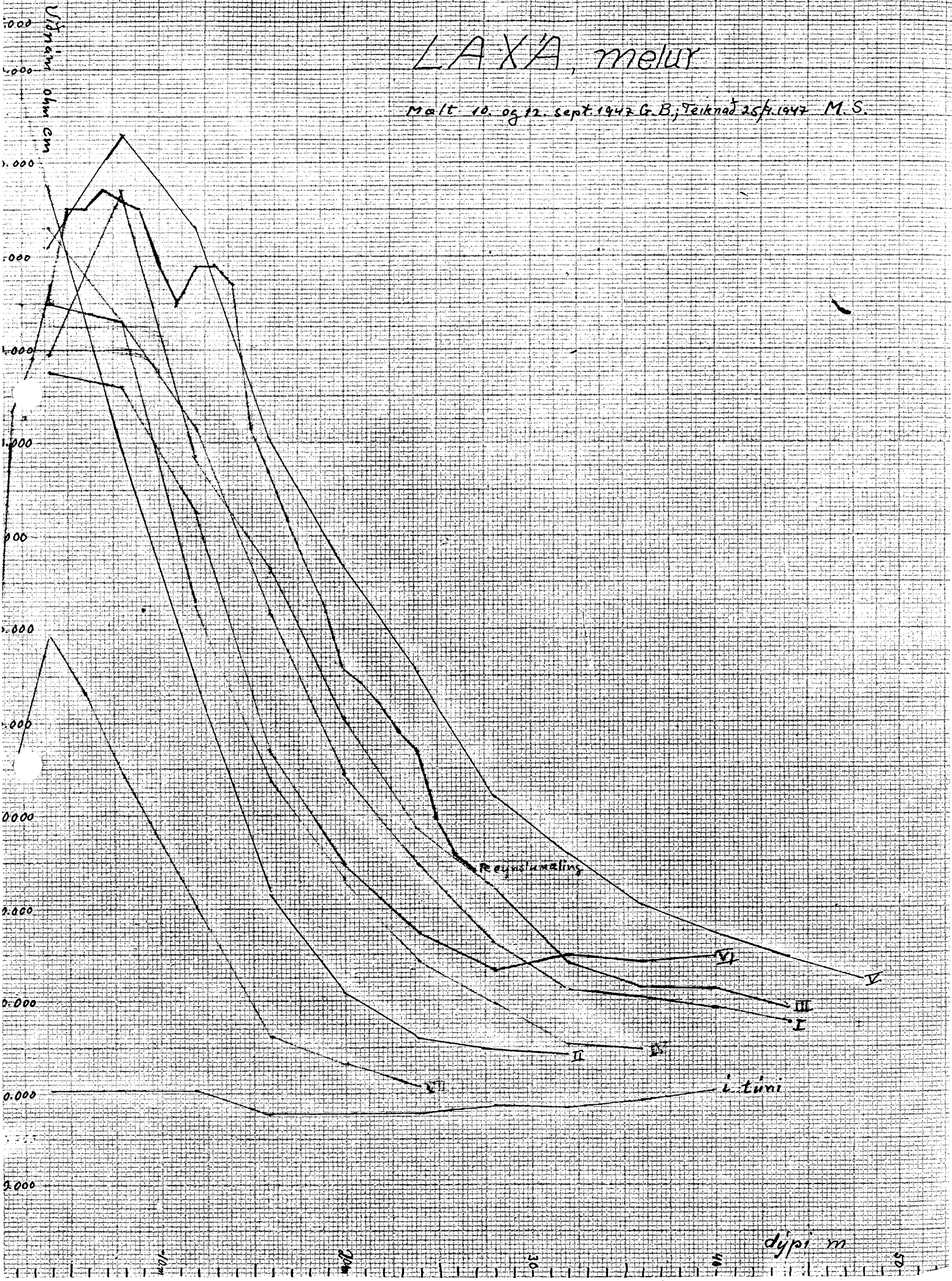
L A X A P u m k t u r V



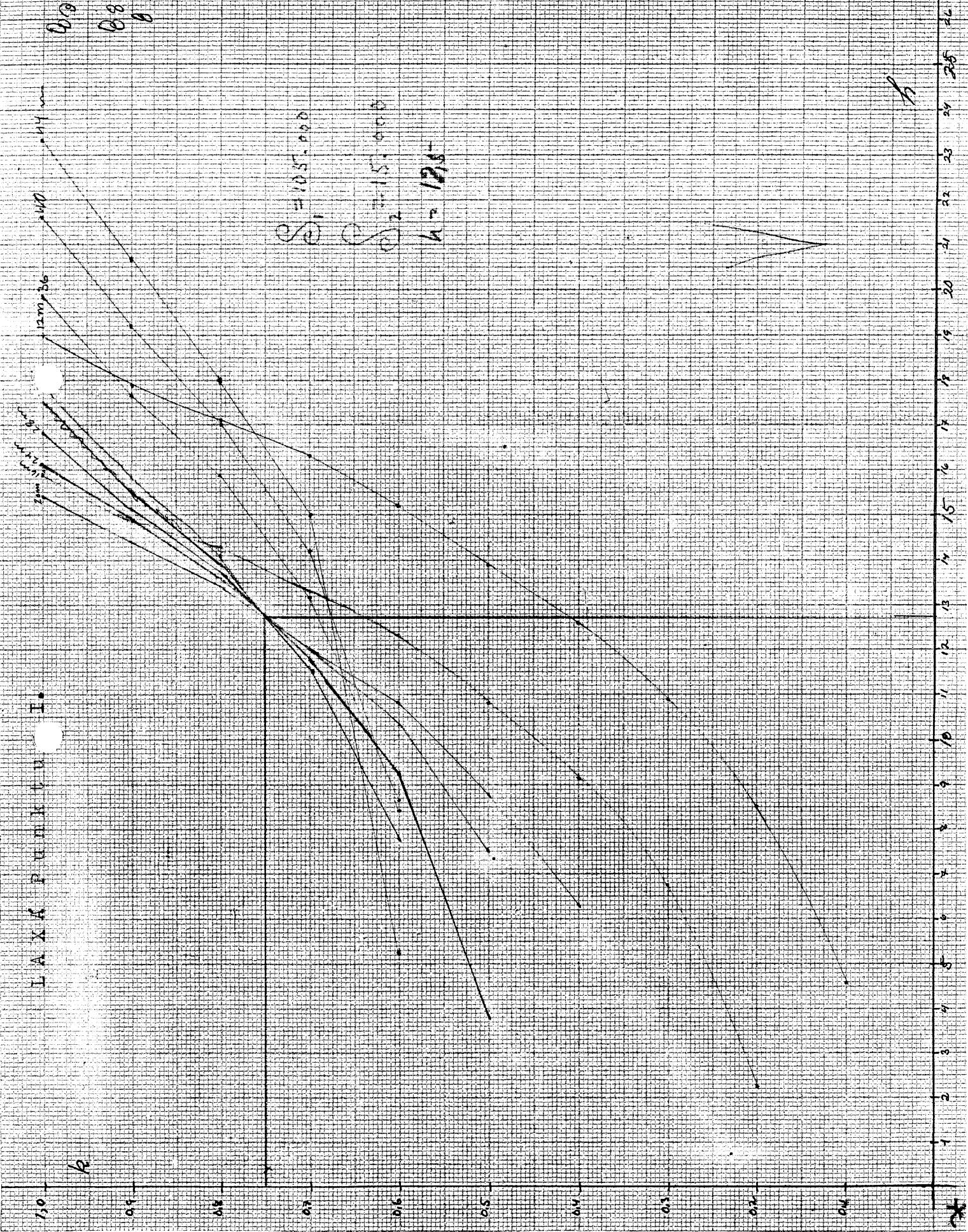
S₁ = 117000
S₂ = 21900 22.300

LAXA, melur

Malt 10. og 12. sept. 1942 G. B.; Teiknad 25. febr. 1947 M. S.



L A X A P U N K T U I.



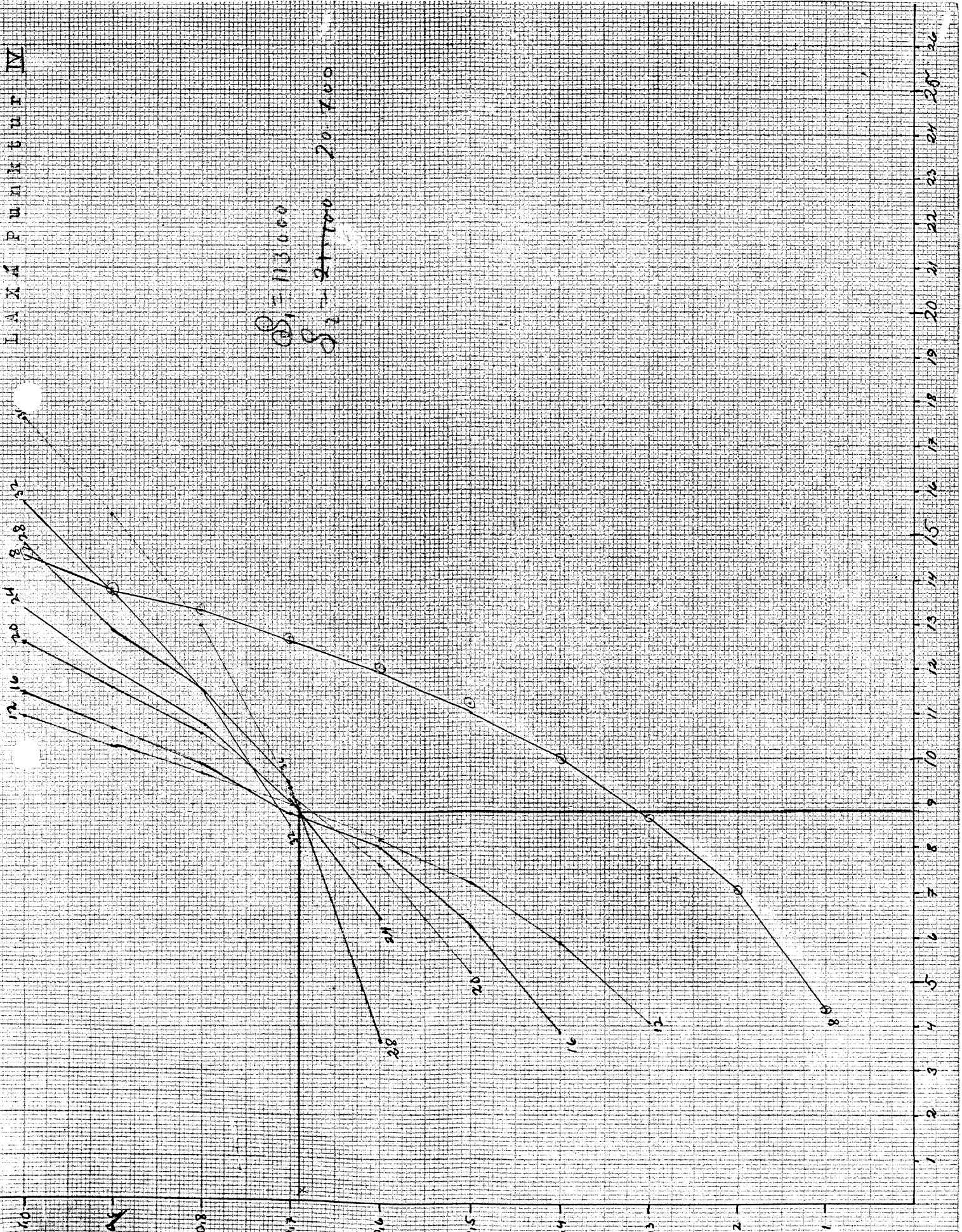
0.8
0.8
0.8

h

LAXA PUMPHUR IV

$$Q_1 = 113000$$

$$Q_2 = 21700 \text{ } 20700$$



Profill 5.

Jarðviðnámsmælingar við Laxá í Þingeyjarsíslu 12.9. 1947.

Um afstöðu profils sjá Uppdrátt.

Afstæða pola mtr.	Spenna VeVolt	Straumur IeAmp.	Spenna VpVólt	Eðlisviðnám. Ohm/cm.
4-4-4	22.5	0.0043	0.190	111,000
8-8-8	-	0.0051	0.124	123,000
12-12-12	-	0.0088	0.131	113,000
16-16-16	-	0.0063	0.056	90,300
20-20-20	-	0.0108	0.066	76,700
24-24-24	-	0.0106	0.046	65,400
28-28-28	-	0.0098	0.029	52,000
32-32-32	-	0.0057	0.013	45,800
36-36-36	-	0.0112	0.020	40,300
40-40-40	-	0.0062	0.0092	37,300
44-44-44	-	0.0058	0.0073	34,700
48-48-48	-	0.0080	0.0085	32,200

?

G.B.

Profill 6.

Jarðviðnámsmælingar við Laxá í Þingeyjajáslu 12.9.1947.

Um afstöðu Profilsins Sjá uppdrátt.

Afstaða póla mtr.	Spenna VeVolt	Straumur IeAmp.	Spenna VpVolt	Eðlisviðná m Ohm/cm.
4+4+4	22.5	0.0052	0.202	97,500
8-8-8	-	0.0090	0.172	96,000
12-12-12	+	0.0085	0.093	82,500
16-16-16	-	0.0088	0.050	57,000
20-20-20	-	0.0062	0.022	44,700
24-24-24	-	0.0097	0.024	37,300
28-28-28	-	0.0117	0.022	33,200
32-32-32	-	0.0056	0.0097	34,800
36-36-36	-	0.0051	0.0077	34,200
40-40-40	-	0.0052	0.0072	34,800

G.B.

Profill 7.

Jarðviðnámsmælingar við Laxá í Þingeyjarsíslu 12.9.1947.

Um afstöðu profilsins sjá uppdrátt.

Afstaða pola mtr,	Spenna VeVolt	Straumur IeAmp.	Spenna VpVolt	Eðlisviðnám. Ohm/cm.
4-4-4	22.5	0.0124	0.342	69,500
8-8-8	-	0.0103	0.113	54,300
12-12-12	-	0.0094	0.052	40,300
16-16-16	-	0.0093	0.025	26,800
20-20-20	-	0.0134	0.025	23,400
24-24-24	-	0.0080	0.011	20,700

G.B.

Jarðviðnámsmælingar við Laxá í Þingeyjarsíslu 12.9.1947.

Profíll þessi er tekin í túni.

Afstaða póla mtr.	Spenna VeVolt	Straumur IeAmp.	Spenna VpVolt	Eðlisviðnám. Ohm/cm.
4-4-4	22.5	0.0152	0.123	20,300
8-8-8	-	0.0173	0.070	20,300
12-12-12	-	0.0150	0.040	20,200
16-16-16	-	0.0114	0.020	17,700
20-20-20	-	0.0146	0.020	17,700
24-24-24	-	0.0153	0.018	17,700
28-28-28	-	0.0172	0.018	18,500
32-32-32	-	0.0153	0.014	18,400
36-36-36	-	0.0147	0.0125	19,200
40-40-40	-	0.0129	0.0104	20,200

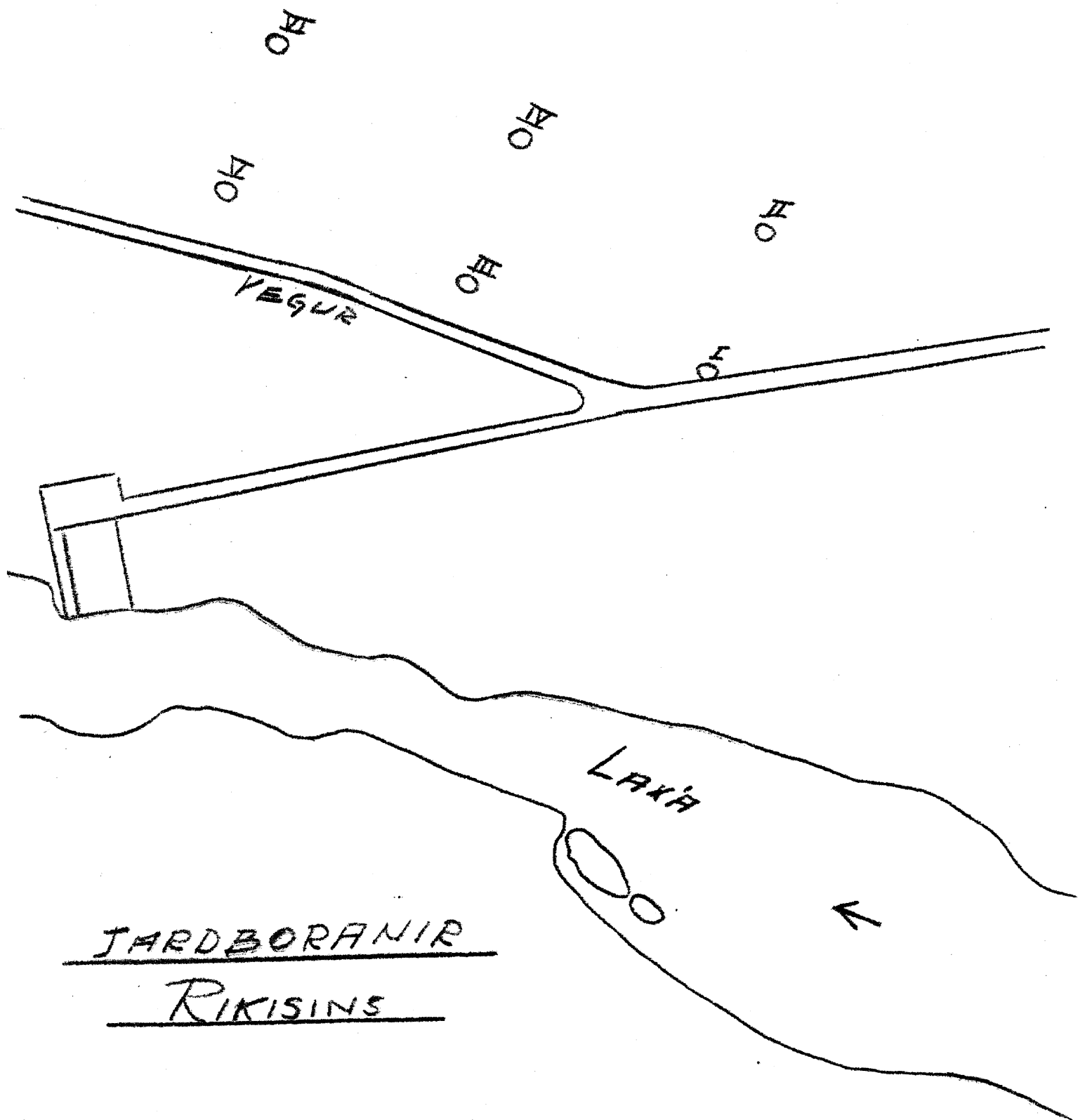
G,B,

Jarðviðnámsmælingar við Laxá í Þingeyjarsíslu 12.9.1947.

Mæling þessi er gerð rjett hjá þúnkþi I.

Afstaða póla mtr.	Spenna VeVólt	Straumur IeAmp.	Spenna VpVólt	Eðlisviðnám Ohm/cm.
I-I-I	22.5	0.0083	0.803	60.800
2-2-2	-	0.0103	0.747	93.500
3-3-3	-	0.0058	0.304	99,000
4-4-4	-	0.0082	0.350	107,000
5-5-5	-	0.0086	0.315	115,000
6-6-6	-	0.0074	0.224	115,000
7-7-7	-	0.0097	0.258	117,000
8-8-8,	-	0.0112	0.258	116,000
9-9-9	-	0.0103	0.209	115,000
10-10-10	-	0.0102	0.177	109,000
11-11-11	-	0.0096	0.147	105,000
12-12-12	-	0.0093	0.134	109,000
13-13-13	-	0.0123	0.164	109,000
14-14-14	-	0.0100	0.122	107,000
15-15-15	-	0.0066	0.064	91,500
16-16-16	-	0.0066	0.057	87,000
17-17-17	-	0.0059	0.045	81,500
18-18-18	-	0.0084	0.057	77,000
19-19-19	-	0.0094	0.057	72,500
20-20-20	-	0.0071	0.037	65,500

Afstaða póla mtr.	Spenna VeVolt	Straumur IeAmp.	Spenna VpVolt	Eðlisviðnám Ohm/cm.
21-21-21	22.5	0.0096	0.047	64,500
22-22-22	-	0.0112	0.048	62,000
23-23-23	-	0.0080	0.030	54,000
24-24-24	-	0.0064	0.0225	51,800
25-25-25-	-	0.0080	0.025	49,300
26-26-26	-	0.0057	0.016	45,800
27-27-27	-	0.0096	0.025	44,200



JARDBORANIR
RIKISINS