



ORKUSTOFNUN
Vatnsorkudeild

LANDMÆLINGAR VEGNA JARÐFRÆÐIRANNSÓKNA
Á FLJÓTSDALSHÉIÐI 1982.

Gunnar Þorbergsson
Inqvar Þór Magnússon

OS-83004/VOD-02 B

Febrúar 1983

ORKUSTOFNUN
Vatnsorkudeild

LANDMÆLINGASKÝRSLA

LANDMÆLINGAR VEGNA JARÐFRÆÐIRANNSÓKNA
Á FLJÓTSDALSHÉIÐI 1982.

Gunnar Þorbergsson
Ingvar Þór Magnússon

OS-83004/VOD-02 B

Febrúar 1983

LANDMÆLINGAR VEGNA JARÐFRÆÐIRANNSÓKNA
Á FLJÓTSDALSHÉIÐI 1982.

MÆLINGAR OG ÚRVINNSLA

Vorið 1982 voru mældir inn punktar á fyrirhuguðu stíflustæði á Miðheiðarhálsi norðvestan við Gilsárvötn. Ekki hafa verið gerð nákvæm kort af stíflustæðinu, en með þessum mælingum fæst nákvæm landhæð í mælipunkunum og jafnvel er unnt að meta lögun hálsins að nokkru leyti, því að mælt var eftir línum, sem liggja þvert yfir hann.

Í ágústlok 1982 voru gerðar landmælingar vegna jarðfræðirannsóknna á Eyjabökkum og á Hraunum. Þá eru einnig teknir með í niðurstöðunum nokkrir punktar, sem mældir voru inn haustið 1980.

Áður en landmælingamenn yfirgáfu rannsóknasvæðið á Hraunum voru reknar niður stikur í eftirtöldum punktum: KV421, KV421C, KV615 og KV616 (stikutoppurinn er 1.30 m yfir jörð). Landmælingarnar 1982 eru skráðar í mælibækurnar: Fljótsdalsheiði I og Fljótsdalsheiði II, en auk þess eru þær varðveittar á disklingum og teikningum á Orkustofnun.

HNITALISTAR OG STAÐSETNINGARKORT

Hnitalistarnir eru skrár yfir niðurstöður mælinganna og greinast þeir í hluta eftir svæðum. Í listunum yfir cobraholurnar eru auk hnitanna upplýsingar um dýpi holanna og athugasemdir, sem gerðar eru, þegar hætt er að bora.

Punktarnir við Gilsárvötn eru teiknaðir inn á kort í mælikvarða 1:20000, en aðrir punktar á kortablöð í mælikvarða 1:5000, sem síðan eru minnkuð í mælikvarðann 1:10000. Nokkrum punktum er bætt inn á teikningar frá árinu 1981.

FYRIRSÖGN HNITALISTA

			BLS.	NÚMER TEIKNINGAR
Eyjabakkar	kjarnahola	EB7	01	81.02.0091/19
- - -	borroholur	EC45-53	01	83.02.0213/01
Eyjabakka-	kjarnahola	HF1	02	81.02.0091/20
skurður	hljóðhr.m.	JS202	02	81.02.0091/21
Sauðárveita	cobraholur	GV og KV	03	83.02.0213/02-05
Gilsárvötn			06	83.02.0213/06
Stöðvar			09	Ekki teiknað.



ORKUSTOFNUN

VATNSORKUDEILD

83.02.14 IPM

EYJABAKKAR

HNI TALISTI

Hnitakerfi: Lambert

BLAD 01

X-hnit (m)	Y-hnit (m)	Hæd (m)	Nafn punkts	Ath
380113.8	481767.8	663.5	EB7	Kjarnahola
378023.2	480421.3	643.8	EC45	Borraholur
377992.9	480472.6	644.0	EC46	
377963.3	480514.2	643.3	EC47	
378041.5	480377.0	643.8	EC48	
378065.1	480329.6	643.8	EC49	
377948.0	480350.7	643.3	EC50	
377981.8	480386.4	643.5	EC51	
378059.7	480452.0	643.3	EC52	
378101.6	480486.7	642.9	EC53	

ORKUSTOFNUN

VATNSORKUDEILD

83.02.14 IPM

EYJABAKKASKURÐUR

HNITALISTI

Hnitakerfi: Lambert

BLAÐ 02

X-hnit (m)	Y-hnit (m)	H&d (m)	Nafn punkts	Ath
379058.2	484406.3	658.3	HF1	Kjarnahola
379969.0	482283.7	653.7	JS202A	Hljodhradamslins
379886.3	482318.1	651.9	JS202B	

ORKUSTOFNUN

VATNSORKUDEILD

83.02.14 IPM

SAUDARVEITA

COBRABORUN

FLJOTSIALSHEIDI 1982

BLAD 03

Hnitakerfi: Lambert		Hæd yfir- bords (m)	Nafn punkts	Dypt holu (m)	Rorad nidur i hæd (m)	Athugasemd gerd Pesar hatt var ad bora
X-hnit (m)	Y-hnit (m)					
371914.6	473032.6	745.7	GV322	1.40	744.3	HEGGUR
371969.4	473023.5	741.5	GV323	0.40	741.0	HEGGUR
372845.0	473096.7	734.0	GV419	1.40	732.6	HEGGUR
371736.3	473117.1	744.4	GV420	1.20	743.2	HEGGUR
371830.8	473072.6	746.1	GV421	1.20	744.9	HEGGUR
371927.4	473080.5	744.3	GV422	1.00	743.3	HEGGUR
372011.7	473495.6	741.3	GV508	1.10	740.2	HEGGUR
372093.7	473552.8	737.1	GV509	1.70	735.4	HEGGUR
372179.2	473613.1	737.6	GV510	1.20	736.4	HEGGUR
372206.5	473631.4	735.7	GV510A	1.00	734.7	HEGGUR
372263.8	473672.8	739.7	GV511	1.60	738.1	HEGGUR
372521.9	473203.6	736.3	GV515	1.80	734.5	HEGGUR
372619.4	473179.9	738.2	GV516	2.00	736.2	HEGGUR
372721.6	473155.5	737.5	GV517	1.80	735.7	STOFF
372798.4	473137.3	736.0	GV518	1.00	735.0	STOFF
371743.2	473141.7	744.2	GV520	3.00	741.2	STOFF
371840.3	473133.2	746.8	GV521	1.80	745.0	HEGGUR
371939.8	473125.2	746.0	GV522	1.60	744.4	HEGGUR
372039.5	473137.3	740.2	GV523	1.00	739.2	HEGGUR
371622.0	473195.1	749.5	GV530	1.20	748.3	HEGGUR
371683.5	473202.2	745.1	GV531	1.60	743.5	HEGGUR
371684.4	473226.7	744.4	GV531H	1.80	742.6	HEGGUR
371682.8	473178.4	745.0	GV531V	1.80	743.2	STOFF
371731.6	473207.8	743.7	GV532	1.60	742.1	HEGGUR
371733.2	473231.0	743.6	GV532H	4.00	739.6	HEGGUR
371729.4	473183.2	743.6	GV532V	2.20	741.4	HEGGUR
371801.3	473215.3	749.6	GV533	0.80	748.8	HEGGUR
372178.5	473664.1	735.7	GV610A	1.60	734.1	HEGGUR
372213.1	473689.5	741.4	GV611	1.00	740.4	HEGGUR
372523.7	473260.2	736.1	GV615	1.45	731.7	HEGGUR
372628.7	473241.8	737.0	GV616	1.00	736.0	HEGGUR
372730.6	473231.9	736.8	GV617	1.80	735.0	HEGGUR
371992.0	473620.9	740.8	GV708	1.40	739.4	HEGGUR
372071.9	473650.0	737.0	GV709	1.40	735.6	HEGGUR
372120.9	473676.2	737.1	GV710	1.00	736.1	HEGGUR
372150.4	473705.0	735.7	GV710A	1.80	733.9	HEGGUR
372173.7	473728.8	742.2	GV711	1.10	741.1	FAST
372004.9	473697.7	740.8	GV809	0.60	740.2	HEGGUR
372042.3	473751.6	735.6	GV810	1.20	734.4	HEGGUR
372019.9	473764.9	735.9	GV810H	0.80	735.1	HEGGUR
372062.5	473739.8	735.4	GV810V	1.00	734.4	HEGGUR
372093.2	473818.9	745.1	GV811	1.00	744.1	HEGGUR
372352.0	473903.9	737.7	GV812	1.90	735.8	HEGGUR
372404.2	473905.9	738.4	GV813	1.80	736.6	HEGGUR

ORKUSTOFNUN

VATNSORKUDEILD

83.02.14 IPM

COBRABORUN

FLJOTSDALSHEIÐI 1982

BLAD 04

SAUBARVEITA

Hnitakerfi: Lambert		Hæð yfir- borðs (m)	Nafn punkts	Dælt holu (m)	Borð nidur i hæð (m)	Athugasemd gerð Pesar hætt var áð bora
X-hnit (m)	Y-hnit (m)					
374582.7	473368.3	697.3	KV305	3.20	694.0	HEGGUR
375205.9	473312.3	700.7	KV313	5.00	695.7	HEGGUR
374284.9	473395.3	693.2	KV402	0.80	692.4	HEGGUR
374356.7	473394.7	690.6	KV402B	2.10	688.5	HEGGUR
374392.9	473414.8	696.8	KV403	1.00	695.8	HEGGUR
374592.5	473402.5	697.4	KV405	1.10	696.3	STOPP
374923.9	473413.5	701.9	KV408	1.00	700.9	HEGGUR
374991.4	473443.1	703.6	KV409	1.00	702.6	HEGGUR
375045.8	473499.8	704.7	KV409A	1.30	703.4	HEGGUR
375181.0	473314.7	700.8	KV413	4.90	695.9	FAST
375250.1	473376.2	706.2	KV414	1.60	704.6	HEGGUR
375268.2	473420.3	709.6	KV414A	1.00	708.6	STOPP
375607.1	473886.1	707.8	KV418	2.40	705.4	HEGGUR
375670.3	473965.1	705.1	KV419	1.60	703.5	HEGGUR
375722.9	474045.1	704.8	KV420	2.40	702.5	STOPP
375802.6	474109.2	705.0	KV421	1.80	703.2	HEGGUR
376007.1	474318.6	704.8	KV421C	3.00	701.8	HEGGUR
376023.5	474512.2	704.9	KV423	1.00	703.9	HEGGUR
374111.7	473491.2	705.3	KV500	1.00	704.3	HEGGUR
374205.2	473439.0	698.3	KV501	1.20	697.1	HEGGUR
374302.0	473439.3	692.0	KV502	0.60	691.4	HEGGUR
374334.1	473433.8	690.0	KV502A	1.40	688.6	HEGGUR
374351.4	473435.2	690.2	KV502B	0.40	689.8	HEGGUR
374391.1	473439.5	698.9	KV503	1.30	697.6	HEGGUR
374495.8	473439.8	704.5	KV504	0.20	704.3	HEGGUR
374603.7	473440.2	697.8	KV505	1.60	696.2	HEGGUR
374708.2	473440.3	701.7	KV506	1.00	700.7	HEGGUR
374812.5	473440.6	704.6	KV507	1.00	703.6	HEGGUR
374920.7	473441.2	701.4	KV508	1.20	700.2	HEGGUR
374969.1	473492.5	701.9	KV509	0.80	701.1	HEGGUR
374996.0	473527.7	705.3	KV509A	1.40	703.9	HEGGUR
374968.9	473279.1	701.9	KV511	1.80	700.1	HEGGUR
375067.9	473268.5	701.4	KV512	1.40	700.0	HEGGUR
375157.7	473316.9	701.3	KV513	4.60	696.7	FAST
375227.2	473388.3	704.7	KV514	1.00	703.7	HEGGUR
375244.4	473435.4	708.5	KV514A	1.80	706.7	HEGGUR
375290.4	473453.0	708.4	KV515	1.60	706.8	HEGGUR
375481.1	473728.2	708.1	KV516	2.00	706.1	HEGGUR
375528.7	473819.3	707.8	KV517	1.60	706.2	STOPP
375587.2	473899.8	707.2	KV518	1.60	705.5	HEGGUR
375647.6	473980.2	705.7	KV519	2.70	703.0	FAST
375701.0	474057.8	704.5	KV520	2.80	701.7	FAST
375770.1	474143.3	705.2	KV521	1.80	703.4	HEGGUR
376005.7	474431.7	704.6	KV522	3.80	700.8	HEGGUR
376002.5	474525.7	702.3	KV523	2.00	700.3	HEGGUR
376105.9	474547.8	700.7	KV524	0.60	700.1	HEGGUR
374205.5	473464.9	699.2	KV601	1.60	697.6	HEGGUR
374303.8	473484.3	691.5	KV602	0.80	690.8	HEGGUR
374352.6	473489.4	689.7	KV602B	0.50	689.2	
374391.1	473464.1	697.5	KV603	2.40	695.2	HEGGUR

ORKUSTOFNUN

VATNSORKUDEILD

83.02.14 IPH

SAUÐARVEITA

COBRABORUN

FLJOTSÐALSHEIDI 1982

BLAÐ 05

Hnitakerfi: Lambert		Hæð yfir- borðs (m)	Nafn punkts	Dýpt holu (m)	Borad niður í hæð (m)	Athugasemd gerd Þegar hætt var að bora
X-hnit (m)	Y-hnit (m)					
374493.9	473464.3	705.1	KV604	0.80	704.3	HEGGUR
374693.9	473467.4	702.8	KV606	1.00	701.8	HEGGUR
374819.2	473467.8	704.5	KV607	1.20	703.3	HEGGUR
375203.0	473401.0	707.9	KV614	1.00	706.9	HEGGUR
375230.6	473451.0	709.7	KV614A	0.60	709.0	HEGGUR
375266.1	473468.5	708.3	KV615	1.60	706.7	HEGGUR
375455.0	473768.3	708.1	KV616	1.20	706.9	FAST
375511.6	473833.7	706.9	KV617	1.20	705.7	HEGGUR
375568.2	473913.3	706.9	KV618	1.20	705.7	HEGGUR
375627.4	473993.8	705.6	KV619	2.20	703.4	HEGGUR
375679.2	474069.2	704.9	KV620	3.50	701.4	FAST
375728.5	474187.1	704.9	KV621	2.50	702.4	STOPP
375846.4	474214.5	704.8	KV621A	3.90	700.9	HEGGUR
375920.8	474266.6	704.9	KV621B	2.20	702.7	HEGGUR
375973.4	474344.4	704.5	KV621C	5.80	698.7	HEGGUR
376049.0	474554.7	701.4	KV624	2.20	699.2	HEGGUR
374205.2	473489.5	699.7	KV701	1.40	698.3	HEGGUR
375240.7	473484.8	708.5	KV715	1.60	706.9	HEGGUR
375427.7	473810.3	707.8	KV716	1.50	706.3	HEGGUR
375493.6	473848.7	707.1	KV717	1.20	705.9	HEGGUR

ORKUSTOFNUN

VATNSORKUDEILD
83.02.14 IPM

GILSARVÖTN MIDHEIÐARHALS

HNITALEISTI

Hnitakerfi: Lambert
STIFLUST, BLAÐ 06

X-hnit (m)	Y-hnit (m)	Hæð (m)	Nafn punkts
367559.6	509404.4	635.2	1
367615.5	509408.9	635.1	2
367663.2	509419.8	635.0	3
367718.0	509433.0	634.6	4
367772.5	509442.5	633.6	5
367827.7	509454.0	632.6	6
367873.3	509373.9	632.7	7
367819.6	509363.2	633.5	8
367763.2	509348.9	634.3	9
367705.6	509341.8	634.7	10
367624.6	509329.0	633.9	11
367660.3	509325.3	634.0	12
367574.5	509323.6	634.8	13
367502.6	509304.6	635.3	14
367453.7	509462.3	637.4	15
367502.2	509484.9	636.6	16
367548.1	509508.3	635.5	17
367590.3	509532.1	635.0	18
367639.2	509565.3	635.0	19
367693.2	509594.7	634.4	20
367735.3	509626.4	633.5	21
367669.8	509203.8	633.5	22
367720.6	509234.9	634.0	23
367770.1	509266.2	634.3	24
367819.1	509301.1	634.1	25
367872.7	509337.3	633.1	26
367921.9	509367.9	632.5	27
367967.1	509392.3	631.8	28
368027.2	509318.0	631.8	29
367985.9	509284.9	632.8	30
367945.6	509254.7	632.8	31
367897.6	509220.8	633.2	32
367854.8	509185.5	634.2	33
367808.5	509147.2	633.4	34
367765.8	509116.4	633.2	35
367735.7	509091.6	632.5	36
367682.7	509068.7	632.5	37
367669.8	509023.0	632.5	38
367770.3	509006.3	632.7	39
367821.0	509038.8	634.5	40
367869.5	509070.7	634.4	41
367915.2	509101.7	634.1	42
367965.0	509137.3	633.8	43
368016.9	509171.3	633.4	44
368073.1	509202.9	632.6	45
368125.1	509235.9	632.1	46
368170.9	509262.8	630.9	47
368233.8	509188.8	630.8	48
368183.4	509154.9	632.3	49
368140.9	509116.5	632.9	50

ORKUSTOFNUN

VATNSORKUDEILD

83.02.14 IPM

HNITALISTI

Hnitakerfi: Lambert

GILSARVÖTN MIDHEIDARHALS STIFLUST. BLAD 07

X-hnit (m)	Y-hnit (m)	Hæð (m)	Nafn punkts
368104.3	509082.3	633.6	51
368062.3	509054.2	633.9	52
368031.8	509027.5	633.9	53
368000.4	509016.5	633.9	54
367959.5	509024.3	633.9	55
367920.2	509019.9	633.9	56
367924.1	508992.1	634.0	57
367906.3	508972.7	634.1	58
367864.6	508929.1	634.0	59
367817.9	508878.3	632.7	60
367817.9	508849.5	632.5	61
367823.1	508764.0	633.2	62
367878.2	508798.2	634.2	63
367935.1	508827.4	634.5	64
367982.0	508861.3	634.4	65
368032.2	508900.8	633.9	66
368086.2	508942.5	634.2	67
368142.2	508976.6	633.6	68
368194.9	509007.6	633.5	69
368247.7	509039.9	632.6	70
368295.1	509068.3	632.7	71
368333.7	509091.2	631.9	72
368390.3	509001.5	631.1	73
368340.9	508956.8	631.7	74
368307.0	508930.5	632.3	75
368263.9	508893.6	632.6	76
368227.3	508849.3	633.8	77
368198.3	508799.3	634.1	78
368158.2	508764.9	634.3	79
368117.7	508728.5	634.6	80
368069.3	508703.7	634.5	81
368036.6	508656.7	635.0	82
367997.8	508619.1	634.8	83
367963.9	508570.9	634.2	84
367999.7	508482.9	635.2	85
368053.3	508514.0	634.8	86
368081.0	508523.1	634.8	87
368131.8	508551.9	635.1	88
368180.6	508581.9	635.1	89
368225.9	508617.2	635.3	90
368280.1	508649.6	635.3	91
368332.8	508681.2	634.2	92
368382.4	508711.3	633.8	93
368432.1	508739.0	633.0	94
368499.5	508676.2	633.4	95
368463.7	508629.8	633.9	96
368430.1	508584.9	634.7	97
368398.1	508538.6	635.8	98
368356.5	508495.6	636.2	99
368317.3	508455.6	636.3	100

ORKUSTOFNUN

VATNSORKUDEILD

83.02.14 IPM

GILSARVÖTN NIÐHEIÐARHALS

HNITALISTI

Hnitakerfi: Lambert

STIFLUST. BLAÐ 08

X-hnit (m)	Y-hnit (m)	Hæð (m)	Nafn punkts
368284.2	508423.1	635.8	101
368348.1	508360.5	636.4	102
368391.9	508397.3	636.5	103
368465.1	508426.5	636.8	104
368513.7	508458.9	635.2	105
368555.6	508482.7	634.8	106
368604.0	508512.3	634.8	107
368657.2	508545.6	634.4	108
368732.2	508499.3	635.6	109
368711.0	508462.1	636.0	110
368694.8	508436.3	636.0	111
368650.8	508399.2	636.3	112
368606.8	508364.7	636.4	113
368577.2	508330.8	636.3	114
368544.6	508308.4	636.5	115
368502.5	508271.8	636.7	116
368482.2	508238.9	636.6	117
368535.5	508145.2	638.9	118
368582.3	508175.3	637.8	119
368632.7	508211.2	637.8	120
368676.3	508242.4	637.5	121
368721.8	508275.1	637.5	122
368768.6	508310.3	636.6	123
368813.2	508340.4	636.0	124
368859.3	508377.3	635.8	125

ORKUSTOFNUN

VATNSORKUDEILD

83.02.14 IPM

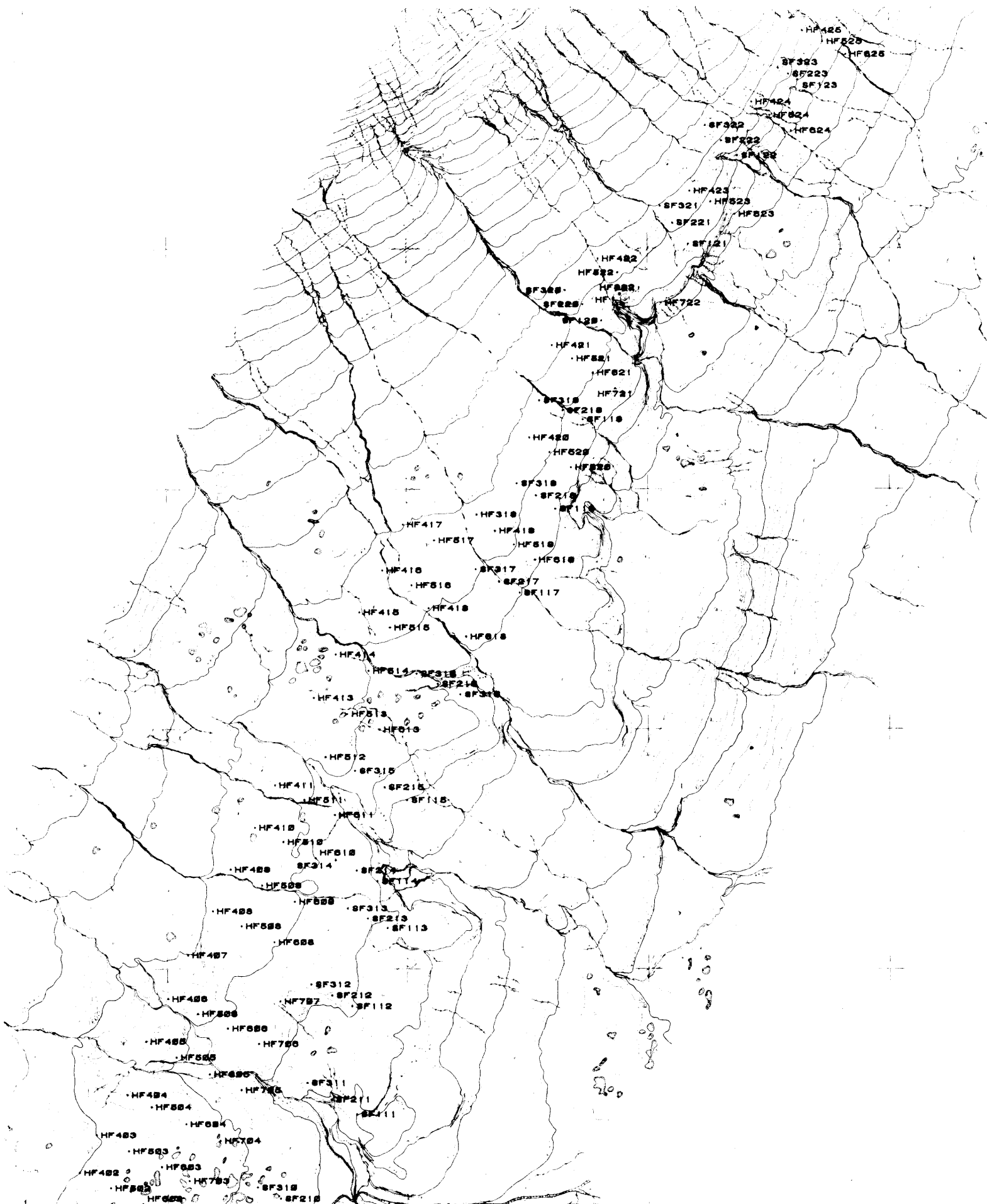
STÖÐVAR

HNITALISTI

Hnitakerfi: Lambert

BLAD 09

X-hnit (m)	Y-hnit (m)	Hæð (m)	Nafn Punkts	Ath	Numer punkts
377624.3	474752.2	726.3	MH		5455
376151.1	479966.5	689.4	EYB		5801
380820.9	479645.1	720.8	SNF		5802
379047.6	484395.6	658.7	HAF		5804
374016.9	485423.5	661.9	RAG		5806
366135.6	510105.5	636.1	5646		5646
375557.4	473245.8	752.3	7009		7009
360480.5	506402.9	695.2	THVR		
373101.5	473250.3	750.4	N69		
378042.5	480948.8	656.6	EB3		
380033.1	482272.7	655.6	AG8		
380463.2	481753.6	675.3	XX5		
374495.8	473439.8	704.5	KV504		
372283.5	473187.6	740.6	ST1		
375690.4	473773.8	723.0	ST2		
375180.0	473448.2	710.8	ST3		
375823.5	474037.5	717.0	ST4		
366870.2	509760.4	642.2	G1		
367484.3	509074.0	637.3	G2		
371801.3	473215.3	749.6	GV533		



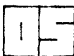
2349

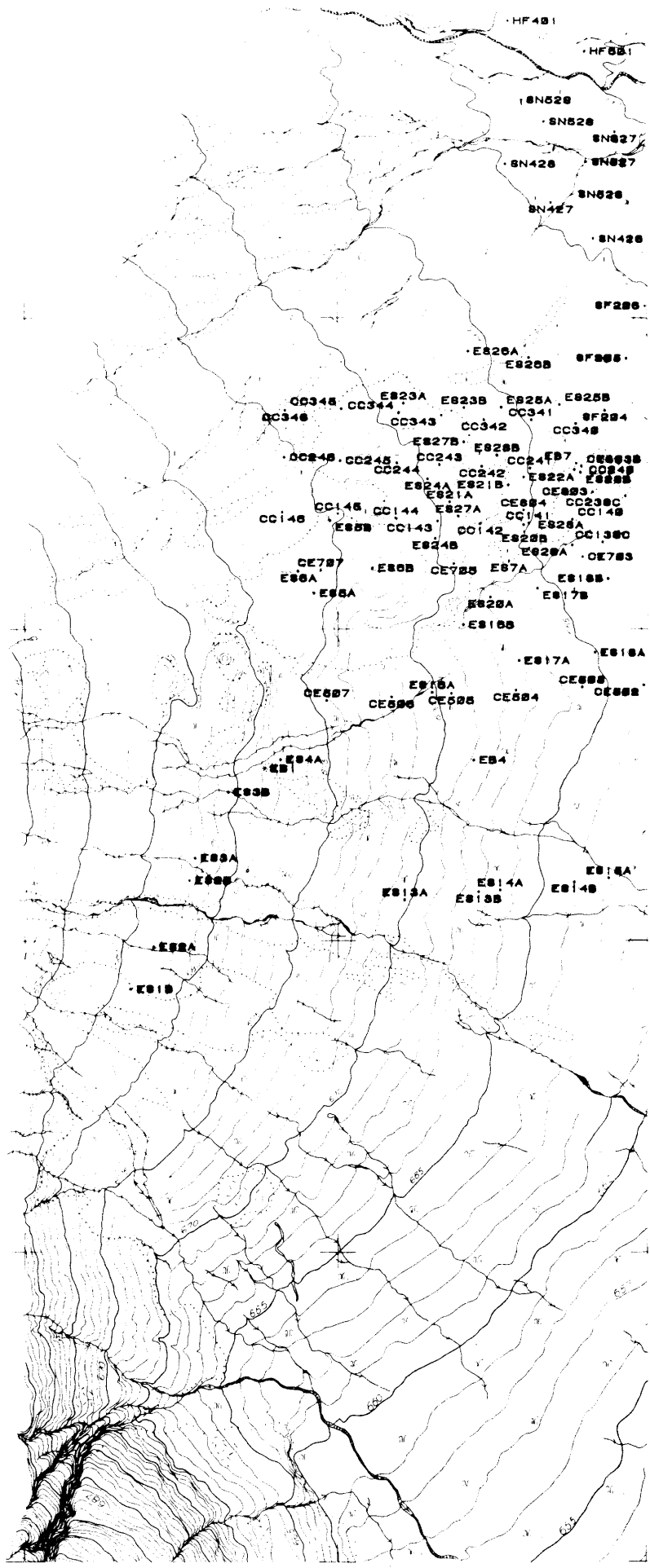
33	23	13	03
32	22	12	02
31	21	11	01
30	20	10	00

FORVERK H.F.
 myndmalt kort d.nr.418.
 Myndþríhyrningamalt í W-A7 og
 myndmalt í W-B8 1980.
 Myndmálkvarói 1:13.000.
 Myndir teknar á vegum
 Landmál. Ísl.18.8.1976.
 Myndavél Wild RC 10 c=152,10

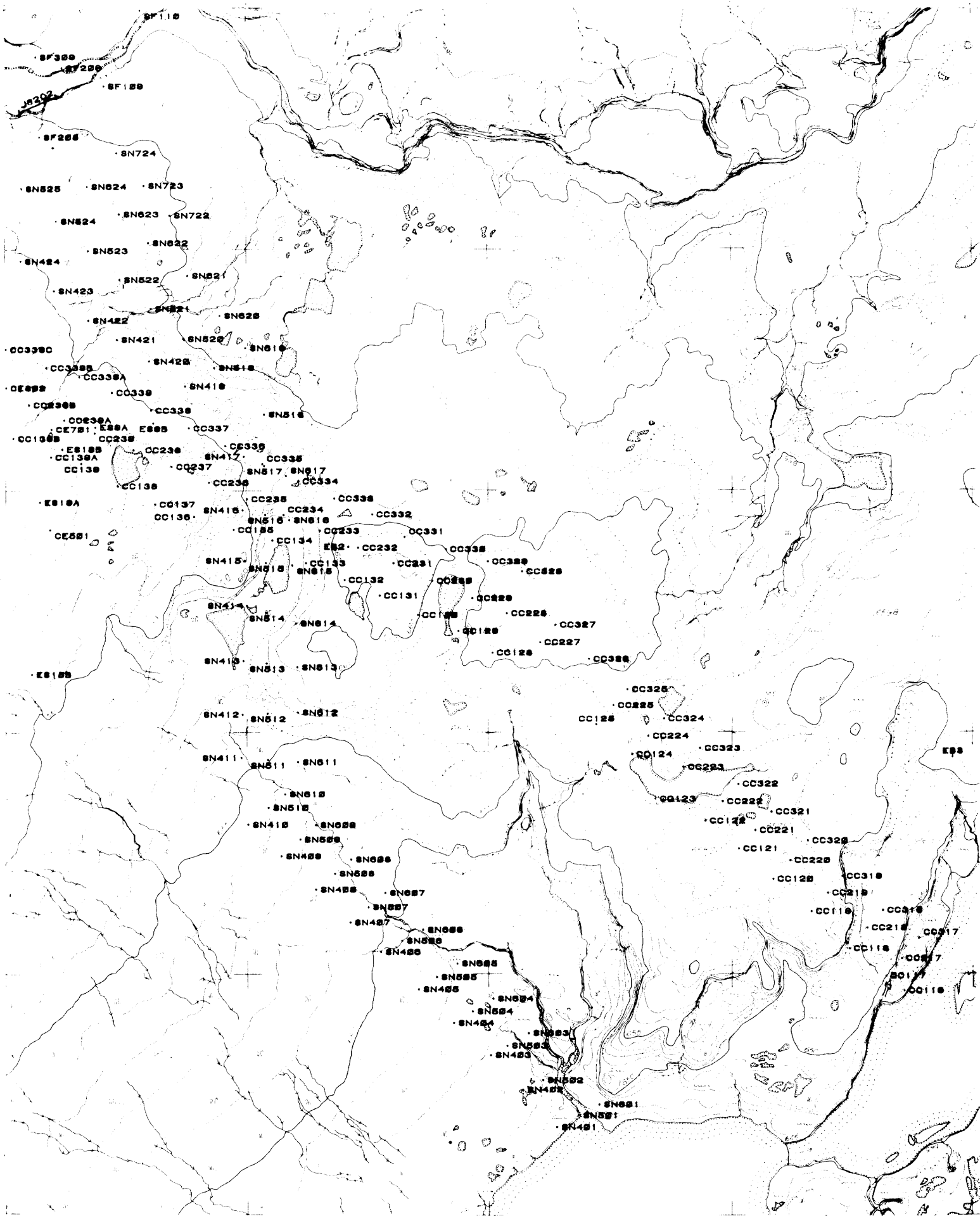
1:5000



 VOD-LM-760 GT-
 81.02.0091/19
 STADSETNINGARKORT FLJÓTSDALSHÉIDI 188C



5000
 0 100 200 300 400 500



ORKUSTOFNUN Landmælingar		
1:5000	2348	20
1m	Hafursá	
Mált OS 1979	Myndmált: FORVERK 1980	
Hnitkerfi Landsnet	Hæðakerfi OS NA-land	

2349			
33	23	13	03
32	22	12	02
31	21	11	01
30	20	10	00

FORVERK H.F.
 myndmált kort d.nr.418.
 Myndþríhyrningamált í W-A7 og
 myndmált í W-B8 1980.
 Myndmálkvarði 1:13.000.
 Myndir teknar á vegum
 Landmæl. Ísl.18.8.1976.
 Myndavál W11d RC 10 CE152.10

1:50

VOD-LM-760 GTH
 81.02.0091/21

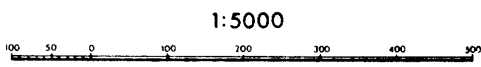
STADRETNINGARKORT F.L. ÖSTRAL-SÍÐI 1980




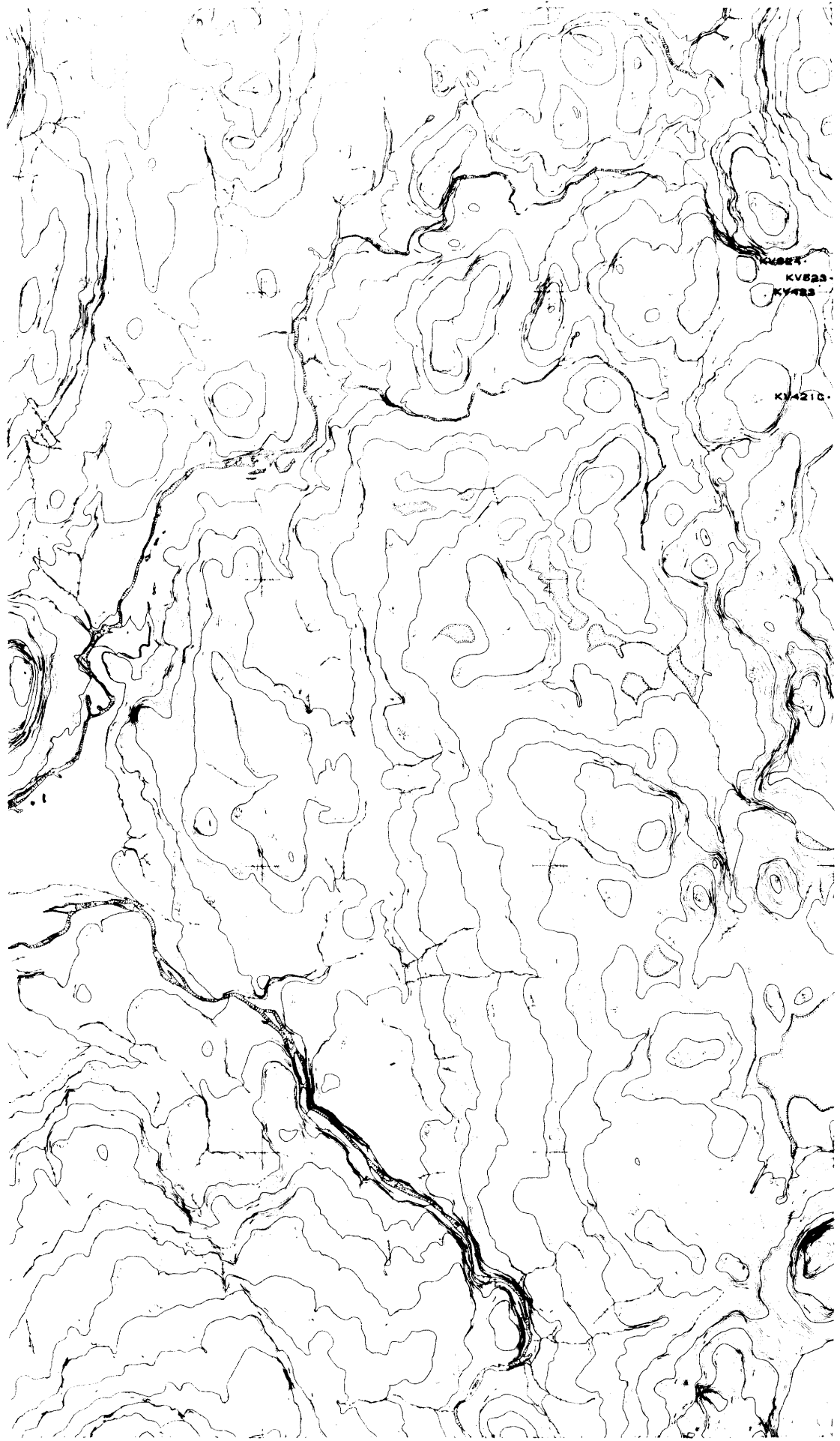
Myndmælingar
20
FORVERK 1980
5 NA-land

	2349				
2448	33	23	13	03	
	32	22	12	02	
	31	21	11	01	2248
	30	20	10	00	2347

FORVERK H.F.
 myndmalt kort d.nr.418.
 Myndþríhyrningamalt í W-A7 og
 myndmalt í W-B8 1980.
 Myndmælikvarði 1:13.000.
 Myndir teknar á vegum
 Landmæl. Ísl.18.8.1976.
 Myndavél Wild RC 10 c=152,10




 VOD-LM-760 IPM
 83.02.0213/01 T
 STADSETNINGARKORT FLJOTSÐALSHÉIÐI 1982




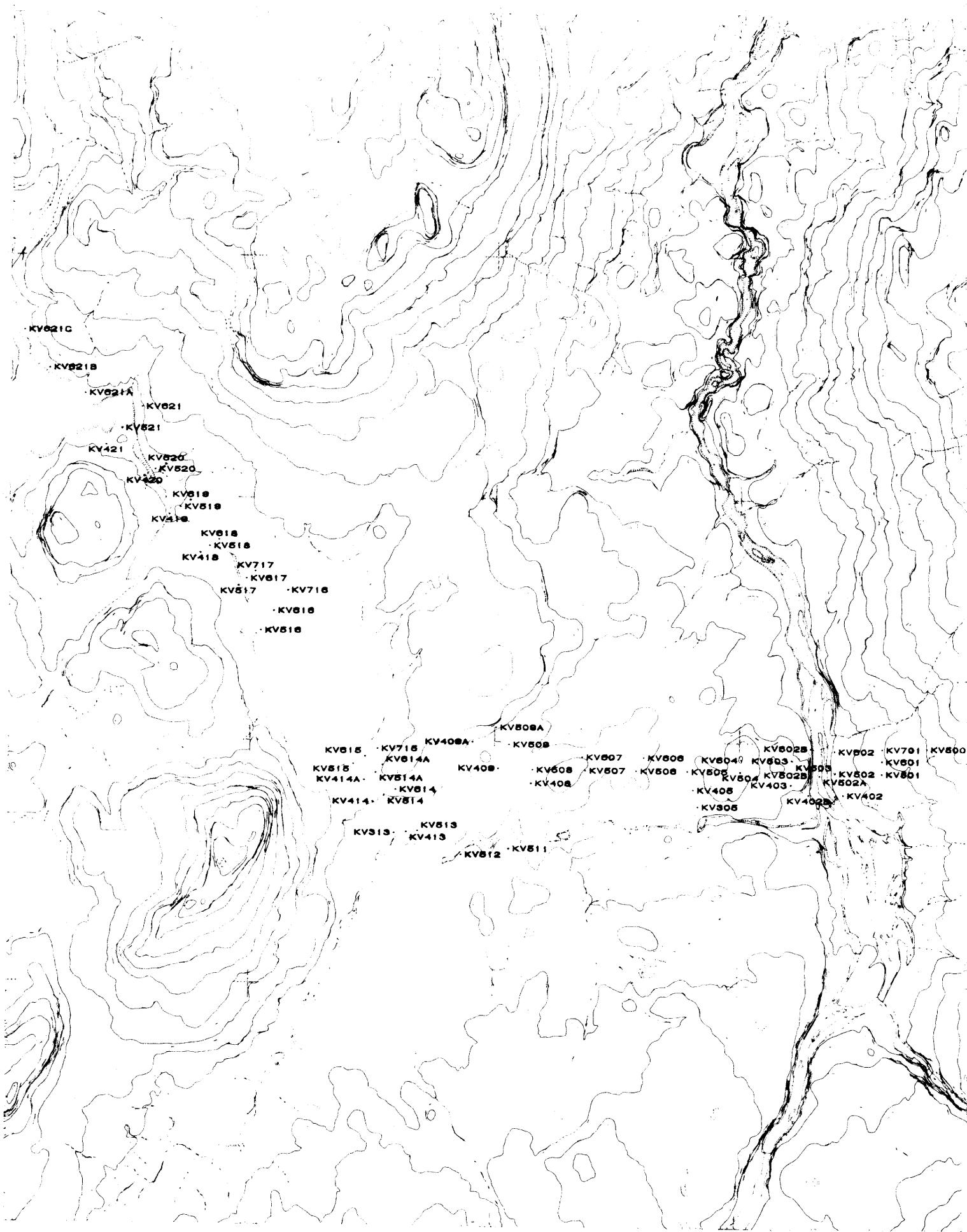
KV824
KV823
KV822

KV4210

5000



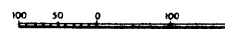
 VOD-LM-760 I M
83.02.0213/02 T
STADSETNINGSKORT FLJOTSDALSHETDT 1982




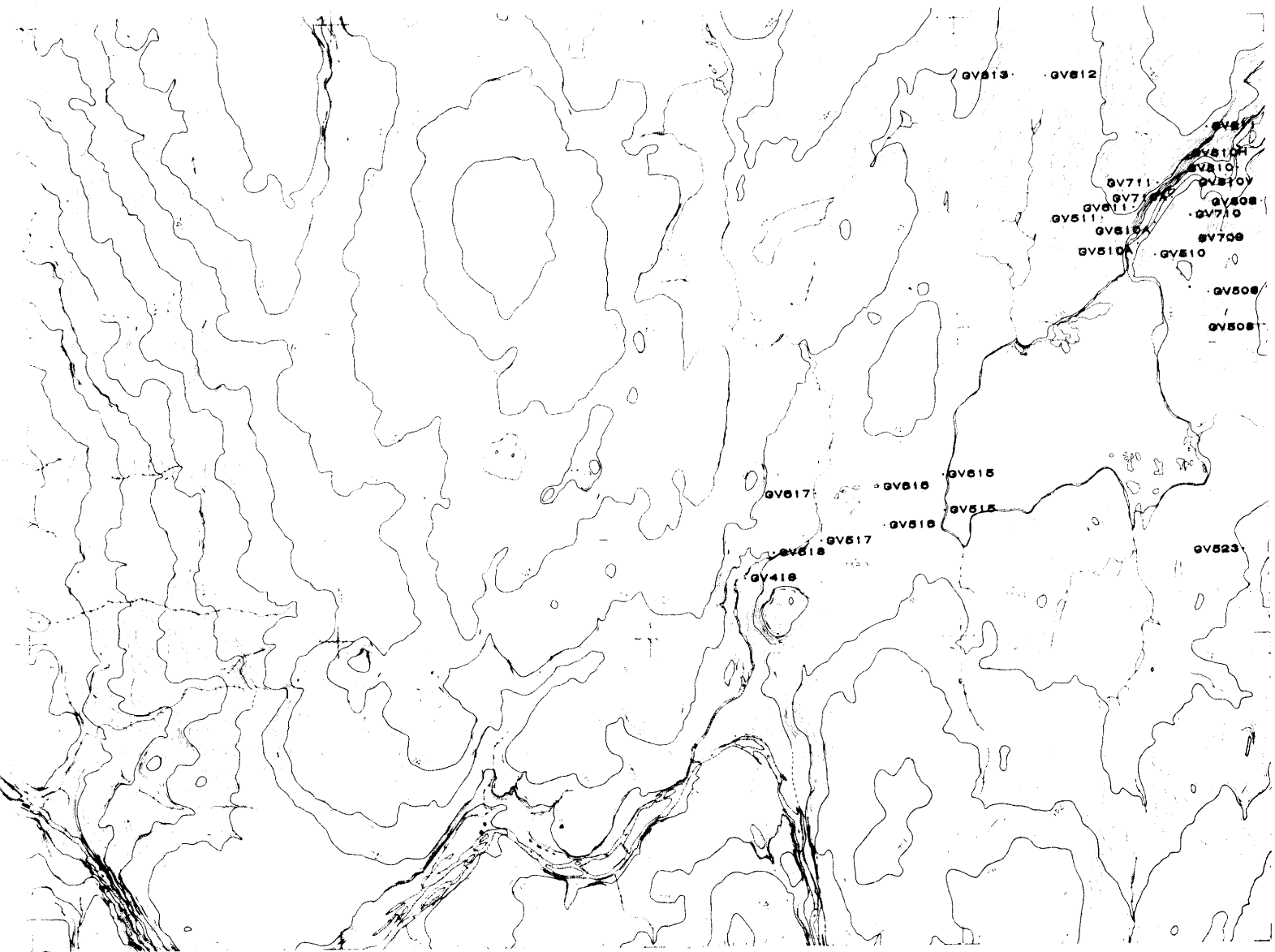
ORKUSTOFNUN		Landmælingar
1:5000	2347	11
1 m	Eyjabakkur	
Mælt OS 1980	Myndmælt FORVERK 1981	
Hnitke frá Landsnet	Hæðakerfi OS NA-land	

2348			
33	23	13	03
32	22	12	02
31	21	11	01
30	20	10	00
2346			

FORVERK H.F.
 myndmælt kort d.nr.418.
 Myndþrýgningarmælt í W-A7 og
 myndmælt í W-B8 1981.
 Myndmælikvarði 1:13.000.
 Myndir teknar á vegum
 Landmæl. Ísl. 27.8.1980.
 Myndavél Wild RC 10 c=152,10




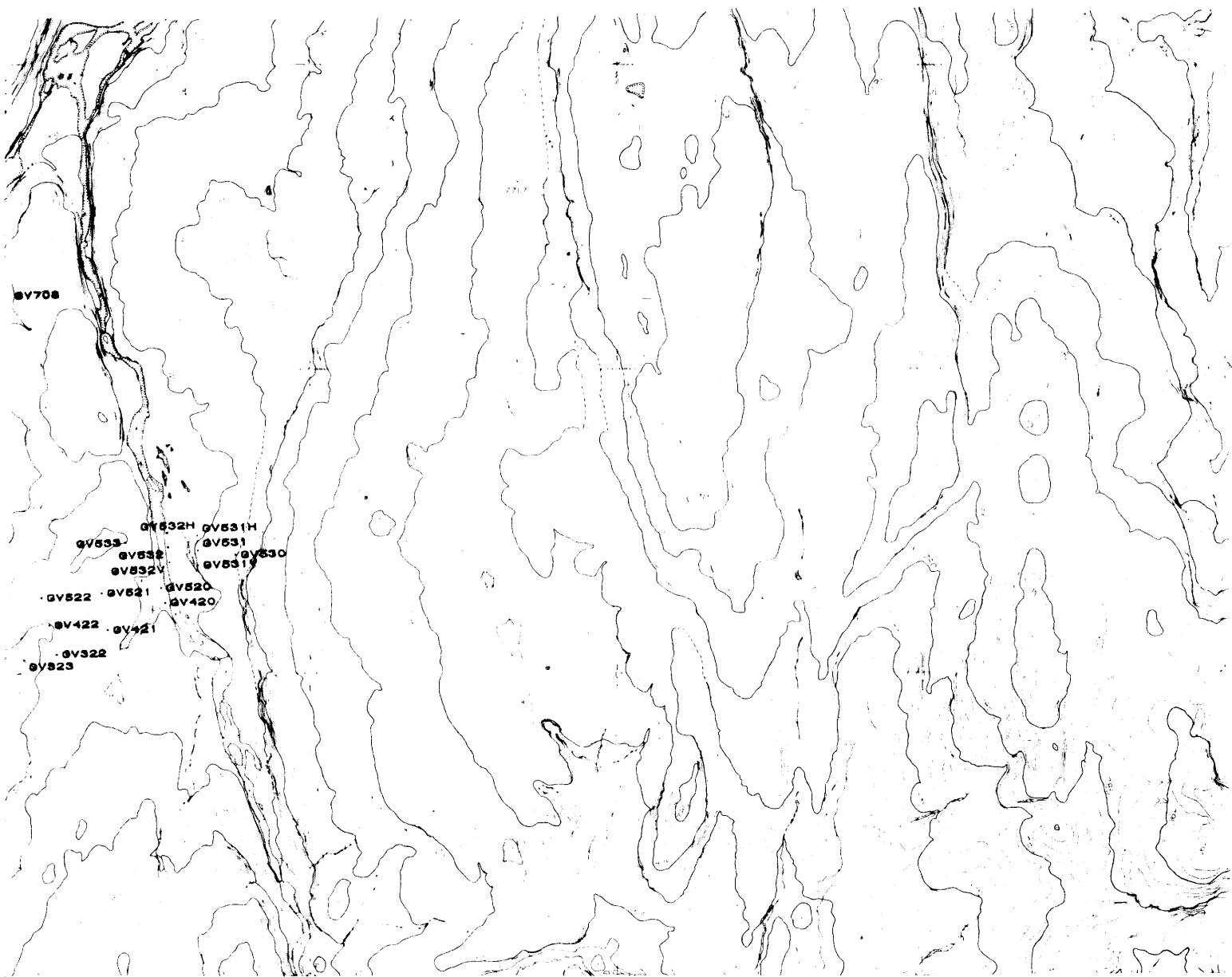
 VOD-LM-760 IPM
 83.02.0213/03 T
 STADSETNINGARKORT FLJÓTSDALSHÉIÐI 106



5000

200 300 400 500

 VOD-LM-760 IPM
83.02.0213/04 T
STADSETNINGARKORT FLJOTSDALSHÉIDI 1982



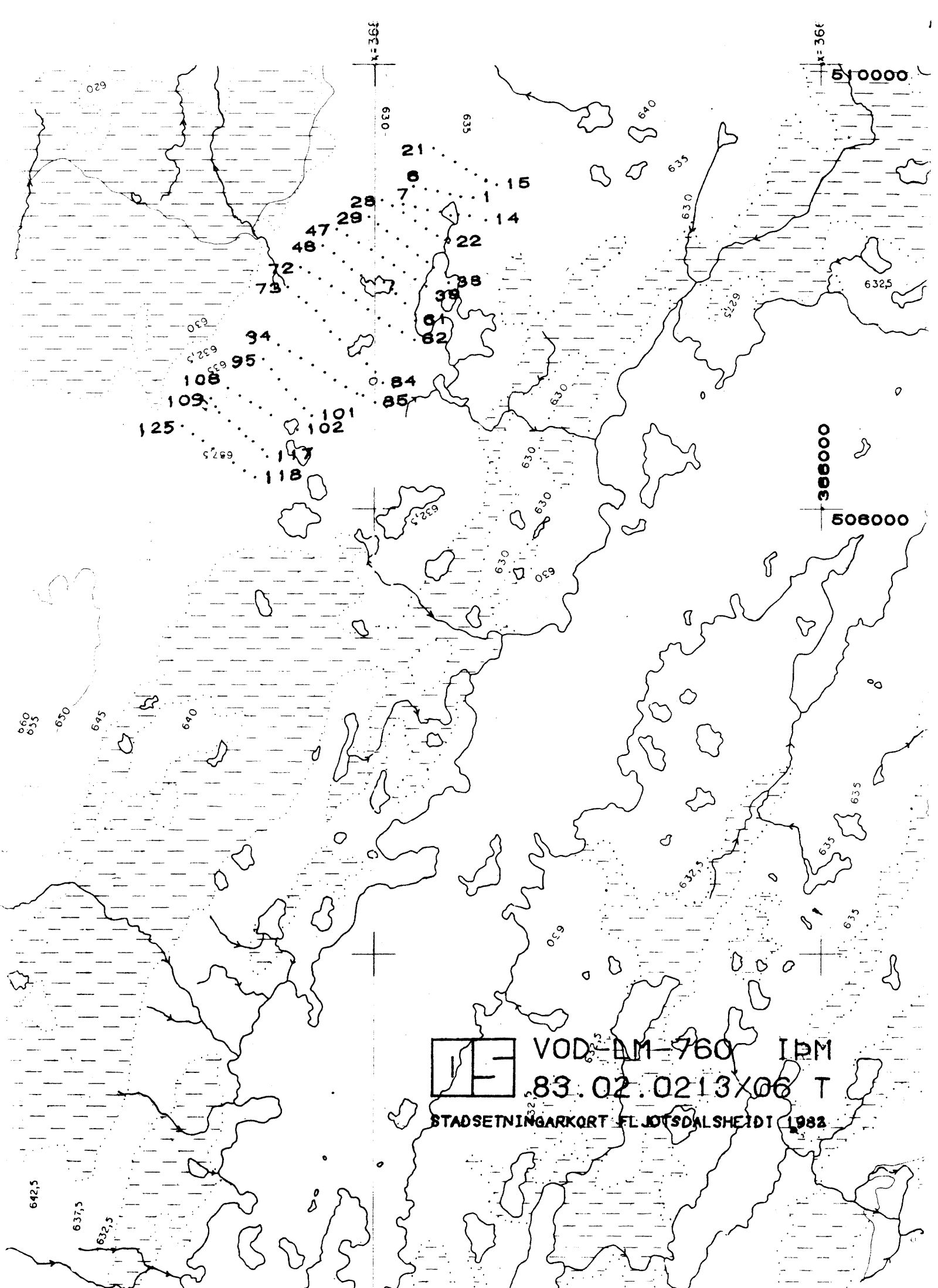
ORKUSTOFNUN Landmælingar		
1:5000	2347	01
1 m	Eyjabakkur	
Mælt: O, 1980	Myndmæll: FORVERK 1981	
Hnitkerfi: Landsnet	Hæðakerfi: OS NA-land	

	2348				
	33	23	13	03	
2447	32	22	12	02	2247
	31	21	11	01	
	30	20	10	00	
	2346				

FORVERK H.F.
 myndmælt kort d.nr.418.
 Myndþríhyrningamælt í W-A7 og
 myndmælt í W-B8 1981.
 Myndmælikvarði 1:13.000.
 Myndir teknar á vegum
 Landmæl. Ísl. 27.8.1980.
 Myndavél Wild RC 10 c=152,10



IF VOD-LM-760 IPM
 83.02.0213/05 T
 STAÐSETNINGARKORT FLJÓSDALSHÉIDI 1982



VOD: AM-760 IPM

83.02.0213X06 T

STADSETNINGARKORT FL JOTSDALSHEIDI 1982