

Short term indicators in October 2005

Prices

The CPI rose by 4.6% in the 12 months to October

The CPI in October 2005 rose by 0.61% from the preceding month (CPI less housing cost rose by 0.48%). Over the last 12 months the CPI rose by 4.6% (CPI less housing cost rose by 1.2%) while the change over the last 3 months is equivalent to an annual inflation of 9.7% (8.3% inflation less housing cost). In Iceland, the HICP rose by 1.6% in September 2005. Over the 12 months to September the HICP in Iceland rose by 1.6% and by 2.5% in the EEA. The building cost index in October rose by 0.09% from the preceding month and rose by 4.2% on October 2004.

Wages

The wage index rose by 6.9% in the 12 months to September

The wage index for the whole economy rose by 0.3% in September 2005 and had then risen by 6.9% over the last 12 months. The corresponding rise in the CPI was 4.7%. Deflated by the CPI, real wages rose by 2.0% over the 12 months to September 2005. The average purchasing power January–September this year is 2.6% over January–September last year.

Labour market in 3rd quarter 2005

Increase in labour force and number of employed, drop in unemployment rate

According to the continuous labour force survey of Statistics Iceland, the labour force totalled 167,000 in 3rd quarter 2005 compared with 162,400 the year before. The number of employed persons rose from 158,100 in 2004, 3rd quarter, to 164,000 in 2005. The labour force participation rate in 3rd quarter 2005 was 83.1% (81.5% the year before); 88.3% for males and 77.7% for females. The unemployment rate in 3rd quarter 2005 was 1.8% (2004: 2.6%); 1.2% for males and 2.4% for females.

Domestic demand

Domestic demand on the increase

Credit card turnover of private households was up by 13.4% in January–September from the year before. The growth in last 12 months is 10.4% compared with the previous 12 months. Debit card turnover was up by 24.4% January–September. The growth in last 12 months is 22.9% compared with the previous 12 months. Altogether domestic debit and credit card turnover by households increased by 17.0% in recent 12 months compared with the previous 12 months. Credit card expenditure by Icelanders abroad increased by 20.3% January–September from the corresponding months the year before. The growth in last 12 months is 19.2%. Total credit and debit card turnover of foreign cards in Iceland increased by 8.0% in January–September 2005 compared with same months in 2004.



New car registrations in January–September increased by 57.8% from the corresponding period the year before. In last 12 months new car registrations were up by 55.4% from the previous 12 months.

Fish catch volume and export prices

Decrease in fish catch The total value of the fish catch in January–September 2005, measured at constant prices, showed a decrease of 2.5% from January–September the year before. The price of catch in Icelandic krónur was 1,7% lower in January–August 2005 than in January–August 2004. Export prices of marine products, measured in Icelandic krónur, were 2.2% lower in January–September 2005 than in January–September 2004. The price of foreign exchange decreased by 9.5% (krónur appreciated) between the periods.

External trade in September

Deficit in external trade in September The balance of trade in September showed a deficit of 12.5 billion as compared with a surplus of 0.2 billion in September 2004. The value of exports January–September was 140.9 billion and the value of imports was 212.6 billion. Exports of goods rose by 3.9% in this period and imports rose by 32.8%. All values are given at fixed rates of exchange of the current year. The main items of increased imports this year are transport equipment, fuel and capital goods.

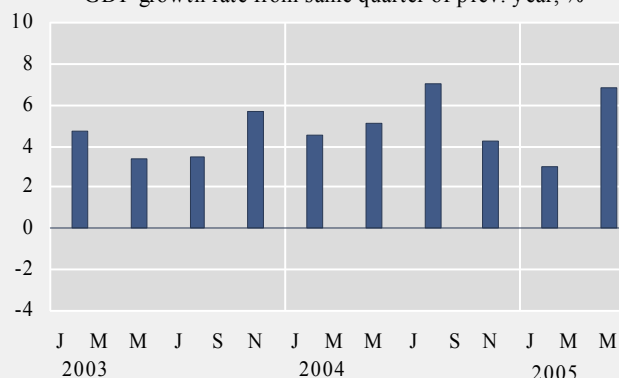
Arrivals at Keflavik International Airport

8.6% growth in arrivals at Keflavik International Airport 599 thousand passengers arrived from abroad at Keflavik International Airport in January–September compared with 552 thousand in January–September 2004. This is a growth of 8.6%. In the twelve months to September 2005 740 thousand passengers arrived at Keflavik International Airport which is a growth of 9.8%.

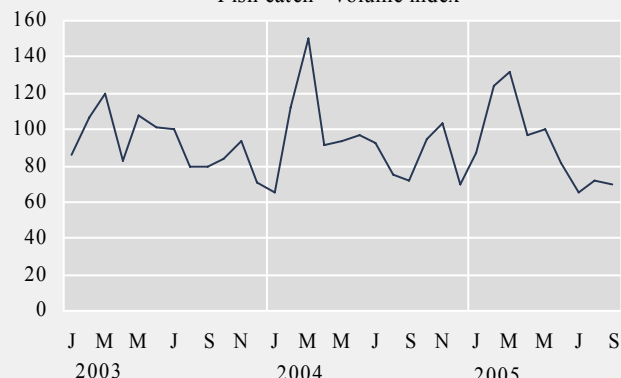
Short term indicators in October 2005

	GDP growth rate	Consumer price index	Consumer price index less housing cost	Harmonised index of consumer prices, Iceland	Harmonised index of consumer prices, EEA	Building cost index	Fish catch, volume index	Aluminium production tonnes
2003	3.6	227.3	222.8	125.2	113.0	286.3	92.6	280,185
2004	6.2	234.6	227.5	128.1	115.3	298.6	93.2	281,038
Oct. 2003	.	229.0	223.7	125.8	113.6	287.8	84.0	22,877
Nov. 2003	2.5	229.3	224.1	126.0	113.7	287.2	94.0	22,033
Dec. 2003	.	230.0	224.7	126.3	114.0	287.8	70.9	22,521
Jan. 2004	.	230.1	224.5	126.1	113.7	288.6	65.7	23,062
Feb. 2004	5.5	229.4	223.5	125.7	113.9	289.5	112.5	21,786
Mar. 2004	.	230.7	224.9	126.6	114.6	292.2	150.0	22,699
Apr. 2004	.	232.0	225.9	127.2	115.0	293.3	91.6	24,249
May 2004	6.4	233.9	227.4	128.2	115.5	299.8	94.1	23,450
Jun. 2004	.	235.7	228.7	128.9	115.5	300.8	97.4	23,411
Jul. 2004	.	234.6	227.7	128.5	115.3	301.7	92.8	21,952
Aug. 2004	8.0	234.6	227.3	128.3	115.5	302.1	75.1	23,748
Sep. 2004	.	235.6	228.2	128.9	115.7	302.3	71.6	24,679
Oct. 2004	.	237.4	229.8	129.5	116.1	303.9	94.6	25,605
Nov. 2004	4.8	237.9	229.8	129.6	116.1	304.8	103.4	23,012
Dec. 2004	.	239.0	230.5	130.0	116.5	304.7	69.3	23,385
Jan. 2005	.	239.2	229.2	129.5	115.9	313.3	87.5	24,150
Feb. 2005	3.0	239.7	228.6	129.3	116.3	313.0	123.9	21,652
Mar. 2005	.	241.5	229.4	129.8	117.0	312.8	132.0	23,225
Apr. 2005	.	242.0	228.3	129.2	117.5	312.8	97.4	22,432
May 2005	6.8	240.7	227.4	128.8	117.7	313.3	100.5	22,832
Jun. 2005	.	242.4	228.2	129.3	117.9	313.4	81.6	21,983
Jul. 2005	.	242.7	227.9	129.1	117.8	312.9	64.8	23,320
Aug. 2005	.	243.2	227.5	128.8	118.1	315.1	71.9	23,627
Sep. 2005	.	246.9	231.4	130.9	118.6	316.3	70.0	23,429
Oct. 2005	.	248.4	232.5	.	.	316.6	.	.

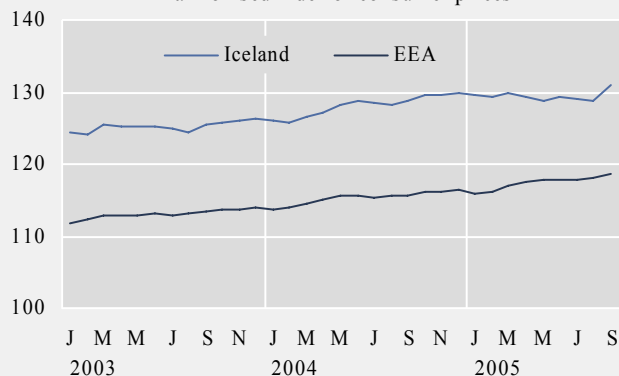
GDP growth rate from same quarter of prev. year, %



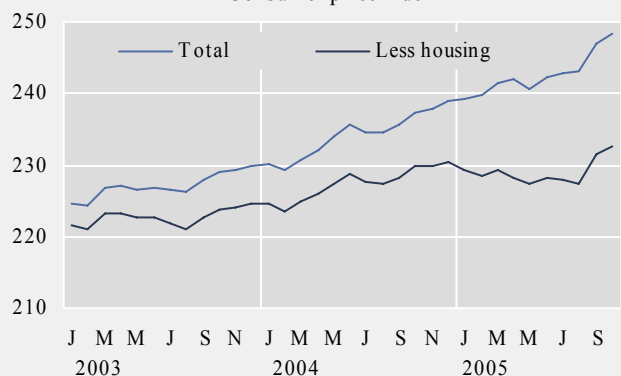
Fish catch - volume index



Harmonised index of consumer prices

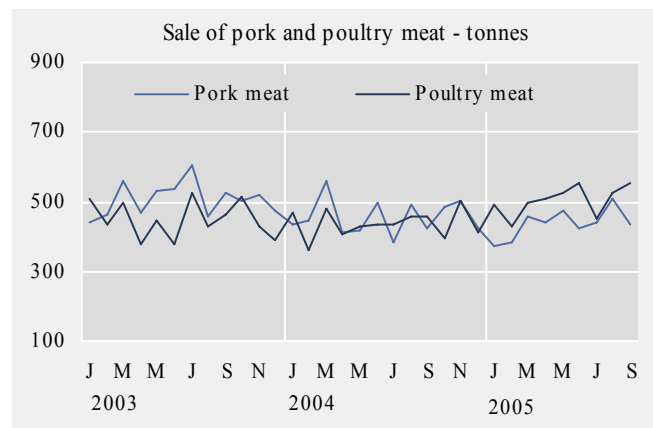
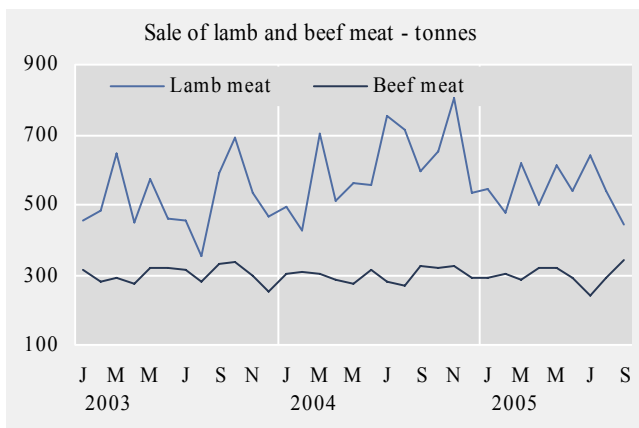
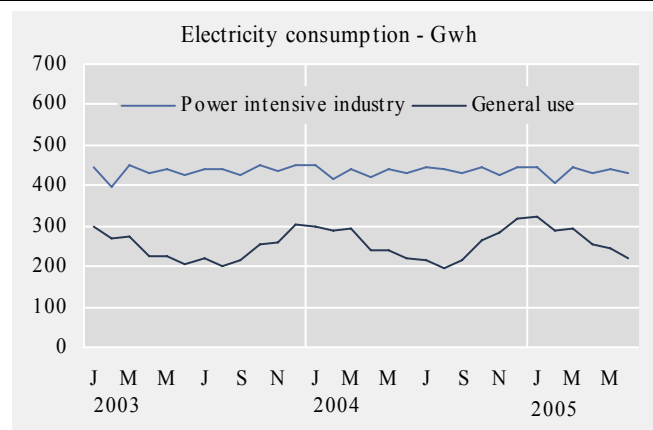
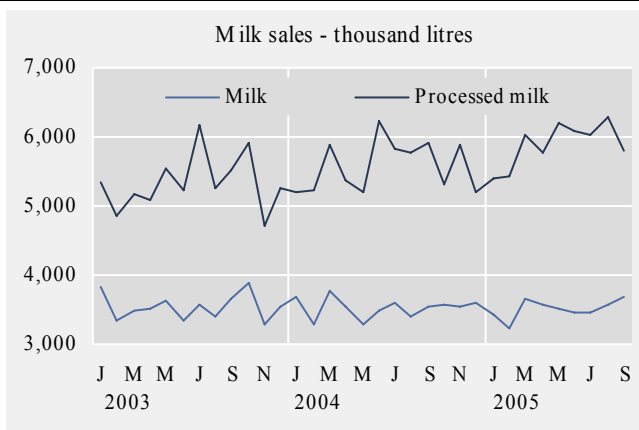


Consumer price index



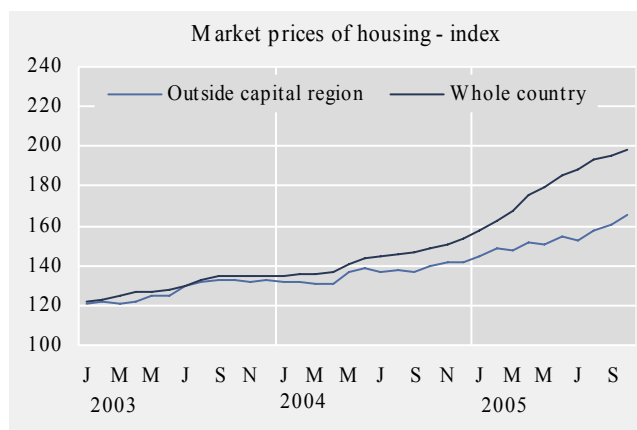
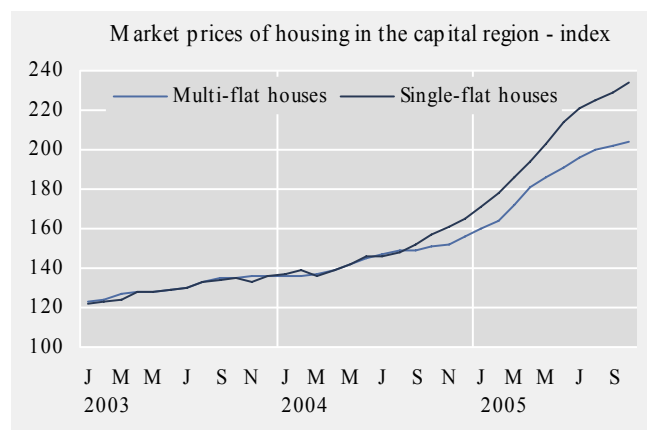
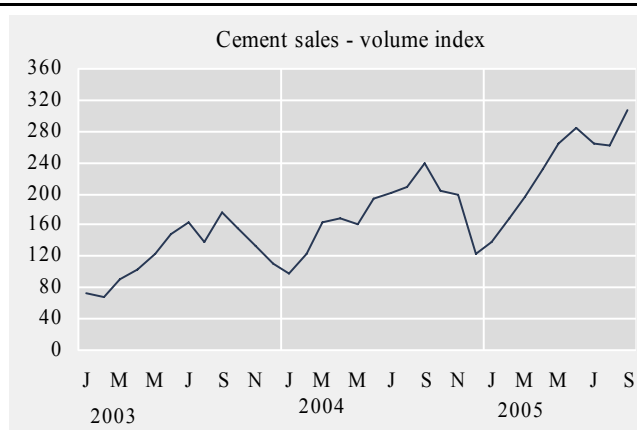
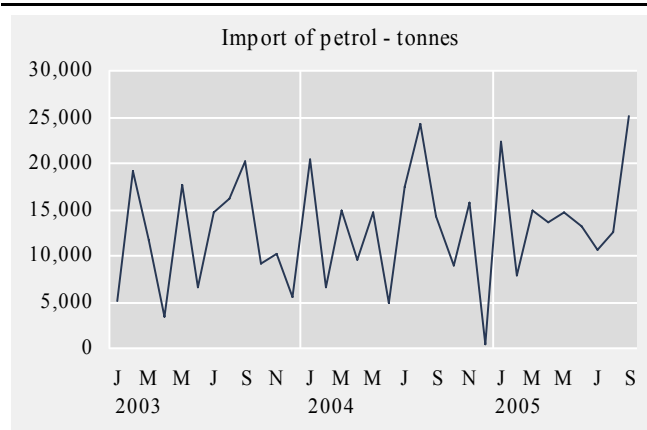
Short term indicators in October 2005

	Milk production and sales in thousand litres			Sale of meat in tonnes				Electricity cons. Gwh	
	Milk received by dairies	Milk sales from dairies	Milk processing converted by protein content	Lamb	Beef	Pork	Poultry	Power intensive industry	General use
2003	108,384	42,454	64,074	6,078	3,602	6,076	5,392.7	5,229.4	2,953.6
2004	112,030	42,278	66,994	7,301	3,612	5,475	5,236.3	5,232.4	3,076.3
Sep. 2003	7,995	3,653	5,512	592	332	524	466	426.7	214.9
Oct. 2003	7,800	3,876	5,916	691	338	505	513	450.1	255.4
Nov. 2003	7,630	3,287	4,722	534	296	523	431	435.3	261.1
Dec. 2003	9,086	3,550	5,257	464	250	472	387	450.1	303.1
Jan. 2004	9,347	3,673	5,206	492	306	434	470	448.0	297.6
Feb. 2004	8,739	3,286	5,217	429	311	448	360	416.3	288.7
Mar. 2004	10,207	3,784	5,872	702	304	557	479	440.8	294.0
Apr. 2004	9,925	3,534	5,360	510	287	411	406	419.6	241.3
May 2004	10,389	3,280	5,195	561	274	416	428	442.0	239.3
Jun. 2004	10,122	3,499	6,224	558	317	497	435	429.2	218.1
Jul. 2004	9,554	3,587	5,826	754	280	384	433	443.3	214.6
Aug. 2004	8,942	3,410	5,776	712	272	492	457	440.4	197.2
Sep. 2004	8,492	3,531	5,923	595	327	421	460	430.6	217.3
Oct. 2004	8,259	3,563	5,317	650	321	486	392	447.2	266.2
Nov. 2004	8,797	3,537	5,876	806	323	504	504	428.1	285.0
Dec. 2004	9,258	3,594	5,202	533	292	425	411	447.0	317.1
Jan. 2005	9,488	3,430	5,400	547	290	374	493	444.1	324.1
Feb. 2005	8,905	3,218	5,434	478	302	382	429	404.7	289.6
Mar. 2005	10,076	3,651	6,023	621	288	458	500	445.1	295.8
Apr. 2005	9,876	3,561	5,773	499	317	438	506	432.8	256.6
May 2005	10,449	3,502	6,206	610	319	476	524	438.3	245.3
Jun. 2005	9,902	3,455	6,095	541	291	426	555	428.9	218.0
Jul. 2005	8,957	3,453	6,021	643	244	443	454	.	.
Aug. 2005	8,894	3,571	6,290	542	289	506	524	.	.
Sep. 2005	9,505	3,674	5,788	445	344	435	551	.	.



Short term indicators in October 2005

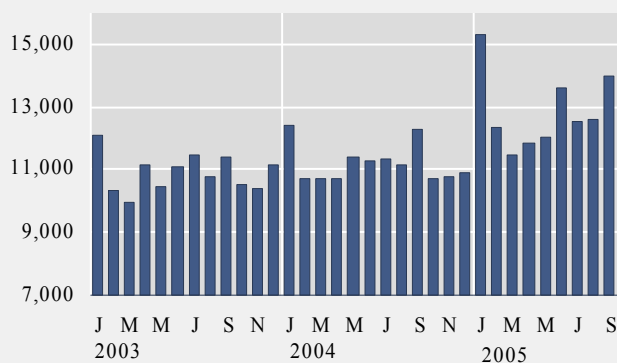
	Import of fuel in tonnes				Cement sales index	Public housing fund loans	Market prices of housing - index			
	Petrol	Gas oils	Fuel oils	Jet fuel			Multi-flat houses, cap. region	Single-flat houses, cap. region	All types, outside cap. region	All types, whole country
2003	139,395	383,955	58,032	109,656	123.6	2,500	130.2	129.6	127.3	129.4
2004	151,986	465,633	55,092	124,453	173.8	2,455	144.9	147.4	136.2	143.0
Oct. 2003	9,141	41,897	5,385	9,379	155.7	233	135.1	135.2	133.2	134.6
Nov. 2003	10,226	29,625	228	8,873	133.4	235	135.6	133.5	131.9	134.4
Dec. 2003	5,466	13,757	2,124	2,391	110.2	270	136.1	135.6	132.5	135.1
Jan. 2004	20,522	49,532	4,425	11,336	98.8	218	136.1	137.4	131.6	135.1
Feb. 2004	6,577	9,897	4,122	8,002	122.9	204	136.2	138.9	131.4	135.3
Mar. 2004	14,960	47,038	3,665	12,604	163.8	260	136.9	135.8	131.1	135.3
Apr. 2004	9,529	37,708	7,841	6,338	169.9	200	139.1	139.4	131.2	137.1
May 2004	14,677	35,997	7,533	8,584	161.1	301	141.6	142.2	136.4	140.3
Jun. 2004	4,833	18,489	3,454	1,785	193.6	335	144.6	146.0	138.4	143.3
Jul. 2004	17,342	58,012	1,244	5,388	200.8	184	147.4	145.7	136.3	144.4
Aug. 2004	24,303	72,508	7,288	33,899	207.8	190	148.8	148.5	137.5	145.9
Sep. 2004	14,173	37,955	9,026	6,225	239.3	165	149.1	152.2	137.1	146.5
Oct. 2004	8,890	36,378	5,070	13,478	204.9	108	150.9	157.1	139.5	148.9
Nov. 2004	15,671	62,120	1,207	4,888	198.2	126	152.2	160.8	142.0	150.8
Dec. 2004	508	0	216	11,926	124.0	164	155.8	164.6	141.3	153.3
Jan. 2005	22,256	43,893	6,222	13,479	138.8	175	159.9	171.3	145.0	157.6
Feb. 2005	7,792	16,048	8,592	13,149	169.1	159	164.5	177.8	148.3	162.2
Mar. 2005	14,993	46,947	5,767	12,981	196.0	192	172.3	185.5	147.7	167.9
Apr. 2005	13,611	7,334	9,375	4,763	232.3	172	181.1	193.7	151.2	175.2
May 2005	14,665	37,023	5,876	15,047	264.6	202	186.0	203.4	150.3	179.3
Jun. 2005	13,183	37,080	0	12,001	283.7	183	191.1	213.7	154.8	185.0
Jul. 2005	10,556	64,377	1	13,457	263.1	201	196.0	220.8	153.0	188.5
Aug. 2005	12,466	31,446	6,426	752	262.4	154	200.3	225.0	157.7	192.9
Sep. 2005	25,114	65,783	11,763	30,387	307.0	168	202.3	229.1	161.0	195.5
Oct. 2005	204.1	234.0	165.6	198.4



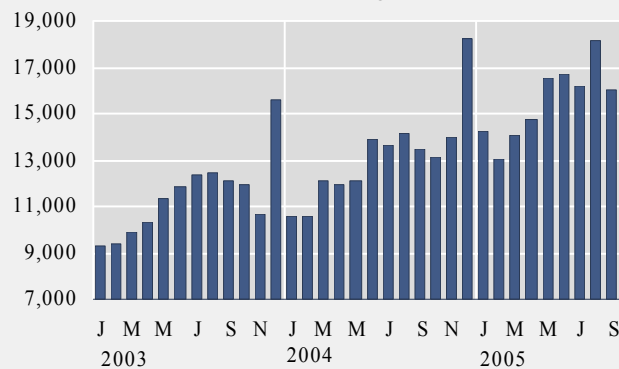
Short term indicators in October 2005

	Credit and debit card usage in million ISK				Number of new regist. cars	Import of cars, cif, million ISK	Number of passengers to Keflavik airport	Number of overnight stays in hotels
	Domestic credit card usage	Credit card usage abroad	Debit card usage in retail	Foreign credit card usage in Iceland				
2003	130,835	19,693	137,242	13,106	13,289	18,885	583,832	879,356
2004	134,327	22,709	157,704	13,937	16,501	25,693	692,505	927,724
Sep. 2003	11,402	1,832	12,073	1,590	1,006	1,599	48,509	77,931
Oct. 2003	10,536	1,864	11,963	898	1,067	1,961	48,567	78,470
Nov. 2003	10,418	1,892	10,666	731	902	1,378	38,842	50,754
Dec. 2003	11,174	1,844	15,613	647	742	1,378	35,050	34,722
Jan. 2004	12,403	761	10,586	540	963	1,393	27,128	32,056
Feb. 2004	10,708	2,128	10,558	1,083	952	1,377	34,353	53,651
Mar. 2004	10,709	1,572	12,064	767	1,307	2,060	41,415	68,071
Apr. 2004	10,695	1,868	11,899	841	1,384	2,206	55,733	71,422
May 2004	11,404	1,804	12,077	1,020	1,617	2,334	55,200	82,547
Jun. 2004	11,283	2,188	13,918	1,264	2,277	3,184	84,257	113,295
Jul. 2004	11,350	1,970	13,611	1,776	1,654	2,250	104,793	153,218
Aug. 2004	11,141	1,997	14,132	2,629	1,122	1,631	93,051	138,251
Sep. 2004	12,259	1,917	13,509	1,595	1,318	1,931	55,756	81,919
Oct. 2004	10,702	2,174	13,152	950	1,256	1,945	56,667	84,043
Nov. 2004	10,788	2,222	13,993	812	1,303	1,969	46,492	53,070
Dec. 2004	10,885	2,110	18,203	660	1,348	3,413	37,660	37,361
Jan. 2005	15,306	1,345	14,262	696	1,813	2,589	31,028	36,413
Feb. 2005	12,322	1,849	13,024	625	1,608	2,444	37,919	53,123
Mar. 2005	11,439	1,903	14,062	740	1,779	2,812	53,071	64,962
Apr. 2005	11,819	2,307	14,718	784	2,415	3,633	50,190	76,927
May 2005	12,028	2,355	16,544	1,058	2,866	4,516	58,670	86,660
Jun. 2005	13,592	2,692	16,732	1,628	3,394	4,622	91,252	122,090
Jul. 2005	12,558	2,425	16,230	2,385	2,519	3,382	111,749	156,027
Aug. 2005	12,611	2,592	18,126	2,793	1,936	3,046	100,134	151,071
Sep. 2005	13,958	2,019	16,016	1,727	1,542	3,117	65,180	

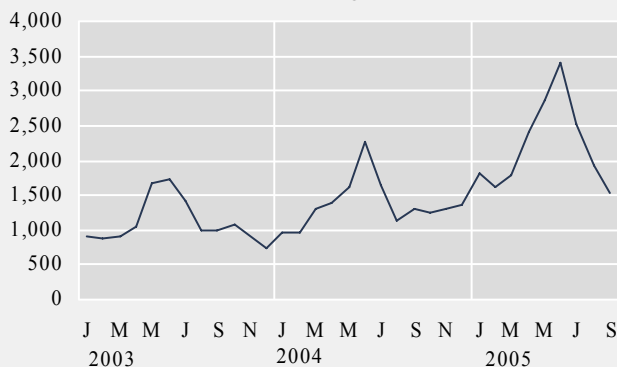
Domestic credit card usage - million ISK



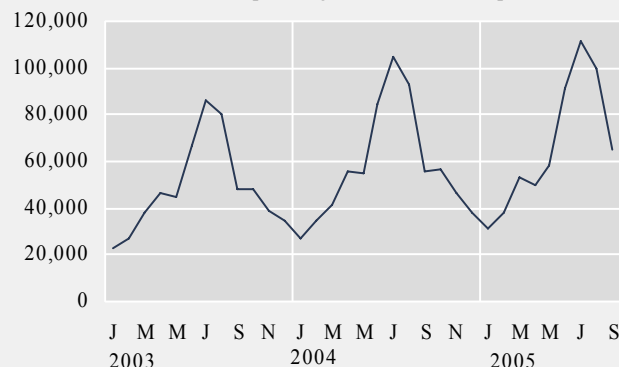
Domestic debit card usage - million ISK



Number of new registered cars

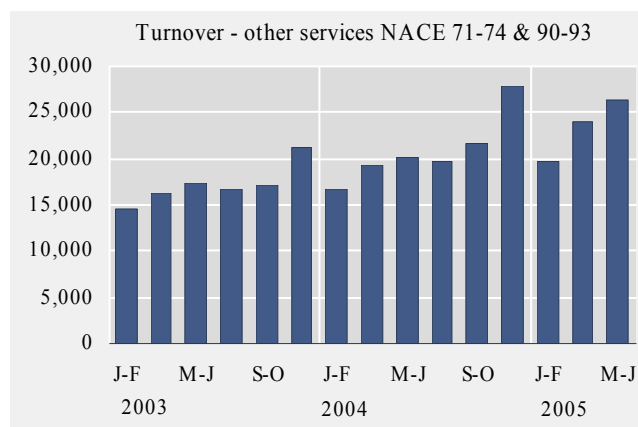
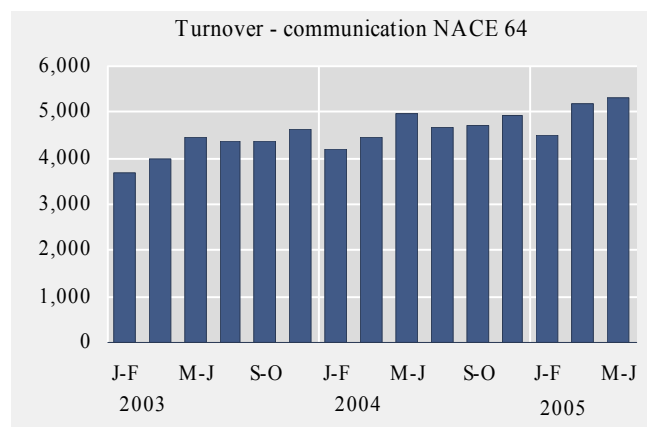
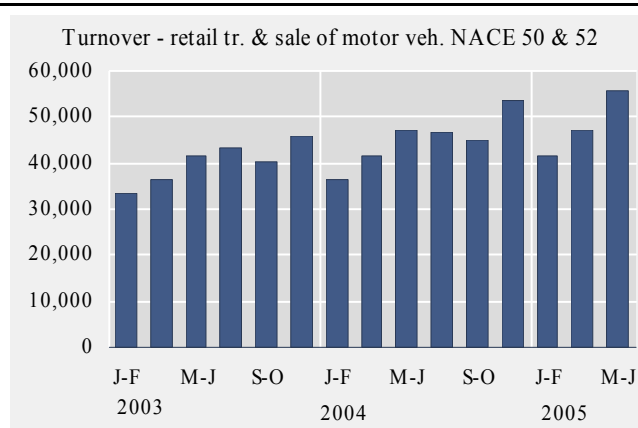
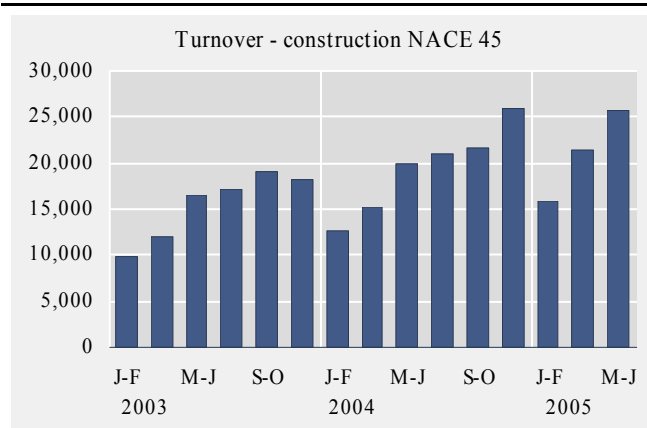


Number of passengers to Keflavik airport



Short term indicators in October 2005

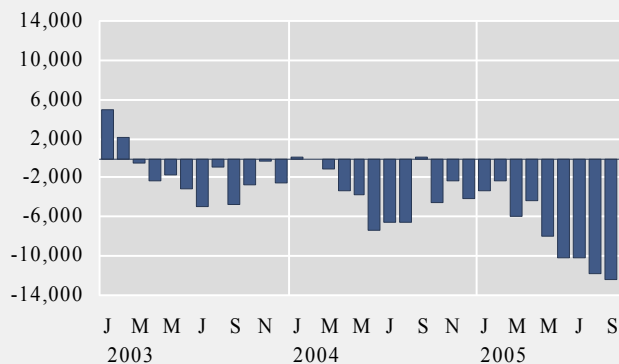
	Turnover by industry, based on VAT records, in million ISK						
	Manufacturing NACE 15-37	Construction NACE 45	Retail trade and motor vehicles NACE 50 & 52	Hotels and restaurants NACE 55	Transport NACE 60-63	Communi- cation NACE 64	Other services NACE 71-74 & 90-93
2003	312,460	92,917	240,791	28,983	101,990	25,512	119,351
2004	342,717	116,408	270,682	32,216	123,266	27,930	125,395
May-Jun 2001	53,017	15,897	37,782	4,760	20,666	3,946	17,034
Jul-Aug 2001	55,312	16,706	39,081	5,956	23,385	3,363	15,215
Sep-Oct 2001	55,490	16,161	35,338	4,300	18,920	3,391	16,165
Nov-Dec 2001	55,262	14,817	41,817	3,985	16,702	3,786	19,121
Jan-Feb 2002	50,042	9,527	31,010	3,105	15,293	3,282	14,392
Mar-Apr 2002	56,741	9,796	34,140	3,872	16,795	3,598	16,298
May-Jun 2002	54,254	13,899	39,354	4,960	19,051	3,862	16,898
Jul-Aug 2002	51,404	13,875	40,536	6,293	21,193	3,740	16,129
Sep-Oct 2002	55,711	14,120	35,952	4,195	20,004	3,687	16,889
Nov-Dec 2002	54,852	13,205	42,122	3,990	14,856	3,629	19,330
Jan-Feb 2003	45,845	9,828	33,279	3,186	14,221	3,704	14,538
Mar-Apr 2003	52,886	12,010	36,534	3,949	14,449	3,990	16,359
May-Jun 2003	54,052	16,601	41,519	5,386	20,704	4,436	17,378
Jul-Aug 2003	50,299	17,088	43,441	7,209	19,440	4,380	16,632
Sep-Oct 2003	55,009	19,141	40,355	4,815	17,869	4,358	17,183
Nov-Dec 2003	54,373	18,249	45,664	4,438	15,305	4,644	21,234
Jan-Feb 2004	46,553	12,738	36,250	3,599	15,087	4,210	16,701
Mar-Apr 2004	60,094	15,164	41,574	4,419	18,301	4,454	19,370
May-Jun 2004	60,382	19,829	46,990	5,886	21,260	4,966	20,048
Jul-Aug 2004	54,031	21,012	46,898	8,073	26,058	4,652	19,664
Sep-Oct 2004	59,743	21,672	45,188	5,356	22,794	4,709	21,746
Nov-Dec 2004	61,914	25,993	53,782	4,883	19,766	4,939	27,866
Jan-Feb 2005	49,519	15,891	41,484	3,944	17,338	4,496	19,739
Mar-Apr 2005	60,630	21,324	47,240	4,993	20,765	5,195	24,028
May-Jun 2005	64,966	25,706	55,608	6,760	25,390	5,316	26,268



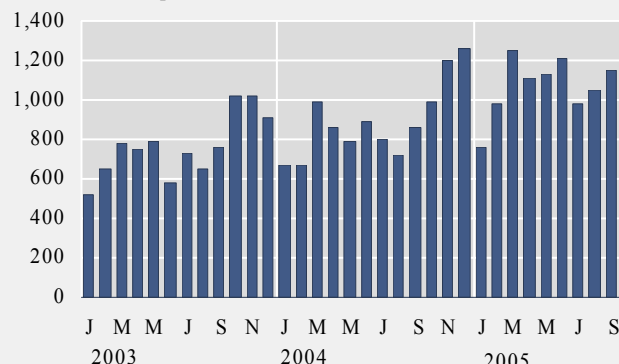
Short term indicators in October 2005

	External trade, fob, in million ISK					Price index of marine products ISK	Prices of aluminium (LME) USD/tonnes	Oil price (UK Brent 38) USD/barrel
	Balance of trade	Export of goods total	Import of goods total	Import of consumer durables	Import of industrial supplies			
2003	-16,932	182,580	199,512	9,372	79,851	146.3	1,427.9	29.3
2004	-37,787	202,373	240,160	10,694	96,192	142.3	1,721.2	39.0
Oct. 2003	-2,796	15,805	18,601	1,015	7,030	146.4	1,482.4	30.0
Nov. 2003	-261	15,950	16,211	1,020	5,724	145.9	1,512.4	29.1
Dec. 2003	-2,503	13,672	16,175	915	5,509	144.9	1,567.8	30.4
Jan. 2004	304	16,746	16,442	673	7,336	141.0	1,622.3	32.0
Feb. 2004	132	14,265	14,133	669	5,437	139.9	1,704.2	31.5
Mar. 2004	-955	20,264	21,219	986	8,890	139.3	1,676.5	34.6
Apr. 2004	-3,175	16,849	20,024	862	7,665	141.9	1,744.4	34.0
May 2004	-3,586	15,045	18,630	789	6,952	140.9	1,633.7	38.6
Jun. 2004	-7,194	15,952	23,146	890	8,781	141.4	1,682.5	35.5
Jul. 2004	-6,224	16,840	23,063	798	8,612	142.4	1,715.7	38.5
Aug. 2004	-6,493	14,069	20,563	724	10,110	142.7	1,702.8	44.5
Sep. 2004	286	19,445	19,159	859	7,988	145.3	1,730.7	43.6
Oct. 2004	-4,506	17,103	21,609	993	8,978	146.1	1,782.2	51.4
Nov. 2004	-2,345	18,904	21,248	1,195	8,789	145.3	1,807.8	43.4
Dec. 2004	-4,031	16,892	20,923	1,257	6,653	142.5	1,851.1	40.2
Jan. 2005	-3,344	13,913	17,257	760	7,313	142.1	1,826.7	45.5
Feb. 2005	-2,323	16,415	18,738	980	7,062	138.5	1,962.0	53.2
Mar. 2005	-5,900	16,360	22,261	1,249	8,745	133.5	1,848.0	49.5
Apr. 2005	-4,406	17,117	21,522	1,114	8,107	136.0	1,888.0	51.1
May 2005	-8,002	15,958	23,960	1,128	9,396	139.8	1,753.0	47.8
Jun. 2005	-10,188	17,069	27,257	1,208	9,609	138.9	1,748.0	54.1
Jul. 2005	-10,212	13,714	23,925	982	10,308	138.0	1,778.0	57.7
Aug. 2005	-11,753	14,190	25,943	1,053	9,415	140.1	1,889.0	64.3
Sep. 2005	-12,457	14,799	27,256	1,151	12,452	140.3	1,854.0	62.7
Oct. 2005	1,999.0	59.4

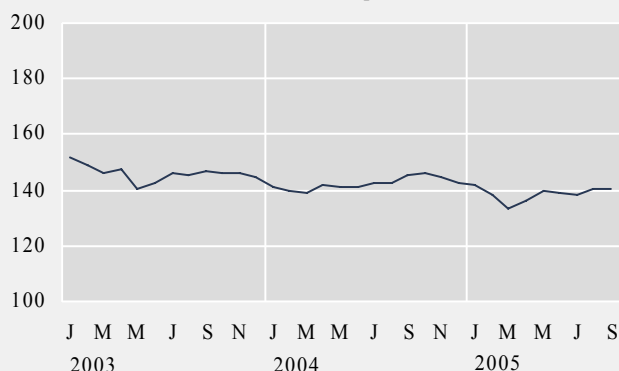
Balance of trade - million ISK



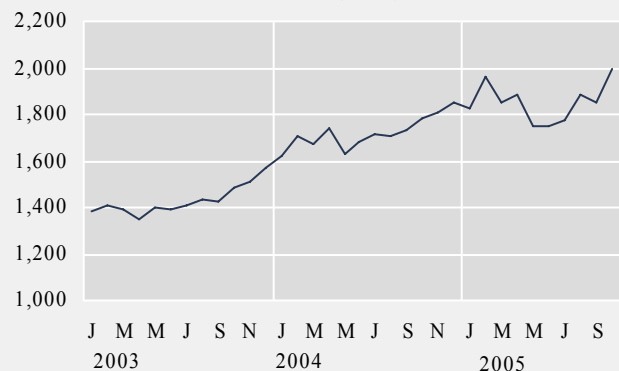
Import - consumer durables, fob, million ISK



Price index of marine products - ISK

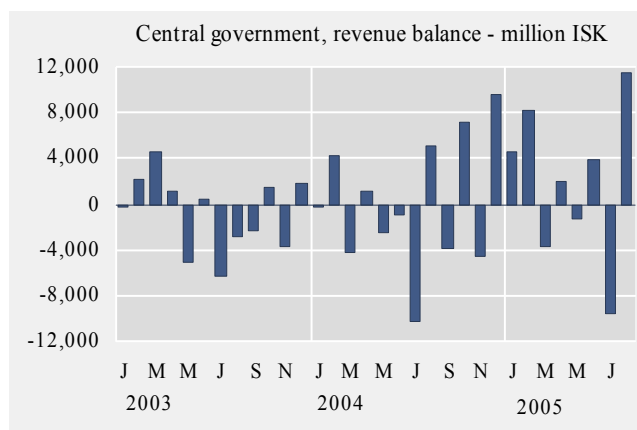
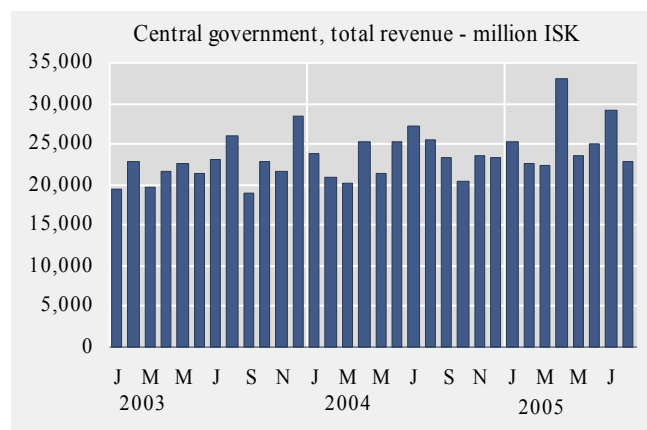
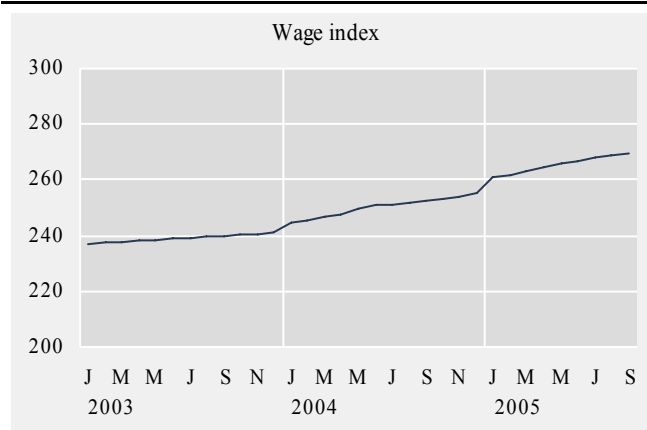


Prices of aluminium (LME) - USD/tonnes



Short term indicators in October 2005

	Wage index	Real wages, index	Quarterly average (from 2003)			Central government finance, million ISK		
			Labour force participation %	Unemployment %	Number of employed persons	Total revenue	Total expenditure	Revenue balance
2003	239.1	107.9	82.2	3.4	156,900	229,442	240,313	-10,871
2004	250.3	109.4	80.7	3.1	156,200	280,696	280,382	314
Sep. 2003	239.9	107.7	.	.	.	16,625	18,938	-2,313
Oct. 2003	240.4	107.6	.	.	.	24,266	22,851	1,415
Nov. 2003	240.7	107.5	80.4	2.9	153,200	17,883	21,605	-3,722
Dec. 2003	241.0	107.5	.	.	.	30,324	28,541	1,783
Jan. 2004	244.9	109.3	.	.	.	23,533	23,807	-274
Feb. 2004	245.4	109.4	79.2	3.1	152,300	25,197	20,967	4,230
Mar. 2004	246.8	109.4	.	.	.	15,900	20,189	-4,289
Apr. 2004	247.5	109.0	.	.	.	26,477	25,273	1,204
May 2004	249.5	109.0	82.9	4.0	158,000	18,064	21,361	-2,426
Jun. 2004	251.1	109.5	.	.	.	24,366	25,340	-974
Jul. 2004	251.4	109.9	.	.	.	16,844	27,202	-10,358
Aug. 2004	252.0	109.9	81.5	2.6	158,100	30,652	25,538	5,114
Sep. 2004	252.5	109.5	.	.	.	20,174	23,255	-3,952
Oct. 2004	253.2	109.3	.	.	.	27,538	20,372	7,166
Nov. 2004	253.8	109.2	79.7	2.5	156,300	19,003	23,656	-4,653
Dec. 2004	255.5	109.6	.	.	.	32,948	23,422	9,526
Jan. 2005	261.1	111.9	.	.	.	29,894	25,338	4,556
Feb. 2005	261.9	111.7	79.8	3.0	155,800	30,824	22,559	8,265
Mar. 2005	262.9	111.6	.	.	.	18,731	22,358	-3,627
Apr. 2005	264.2	112.3	.	.	.	34,852	32,947	1,905
May 2005	265.9	112.9	83.5	3.0	163,800	22,255	23,588	-1,333
Jun. 2005	267.0	112.9	.	.	.	28,984	25,097	3,887
Jul. 2005	268.0	113.2	.	.	.	19,545	29,098	-9,553
Aug 2005	268.9	112.6	83.1	1.8	164,000	34,209	22,802	11,407
Sep 2005	269.8	111.8



Explanatory notes and references

References are quoted for data originating outside Statistics Iceland.

GDP growth rate, %. Change in the volume of gross domestic product each quarter as compared with the same quarter of the previous year.

Consumer price index and **Consumer price index less housing cost.** May 1988=100. Compiled at the beginning of each month. Yearly averages are converted by middle month indices.

Harmonized index of consumer prices. 1996=100. The harmonized index of consumer prices (HICP) is compiled for all EEA-member states. It differs in scope from the Icelandic CPI. The main difference is that imputed rent for owner occupied housing is included in the Icelandic CPI but not in the HICP. On the other hand, expenditure of foreign visitors in Iceland and expenditure of people living in hospitals and similar institutions are included in the HICP but not in the Icelandic CPI.

Building cost index. June 1987=100. The index is compiled at the middle of each month.

Fish catch, volume index. The fish catch for each month is valued at average prices of 1990 and converted to an index with 1998=100.

Aluminium production, tonnes. Source: Producers.

Milk received by dairies. Thousand litres. Milk from farmers received by dairies. Source: Icelandic Dairy Association.

Milk sales from dairies. Thousand litres. Sale of milk, cream, skimmed milk and other liquid milk products. Source: Icelandic Dairy Association.

Milk processing converted by protein content. Processed milk products other than milk, cream, skimmed milk and other liquid milk products converted into thousand litres on the basis of protein content. Source: Icelandic Dairy Association.

Sale of meat in tonnes. Lamb, beef, pork, poultry. Includes sales of domestic produce but not imported meat nor game. Source: Association of Icelandic farmers.

Electricity consumption. Gigawatt-hours. Divided into consumption by power-intensive industry which is defined as aluminium and ferrosilicon production. All other consumption is considered general use. Source: National Energy Authority.

Import of fuel in tonnes. Petrol, gas oils, fuel oils and jet fuel derived from the external trade statistics.

Cement sales. Index 1990=100. Sale of domestic and imported cement. Source: Producers and importers.

Public housing fund loans. Number of loans to individuals for new construction, loans to entrepreneurs are excluded. Source: Housing Loan Fund.

Market prices of housing. Indices, March 2000=100. The indices are sub items from the CPI based on housing sales contracts collected by the Land Registry of Iceland.

Credit and debit card usage. Million Icelandic krónur (ISK). The figures show total household expenditure by credit and debit cards. Withdrawals at ATM's and payments made in banks are not included. Sources: VISA Iceland and MasterCard.

Number of new car registrations. Includes both new and used cars. Source: The Icelandic Federation for Motor Trades and Repairs.

Import of cars. Cif-value, million ISK.

Number of passengers to Keflavik Airport. The total number of visitors, Icelandic and foreign, arriving by air at Keflavík international airport. Transit passengers are not included in these figures. Source: Civil Aviation Administration, Keflavík Airport.

Number of overnight stays in hotels. Covers hotels that are operated throughout the year.

Turnover by industry. Million ISK. The figures show total turnover according to VAT returns for every two VAT-accounting months. The turnover excludes VAT. Break-down by industry is based on the Statistics Iceland activity code, ÍSAT 95 which corresponds to NACE rev. 1.

External trade. Fob-value in ISK.

Price index of marine products. Based on unit prices of the main products according to data from producers, weighted by production or sales in the previous year. 1990=100.

Prices of aluminium (LME). Average monthly price of aluminium on the London Metal Exchange. Source: The National Power Company.

Oil price (UK Brent 38). Average monthly price of a barrel of North-Sea oil. Source: Oliufélagið hf.

Wage index. December 1988=100. Refers to average wages each month.

Real wages. Index 2000=100. Refers to the change in the wage index deflated by the CPI converted to mid-month figures.

Labour force participation, unemployment and number of employed persons. The figures show results from the labour force sample survey (LFS) of Statistics Iceland. From 2003 onwards, the LFS is continuous and renders quarterly results. Sample size is 4,000 persons each quarter. In the period 1991-2002 the LFS was carried out twice each year, in April and in November.

Labour force participation: The total labour force (employed and unemployed) as a proportion of the total population 16-74 years of age.

Unemployment: The number of unemployed as a proportion of the labour force.

Number of employed persons: Total number of persons engaged in any kind of work for payment, including self-employed.

Central government finance. Total revenue, total expenditure and revenue balance. Million ISK. Cash basis. Source: Government Accounting Office.

Hagþíðindi
Statistical Series

Vol. 90, No. 52
ISSN 0019-1078

Short term indicators

www.statice.is/series • information@statice.is

2005:10

ISSN 1670-4819 (paper) • ISSN 1670-4827 (pdf)

Price EUR 6 • *Subscription* EUR 62

Supervision Vilhjálmur Bjarnason • vilhjalmur.bjarnason@statice.is

Telephone +(354) 528 1000

© Statistics Iceland • Borgartúni 21a 150 Reykjavík Iceland

Fax +(354) 528 1099

Please quote the source.