



Efni/Subject: Orkuöflafræði á Íslandi / Energy statistics in Iceland
Titill/Title: Þróun olíusölu eftir geirum á Íslandi 1982 - 2018 / Development of fuel sales by sector in Iceland 1982 - 2018
Lyklir/Keyword: Olíusala, notkunarlokkar, bifreiðar, siglingar, flug, iðnaður, húshitun, sundlaugar, orkuvinnsla / Fuel, sales, sector, automobiles, vessels, aviation, industry, heating, swimming pools, energy production
Aðkenni/Identifier: OS-2019-T005-01
Útgáfudagur/Date: 28/05/2019
Síðast uppfært/Last edition: Orkustofnun
Tímabil/Period: 01.01.1982-31.12.2018
Tilvísun: Orkustofnun (2019), OS-2019-T005-01: Þróun olíusölu eftir geirum á Íslandi 1982 - 2018.
Citation: Orkustofnun (2019), OS-2019-T005-01: Development of fuel sales by sector in Iceland 1982 - 2018.

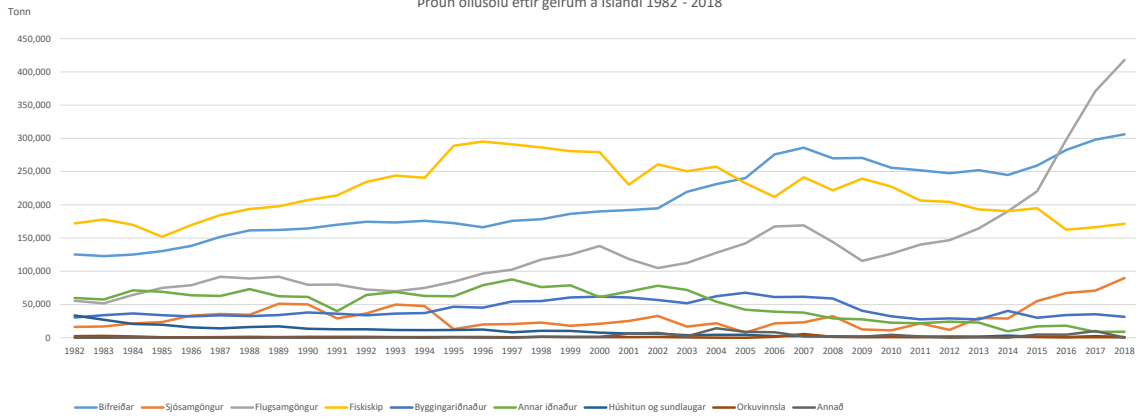
Tafla 1: Þróun olíusölu eftir geirum á Íslandi 1982 - 2018

Ár	Sjósamgöngur				Flugsamgöngur			Fiskiskip			Byggingariðnaður		Annar iðnaður		Húshitun og sundlaugar		Orkuvinnsla		Annad		Samtals
	Bifreiðar Tonn	Heild Tonn	Innanlands Tonn	Millilanda Tonn	Heild Tonn	Innanlands Tonn	Millilanda Tonn	Heild Tonn	Innlend Tonn	Erlend Tonn	Tonn	Tonn	Tonn	Tonn	Tonn	Tonn	Tonn	Tonn	Tonn	Tonn	Tonn
1982	125,237	16,247	16,247	0	55,541	8,431	47,110	172,062	172,062	0	30,524	59,720	33,506	2,300	0	495,137					
1983	122,793	16,967	16,967	1,000	51,753	7,350	44,403	177,887	177,887	0	33,974	57,625	26,981	2,827	0	490,807					
1984	125,161	21,521	16,907	4,614	64,428	7,238	57,190	169,817	169,817	0	36,657	71,353	20,831	1,966	220	511,954					
1985	130,303	23,623	18,444	5,179	74,969	8,306	66,663	151,871	151,871	0	33,980	69,217	19,662	700	59	504,384					
1986	138,290	33,231	19,616	13,615	78,937	8,793	70,144	169,575	169,575	0	32,076	63,867	15,457	700	41	532,174					
1987	151,889	35,735	19,977	15,758	91,664	9,983	81,681	184,504	184,504	0	33,782	62,786	14,038	1,000	43	575,441					
1988	161,601	34,464	17,489	16,975	89,206	9,481	79,725	193,743	193,743	0	32,423	73,157	16,218	1,400	25	602,237					
1989	162,175	51,214	19,146	32,068	91,784	9,906	81,878	197,725	197,725	0	34,215	62,473	17,207	1,000	84	617,877					
1990	164,379	50,085	18,919	31,166	79,687	10,090	69,597	207,319	207,319	0	37,981	61,477	13,612	1,300	39	615,879					
1991	170,073	29,165	17,314	11,851	80,045	9,710	70,335	214,159	214,159	0	36,240	39,984	12,745	1,400	44	583,855					
1992	174,466	36,658	17,771	18,887	72,642	8,126	64,516	234,462	234,462	0	33,774	64,288	12,610	1,300	254	630,454					
1993	173,427	49,854	19,176	30,678	69,890	7,901	61,989	244,006	244,006	0	36,464	68,965	11,759	1,000	460	655,825					
1994	175,787	47,736	18,236	29,500	74,956	7,271	67,685	240,570	240,570	0	37,162	62,801	11,485	1,000	33	651,530					
1995	172,463	12,851	11,798	1,053	84,207	9,384	74,823	288,958	244,572	44,386	46,736	62,439	11,614	1,091	510	680,869					
1996	166,237	19,949	13,943	6,006	96,644	10,619	86,025	295,119	262,006	33,113	45,324	79,081	12,260	1,270	122	716,006					
1997	175,904	20,531	8,462	12,069	102,500	9,946	92,554	290,861	255,940	34,921	54,612	87,727	8,260	689	8	741,092					
1998	178,380	22,799	6,501	16,298	117,573	10,441	107,132	286,240	246,665	39,575	55,229	76,131	10,458	1,380	1,578	749,768					
1999	186,373	17,992	5,694	12,298	125,170	10,043	115,127	280,606	241,252	39,354	60,536	78,812	10,270	1,050	1,382	762,191					
2000	190,062	21,003	3,967	17,036	138,014	8,830	129,184	279,121	227,114	52,007	61,885	61,246	7,747	1,012	1,453	761,543					
2001	192,042	25,144	6,493	18,651	118,378	7,764	110,614	230,281	201,962	28,319	60,538	69,549	6,511	897	6,301	709,641					
2002	194,771	32,731	5,873	26,858	104,976	6,807	98,169	260,809	222,331	38,478	56,693	78,203	5,959	1,135	7,221	742,498					
2003	219,540	16,800	10,720	6,080	112,495	6,991	105,504	250,540	211,251	39,289	51,951	71,891	6,311	2,151	7,212	729,782					
2004	231,081	21,864	15,276	6,588	127,807	7,412	120,395	257,289	201,983	55,306	62,354	54,270	4,465	112	14,263	773,505					
2005	240,230	7,634	7,080	554	141,857	8,262	133,595	232,556	197,976	34,580	67,781	42,175	4,435	21	8,928	745,617					
2006	275,737	21,669	16,206	5,463	167,326	8,938	158,388	211,962	173,955	38,007	61,333	39,231	2,493	1,354	8,296	789,401					
2007	285,906	23,198	19,397	3,801	169,083	7,007	162,076	241,358	179,406	61,952	61,655	37,849	2,506	5,607	2,078	829,240					
2008	269,871	32,541	17,371	15,170	143,880	8,332	135,548	221,758	163,955	57,803	59,020	29,010	1,609	1,436	2,249	761,374					
2009	270,426	12,585	9,979	2,606	115,702	6,920	108,782	239,409	189,359	50,050	40,667	27,617	1,704	760	1,499	710,369					
2010	255,818	11,098	11,018	80	126,241	6,714	119,527	227,427	169,238	58,189	32,225	22,655	1,637	1,012	4,350	682,463					
2011	251,885	21,641	5,853	15,788	140,118	6,438	133,680	206,341	158,597	47,744	27,655	21,740	1,595	683	1,916	673,574					
2012	247,479	11,913	4,323	7,591	146,713	6,225	140,488	204,465	153,913	50,552	29,074	24,268	1,745	1,090	260	667,006					
2013	252,083	29,788	4,961	24,827	164,347	6,229	158,118	193,037	150,901	42,136	27,647	22,728	1,585	1,090	768	693,073					
2014	244,926	28,799	6,424	22,375	190,269	12,800	177,469	190,466	139,610	50,851	40,457	9,644	3,300	1,423	214	709,498					
2015	259,002	55,138	8,335	46,803	220,244	6,491	213,753	194,965	143,660	51,305	30,331	17,199	1,431	1,185	4,767	783,962					
2016	282,467	67,278	8,701	58,577	297,949	7,167	290,782	162,607	134,847	27,760	34,126	18,100	1,067	726	4,549	868,869					
2017	298,042	71,027	9,895	61,132	370,959	7,287	363,672	166,325	126,473	39,852	35,389	8,891	2,294	695	10,990	965,033					
2018	306,044	89,774	13,663	76,111	417,767	7,802	409,965	171,490	135,984	35,506	31,436	9,114	954	742	236	1,027,557					

Table 1: Development of fuel sales by sector in Iceland 1982 - 2018

Year	Automobiles	Ocean Vessels			Aviation			Fishing Vessels			Construction	Other Industry	Space heating and swimming pools		Energy production	Other	Total
	Tonn	Combined Tonn	Domestic Tonn	International Tonn	Combined Tonn	Domestic Tonn	International Tonn	Combined Tonn	Domestic Tonn	Foreign Tonn	Tonn	Tonn	Tonn	Tonn	Tonn	Tonn	Tonn
1982	125,237	16,247	16,247	0	55,541	8,431	47,110	172,062	172,062	0	30,524	59,720	33,506	2,300	0	495,137	
1983	122,793	16,967	16,967	1,000	51,753	7,350	44,403	177,887	177,887	0	33,974	57,625	26,981	2,827	0	490,807	
1984	125,161	21,521	16,907	4,614	64,428	7,238	57,190	169,817	169,817	0	36,657	71,353	20,831	1,966	220	511,954	
1985	130,303	23,623	18,444	5,179	74,969	8,306	66,663	151,871	151,871	0	33,980	69,217	19,662	700	59	504,384	
1986	138,290	33,231	19,616	13,615	78,937	8,793	70,144	169,575	169,575	0	32,076	63,867	15,457	700	41	532,174	
1987	151,889	35,735	19,977	15,758	91,664	9,983	81,681	184,504	184,504	0	33,782	62,786	14,038	1,000	43	575,441	
1988	161,601	34,464	17,489	16,975	89,206	9,481	79,725	193,743	193,743	0	32,423	73,157	16,218	1,400	25	602,237	
1989	162,175	51,214	19,146	32,068	91,784	9,906	81,878	197,725	197,725	0	34,215	62,473	17,207	1,000	84	617,877	
1990	164,379	50,085	18,919	31,166	79,687	10,090	69,597	207,319	207,319	0	37,981	61,477	13,612	1,300	39	615,879	
1991	170,073	29,165	17,314	11,851	80,045	9,710	70,335	214,159	214,159	0	36,240	39,984	12,745	1,400	44	583,855	
1992	174,466	36,658	17,771	18,887	72,642	8,126	64,516	234,462	234,462	0	33,774	64,288	12,610	1,300	254	630,454	
1993	173,427	49,854	19,176	30,678	69,890	7,901	61,989	244,006	244,006	0	36,464	68,965	11,759	1,000	460	655,825	
1994	175,787	47,736	18,236	29,500	74,956	7,271	67,685	240,570	240,570	0	37,162	62,801	11,485	1,000	33	651,530	
1995	172,463	12,851	11,798	1,053	84,207	9,384	74,823	288,958	244,572	44,386	46,736	62,439	11,614	1,091	510	680,869	
1996	166,237	19,949	13,943	6,006	96,644	10,619	86,025	295,119	262,006	33,113	45,324	79,081	12,260	1,270	122	716,006	
1997	175,904	20,531	8,462	12,069	102,500	9,946	92,554	290,861	255,940	34,921	54,612	87,727	8,260	689	8	741,092	
1998	178,380	22,799	6,501	16,298	117,573	10,441	107,132	286,240	246,665	39,575	55,229	76,131	10,458	1,380	1,578	749,768	
1999	186,373	17,992	5,694	12,298	125,170	10,043	115,127	280,606	241,252	39,354	60,536	78,812	10,270	1,050	1,382	762,191	
2000	190,062	21,003	3,967	17,036	138,014	8,830	129,184	279,121	227,114	52,007	61,885	61,246	7,747	1,012	1,453	761,543	
2001	192,042	25,144	6,493	18,651	118,378	7,764	110,614	230,281	201,962	28,319	60,538	69,549	6,511	897	6,301	709,641	
2002	194,771	32,731	5,873	26,858	104,976	6,807	98,169	260,809	222,331	38,478	56,693	78,203	5,959	1,135	7,221	742,498	
2003	219,540	16,800	10,720	6,080	112,495	6,991	105,504	250,540	211,251	39,289	51,951	71,891	6,311	2,151	7,212	729,782	
20																	

Þróun olíusölu eftir geirum á Íslandi 1982 - 2018



Development of fuel sales by sector in Iceland 1982 - 201

