

i hillu

8

ÖRKUSTOFNUN  
MÁLASAFN

442.4/Qu

SIGURÐUR S. THORODDSEN

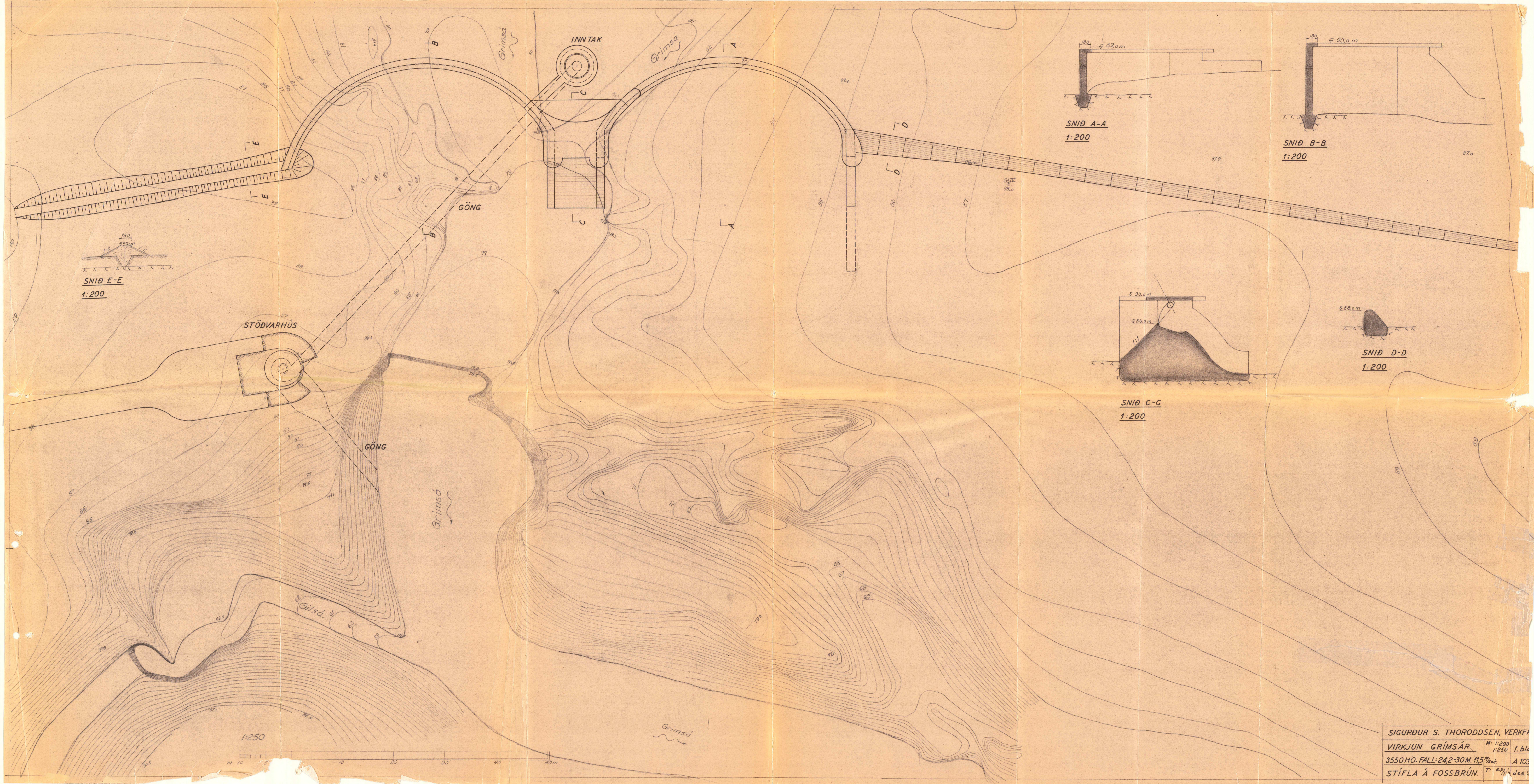
VERKFRÆÐINGUR

des. 1953

MÁLASAFN

442.4/Qu

VIRKJUN GRÍMSÁR



SNID E-E  
1:200

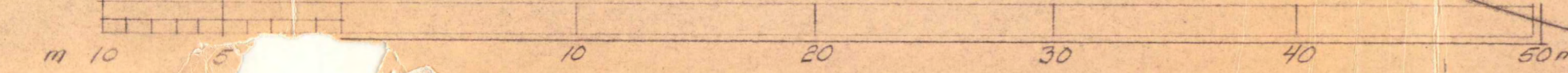
SNID A-A  
1:200

SNID B-B  
1:200

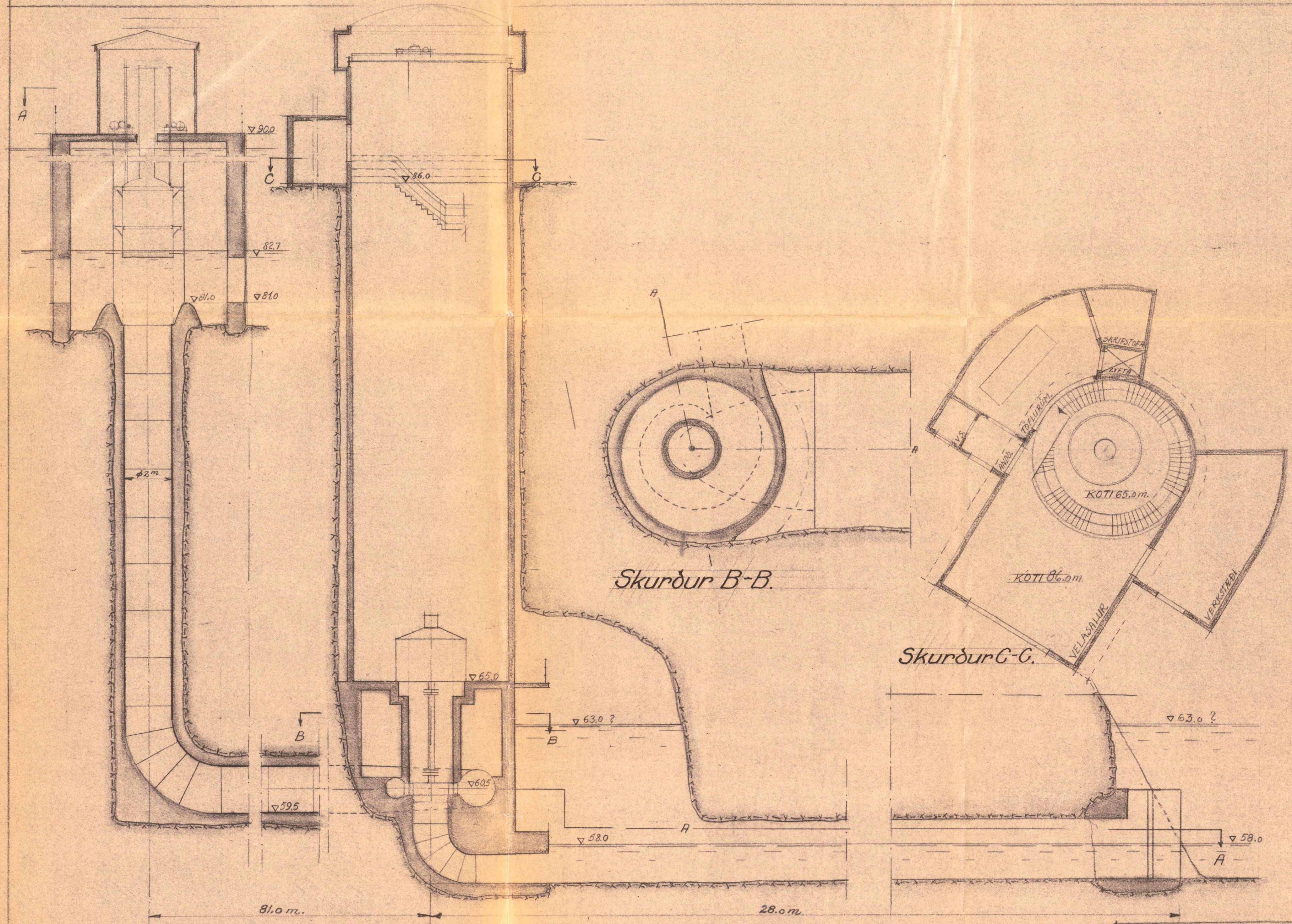
SNID C-C  
1:200

SNID D-D  
1:200

1:250



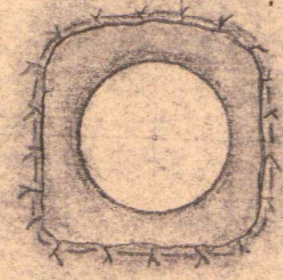
SIGURDUR S. THORODDSEN, VERKFR  
 VIRKJUN GRÍMSÁR. M: 1:200 1. bl.  
 3550 HÖ. FALL: 242-30M. 115% A 103  
 STÍFLA Á FOSSBRÚN. T: 8bl. / des.



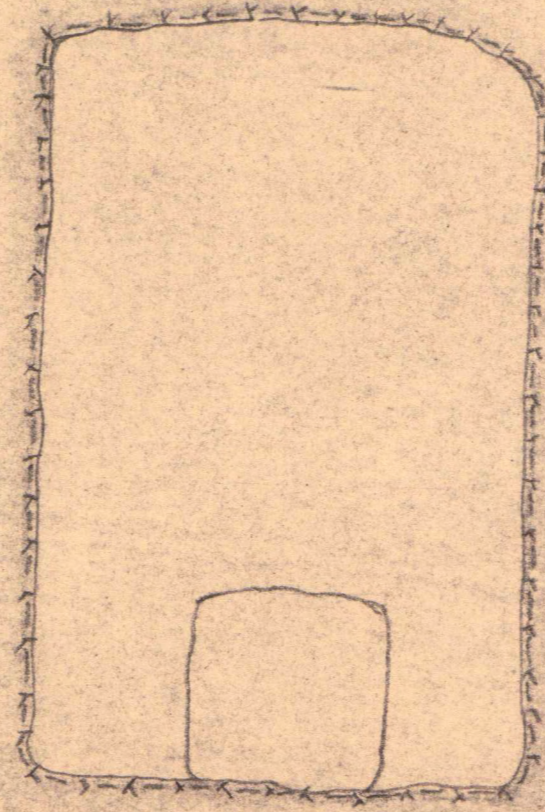
Skurður í inntak, stöðvarhús og göng.

Skurður A-A; D-D og E-E sjá 3. blöð.

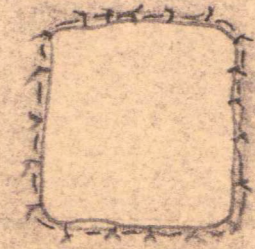
SÍGURÐUR S. THORODDSEN, VERKFR. M.V.I.	
VIRKJUN GRÍMSÁR.	2. blöð
3550 hö. fall: 24,2-30 m Q = 11,5 m <sup>3</sup> /sek	Malkv.: 1:100. A1039.
Inntak, stöðvarhús og göng.	Þregið St. 1 des. '53
	Þth. 4.



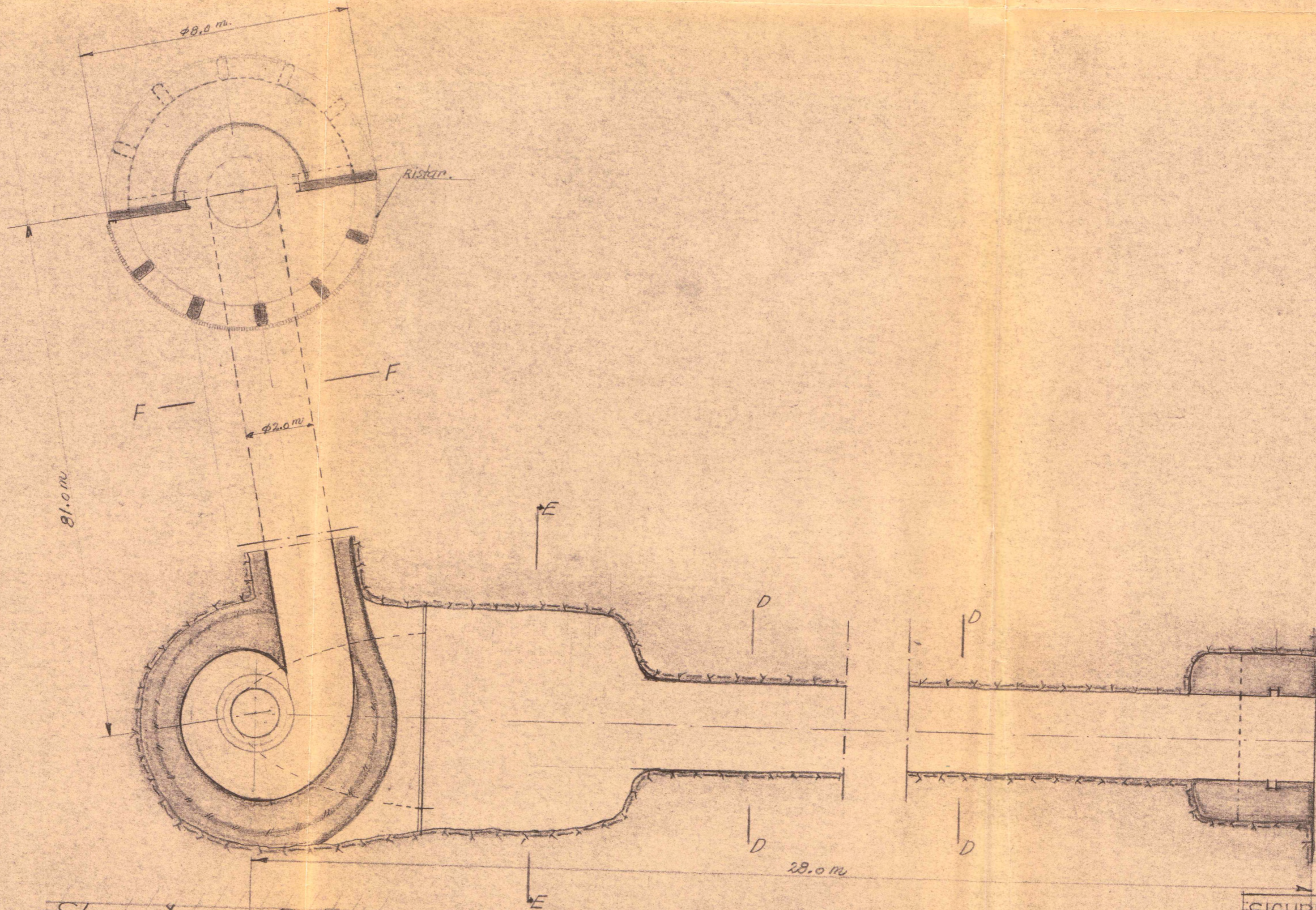
Skurður F-F.



Skurður E-E.



Skurður D-D.



Skurður A-A (sjá 2. blað)

1:100.

SIGURÐUR S. THORODDSEN, VERKFR.M.V.	
VIRKJUN GRÍMSÁR.	3. blað.
3550 hö. Fall: 24.2-30 m Q=11.5 m³/s	1:100 A 1040.
Göng og inntak.	1 des. '53

Skriðuvatn.

YFIRLITSMYND.

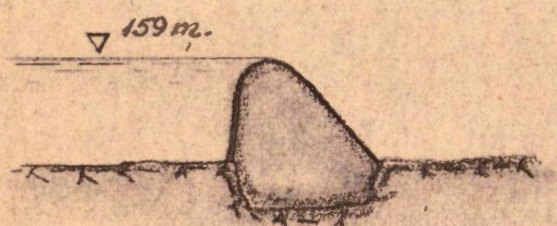
1:5000.

Yfirfall.

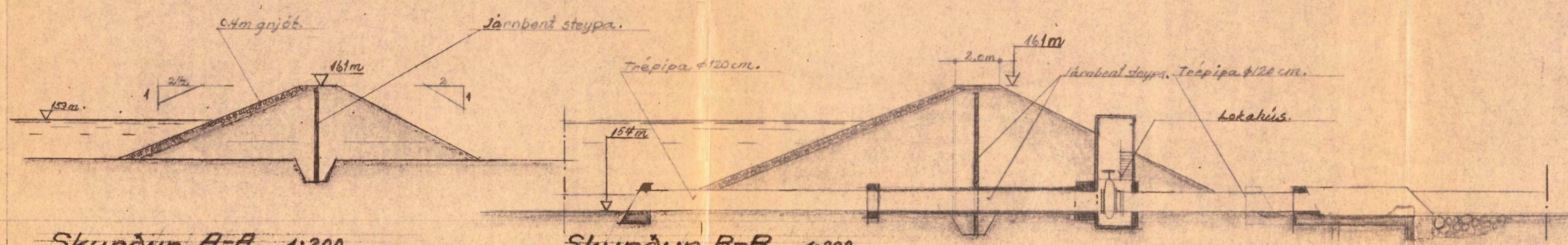
Járnstífla m. skryggju  
Kvarna.

Múlóð

Botnár.



Skurður C-C. 1:200



Skurður A-A. 1:200.

Skurður B-B. 1:200.

SIGURÐUR S. THORODDSEN, VERKFR. M.V.'I.	
VIRKJUN GRIMSÁR	4. blað.
3550 hö. Fall: 24.2-30m Q=11,5 m³/skr.	Málkv.: 1:500, 1:200. A1041.
Skriðuvatnsstífla (miðlun.)	Dregið: 1 des 53.
	Bl.: -/1.