

OUTDOORS

– exploring the blue island

FREE
COPY

SUMMER 2018

SCIENTIFICALLY PROVEN CIRCULATION ENHANCING FABRIC FOR

PAIN RELIEF

i Incrediwear®



SPORT



GYM



LIFE



RECOVER



INCREASE
CIRCULATION



MOISTURE
WICKING



THERMAL
REGULATING



PAIN
RELIEF

AVAILABLE IN LYFJA PHARMASIES, APOTEKIÐ AND IN ÚTILÍF

For your outdoor activity

Be well prepared

Heelen is an icelandic productline that offers simple solutions for problems related to foot injury, and keeps your feet comfortable in any way possible.

All products from Heelen are washable and very easy to use.

Don't suffer! Enjoy, and take Heelen with you on your trip.



In cooperation with Icelandic podiatrists.



You can find Heelen in pharmacies.



Protective skin

Shape as necessary. Reusable and washable.



Foot pad

Protects, with a special cushion for increased pressure/strain



Caps designed for toes

Helps to protect against blisters and sore toes.



Special gel cover for the heels

Protects against sore heels and blisters.

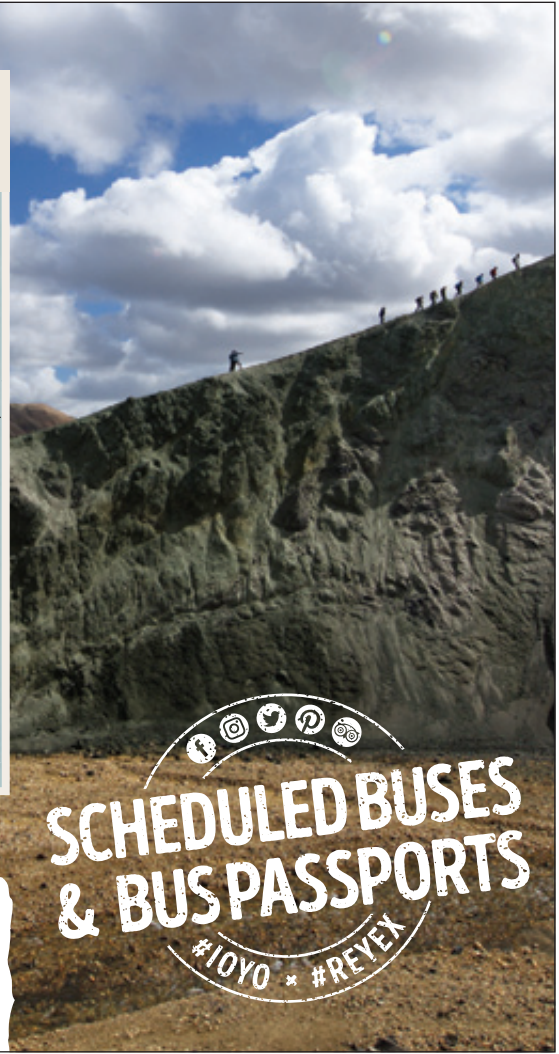
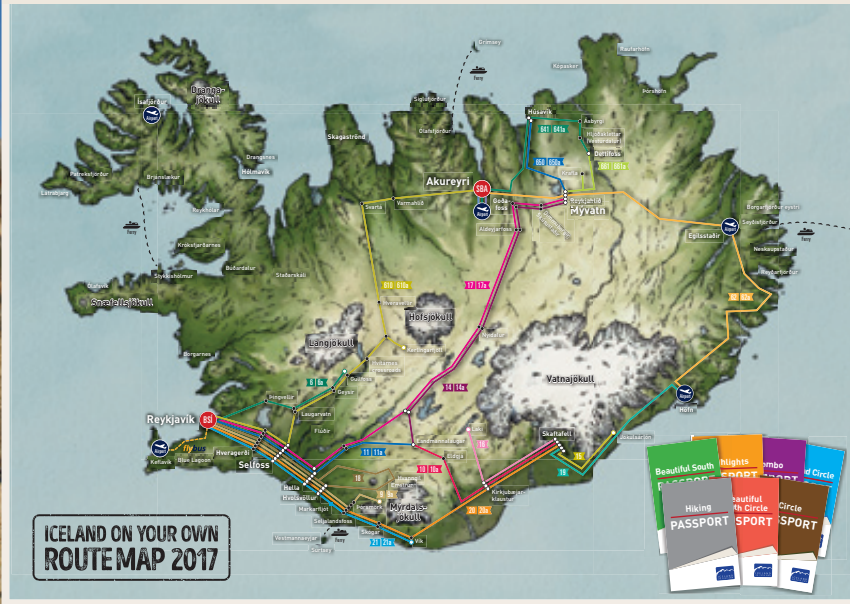


Cover for the side and little toe

Protects against friction with the shoe.

THE LARGEST HIGHLAND BUS SERVICE PROVIDER

* CREATE YOUR OWN ADVENTURE ON WWW.IOYO.IS *



SCHEDULED BUSES
& BUS PASSPORTS
#IOYO * #REYEX

SHARE YOUR MEMORIES
FROM THE ROAD!

FREE
WiFi



BSÍ Bus Terminal • 101 Reykjavík • ☎ +354 580 5400 • main@re.is • www.re.is • www.ioyo.is

We'll take you there!

All the most exciting places in Iceland

FIELDS OF OPERATION

- Day Tours
- Full Group Services
- Flybus – airport transfers
- Incentives & Events – MICE operations
- Iceland on Your Own – scheduled bus network
- Coach Rental
- Enterprise Rent-A-Car
- Hop On – Hop Off Reykjavik City Sightseeing
- Shore Excursions
- Reykjavik Duck Tours **NEW**
- ... and more

FOR FURTHER INFORMATION Please contact us at sales@re.is or visit our website www.re.is



BSÍ Bus Terminal • 101 Reykjavík • ☎ +354 580 5400 • sales@re.is • www.re.is

Contents

Amazing hikes with Útivist	6	The East of Iceland – A unique place on a global scale	54
Wool: Your best friend in Iceland!	8	Wonderful Fjarðabyggð	56
West Iceland – Discover the Saga land!	10	Seyðisfjörður is a quirky and charming artistic hub	58
Krauma: Nature Baths from Europe's most powerful hot spring	11	Stóruð hiking	59
Flatey island: A place to travel back in time	12	Gerpir – The easternmost cape in Iceland	59
Eiríksstaðir: Step back to the Viking Era	12	Borgarfjörður eystri – Worth visiting	59
Glanni Waterfall	12	Neskaupstaður: A horn of plenty	60
Arnarstapi and Hellnar villages	13	Skriðuklaustur – Centre of culture and history	60
See Langjökull Glacier from the inside!	13	Hiking and horseback riding in East Iceland	61
Fantastic pool at Borgarnes	14	Búlandstindur – A beautifully shaped mountain	62
A journey to the center of the earth	14	Randulff's sea house	62
Snæfellsjökull National Park	15	Vopnafjörður village	62
		What to do in East Iceland?	63
The Westfjords– Sea cliffs and narrow fjords	16	The South of Iceland – A nature traveller's daydream	64
A warm welcome at Hotel West	17	Selfoss area– Stay closer to nature	65
Hótel Laugarhóll – A peaceful and comfortable country hotel	18	Þakgil campsite: One of Iceland's best kept secrets	66
The magic of Hornstrandir	18	Húsið folk museum at Eyrarbakki	66
Látrabjarg – One of Europe's biggest bird cliffs	18	The Arnarker cave at Leitarhraun	66
Ósvör Maritime Museum	20	South of Iceland All that you desire is here!	67
Breathtaking Djúpavík	20	Hvolsvöllur sports town	67
Vigur – Paradise Island	20	Kirkjubæjarklaustur: A popular place for tourists to stop	68
Ísafjörður – Easy to reach	21	Vatnajökull National Park	70
Dynjandi: The jewel of the Westfjords	21	Hjálparfoss waterfall	70
Hesteyri offers plenty of beautiful hiking trails	21	Reynisfjara: A must-see in Iceland	71
		Eldheimar volcano museum: An incredible journey!	72
The North of Iceland – Culture, nature, activity	22	A real Country Dream in South Iceland	73
Ásbyrgi Canyon – A wonder of nature	24	Kerlingarfjöll	74
Hof – Cultural and conference center	24	Þingvellir National Park	76
Detifoss: The most powerful waterfall in Europe	24	Vík í Mýrdal: Two large-scale events coming up in 2018	77
The textile museum at Blönduós	25	The Reykjanes Peninsula – Crossing continents	78
Nonni's House Museum	25	Vitinn in Sandgerði: Seafood restaurant by the harbour	80
Seal watching in Hvammstangi	26	Reykjanes peninsula is unique	81
Lake Askja in the crater of a volcano	26	Enjoy Grindavík: A place with something for everybody	82
Skagafjörður a land of adventure!	28	The Cliffs at Krýsuvíkurborg	84
Growing tourism in Dalvík	30	Grænadyngja and Trölladyngja	84
Unique in Iceland - Relax in a Beer Bath	32	The Saltfish Museum in Grindavík	84
Akureyri – a lively and energetic town	34	Driving in Iceland's mountain roads	85
Hrísey: The pearl of Eyjafjörður	36	Salmon and trout fishing in Iceland	85
Hveravellir: Oasis in the highlands	36	The Capital Area – Pure Energy	86
Mývatn's Nature Baths: A completely natural experience	38	Gljúfrasteinn-Laxness museum	87
Fjallabyggð: We'll look after you!	40	Harpa – Reykjavík Concert and Conference Centre	88
Blönduós's outstanding thermal pool	42	Gullkistan: Traditional silverware and jewelry	88
Síglufjörður - buzzing with summer activity	44	Hallgrímskirkja – A dominating landmark	89
SBA Norðurléið – Travel under your own steam	46	The Imagine Peace Tower	90
Events in North Iceland this summer	48	The Capital area – 17 swimming pools!	90
Whale Watching Húsavík	50	The National Museum of Iceland: Making of a Nation	90
Grímsey island – ORBIS et GLOBUS	52	Sægreifinn restaurant: Perennially popular	92
		The warmest gift: A hand-made Icelandic Sweater!	94



OUTDOORS
– exploring the blue island

ISSN 1670-892x

Distributed to tourist
information centres
around Iceland
in the summer of 2018

Publisher:
Athygli
Suðurlandsbraut 30
108 Reykjavík

Editor:
Valþór Hlökkversson
valthor@athygli.is

Designer:
Guðmundur
Þorsteinsson
gulli@athygli.is

Front cover photo:
Silfra in Þingvellir
Photo: Yadid Levy / Norden.org

Advertisements:
Ingibjörg Ágústsdóttir,
inga@athygli.is

Printing: Oddi



Tank up at N1 on your way around Iceland



95 locations
around Iceland



Complimentary
Wi-Fi
at selected N1
service stations

COFFEE & CROISSANT

Treat yourself



Nestlé

LAMB SOUP

Traditional Icelandic meal



Nestlé

VEGAN WRAPS

Great healthy choice



Nestlé

BURGER & FRIES

Our tasty classic



Nestlé



With **95 locations** around Iceland, N1 is always nearby. Find your nearest location and plan your trip at www.n1.is/en.

Keep moving



Amazing



Útivist offers weekend trips, summer vacation tours and day trips.

Útivist is one of Iceland's largest travel association, whose goal is to encourage hiking and travel within the country in a healthy and enjoyable way. Everyone is welcome to join the association, which offers a wide variety of hiking trips and has been a leader in marking trails and building mountain huts, as well as promoting nature conservation.

Útivist offers weekend trips, summer vacation tours and day trips, with buses departing from the Central Bus Terminal in Reykjavík. All tours should be booked in advance at the Útivist website, www.utivist.is.

Some of Útivist's most popular

Básar

Básar in Goðaland is an outdoor paradise in the area known as Þórsmörk. At Básar, Útivist operates a campsite and two large cabins which can accommodate a total of 90 people. These cabins are available throughout the year, if there is space, for use by individuals or groups over shorter or longer periods. Those planning to use the cabins must make advance reservations through the Útivist office.

Fimmvörðuháls

Fimmvörðuháls is an 1,100-m-high mountain pass between the glaciers of Eyjafjallajökull and Mýrdalsjökull, with a popular trail leading from Skógar to Básar. Útivist offers organized trips over Fimmvörðuháls every weekend in summer.

Sveinstindur - Skælingar

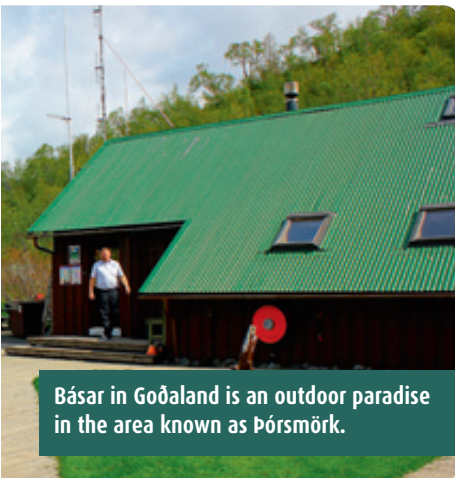
Ride a coach from Reykjavík to Sveinstindur for a one-night stay in the Útivist hut. Hike on the slopes of Sveinstindur with a view over the inland lake of Langisjór and the Fögrufjöll mountains. Stay at the Útivist hut, then hike on to Gjátindur and into Eldgjá canyon, on the way to Lambaskarðshólar. Return by coach via Fjallabak. Gear is shuttled between night stops.





hikes with Útivist

treks are:



Básar in Goðaland is an outdoor paradise in the area known as Þórsmörk.



The Sveinstindur hut was previously used by farmers when gathering their sheep from the highlands, but members of Útivist rebuilt it some years ago.



The Skælingar hut is characterized by the old Icelandic building tradition.

Strútsstígur

Strútsstígur is a new route from Fjallabak, between Lambaskarðshólar/Eldgjá and Hvanngil. This route is a continuation of the popular Sveinstindur < Skælingar route. Gear is shuttled between night stops.

Laugavegurinn

One of Útivist's best-known routes is "Laugavegurinn". This is a five-day trip from the hot-spring area of Landmannalaugar to Básar at Þórsmörk. If desired, you can extend your stay at Básar after the initial four days. Overnight accommodation is in tents or huts along the way. Gear is shuttled between night stops.

Further information is available on Útivist's website, utivist.is, or via e-mail: utivist@utivist.is.

Wool: Your best friend in Iceland!



Olga says wool is a must-have item in Iceland for all seasons: Thin, breathable inner layers for summer and warmer clothes for winter.

Icelanders would not have survived for so long in the cold North Atlantic if not for one thing: Wool. With its unique properties, maintaining heat even while wet, it still remains a crucial element of the local wardrobe, indoors and out, throughout the year.

Thin and light wool is the perfect inner layer

Modern woollen garments have of course evolved. No longer the bulky, scratchy sweaters of old, today's garment is thin, light, and soft to the touch while maintaining its ability of keeping you warm.

The weather can change swiftly in Iceland, and a sunny day can quickly turn to cold and sleet. A thin woollen garment can keep you comfortable, without feeling heavy or overly warm. It is also extremely light and easy to pack, fitting easily into your backpack.

"You can buy expensive, high-tech garments that don't even get close to what the wool provides naturally, and often at a more affordable price. A thin inner layer of wool is crucial to the Icelandic traveller, as the weather can change dramatically in a matter of minutes. For outdoor activities this is extremely important. We all break a sweat while hiking in Iceland's rough terrain and you can quickly become cold when stopping for a break to rest or eat. In such cases a thin inner layer of wool can keep your temperature well regulated, as the wool maintains its heat-keeping properties even while wet," says Olga Ingrid Heidarsdottir, manager of family-run store, Ullarkistan, that specializes in all types of woollen garments.

All types of woollen garments – for all seasons

Ullarkistan provides quality woollen garments for a highly competitive price. "We focus on high quality products, mainly from Norwegian manufacturers Janus and Safa. They produce woollen garments for all ages and activities, thin inner layers for summer and thicker layers and protective clothing for the wintertime. They are mostly made from 100% Merino Wool and are very soft, with a product line that ranges from sportswear to a more classic look."

"We also have a number of excellent products that are a blend of wool and silk. Silk is of course a natural ingredient, and like wool it maintains heat, breaths well and dries quickly. They produce these amazing, thin socks that are perfect for hiking and travelling, I haven't set foot in a cotton stocking since I started using these socks!"

Ullarkistan is now in two locations in Reykjavík: The main shopping street, Laugavegur, and in Skeifan, as well as in Akureyri's main shopping centre, Glerártorg. "We've had many requests on how people can buy our products from abroad and are happy to announce that we have recently opened an online store, soon to be in English," says Olga.

www.ullarkistan.is

Into the Wild with Útivist



www.utivist.is

Mountain huts in the Icelandic wilderness

- Básar hut in Þórsmörk
- Sveinstindur hut
- Fimmvörðuháls hut
- Skælingar hut
- Dalakofi hut
- Álftavötn hut
- Strútsskáli hut

Book now:
Tel. +354 562 1000



ÚTIVIST

Laugavegi 178 - 105 Reykjavík - Tel. +354 562 1000 - utivist@utivist.is

West Iceland

– Discover the Saga land!



www.west.is

Useful links

West Iceland information centre	www.west.is
Snorrastofa, culture and medieval centre	www.snorrastofa.is
Snæfellsjökull National Park	www.snafellsjokull.is
The Icelandic Settlement Centre:	www.landnamssetur.is
The Agricultural Museum of Iceland:	www.landbunadarsafn.is
The Snæfellsnes Travel Association:	www.ffsn.is
Official travel guide to Iceland	www.visiticeland.com
Promote Iceland	www.islandsstofa.is/en





Krauma offers relaxing natural geothermal baths, a cold tub, two calming saunas and a relaxation room.

Krauma: Nature Baths from Europe's most powerful hot spring

Krauma is a SPA with natural geothermal baths, located by Deildartunguhver, Europe's most powerful hot spring. Krauma is open all year round.

Krauma has a total of six baths, five warm and one cold. Two of the baths are large and spacious, another two are shaped like spiral shells (cochlea), and a third is shaped like a large plate where guests can relax in the water while sunbathing. Last but not least is the cold bath (5°C to 8°C) for those who want to jump start their circulation. Krauma has steambaths and outdoor showers, as well as well equipped dressing rooms with locked storages. To maximize the experience, guests can lie or sit down in the relaxation room, enjoying soothing music and a crackling fireplace.

Krauma also has a restaurant, serving light, Icelandic cuisine prepared with the freshest ingredients from the local countryside. It seats 70 people inside, and 60 another out on the terrace when the weather permits.



Deildartunguhver

Deildartunguhver has the highest flow rate of hot springs in Europe, pumping up 180 liters of 100°C (212°F) water per second. Through the ages,, the water was used for cooking and cleaning, but a little over a century ago a nearby farm first led pipes to the house.: The steam allowed people to warm the house and boil food, as well as providing a hot shower and steambath!

Flatey island: A place to travel back in time



Beautifully kept old houses in cheerful colours line the dusty path through the settlement of Flatey island.

Photo: www.west.is

Flatey island is some two kilometers long and about one kilometer wide, of which most is flat land (hence its name, meaning “flat island” in Icelandic), with scarcely any hills to be found. The beautifully preserved hamlet on the island bears witness to the prosperity and optimism prevalent in the area around 1900.

Flatey has long been a favourite of both artists and scholars. One of the oldest and most important manuscripts in Iceland, the Flateyjarbók, was written in the fourteenth century and preserved in Flatey during the Middle Ages. A replica of the book is on display in the Flatey library, the country’s oldest and smallest library, built in 1864.

The island has a hotel, guesthouse, and a restaurant, with daily ferry trips from Stykkishólmur on the Snæfellsnes peninsula and Brjánslækur in the Westfjords.

GPS POINTS N65° 22' 27.394" W22° 55' 5.950"



The museum at Eiríksstaðir is open every day through the summer.

Photo: www.west.is

Eiríksstaðir: Step back to the Viking Era

Eiríkur Thorvaldsson, better known as Erik the Red, was a warrior who lived at Eiríksstaðir in the Haukadalur in the Dales region of western Iceland. He was married to Thjóðhildur and their son Leif the Lucky was the first discoverer of Vinland (later known as North America) in the year 1000AD, the first European to set foot there 500 hundred years before Columbus.

Erik the Red was later outlawed from Iceland and sought safety in the west, settling in Greenland with his family in 985 or 986AD. The remains of his homestead, Eiríksstaðir, were excavated in the middle of the 20th century and again in 1997-1999. A 10th

century dwelling was identified and its remains are visible. A replica building was erected and opened in 2000, to coincide with the 1000th anniversary of Leif the Lucky’s arrival in North America. The place is a living museum and the staff wear period clothing to explain to visitors what life was like a thousand years ago. There are also information displays and Nina Sæmundsson’s statue of Leif the Lucky.

The museum is open daily 09:00-18:00 between the 1st of June and the 31st of August.

GPS POINTS N65° 3' 55.524" W21° 32' 21.214"

Glanni Waterfall

Glanni is an impressive waterfall in Norðurá River. Nearby is Paradise Hollow, a beautiful small oasis. The waterfall is said to be the dwelling place of elves and trolls.

Just before coming to Bifrost village you take a right turn by the sign post Glanni and pass a 9-hole golf course named after the waterfall Glanni. From the car park there is a marked path to a viewing point over the waterfall. A coffee shop is at the car park, open during summer months.

GPS POINTS N64° 45' 13.350" W21° 32' 46.761"



The Glanni waterfall in the river Norðurá is believed to be home to elves and gnomes.

Photo: www.west.is



Fjörhúsið is a cozy café located on a beautiful spot near the coast.

Photo: www.west.is



The Gatklettur in Arnarstapi.

Photo: www.west.is

Arnarstapi and Hellnar villages

These two small villages are located in the southern part of the Snæfellsnes peninsula. They were important trading posts in the past and had a much bigger population than now. A 2,5 km hiking trail connects the two villages where you can see old landing places of fishermen, lots of birds, like the kittiwake, the Arctic tern and the fulmar. If you take a

guided tour, you will also hear a ghost story. A sculpture of Bardur Snæfellsas by Ragnar Kjartansson stands by the beach at Arnarstapi. The seaside and the cliffs between Arnarstapi and Hellnar were designated a natural reservation area in 1979.

The Hellnar church was built in 1945 on a picturesque site where a church was first

raised in 1833. Fjörhúsið is a cozy café located on a beautiful spot near the coast, offering home-cooked seafood. At Hellnar is a hotel, café and visitor's Centre of the National Park Snæfellsjökull.

GPS POINTS N64° 45' 7.304" W23° 38' 45.498"



The ice tunnel and the caves are located high on Europe's second largest glacier, Langjökull.

Photo: www.west.is

See Langjökull Glacier from the inside!

Langjökull (1355m) is the second largest glacier in Iceland. It covers an area of about 950 km² and most of it rises between 1200 and 1300 m above sea level. It rests on a massif of hyaloclastite mountains. They rise highest under its southern and northern parts, but have not yet been researched thoroughly.

Into the Glacier offers various tours to Iceland's most significant new attraction on Langjökull, the man-made ice cave. The ice tunnel and caves are located high on the

glacier. You will get an amazing opportunity to explore the glacier and see it from the inside. This is a once-in-a-lifetime experience where you will be taken to the hidden beautiful ice. Daily departures from Reykjavik, Húsafell and Kaldidalur. More information: www.intotheglacier.is

GPS POINTS N64° 38' 49.235" W20° 34' 9.074"

When in danger
Call **112**



The Borgarnes pool is popular for all ages.

Photo: www.west.is

Fantastic pool at Borgarnes

The swimming pool at Borgarnes in the west of Iceland attracts more than 140,000 visitors every year. The pool is naturally heated with hot water drawn from the Deildartunga hot spring 37 kilometres away in Reykholtisdalur. This is the largest hot spring in Europe and is protected. It produces 180 litres of boiling water every second, which is piped to Akranes and Borgarnes for domestic heating, as well as being routed to the municipal pool in Borgarnes for both the baths and the steam room, something that foreign visitors certainly appreciate. There

are both indoor and outdoor pools, as well as hot tubs and a steam room.

Hot water from the spring is also used to heat greenhouses for horticulture on the farm at Deildartunga which also gives the spring its name.

GPS POINTS N64° 32' 25.682" W21° 55' 19.945"



Vatnshellir Cave is a great example of a lava cave typical to Iceland.

A journey to the center of the earth

Exploring Vatnshellir cave is a truly amazing and unforgettable experience. The 8000 year old lava tube reaches over 200 meters and goes 35 meters below the surface.

The cave is a 10 minute drive west of Arnarstapi, or a 25 minute drive south of

Hellissandur, and is probably the most visited cave in Iceland. Vatnshellir was closed by the Snæfellsjökull National Park a few years ago for protection reasons and is now only accessible through guided tours. All guests will be equipped with flashlights and helmets.

Hiking shoes and warm clothes recommended. Please check on the website www.vatnshellir.is.

GPS POINTS N64° 44' 56.266" W23° 48' 49.244"



The Snæfellsjökull National Park was officially established on the 28th of June 2001.

Snæfellsjökull National Park (Pronounced “snaee-fells-yo-kudl“)

Snæfellsjökull National Park was established in 2001 to protect and conserve the area’s unique landscape, indigenous plant and animal life as well as important historical relics. At the same time, the park is meant to

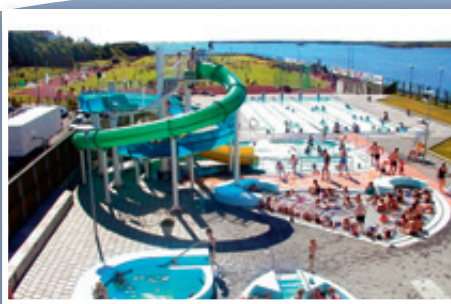
allow visitors easier as well as improved opportunities to get to know the area.

www.snaefellsjokull.is

When in danger
Call **112**

Take a splash in Borgarfjörður!

The geothermal swimming pools in Borgarbyggð welcome you



Quality facilities
– excellent pools, hot tubs,
water slides, sauna, fitness
center and more.

Borgarnes Sports Centre, tel. 437 7140
Kleppjárnsreykir Swimming pool, tel. 430 1534
Varmaland Swimming pool, tel. 430 1520

www.borgarbyggd.is



The Westfjords

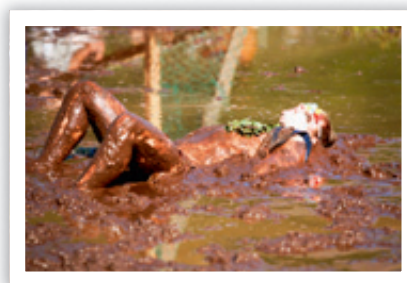
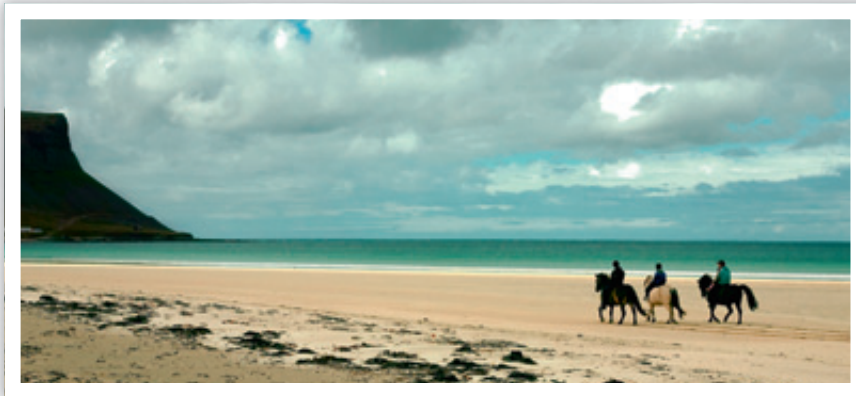
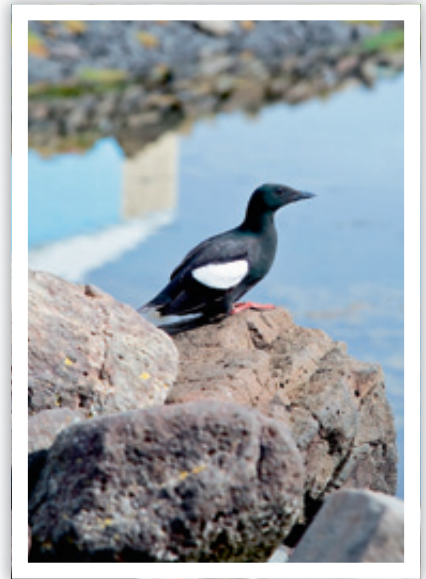
– Sea cliffs and narrow fjords



www.westfjords.is

Useful links

Official travel guide for the area	www.westfjords.is
Hólmavík tourist info	www.holmavik.is/info
West Tours	www.vesturferdir.is
The Gisla Saga Project	www.westvikings.info
An exciting water project	www.vatnavinir.is
Museum of Icelandic Sorcery and Witchcraft	www.galdrasyning.is
Official travel guide to Iceland	www.visiticeland.com
Promote Iceland	www.islandsstofa.is/en





Hotel West is a new hotel in a house with an old soul.

A warm welcome at Hotel West



A relaxing view across the fjord.

In Europe's most westerly town, Patreksfjörður, there is a small family-run hotel offering maximum comfort. In freshly renovated and newly refurbished rooms, Hotel West offers personal service and a rich and healthy breakfast.

Hotel West was founded in 2014 with the aim of creating a relaxing atmosphere for its guests, an environment where they could rest after a day's sightseeing and gather strength for their upcoming tours.

Stunning nature

Although increasingly popular due to its spectacular nature, the area is still far from

being overrun by tourists. Patreksfjörður lies in the southwestern part of the Westfjords, an Earth Check Certified region. Counting less than 700 inhabitants, it is a small fishing village that nonetheless has a swimming pool and a selection of restaurants.

The nature surrounding the village is stunning, from long sandy beaches and creeks to one of Europe's biggest bird cliffs, Látrabjarg; be sure to keep an eye out for waddling puffins and lounging seals. Dynjandi waterfall is a spectacular must-see, and a relaxation in the natural geothermal pool of Hellulaug is a unique experience!

Fresh and newly renovated

During the winter before last, Hotel West added seven new rooms to its ten previous ones. Many rooms offer a great view of the mountains across the fjord and the others a great view up the mountain and valley. The breakfast area and TV lounge were also enlarged to accommodate more people, perfect for relaxing after a day of exploring the area.

www.hotelwest.is

Hótel Laugarhóll

– A peaceful and comfortable country hotel

Hótel Laugarhóll is a peaceful and comfortable country hotel in the east part of the Westfjords. It is located in the green and sparsely populated valley Bjarnarfjörður, midway between Reykjavík and Ísafjörður. The hotel has 16 double rooms, 11 with private bathrooms, and a comfortable living room with free internet access.



At Hotel Laugarhóll you will find The Pool of Gvendur the good, a naturally warm geothermal outdoor swimming pool.

Photo: Ágúst Atlason.

The restaurant at Hótel Laugarhóll is located in a nice and bright dining room with a view across the valley. Special emphasis is

on fresh and tasty homemade local food as well as global cuisine; fish, lamb or vegetarian dishes, spicy soups with home baked bread, crunchy green salads and seasonal herbs from the garden. More information: www.laugarholl.is

GPS POINTS N65° 46' 52.574" W21° 31' 9.141"



Hornstrandir is a magical place of untouched beauty and wildlife and the only way to access this hidden gem is by boat.

Photo: Ágúst Atlason, gusfi.is

The magic of Hornstrandir

Hornstrandir have, in the last few decades, become one of the most popular places in Iceland for outdoor activities. Hornbjarg is the signature cliff towering at the top of Hornstrandir nature reserve. Green lush hills suddenly cut off by sheer cliffs dropping over 500 m straight down into the ocean below.

The last farm in the area was abandoned just before 1950 and for a long time very few people made the arduous trip up there. This has changed dramatically in the last few years.

A very popular way to visit Hornstrandir is by taking a boat from Norðurfjörður to Hornbjargsviti and walk to Hornvík, Hlöðuvík and onwards north, to Hesteyri for example. Others take a boat trip from Ísafjörður or Bolungarvík to Aðalvík, and walk to Hesteyri. The opportunities are really endless and good service for tourists can be found in several places, at Hornbjargsviti lighthouse, for example. More information: www.westfjords.is

GPS POINTS N66° 27' 41.219" W22° 26' 25.161"

Látrabjarg – One of Europe's biggest bird cliffs

Látrabjarg is deservedly the most visited tourist attraction in the Westfjords. This westernmost point of Iceland (and Europe if the Azores are not counted) is really a line of several cliffs, 14 kilometres long and up to 441 m high.

Safe from foxes, the birds are fearless, and provide stunning photographic opportunities from close range. Bird photography for dummies, you might say. The puffins are particularly tame and are the ones frequenting the grassy, higher part of the cliffs.

GPS POINTS N65° 30' 8.760" W24° 31' 46.749"



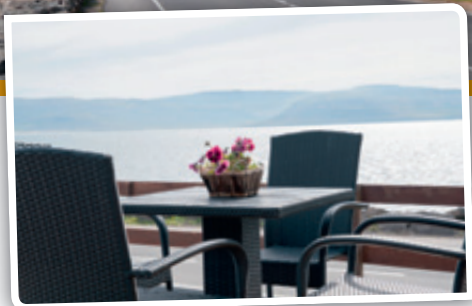
Látrabjarg is the most visited tourist attraction in the Westfjords.

Photo: Ágúst Atlason.

When in danger

Call **112**

112



A warm welcome at **Hotel West**

- Great location and personal service
- Comfortable new rooms in a historic building
- Magnificent natural attractions in the area

Hotel WEST

Aðalstræti 62 - 450 Patreksfjörður - Iceland
Tel. (+354) 456 5020 & (+354) 892 3414

www.hotelwest.is - stay@hotelwest.is - GPS: 65°41.15N 23°35.85W



The Ósvör Maritime Museum gives a realistic picture of the accommodation offered to fishermen of the 19th century.

Photo: Ágúst Atlason.

Ósvör Maritime Museum

The Ósvör Maritime Museum consists of a replica of a 19th century double fishing booth, salt-shed, fish drying platform and a fish drying shed. It also has on display the fishing boat Ölver that represents the type of boats that were used for fishing at earlier times.

The museum gives a realistic picture of the accommodation offered to fishermen in the 19th century, during the harsh winter fishing seasons. Dressed in the traditional

protective clothing, made of skin, the curator guides visitors around the museum, offering a unique glimpse of a long gone past. The museum is located beside the road into Bolungarvík on the east side of the bay.

GPS POINTS N66° 9' 4.919" W23° 12' 49.092"



In Vigur you find the smallest post office in Iceland, as well as the only windmill, and beautifully renovated houses.

Photo: Ágúst Atlason, gusti.is

Vigur – Paradise Island

Vigur is an island in the fjord of Ísafjarðardjúp. The island is about 2 kilometres long and 400 metres wide and is home to many historic buildings including the only surviving windmill in Iceland, built in 1860. To get to Vigur, there is a daily boat tour from Ísafjörður and it takes approximately 3 hours.

Over the years, Vigur has earned itself a great reputation and is a must on any itinerary. Its five friendly inhabitants welcome you with their relaxed easy manner and somehow one feels that time stands still in Vigur. After a half an hour boat ride from Ísafjörður, you take a leisurely walk around the island. It's a perfect opportunity to see the abundance of birds in their natural environment. The island is a home for thousands of birds e.g. eider ducks, arctic terns, puffins, black guillemot and more. More information at www.westtours.is

GPS POINTS N66° 2' 50.725" W22° 49' 42.011"



The historical village of Djúpavík dates back to 1917, when a herring factory was established in this small creek by the fjord Reykjarfjörður.

Photo: Ágúst Atlason.

Breathtaking Djúpavík

Djúpavík is a sheltered bay in the Strandir district of northwest Iceland. It is a remote region, largely untouched by modern developments where silence reigns and nature continues to shape a rugged, mountainous landscape. Djúpavík leapt to fame in the 1930s when a group of businessmen built a herring factory in the bay.

Djúpavík Hotel is housed in a building that was formerly the living quarters for women working in the herring processing factory but fell into disuse many years ago. More information on www.djupavik.com

GPS N65° 56' 39.954" W21° 33' 32.117"

Ísafjörður – Easy to reach

Ísafjörður is the largest town in the Westfjords peninsula, with some 3600 inhabitants. The growth of the town was triggered by salt fish production, and ever since then the fishing industry has been vital for the community. Other industries, such as tourism and the service sector have grown in recent years and decades.

Ísafjörður has a long history and therefore the community has many stories to tell. There are two places that are a must stop in Ísafjörður if you want to know more about the community: The Westfjord Heritage Museum in Ísafjörður is situated in one of four 18th century houses that have been renovated and are now amongst the town's biggest tourist attractions. Another stop which

is a must is the Old Hospital which after renovation in 2002 and 2003 is called The Museum House. The house itself was built in 1925 and now services as a city library, art museum, archive museum and a photography museum.

It is easy to reach Ísafjörður either by car,

by bus or by using the two daily flights from Reykjavík. In Ísafjörður you will find the regional tourist information office for the Westfjords.

GPS POINTS N66° 4' 29.962" W23° 7' 31.437"



The Westfjord Heritage Museum in Ísafjörður is situated in one of four 18th century houses downtown Ísafjörður.

Photo: Agúst Atlason.



Dynjandi falls bears its name with pride.

Photo: Ágúst Atlason, gusti.is

Dynjandi: The jewel of the Westfjords

From Dynjandisheiði heath in the west the great waterfall of Dynjandi tumbles, one of the most spectacular waterfalls in the country. It falls of the edge off a mountain some 99 metres down. The Icelandic term dynjandi means thunderous or resounding and you will understand why when you hear its thundering roar.

Reaching Dynjandi requires a bit of a hike, although no more than 15 minutes or so, and on the way up you can stop by six smaller waterfalls: Hæstahjallafoss, Strompur, Göngumannafoss, Hrísvaðsfoss-Kvíslarfoss, Hundafoss and Sjóarfoss.

GPS POINTS N65° 44' 11.214" W23° 12' 31.185"

Hesteyri offers plenty of beautiful hiking trails



Hesteyri is located directly in the middle of the untouched nature of the West Fjords.

Hesteyri is a deserted fishing-village with its golden age about 100 years ago. In 1952 the last of its inhabitants moved away. Today the village serves as a summer restort for locals and offers plenty of beautiful hiking trails. The landscape is shaped by steep cliffs, desolate, valleys and rocky high plains. Large colonies of seabirds breed here and polar foxes hunt undisturbed. Fans of Icelandic crime writer Yrsa Sigurðardóttir will recognize it as the site of one of her most chilling novels, I remember you.

Hesteyri is only reachable by boat from Ísafjörður and Bolungarvík for 10 weeks during the summer, between the middle of June and the end of August. Traditional

Icelandic refreshments are served at the old Doctor's house, which also serves as a primitive guesthouse.

GPS POINTS N66° 20' 4.626" W22° 52' 33.864"

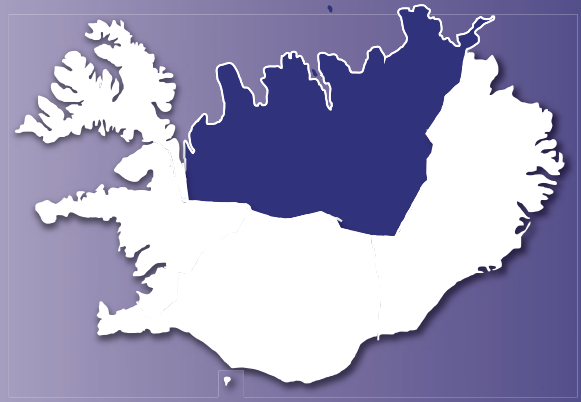
When in danger

Call **112**



The North of Iceland

– Culture, nature, activity



www.northiceland.is

Useful links

Official travel guide for the area	www.northiceland.is
Akureyri tourist guide	www.visitakureyri.is
Akureyri Art Museum	www.listasafn.akureyri.is
Hof Cultural and Concert Centre	www.mak.is/en
Whale Museum in Húsavík	www.whalemuseum.is
Akureyri Museum	www.akmus.is
Grímsey island	www.grimsey.is
Hrísey island	www.hrisey.is
Official travel guide to Iceland	www.visiticeland.com
Promote Iceland	www.islandsstofa.is/en



AKUREYRI

CAPITAL OF THE SHINING NORTH



www.visitakureyri.is

Hof Cultural and Conference Center | 600 Akureyri | tel. 450 1050 | info@visitakureyri.is

Ásbyrgi Canyon – A wonder of nature



Many hiking tracks are in the vicinity of Ásbyrgi.

Photo: Jóhann Ólafur Halldórsson.

Ásbyrgi is a wonder of nature, a forested horse-shoe shaped canyon in Öxarfjordur. Ásbyrgi is a part of Jökulsárgljúfur site within the Vatnajökull National Park, reachings from highway 85, by Ásbyrgi south to Dettifoss, covering an area of 120 km².

Gljúfrastofa is the Visitor and Information Centre for the Northern Territory of Vatnajökull National Park. The visitor centre also houses a souvenir shop, and has an interesting exhibition on geology and the nature of Jökulsárgljúfur canyon and its environs, which graphically informs guests about plate boundaries, volcanism, biospheres and habitats, the power of glacial floods, the formation of Ásbyrgi canyon, and the interaction of humans with the might of nature.

More information: www.northiceland.is

GPS POINTS N66° 0' 58.039" W16° 29' 53.872"



Hof is a cultural building designed for music and other performing arts, as well as top-notch facilities for conferences and meetings, receptions, parties and exhibitions.

Hof – Cultural and conference center

The Hof Cultural Centre is located in the centre of Akureyri and is one of the town's landmarks. Hof is designed for music and other performing arts, as well as offering top-notch facilities for conferences and meetings, receptions, parties and exhibitions. The building has two larger conference auditoriums and a comprehensive restaurant service. Hof has first-class facilities for events of various kinds and the best available technical equipment. The building was opened in August 2010.

At The Tourist Information Centre at Hof you can find information brochures, book accommodation and tours or buy maps, hiking maps, postcards, stamps and more. They also have computers and phones available for tourists to use. More information: www.visitakureyri.is

GPS POINTS N65° 41' 0.285" W18° 5' 14.508"

Dettifoss: The most powerful waterfall in Europe

The Dettifoss waterfall has the greatest volume of any waterfall in Europe: 500 cubic metres of water plunge over the edge each second. Dettifoss is 45 m high and 100 m wide. A 34 km hiking trail goes along the canyon from Dettifoss to Ásbyrgi.

The Jökulsa Canyon has parallel roads on either side, stretching from Ásbyrgi in the north towards Mývatn in the south. With Dettifoss in the middle, you have four options of approaching it (SW, SE, NW, NE). The only tarmac road is from the southwest, so in the winter this is usually the best option. But in the summer we recommend approaching from the northwest, as this gives you the chance to see Ásbyrgi and Hljóðaklettur on the way.

The conditions of gravel roads in Iceland can vary, so travellers are asked to be aware



Straggling a 100 metre wide abyss, Dettifoss plummets 45 metres to the craggy shores below.

of road conditions at any time and adjust driving speed to the conditions.

GPS POINTS N65° 48' 53.801" W16° 22' 59.766"

The textile museum at Blönduós

The textile museum in Blönduós is one of Iceland's oldest museums, established in 1976. It was originally housed in a former cowshed and barn alongside the town's domestic college and a significant step was taken when the museum moved to purpose-built premises in 2003.

The museum welcomes around 3000 visitors every year, most of them during the summer. The museum focuses on how men and women in the past worked with textiles when this was a domestic industry that produced valuable goods from wool. The museum has permanent exhibitions and one of these is dedicated to embroidery, showing delicate female undergarments from the past, as well as crocheting and tatting. Another



The Textile Museum in Blönduós exhibits a unique collection of homemade wool and textile items.

display focuses on Icelandic wool and its production. The museum has at its disposal a variety of national dresses, including both formal and for daily wear.

More information: www.textile.is

GPS POINTS N65° 39' 43.057" W20° 17' 36.436"



Nonni's House is a cozy museum where you will get a warm welcome. Photo: www.northiceland.is

Nonni's House Museum

Nonni's House is among Akureyri's oldest houses, built in 1850. It was the childhood home of the writer and Jesuit priest Jón Sveinsson, „Nonni”, who wrote 12 books for children. He wrote in German but his books have been translated into more than 40 languages.

Today it is a memorial museum where many items connected with Nonni and his ever popular novels, in such diverse languages as Japanese and Esperanto, are kept. Books by Jón Sveinsson in several languages are sold in the museum. From the age of 12 Nonni lived and worked in Germany, France, Denmark and the Netherlands.

GPS POINTS N65° 40' 1.255" W18° 5' 8.589"



Thermal pool & Fitness Center

Summer opening hours

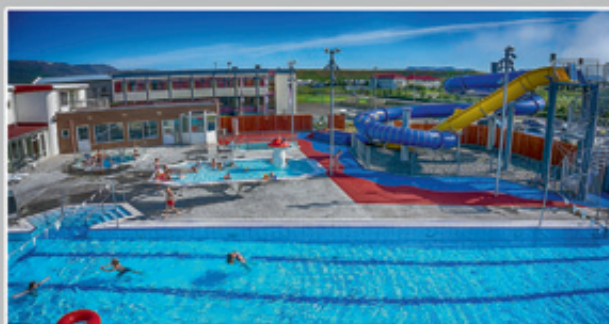
June 1st to August 20th

Mondays - Fridays
8:00 - 21:00

Saturdays and Sundays
10:00 - 20:00

Please note:

- There is no admittance 30 minutes before the listed closing time.



www.imb.is

Tel: 452 4178



Seals are delightful animals.

Seal watching in Hvammstangi

The Icelandic Seal Centre in Hvammstangi was established in 2005. The Seal Centre is housed in the historically interesting and attractive premises of VSP in Hvammstangi. Here you will find informative exhibitions on the seal and its habits, seal hunting and the utilisation of seal-related products, besides stories and folklore surrounding this fascinating creature.

Last year the Icelandic Seal Centre

welcomed a total number of 42,481 guests. The West Húnathing information centre shares the same building. There is also a souvenir shop and a coffee shop. The Centre is open all year round and its opening hours during the summer are every day from 09:00 to 19:00. More information: www.selasetur.is

GPS POINTS N65° 23' 45.482" W20° 56' 48.116"

Welcome to Hrisey!

The House of Shark Jörundur



In the oldest house on the Island a museum has been set up where you can learn about the history of shark fishing and the story.

It also houses the Tourist information which is open 1pm to 5 pm from the start of June until the end of August.

Further information: E-mail: hrisey@hrisey.is

Tel. +354 695 0077 - www.hrisey.is

Lake Askja in the crater of a volcano



Öskjuvatn is a lake situated in the crater of the volcano Askja.

Askja is a 50 km² caldera in the Dyngjufjöll mountains a part of the Vatnajökull National Park. The mountains emerged in eruptions under an Ice Age glacier cap. Askja itself was formed, for the most part, at the end of the Ice Age in a major ash eruption which caused the roof of the magma chamber at the heart of the central volcano to subside.

Öskjuvatn (Lake Askja) is situated in the crater of the volcano Askja. Its surface area is about 11 km². With a depth of 217 m (712 ft), it is the second deepest lake in Iceland after Jökulsárlón. It was created by an enormous volcanic eruption in 1875. Askja erupted a few times in the 1920s, but the latest eruption was in 1961.

GPS POINTS N65° 3' 7.099" W16° 42' 37.091"

When in danger

Call **112**

112



SKAGAFJÖRÐUR

HOME OF THE NORTH



Enjoy the adventure!

Skagafjörður invites you to delight in the adventure of a lifetime. Sailing down a glacier river, horseback riding trip, trekking mountain, luxuriating in awesome nature or enjoying other leisure activities that the district offers.

History, singing, cheer and good food are always close at hand in Skagafjörður.

Welcome to
Skagafjörður



Visit us or contact the Tourist Information Centre at Varmahlíð, it's open year-round.
+354 455 6161, info@visitskagafjordur.is, visitskagafjordur.is

Skagafjörður

a land of adventure!



Skagafjörður is truly a land of adventure for all. Offering a wide variety of activities set in beautiful surroundings. Whether you wish to go white water rafting down foaming glacial rivers; helicopter skiing on the Tröllaskagi mountain range; horse riding in an amazing and unique landscape; sailing to the majestic island of Drangey; relax in a natural hot spring; enjoy the magic of the northern lights in the winter stillness; indulge in excellent food prepared from local produce... Or just lay back and relax and enjoy the stay - there are many diverse accommodation options available for you to choose from.

Skagafjörður has a rich cultural heritage and an abundance of historical sites. The Skagafjörður Heritage Museum engages in exhibitions, conservation and research. In the old turf farmhouse at Glaumbær, the museum has for over half a century been showing visitors what 18th and 19th century life was like in rural Iceland. There are also numerous other institutions and exhibits which are interesting to visit, for example the Icelandic Emigration Centre in Hofsó, the Víðimýrarkirkja turf church near the village of Varmahlíð, the Minjahúsið museum in Sauðárkrúkur, the Skagafjörður Transport Museum and the historical bishop's seat of Hólar in Hjaltadalur valley.

Skagafjörður's unique interplay of nature, history and culture makes it an exciting destination, offering a wide variety of experiences for your holiday. The heritage of stories occurring locally, such as the Saga of Grettir the Strong, the Saga of the Sturlungs and numerous folktales, in addition to the many cultural relics, will make your vacation fascinating and memorable.

visitskagafjordur.is

Tourist Information Center in Varmahlíð

The Tourist Information Center in Varmahlíð is open all year around. There you can obtain maps, books of photographs, and brochures.

Free access to the internet.

Tel: +354 455 6161

info@visitskagafjordur.is



Growing tourism in Dalvík



The Berg Cultural Centre in Dalvík is hosting exhibitions all summer. It also houses a coffee shop and information point for tourists.

'The travel business is growing in the area, with new and exciting developments alongside the more traditional tourism that has flourished here for a long time. I'd like to direct visitors towards the information point that was opened in the Berg Cultural Centre, with varied information available, whether you are seeking relaxation or travel opportunities in the Dalvík district,' said Margrét Víkingisdóttir, the Dalvík municipality's information officer.

Beer baths

New and a truly unique addition to the tourism industry in Dalvíkurbyggð are the newly opened Beer Baths, the only ones of their kind in Iceland. There, you can relax in a big tub, made of Kambala wood, filled with beer, water, yeast and hops. The beer used in the baths comes from Kaldi, a local micro brewery, located nearby and that is owned by the same people as the Beer Baths.

The Great Fish Day

As in previous years, the Fish Festival on the 11th of August and the programme around it in the week leading up to the festival Saturday is the high point of the summer in Dalvík. At the Great Fish Day guests are invited to a sea food buffet between 11:00 and 17:00 at the harbour in Dalvík, and there is an outdoor concert during the evening that ends with fire works.

www.dalvikurbyggd.is

www.visittrollaskagi.is



The Fish Festival on the 8th to 11th of August is the high point of the summer in Dalvík.



www.bjorbodin.is

Unique experience

THE BEER SPA - Ægisgata 31 - 621 Árskógssandi
Telephone: +354-4142828 - Email: bjorbodin@bjorbodin.is

OPENING HOURS
The Beer SPA is open daily from 10-22 during the summer months, opening at 12 in the winter.



BJÓRBÖÐIN
• SPA •

Unique in Iceland Relax in a Beer Bath



Take in the view in our open-air hot tubs.

The Beer SPA in Árskógssandur by Eyjafjörður opened in 2017 and is based on a Czech model. Unique in Scandinavia, it has been very popular, offering a unique form of relaxation by the polar circle - as well as great food and service.

Beer Baths are very healthy and have a revitalising effect on

both skin and hair as the water is rich in vitamins, oils and minerals. Each Kambala wood tub can fit two people and is located in a private room. The fresh bathwater is comfortably warm and composed of clean water from the mountain above the SPA, hops from Kaldi beer, young beer, and brewers' yeast. Guests relax in the tub for 25 minutes, sipping on locally brewed Kaldi beer if they so wish, before entering the Relaxation room for another 25 minutes.

The Beer SPA also has an outdoors hot tub and sauna, where you can enjoy the spectacular view across the ocean and the mountains by Eyjafjörður, before enjoying a good beer-themed meal at the restaurant and bar. The Beer SPA is open daily from 10-22 during the summer months, opening at 12 in the winter.



At the restaurant.



Guests can enjoy the Relaxation room following their revitalising beer bath.

www.bjorbodin.is



The Beer Spa in Árskógssandur by Eyjafjörður



FJALLABYGGD.IS
VISITTROLLASKAGI.IS



≡≡≡ **2018** ≡≡≡

WELCOME TO SIGLUFJORDUR & OLAFSFJORDUR

**20
MAY**

**100TH ANNIVERSARY
OF SIGLUFJORDUR**

**2-3
JUNE**

**SEAMAN'S DAY
FESTIVAL IN OLAFSFJORDUR**

**17
JUNE**

**ICELAND NATIONAL DAY
IN OLAFSFJORDUR**

**4-8
JULY**

**FOLKMUSIC FESTIVAL
IN SIGLUFJORDUR**

**4-8
JULY**

**THE NORDIC COAST
CULTURE FESTIVAL
IN SIGLUFJORDUR**

**28
JULY**

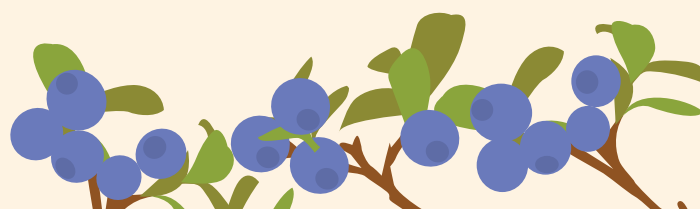
**BOATING DAYS
FAMILY FESTIVAL
IN SIGLUFJORDUR**

**15-19
AUGUST**

**BERRY DAYS
IN OLAFSFJORDUR
CLASSIC MUSIC FESTIVAL**

**SEPTEMBER
/OCTOBER**

**POETRY FESTIVAL
IN SIGLUFJORDUR**



www.visitakureyri.is

Akureyri

- a lively and energetic town

Akureyri is situated in north-east Iceland, in one of the longest fjords in the country and is surrounded by mountains reaching 1000-1500 m. The Arctic Circle is only 60 km north of Akureyri but still the climate is mild, with summer temperatures up to 25°C and winter temperatures on average around 0°C.

Akureyri is the second largest urban area after the capital area of Reykjavik, with a population of about 18.800. Akureyri is the centre of trade and services in northern Iceland. It is also a town of culture and education, building on a firm foundation.

Akureyri is a popular tourist destination for short or long visits. The town offers a wide range of activities and interesting places e.g. notable museums, the world's most northerly botanic garden, one of

Iceland's most popular swimming facilities, 18-hole golf course, the best skiing area in the country, good hiking trails and a free city bus. Our guests can choose between varied accommodation and an excellent range of restaurants, some of which specialise in local food.

The islands Hrísey and Grímsey are a part of the municipality of Akureyri. Both islands are ideal for bird watching. The atmosphere is calm and relaxing and a visit can be an unforgettable experience. The town is also a good base for many of Iceland's most beautiful natural wonders such as waterfalls, volcanic areas and canyons as well as exciting activities like river rafting, hiking, fishing, whale watching and horse riding.



Bird Watching

Many good places for bird watching are within Akureyri and its surroundings. In total there are 11 sites, that all provide favourable conditions, easy access, and services. Within the town limits you find three sites: Krossanesborgir, Naustaborgir and the estuary of the river Eyjafjarðará, called Óshólmar.

A booklet with information on all 11 birdwatching locations in Eyjafjörður has been published. The booklet can be purchased e.g. at the Tourist Information Center in the Hof Cultural and Conference Center. Also in Hrísey in "Hús Hákarla Jörundar".



HIGHLIGHTS OF AKUREYRI

Akureyri has a lot to offer, below we list some of the many things we recommend our guests to do while in Akureyri.

- » The Botanic Garden – most of the Icelandic flora as well as about 7000 foreign plants
- » The Art Museum and Art Street (Kaupvangsstræti)
- » Sundlaug Akureyrar – outdoor swimming pool, 2 pools, hut tubs, play areas and waterslides
- » Whale watching from the pier below center of town
- » Restaurants – promoting local food
- » Kjarnaskógur – wood, trails and playgrounds
- » The old town – old houses and museums
- » Golf course – The northern most 18-hole golf course and the competition “Arctic Open”
- » Glerárgil – canyon and trails
- » Hrísey – small island, village, culture and trails
- » Akureyri Town Festival – end of August each year
- » Beer from Viking and Kaldi – Local breweries
- » Ice-cream – locals’ favourite is the ice-cream shop Brynja
- » Akureyrarkirkja – church, design and interior
- » Hlíðarfjall – The best skiing area in the country
- » The hidden world of Akureyri – hidden beings, elves and dwarves
- » The Arctic Circle, in the island Grímsey (25 min flight from Akureyri or ferry from Dalvík)



Hveravellir: Oasis in the highlands

Hveravellir is one of Iceland's most popular highland oasis, whether you are driving, hiking, or riding the Icelandic horse. The area offers various hiking trails through the wonders of the lava field or the spectacular mountain slope. And for those in need of recharging and relaxing just a simple chill in the warm nature pool followed by a cup of hot chocolate and a slice of cake in the Internet Café might be just the thing!

GPS POINTS N64° 51' 58.804" W19° 33' 42.403"



Iceland's geothermal areas are magnificent places, where you can see bubbling hot-pools and exploding geysers.

Photo: www.northiceland.is

Hrísey: The pearl of Eyjafjörður



A group walks around the eastern part of Hrísey.

Hrísey is a small island in North Iceland. It is only 35 kilometers drive from Akureyri to the little village of Árskógssandur where the ferry to Hrísey takes off every 2 hours. It's easy to remove yourself from the daily grind in this little coastal community of 170 people.

Lighthouse trips are also very popular (for groups only). The view is spectacular from the site of the lighthouse and the midnight sun sailing on the horizon in the middle of

summer, simply takes ones breath away. Each trip can take 1,5 to 2 hours. All lighthouse trips are guided and must be ordered in advance.

The island has a variety of walking routes and the eastern part of Hrísey is renowned for its natural beauty. Information points are in place for all of the walks and guided walks are also available. A visit to the swimming pool after a walk is recommended, as the pool offers a unique view over Eyjafjörður fjord, with the chance of seeing whales swimming past. Hrísey is also an excellent place for a swim in the sea.

Hákarla-Jörundur's (Shark-Jörundur's) house is home to an exhibition dedicated to shark fisheries off Iceland, and Hrísey's history can also be seen there in words and pictures. The house is open every day during summer and also includes a tourist information centre.

Hrísey holds its family festival from the



Hákarla-Jörundur's (Shark-Jörundur's) house is home to an exhibition dedicated to shark fisheries of Iceland.

13th to 14th of July this year. The Hrísey Festival has been held every year since 1997 and is one of the most popular of its kind in the country.

www.hrisey.is

When in danger

Call **112**



MYVATN NATURE BATHS



RELAX
ENJOY
EXPERIENCE

www.naturebaths.is
[#myvatnnaturebaths](https://www.instagram.com/myvatnnaturebaths)

The Nature Baths at Mývatn are open every day, all year round. Altogether, the lagoon and the basin contain around 3.5 million litres of water with a temperature of 36-40°C.

Mývatn's Nature Baths:

A completely natural experience



'There are visitors all through the year,' says Heiða Halldórsdóttir, marketing manager at the Mývatn Nature Baths. Last year a record setting 218,000 people paid a visit, an increase of 34% from the previous year. All the indications are that this year will see yet another record set.

Relax in the hot pool

The Nature Baths at Mývatn are open every day, all year round. Anyone who wants to relax in the hot pool is welcome, or else they can take advantage of the natural steam while taking in the unique beauty of their surroundings. The temperature in the hot pool

is normally 36-40°C. The water in the pool contains high levels of minerals, is alkali and highly suitable for a dip. The composition of the water means that bacteria and growth do not survive, so there is no need to chlorinate the water or to use other disinfectants. Pure natural steam found nowhere else is used in the saunas. The changing room facilities are first class and visitors can relax at the Kaffi Kvika café while they enjoy the view of Mývatn's beauty.

Even better facilities

The Nature Baths are adding new reception and changing rooms to meet the increased

demand as visitor numbers have swelled in recent years. According to Heiða Halldórsdóttir, it's important to respond to changing demands.

'It was clear that our existing facilities were not enough to provide for all the guests coming to the Nature Baths,' she said. The developments will entail some changes to the pool itself, which is extensive, measuring 2100 square metres, with a 900 square metre overflow pool.

www.jarbdodin.is



Fjallabyggð: We'll look after you!



The Ólafsfjörður swimming pool offers outstanding family facilities.

The towns of Ólafsfjörður and Siglufjörður form the Fjallabyggð municipality and are linked by the Héðinsfjörður tunnel. Fjallabyggð's magnificent landscape offers many walking opportunities in both valleys and higher up the slopes, in an exceptionally peaceful environment with practically endless relaxation possibilities. There is sea and river fishing, as well as the chance to spin a line from one of the quaysides. There are also midnight sea trips, kayaking, surfing and much else. Fjallabyggð has two nine-hole golf courses, two swimming pools, one of which is open-air, with hot tubs, shallow pools and two water slides.

This summer's new fishing boat festival

There are plenty of events taking place in the Fjallabyggð region this summer. The first weekend in July sees the annual folk music festival taking place in Siglufjörður and the family fishing boat festival is expected to have the town buzzing with activity, with rod and line fishing, sailing and various cultural and artistic activities taking place.

Siglufjörður is always lively on the Bank Holiday weekend in August and Ólafsfjörður's Berry days are also held in August with classical music recitals. The Haustglæður poetry festival is held in Siglufjörður in September, with well-known poets and artists expected to appear.



The Herring Museum is one of the most remarkable historical collections in Iceland.

Fjallabyggð's cultural life

Fjallabyggð has a booming cultural scene. A number of restaurants offer varied menus and there are plenty of places to stay. There are several galleries and artists' workshops that are worth visiting, as are the various museums and collections. Among these is one of the most popular among visitors, the Herring Museum, which is home to one of the largest maritime and industrial collections in the country. The natural history museum in Ólafsfjörður has more than a hundred birds on exhibit. The Folk Music Centre presents Icelandic folk music in a pleasant and accessible manner, including displaying videos of people of all ages signing, reciting or playing instruments, as well as being home to the Reverend Bjarni Thorsteinsson's collection of folk songs.

Music by the sea

Siglufjörður will celebrate its centennial as a township on 20 May and July will see the popular annual Folk Music Festival (4-8 July). At the same time as the Folk Music Festival, another exciting festival will take place in Siglufjörður: The Nordic Coast Cultural Festival (Nordisk Kustkultur). The theme of the 2018 festival is: Music by the sea. Participants will arrive from all over the Nordic countries, travelling in part by boat, and events of the festival will include lectures, exhibitions, craft exhibitions, concerts, theatre and dance numbers. There will also be a symposium on the Nordic coastal culture.

**Welcome to
Siglufjörður &
Ólafsfjörður 2018**

May 20th 100th anniversary of Siglufjörður
 June 2-3th Seaman's Day Festival in Ólafsfjörður
 June 17th Iceland national day in Ólafsfjörður
 July 4-8th Folk Music Festival in Siglufjörður
 July 4-8th The Nordic Coast Cultural Festival in Siglufjörður

July 28th Boating days, family festival in Siglufjörður
 Aug 15.-19th Berry days in Ólafsfjörður, a classic music festival
 Sept/oct Poetry Festival in Siglufjörður



A summer's day in the centre of Ólafsfjörður.



Ólafsfjörður is increasingly becoming a destination for surfers to battle the waves.





Blönduós has a fine swimming pool, with slides, a paddling pool and hot tubs.

Blönduós's outstanding thermal pool

Blönduós has a great swimming pool for everyone, especially families with children. The swimming pool is 25 x 8.5 meters and the pool area also has two hot tubs, steam bath, waddle pool for children, ice bath, two large water slides and a lot of toys.

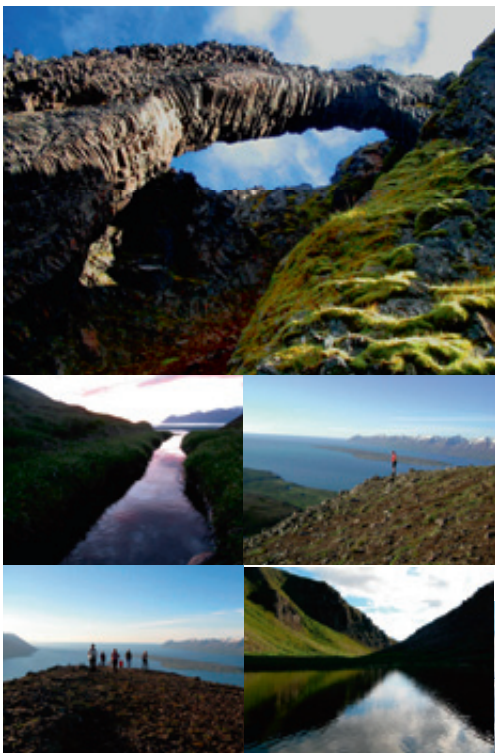
Natural resources are used in the swimming pool. Chlorine is produced on site and table salt is the only ingredient needed

in the production apart from electricity and water. Chlorine gas is produced and put directly into the disinfection system and the system also produces chlorine water used to meet daily fluctuations in usage. The device is the first of its kind in Iceland. The main advantages of the new system are: No transfers between locations of hazardous substances, chlorine odour is reduced, redness

in eyes and skin irritation is reduced, Eco-friendly for the staff and promotes Eco-friendly environment.

The Blönduós swimming pool is open in summer Mondays to Fridays 08:00-21:00 and Saturdays and Sundays 10:00-20:00.

www.imb.is



Welcome to Dalvík

A Natural Paradise in Tröllaskagi (The Trollpeninsula)

For those wanting to experience nature first hand, Dalvík is a great place. Whale watching, bird watching from sea and land, angling and sea angling, golfing, horseback riding and a good swimming pool is just an example of what Dalvík can offer tourists. Several hiking trails are available, both for experienced hikers and those who prefer more relaxed routes. Mountain guides offer shorter and longer hikes.

One can also experience Icelandic culture through Hvoll Folk Museum and Berg Cultural House.

Restaurants, coffee houses and pubs take care of hungry travellers. The Great Fish Day, 9th-12th of August, is a famous fish festival where on the 11th of August fish dishes can be tasted for free.

There are several options in accommodation such as a hotel, cabins and guesthouses as well as camping places.

For further information visit

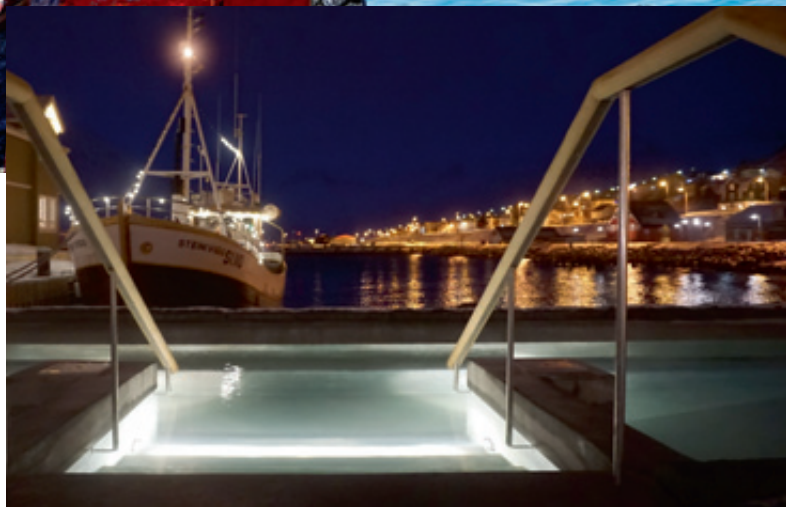
www.visittrollaskagi.is

www.dalvikurbyggd.is

Information centre is located in the Berg cultural house.



EMBRACE THE CULTURE
AND ENJOY THE MOMENT



SIGLÓ HÓTEL

www.siglohotel.is

Snorrögötu 3b • 580 Siglufirði • Telephone 461-7730



Sigló Hótel is at the heart of the town and offers the best in accommodation and dining.

Photo: Sigló Hótel.

44

OUTDOORS 2018

Siglufjörður

buzzing with summer activity

Siglufjörður has a great deal more to offer with the opening of the Sigló Hótel and the Rauðka and Hannes Boy restaurants. Sigló Hótel's manager, Finnur Yngvi Kristinsson, says he is confident of a busy summer as the flow of foreign visitors grows alongside the music events taking place this summer at Rauðka.

Good prospects for this summer

Finnur says that the prospects are looking positive for the upcoming summer, both for the hotel and the restaurant trade.

'Our business changes over the summer as there is an increasing number of overseas visitors, coming both in larger groups passing through and as independent travellers,' he said, commenting that apart from the Hannes Boy and Rauðka restaurant, there is also the hotel's own Sunna restaurant.

'The hotel bar is becoming increasingly popular, not least as it offers a unique opportunity to take in the buzz of activity around the small boat harbour beyond the hotel's windows.'

More relaxation options

The variety of options for relaxation for those visiting Siglufjörður is growing all the time. The Herring Museum has long been well known, but also worth the visit are the Folk Music Centre and the Segull brewery. For those in possession of a sweet tooth, the Chocolate Coffee House, opened last year, is also a must-see.

This summer sea kayaking will be made available. 'Then there's the choice of walking routes in the district and next summer we're opening a nine-hole golf course where the turf is now establishing itself after last year's developments. The variety is constantly being added to and what we are able to offer visitors is growing alongside it,' says Finnur.

www.siglohotel.is



Siglufjörður's town centre is a friendly place and when the sun shines it's great to relax and take in the atmosphere.



Life around the small boat harbour, and the Hannes Boy and Rauðka restaurants

SBA Norðurleið

– Travel under your own steam



SBA-Norðurleið is one of Iceland's largest coach and bus operators, offering visitors the opportunity to travel independently or in organised groups, with both one-day and longer trips. A Full Circle ticket is available that takes in many of the main attractions and the company also offers one to three-day trips from Akureyri, with or without a guide. There are scheduled routes daily between Reykjavík and Akureyri, over the highlands along the Keel route during the summer and also scheduled routes from Akureyri that take in Mývatn, Egilsstaðir and Höfn.

Sightseeing trips from Akureyri offer Mývatn, Dettifoss and Jökulsárgljúfur. The Lake Mývatn Excursion and the Grand Dettifoss Tour are popular guided tours that include a visit to Goðafoss, on the way to Mývatn, with opportunities to visit the Dimmuborgir lava formations and the pools at Grjótagjá on the way, as well as the fissures at Víti, the hot mud pools at Hverarönd and the Mývatn

natural baths and finishing in Akureyri. The Grand Dettifoss Tour starts with Goðafoss before moving on to Mývatn and the main attractions in the region and Dettifoss, the Jökulsárgljúfur National Park before returning to Akureyri via Ásbyrgi and Húsavík

Iceland on your own - Full Circle Passport

Organise your own trip with a Full Circle Passport. This allows visitors to travel at their own speed, deciding for themselves how long they want to stop in any particular place. This allows travellers to visit Goðafoss, Mývatn, Skaftafell and Jökulsárlón, while also calling at towns including Reykjavík, Akureyri, Egilsstaðir and Selfoss.

www.sba.is



Mývatn Nature Baths.



Dimmuborgir by Mývatn.



Dettifoss is the most powerful waterfall in Europe.

Events in North Iceland this summer

20-27th June	Arctic Open - midnight golf tournament, Akureyri.	29th July	Mærudagar festival, Húsavík.
23-24th June	Blue North blues festival, Ólafsfjörður.	29-30th July	Fishing boat festival, Siglufjörður.
23-24th June	Midsummer Magic,	10-11th August	The Great Fish Festival, Dalvík.
24th June-24th August	Akureyri Art Summer,	9-12th August	Arctic Handcraft and Design festival, Hrafnagil school.
4-8th July	Folk Music festival, Siglufjörður	12th August	The Jökulsár run.
13-14th July	Hrísey Festival.	18-19th August	Grenivík festival.
14-16th July	Húnavaka, Blönduós.	11-13th August	Hólar festival.
20th-22nd July	Medieval Days at Gásar.	19th August	Quiet Countryside, Skagafjörður.
26-30th July	Eldur family festival, Húnathing.	24-25th August	Cultural Night, Akureyri.





 /arctictrip
 /arctictrip.is

*Welcome to
Grímsey*

Gistiheimilið Básar
GRÍMSEY

www.gistiheimilidabasar.is | 848 1696



FROM AKUREYRI

GUIDED TOURS

2018

ICELANDIC BUS COMPANY
SBA-NORÐURLEIÐ
www.sba.is



LAKE MÝVATN EXCURSION

This 9 hour tour to one of the loveliest spots in Iceland focuses on the most attractive features of the area. Visit Godafoss waterfall, the geothermal fields in Hverarond, explosion crater of Viti and the Myvatn Nature baths.

Price 17.100 ISK

DETTIFOSS GRAND TOUR

Day tour to Dettifoss Waterfall, the most powerful waterfall in Europe, sightseeing around Lake Myvatn and the Jokulsargljufur canyons formed in a devastating glacial flood.

Price 22.500 ISK.

By using the green energy electric boats for whale watching North Sailing adds a new dimension to the way their guests experience nature.



Whale Watching Húsavík:

The silent and eco-friendly way!

North Sailing is an eco-friendly and sustainable whale watching company that is highly respectful of nature and wildlife. Their Original Whale Watching tour has built a reputation for the town of Húsavík as the Whale Capital of Iceland.

Whales and puffins

Discover the magnificent nature of Skjálfandi bay where you can see whales, dolphins and sea birds in their natural habitat. North Sailing's crew is both professional and highly qualified and will take you along on a smooth sailing in a traditional Icelandic oak boat to explore the home of the whales. In addition to seeing whales in their natural habitat, you get to see the colourful and iconic puffins nesting, flying around and diving for food!

Eco friendly whale watching

Andvari and Opal, North Sailing's innovative electric boats are completely silent, and the most animal and environmentally friendly whale watching vessels in the world. Gliding silently alongside the whales on an electric boat offers a tranquil whale watching experience that is unparalleled: You will have a chance to quietly watch the whales, causing them minimal disturbance. An unforgettable experience!

www.northsailing.is





The Orbis et Globus is a 3m diameter globe that will follow the fluctuating North-South path of the Arctic Circle until it leaves the island.

Grímsey island – ORBIS et GLOBUS

Grímsey island is the only substantial part of Iceland that lies partly within the Arctic Circle. The island is a notable tourist destination for being the northernmost inhabitable place in Iceland, it is only two square miles in size and has a population of less than 100 people. Although inhabitants are few, they heartily welcome visitors throughout the year. There are regular ferry trips between Dalvík and Grímsey five days a week, and there are also regular flights from Akureyri.

The island offers daily guided tours around the island throughout the year, as well as a number of interesting activities such as boat-tours, birdwatching, fishing, diving or simply enjoying a round of golf.

The Arctic Circle is a line close to the 66,5° parallels in the Northern and Southern



hemispheres. It marks the approximate area where the sun never rises in winter and never sets in summer. There is no better place to enjoy the unique midnight sun and during the summer solstice the sun remains above the horizon around the clock and the islanders have a special festival to celebrate.

Although Grímsey has been in the Arctic Circle for 300 years, it's not staying there. Long ago the Arctic Circle crossed northern Iceland but it has since been moving northward at an average pace of 1.5 km a century. By 2047, the circle will have moved north of the island, not to return for 20,000 years.

ORBIS et GLOBUS (Circle & Sphere) is an artwork, a 17,600-pound concrete sphere,



that was placed on the Arctic Circle in 2017. It is a 3m diameter globe that will follow the fluctuating North-South path of the Arctic Circle until it leaves the island.

Calculations show that it first made landfall in Grímsey in 1717 and has been consistently over the island since 1750. In addition to the orb, there are also three smaller stones marking the previous Arctic Circle boundaries on the island. Each stone is inscribed with a date: 1717, 1817 and 1917, marking the movement each century.

www.grimsey.is

When in danger

Call **112**



#1 OF THINGS TO DO IN HÚSAVÍK 2017

“ONE OF THE MOST INCREDIBLE DAYS OF MY LIFE”



HÚSAVÍK
the
WHALE CAPITAL
of
ICELAND

Pick your tour!

HÚSAVÍK ORIGINAL WHALE WATCHING



An unforgettable whale watching exploration, recommended by thousands of travellers.

BEST SELLER

SILENT WHALE WATCHING



Glide silently alongside the whales on an electric boat. A tranquil whale watching experience.



CARBON-NEUTRAL

WHALES AND PUFFINS



The perfect combination. A whale watching excursion with a stop by the peaceful Puffin Island.

HOME OF THE PUFFINS

WHALES AND SAILS



Get close to the whales on board a traditional Icelandic sailboat and learn the old ways of sailing.

TRADITIONAL SAILING



NORTH SAILING
SINCE 1995

CALL +354 464 7272 OR
BOOK YOUR ADVENTURE AT
WWW.NORTHSAILING.IS

The East of Iceland

– A unique place on a global scale

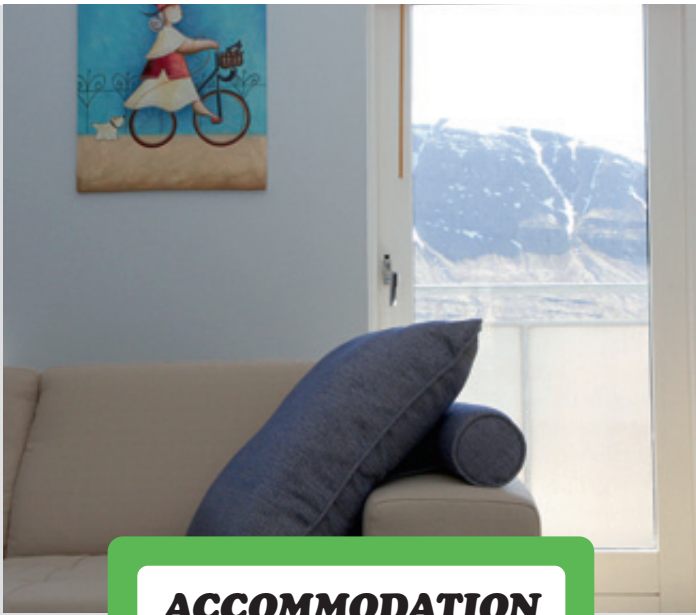


www.east.is

Useful links

Official travel guide for the area	www.east.is
Vatnajökull National Park	www.vatnajokulsthjodgardur.is
Official travel guide to Iceland	www.visiticeland.com
Promote Iceland	www.islandsstofa.is/en





ACCOMMODATION



FOOD AND FUN



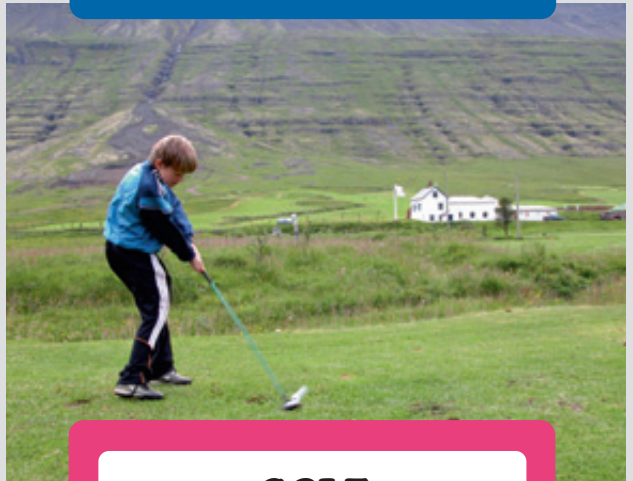
CAMPING



MUSEUMS



SWIMMING POOLS



GOLF

Wonderful Fjarðabyggð

Welcome to the region of the fjords
Experience the riches of
East-Iceland

In Fjarðabyggð you'll find six wonderful fjords, each with a unique charm of its own. Find your favourite fjord or the coolest mountain.



Wonderful Fjarðabyggð
visitfjardabyggd.is



The community's magnificent mountains and picturesque fjords are just part of what Fjarðabyggð has to offer. Equally memorable to those who visit are the communities and the culture of the seaside villages, each with its own spirit and character nestling along Iceland's easternmost coast. Every year, the Fjarðabyggð combination of landscape, history and easy going attitude towards life attracts more visitors.

You can easily find the hotel or guest house best suited to your desires, or choose one of Fjarðabyggð's six camping areas. You'll also find plenty of choices for recreation, in a municipality where both mountain slopes and seashores lie just beyond your doorstep.

No matter where else you're heading in East Iceland, Fjarðabyggð will be worth every minute you spend here. Check out our wide range of services and recreation for travellers and come enjoy the wonders of East Iceland, at all times of the year!

Events summer 2018

11-14th July

Eistnaflug, heavy metal music festival in Neskaupstaður

26.-29th July

French Days in Fáskrúðsfjörður

3-6th August

Neistaflug, municipal festival in Neskaupstaður

18th August

Útsæðið - town festival in Eskifjörður

Wonderful Fjarðabyggð



Seyðisfjörður is a quirky and charming artistic hub

Rainbow Street is a big hit!



Dagný Erla Ómarsdóttir with her daughters Margrét Móeiður and Sigrún Ísold surrounded by beautiful nature.

“We are very excited for the upcoming season and travellers have already started arriving here in Seyðisfjörður,” says Dagný Erla Ómarsdóttir, travel- culture and sports representative at Seyðisfjörður town in East Iceland. Over 300.000 tourists visited the town last year alone, which is an increase from the previous year. “This is the second year we have kept the Information Centre open throughout the year, in response to the increasing number of tourists outside the traditional tourist season. This is rather new to us, welcoming travellers throughout the year, and a very positive trend.”

Blossoming arts scene

Seyðisfjörður is known for its quirky charm, offering an abundance of diverse activities: “The arts scene here is flourishing, with regular exhibitions in Skaffell Centre for Visual Art, the Tvisöngur Sound Sculpture right above the town, regular cultural events like the LungA youth arts festival, the Smíðuhátíð blacksmith festival, the Blue Church’s concert series, and the annual Gay Pride Festival, Hýr halarófa, just to mention a few.”

The calm, deep fjord of Seyðisfjörður stretches 17 km inland and is known for its stunning nature: “We have a great number of interesting hiking trails, for both novices and



Cruise ship in the Seyðisfjörður harbour.

those who are more used to the great outdoors. We also offer a number of guided walking tours and hikes, ranging from 1-8 hours. Experienced hikers can also try for the local challenge of conquering all of the fjord’s seven peaks! There are also kayak and bicycle rentals and boat tours in Seyðisfjörður, as well as the local swimming pool and an excellent 9 hole golf course.”

What should tourists not miss?

“Don’t forget to snap a picture along the Rainbow Street with the Blue church in the background, before grabbing a bite of sushi at NorðAustur and finishing off the day by enjoying an El Grillo beer, locally brewed, at Kaffi Lára,” suggests Dagný Erla, adding that the town also offers a variety of different accommodations, from hotels and guest-houses to hostels and a camping area.

visitseydisfjordur.com

Rainbow over Rainbow Street (although actually called Norðurgata).





The mystical scenery found at Stóruð is unlike anywhere else in Iceland.

Stóruð hiking

The Stóruð is one of East Iceland's most illustrious spots, located to the east of the road leading to Borgarfjörður eystri. Stóruð lies below the small glacier west of the Dyrfjöll mountains. It consists of gigantic tuff boulders, charming meadows and attractive ponds. To enjoy Dyrfjöll and Stóruð a whole day plan is highly recommended.

Hiking among Stóruð's labyrinth of giant boulders surrounded by vividly colored

aqua-blue ponds and charming mossy meadows is truly magical – even for Iceland. This secret valley lies just beneath a small glacier west of Dyrfjöll Mountains and was most likely created by a glacial landslide at the end of the last Ice Age.

GPS POINTS N65° 30' 51.936" W13° 59' 26.295"



We recommend a visit to Gerpir for all lovers of nature.

Photo: www.fjardabyggd.is

Gerpir – The easternmost cape in Iceland

Gerpir is the easternmost cape in Iceland, running steep into the sea from a height of 661 metres. Estimated to be around twelve million years old, the rock is considered to be among the oldest formations in Iceland. The area around Gerpir is a hiker's dream: You

can find a hiking map of the area in information centres and stores around Fjardabyggð. A visit to Gerpir is well worth the effort!

GPS POINTS N65° 4' 6.771" W13° 31' 17.572"



Borgarfjörður eystri is a tiny village in the Eastern Region in Iceland.

Borgarfjörður eystri – Worth visiting

The Borgarfjörður region, on the coast about 70 km from Egilsstaðir in East Iceland, is known for its great natural beauty. The village has around 100 inhabitants.

Borgarfjörður is famous for the good hiking trails named "Viknaslóðir" leading to the deserted fjords and coves, Víkur, and to Loðmundarfjörður. The area has become a hiker's paradise with local people marking numerous trails, comfortable hiking huts and a good hiking-map. Borgarfjörður also has excellent facilities for bird-watching.

Johannes Kjarval, one of Iceland's greatest painters, grew up in the area and the town has a great exhibition of his work. For further artwork by Kjarval, we recommend Kjarvalsstaðir museum in Reykjavík. The altarpiece of Bakkagerdi church was also made by Kjarval. Since 2005 the annual Braedslan music festival has been celebrated at Borgarfjörður Eystri in June, in an old herring factory.

GPS POINTS N65° 31' 36.435" W13° 48' 57.783"

When in danger

Call **112**



Neskaupstaður: A horn of plenty



Neskaupstaður is the hub of the most active kayak club in Iceland.



Last year a 7.9 km (4.9 mi) long tunnel, named Norðfjarðargöng, were opened between Neskaupstaður and Eskifjörður.

Neskaupstaður is the largest town of the municipality of Fjarðabyggð, a fishing town of around 1500 people in East Iceland. Neskaupstaður has a strong fishing industry, is close to attractive nature and features an interesting museum, The Safnahúsið – site of a natural history museum, painter Tryggvi Ólafsson art collection and a maritime museum

Neskaupstaður offers a horn of plenty. It is known for the music scene where the blues, rock and jazz club Brján serves as a central

hub and the town is also home to Iceland's only hard-rock and metal music festival, Eistnaflug in August. Hiking trails in Norðfjörður nature reserve are renowned for imposing natural beauty, diverse birdlife and fauna. A good horse rental, Skorrahestar, offers long and short tours and Neskaupstaður is the hub of the most active kayak club in Iceland. Hotels, outdoor swimming pool, beautiful natural sights like the cave Páskahellir and the Rauðubjörg cliffs. Catching the scheduled boat to nearby Mjóifjörður

ensures great views along the way.

Until 50 years ago the town was only accessible by sea, a fact which had a stimulating effect on the lively local culture. Last year a 7.9 km (4.9 mi) long tunnel, named Norðfjarðargöng, were opened between Neskaupstaður and Eskifjörður, replacing a difficult mountain road around Oddskarð.

GPS POINTS N65° 9' 6.066" W13° 41' 21.647"

Skriðuklaustur – Centre of culture and history

Skriðuklaustur is in Fljótsdalur valley at the upper end of Lagarfljót lake – right by the highland road to Snæfell and Kárahnjúkar.

Skriðuklaustur is now a centre of culture and history in Fljótsdalur. After becoming a renowned author on the European continent, Gunnar Gunnarsson had a mansion built here in 1939, and made it his residence. In 1948 he bequeathed the property to the Icelandic nation. The building is now home to the Institute of Gunnar Gunnarsson, displaying books and artifacts connected with his life and work. In addition, there are various cultural events and art exhibitions. Café Klausturkaffi is located in the dining room.

A Visitors' centre for Vatnajökull National Park is also at Skriðuklaustur.

GPS POINTS N65° 2' 29.182" W14° 57' 8.205"



Skriðuklaustur was the home of author Gunnar Gunnarsson and in 1939 was built and designed by German architect Fritz Höger.

Photo: www.east.is



Small groups, relaxed atmosphere and good guides: Skorrahestar hiking and riding tours offer everything from one hour to weeklong tours.

Hiking and horseback riding in East Iceland

If you want to go horseback riding or hiking in East Iceland and have a nice sleepover with homemade food, Skorrahestar in Fjarðabyggd is your stop! Located in Norðfjörður, close to the village of Neskaupstaður, Skorrahestar's motto is 'come as a guest – leave as a friend'.

Walking trips with pack horses are widely popular in other countries and Skorrahestar

now offer such trips, as well as long and short riding tours.

Skorrahestar has accommodation for up to 23 guests in bedrooms for two, three or four guests and can also accept groups.

'You get to experience our homemade international cuisine with a touch of Icelandic tradition as you become a member of the Skorrahestar family,' says Doddi Júlíusson,

who runs Skorrahestar with his wife Thea Alfreðsdóttir. 'Just contact us on Facebook or the web and we will see what we can do for you,' says Doddi, eager to please his guests, as numerous positive reviews on www.tripadvisor.com and www.booking.com can confirm.

www.skorrahestar.is



Skorrahestar's motto is 'you'll arrive as a guest and leave as a friend,' which describes perfectly the spirit that characterises riding and hiking in the Icelandic wilderness.

When in danger

Call **112**

112

VISITSEYÐISFJÖRÐUR

Charming, fun, funky, lively, lovely, different, friendly, creative, historic,
peaceful, artistic, beautiful, open minded, active, bohemian, special

You can find further information on Seyðisfjörður on www.visitseydisfjordur.com

Búlandstindur – A beautifully shaped mountain



Búlandstindur is a mountain in Eastern Iceland between the bays Berufjörður and Hamarsfjörður.

Búlandstindur is a very picturesque, symmetrical and pyramid-shaped mountain in Eastern Iceland. Mt. Búlandstindur is 1,069 metres (3,507 ft) above sea level. Once

you're in the fjord of Berufjörður, or in the tiny village of Djúpvogur, you can easily recognize the towering sentinel of Búlandstindur, standing guard over the fjord.

If you are interested in local folklore and historical mystery, Búlandstindur is home to that as well. Búlandstindur is thought to be an energy center in the country, and many travel to Búlandstindur for its centering and calming effects. Legends also claim that it can make wishes come true in the summer solstice time. Check out the village of Djúpvogur while you're there, ask around for a friendly and experienced climber, and plan an adventure of your own making.

GPS POINTS N64° 39' 37.558" W14° 16' 53.171"



Randulff's Sea House is open during the summer from 12-21 everyday of the week.

Photo: www.east.is

Randulff's sea house

Randulff's sjóhús (sea house) is a beautifully preserved shore-building towards the eastern end of Eskifjörður. Today this fine old house preserves both many artifacts and a lingering atmosphere from the days when the establishment of a herring fishery led to the first real growth of the fjord towns of East Iceland in the late 19th and early 20th century.

The Restaurant Randulffs-SeaHouse offer local delicacies like shark-meet, dried fish, both produced in Eskifjörður and widely

acknowledged as being among the very best in Iceland, pickled herring, as well as reindeer and fresh fish from the fjord.

Built by Norwegian Peter Randulff in 1890, the sea house provided a station for landing and processing herring caught within the fjord through to 1930 when there were no longer sufficient herring coming into the fjord to sustain the industry.

GPS POINTS N65° 3' 51.659" W13° 59' 56.073"



Bustarfell is one of the few remaining turf farms in East Iceland. It is located in Hofsaárdalur in Vopnafjörður.

Vopnafjörður village

The village of Vopnafjörður lies on a spit called Kolbeinstangi, forming Nípsfjörður to the north and Vopnafjörður to the south. On the south side of the fjord is a mountain range which culminates at Mt. Krossavikurfjöll towering 1,079 m. above sea level.

Kaupvangur in the heart of the town Vopnafjörður is a museum in remembrance of the thousands of emigrants who left the region for Canada and the U.S. in the wake of the disastrous Askja volcanic eruption in 1875. There are numerous interesting sights in Vopnafjörður, e.g. Selárdalslaug, a geothermal swimming pool on the banks on the river Selá. Special mention should be made of the historic farm Bustarfell, a regional museum where history comes alive through storytelling and workshops each summer.

GPS POINTS N65° 45' 32.373" W14° 49' 58.521"



What to do in East Iceland?

East Iceland is a horn of plenty for outdoor activities, from lovely strolls in the arctic birch forest to the extreme ordeals of alpine climbers! Hiking, skiing, snowboarding, super-jeeping, hunting, fishing and everything in between and beyond can be provided in East Iceland via professional guides or travel services.

Boats and Sailing

There are many opportunities for water sports in East Iceland. You can find many specialized firms which will lead you to a great adventure on water. Boats in all formats and sizes can be found, to be sailed on salty sea or pure water.

Hikes and treks for everyone

Hiking is by far the East Iceland traveller's best way to enjoy the refreshing wilderness. Good hiking maps of the whole region are available at Tourist Information Centres and a number of paths have been marked for safer hiking and optimum enjoyment.

Swimming pools

There are swimming pools in almost every town and village in Iceland. The pools are generally out-door, heated by warm geothermal water (28-29°C) and include nice hot tubs and sauna's.

History and Museums

East Iceland is rich in history and offers a variety of informative historical places and museums. The East is also rich of folk tales and the supernatural lives within them. The monstrous wrym in the lake Lagarfljót and the tales of elves and trolls give this enchanting country a certain spellbinding charm.

Jeep and Skidoo

Discover the most spectacular sites of East Iceland in an adventurous and unique way!



Skiing

East Iceland offers great outdoor possibilities and skiing is definitely one of them. Whether cross country skiing in the highlands or fjords, or sliding on skis or a skiboard in the great resorts in the area; you will enjoy a stunning scenery and unique character, and it is definitely worth the while.

Hunting and Angling

Going angling is a relaxing and yet exciting way of enjoying the thrills of East Iceland. Other options are for example to hunt reindeers, geese, ptarmigans and the arctic fox – an adventurous and unique experience.

Golf

Come and play golf in the beautiful surroundings in East Iceland. Playing golf in the midnight sun in the breathtaking and peaceful nature is something you cannot miss.

Horseback Riding

One of the favorite hobbies of the Icelanders is horseback riding. No wonder – all those



who have tried riding an Icelandic horse know it is no ordinary horse but a smooth experience to discover the nature of Iceland.

Biking

East Iceland is a wonderful region to go biking in. You can enjoy small tours that are for the whole family or you can go extreme biking over the old postroads over the mountains between the fjords.

Source: www.east.is

When in danger

Call **112**

112



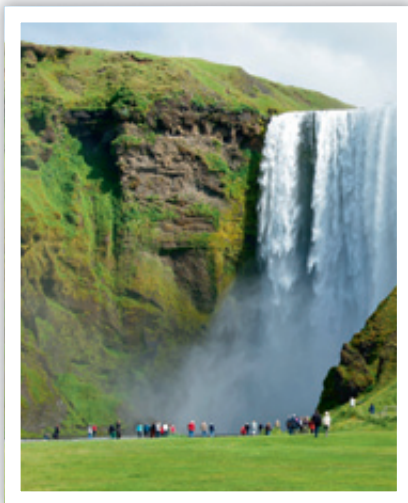
The South of Iceland

– A nature traveller’s daydream



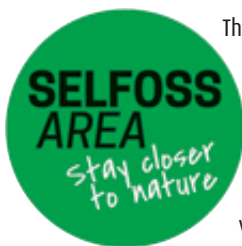
Useful links

Official travel guide for the area	www.south.is
Tourist information	www.southiceland.is
Þingvellir national park	www.thingvellir.is
Þórsmörk area	www.thorsmork.is
Geysir	www.geysircenter.is
Landmannalaugar highland	www.landmannalaugar.info
Official travel guide to Iceland	www.visiticeland.com
Promote Iceland	www.islandsstofa.is/en



Selfoss area

– Stay closer to nature



The towns of Selfoss, Eyrarbakki and Stokkseyri are going to be busy places this summer with a variety of events scheduled. It's a

perfect opportunity to take in the southern part of Iceland and its areas of natural beauty, as well as to experience the number of local festivals taking place. There is ample room for visitors, with many camping sites, hotels and guest houses.

Plenty to see and do

Selfoss is the largest service hub in the region with shops, restaurants and a choice of entertainments. Among the most popular attractions is the swimming pool with plenty of play areas for children, relaxation opportunities in the hot tubs and in the saunas and steam baths. There are also the golf course, the Fischer Centre and the many walking, cycling and riding routes.

A small but special swimmign pool is at the heart of Stokkseyri and the Við Fjöruborðið restaurant is also centrally placed. The shoreline is always worth a visit and this is well known for its natural beauty, plus there is the world-class hunting museum and a good walk to the Knarrarós lighthouse or the Baugsstaðir Creamery is always worthwhile.

Eyrarbakki's historic House is at the centre of the community and this is home to the district's museum, close by the local seafaring



A suspension bridge over Ölfusá River was built in 1945. The bridge is 84 meters long and is in the town Selfoss.



The church at Eyrarbakki.



Built in 1938-1939, the Knarrarósviti lighthouse was the first one in Iceland to be built out of reinforced concrete.

Selfoss Area Information Center

Austurvegur 2 (in the library)
800 Selfoss

Tel: +354 480 1990
www.selfossarea.is

museum. The Saga Music Hall and the Rauða húsið restaruant are also at the heart of this town and an information centre has recently been opened at the Staður community centre, next to the sea defences and right next to Rauða húsið. Eyrarbakki has plenty of available accommodation for those who are looking for the district's evening tranquillity.

www.selfossarea.is



Stokkseyri's coastline.

When in danger

Call **112**



Þakgil campsite: One of Iceland's best kept secrets



In Þakgil there is a dining room in a naturally formed cave with a grill and a fireplace.

Þakgil campsite is located in a beautiful valley, surrounded by mountains, 20 km from Vík by road 214. These conditions make the

weather in Þakgil very mild and calm, and a lovely little freshwater stream trickles through the camping site. Hiking routes to interesting

places of variable difficulty are all around, including to the Mýrdalsjökull Glacier.

Getting to Þakgil is also part of the adventure itself. You will see all manner of weird and wonderful rock formations, scenic panoramic views that go on forever and even the remains of no less than two movie sets, parts of the television show *Game of Thrones* were filmed here. The gravel road is well maintained and an average passenger car can make it all the way to the campsite in about 30 minutes.

GPS POINTS N63° 31' 49.051" W18° 53' 17.848"



At the Árnessýsla Heritage Museum's varied exhibitions in The House, visitors can experience past times and learn about the remarkable history of the building.

Photo: www.south.is

Húsið folkmuseum at Eyrarbakki

Eyrarbakki, pop 526, is a friendly village that, in earlier times, used to be the largest commercial community and the main harbor

on the South Coast of Iceland. A large number of preserved houses from the period 1890-1920 are situated in Eyrarbakki and therefore a visit is like reverting a 100 years back in time.

Húsið (The House) at Eyrarbakki is one of Iceland's oldest buildings, built in 1765 when Danish merchants were allowed to overwinter in Iceland for the first time. Merchant families lived in the House for almost two centuries and over that period the House was the center for art and European culture in Iceland.

GPS POINTS N63° 51' 46.034" W21° 8' 55.016"



The Arnarker cave often provides the opportunity to see ice crystals forming as much as three metres high.

Photo: south.is

The Arnarker cave at Leitarhraun

Arnarker is a cave in the Leitarhraun lava field, north of the old road leading from Þrengsli towards Selvogur. A marked path leads from the information sign by the road to the cave, and a ladder has been placed at its opening, down some 16 meters. It goes from the opening 100 meters south and 400 meters north.

Steps run down into the sixteen metre deep cave in the lava. The cave extends 516 metres beneath the surface, a hundred metres southwards from the entrance and four hundred metres in the opposite direction to the north where there is plenty of headroom and space between the walls. In places there have been rock falls from the roof, and caution is always required in the cave.

GPS POINTS N63° 53' 34.757" W21° 29' 42.237"

When in danger

Call **112**

112

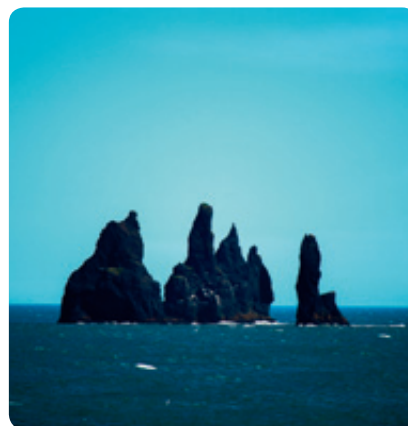
South of Iceland:

All that you desire is here!

South Iceland is a beautiful setting and the perfect base for touring Iceland's most popular natural wonders:

Interesting Historical & Nature sites

- Volcanos
- Waterfalls
- Glaciers
- Caves
- National Parks
- Geysirs and geothermal areas
- Lighthouses
- Mountains
- Historic farmsteads
- Valleys
- Lava fields
- Cultural activities
- Scuba diving, kajaking, whale watching
- Horse riding tours
- Fishing in lakes and rivers
- And much more



Hvolsvöllur sports town



The Hvolsvöllur swimming pool is exceptional.

Hvolsvöllur's swimming pool has exceptional facilities, located in a sheltered spot, and offers everything that the visitor could expect, including hot tubs, shallow pools, water slides, saunas, cold plunge pools and much else besides. The pool is a part of a first-class sports centre, alongside football and track

sports areas. There is also a gym with excellent facilities.

The health trail in Hvolsvöllur is unique 4.2 kilometre pass through and around the town. The track features fifteen points equipped with a variety of exercise equipment, providing opportunities for every kind of



The health trail is always open and suits everyone.

exercise from stretching to practicing on balancing bars. This is free exercise, open round the clock, every day of the year!

www.hvolsvollur.is



The village Klaustur and the surrounding area Skaftárhreppur municipality has a long and interesting history.

Kirkjubæjarklaustur: A popular place for tourists to stop

Kirkjubæjarklaustur is a village with only about 120 inhabitants in South Iceland by the ring road, the first village you encounter after driving through the vast glacial outwash of Mýrdalssandur. Kirkjubæjarklaustur is the only place between Vík and Höfn which offers

services, including a fuel station, a bank, a post office and a supermarket.

Kirkjubæjarklaustur is a perfect location to stay while taking daytours to see many of Iceland's best known natural treasures; Skaftafell, Jökulsárlón glacier lagoon, Langisjór

lake, Eldgjá fissure, Laki craters, Fjaðrárglúfur canyon and Reynisfjara black beach to name but a few. This is an area where saga meets lava and is easily accessible all year round.

Smart guided tours around Kirkjubæjarklaustur and the area surrounding it can be accessed as a smartphone app via the Locatify Smartguide from the App Store or Google play. If you have GPS location enabled, you can find your way around a variety of sites as your smartphone displays information on what is around you. There is the option of a description of a 20 kilometre walking route along Klausturstígur as the geology, topography and history of Kirkjubæjarklaustur and the region are described. Shorter routes can also be chosen.

GPS POINTS N63° 47' 39.632" W18° 2' 24.433"



STOKKSEYRI SWIMMING POOL

Sundlaug Stokkseyrar is a small and friendly pool, located only 50 minutes from Reykjavik. It has 17 m outdoor pool, waterslide and 3 hot tubs and you might get coffee served in the hot tub. From the swimming pool you can walk and see the beautiful ocenside in Stokkseyri.



Opening times	
Summer (01.06.15 – 15.08.15):	
Mon. - Fri.	13:00 - 21:00
Sat. - Sun.	10:00 - 17:00
Winter (16.08.15 - 31.05.15):	
Mon. - Fri.	16:30 - 20:30
Sat.	10:00 - 15:00
Sun.	Closed

Address:
v/Hásteinsveg Stokkseyri
825 Árborg
(+354) 480-3260

Address:
sundh@arborg.is
www.arborg.is



GPS: 63° 50.266'N, 21° 3.815'W

When in danger

Call **112**

112

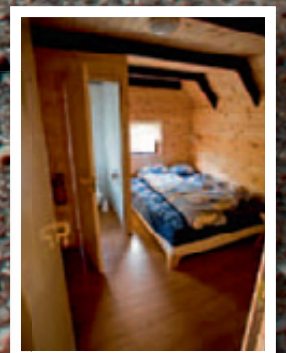
Kerlingarfjöll

A Highland paradise

A favourite destination for many Icelanders for over 50 years



Have you heard about our new three-day hiking tour?



Reservations for accommodation and detailed information can be found online

Tel. 664 7878

www.kerlingarfjoll.is



Svartifoss in Skaftafell. The largest national park in Europe is in Iceland.

Vatnajökull National Park (Pronounced “vaht-na-yo-kudl“)

Vatnajökull is the largest national park in Europe, covering around 13% of the entire country. Despite a large part of the park being underneath the icecap of the glacier Vatnajökull, its landscape is diverse, predominantly due to the interplay of

volcanic activity and glaciers. The park is intended to protect the landscape, biology, geological formations and cultural heritage in the area – and to enable people to enjoy these.

The park is divided into four areas for

easier management and travelers are welcome at the visitor centers in Skaftafell, Skriðuklaustur and Ásbyrgi.

www.vatnajokulsthjodgardur.is

Hjálparfoss waterfall

Hjálparfoss is a beautiful, two stepped waterfall near the confluence of Þjórsá river and Fossá in Þjórsárdalur. Hjálparfoss is one of several waterfalls in the south of Iceland situated in the lava fields north of the stratovolcano Hekla.

Hjálparfoss is located about 30 kilometres (19 mi) east of the village Flúðir and can be reached by a gravel road off Route 32 that winds through the Vikrar lava fields. About 5 kilometres (3.1 mi) south of Hjálparfoss lies Þjófafoss waterfall; further east are Háifoss waterfall on the Fossá river, and Tangafoss waterfall on the Þjórsá river. Just downstream from Hjálparfoss is Iceland’s second-largest hydroelectric power station, Búrfellsstöð, well worth the visit.



The Hjálparfoss waterfall is a joy to photograph in any season.

GPS POINTS N64° 6' 57.306" W19° 50' 58.101"

Reynisfjara: A must-see in Iceland

Reynisfjara is one of Iceland's most popular tourist attractions because of its unusual expanse of black sand. The waves can be very unpredictable and the

undertow at Reynisfjara is extremely strong, so don't get too close to the water! From the beach you have a view to the Reynisdrangar sea stacks.

The Reynisfjall mountain in the Mýrdal district rises 340 metres and is formed of tuff, the rock generated during an eruption beneath a glacier during the cold period of an ice age. The main road lies along the inner side of the Reynisfjall mountain and there is a road leading up the mountain dating back to the Second World War when the US military established a Loran navigation mast there.

GPS POINTS N63° 24' 15.386" W19° 2' 38.878"



It should be remembered that caution is needed on the Reynisfjara beach when enjoying the wonderful landscape and the bird life.

When in danger

Call **112**

112

Welcome to Eldheimar

– the Westmann Islands' new eruption museum



www.eldheimar.is - eldheimar@vestmannaeyjar.is - Tel. +354 488 2000

Eldheimar volcano museum: An incredible journey!



The volcano museum in the Westmann Islands has been highly rated by visitors.



Kristín Jóhannsdóttir, the museum's director.

Eldheimar in the Westmann Islands is devoted to the 1973 volcanic eruption and the process of rebuilding afterwards. The centrepiece of the exhibition is a home at Gerðisbraut 10 that was buried beneath the ashfall more than forty years ago. It provides a moving display of how this natural disaster affected people's homes, and Eldheimar shows just how significant a threat the eruption was to the future habitation of the Westmann Islands.

Other significant volcanic activity is also part of the Eldheimar exhibition, including the Surtsey eruption that started in 1963 and lasted almost four years. Following the eruption, Surtsey was declared a protected nature reserve, which gave the scientific community its first opportunity to observe how new life and a new ecosystem appear. Surtsey is on the UNESCO World Heritage List.

www.eldheimar.is

Opening hours

Summer

From 6th May to 4th Oct
Every day: 11:00 to 18:00

Winter

From 5th Oct to 5th May
Wednesday to Sunday: 13:00-17:00

Open for groups outside normal hours
by prior agreement



Gerðisbraut 6 was an ordinary house that was buried under the ash of the Westmann Islands eruption and is now the centrepiece of the Eldheimar exhibition devoted to the 1973 eruption and the 1963 Surtsey eruption.

A real Country Dream in South Iceland



Relaxed atmosphere and good accommodation is Country Dream's trademark.



Country Dream is a family owned guesthouse in South Iceland offering accommodation for up to 16 guest in brand new studio apartments for 2-4 guests, as well as in 3 cosy bedrooms, each for two guests, in the service house.

Located at the farm Langholt 2, just east of the town Selfoss, Country Dream is very

well placed for day trip visits to the Golden Circle, Þingvellir, Seljalandsfoss, Þórsörk and other nature treasures of South Iceland. In autumn and winter time Country Dream is a nice spot to see the northern lights and close by is the river Hvítá with variable birdlife and good surroundings for short hiking tours.

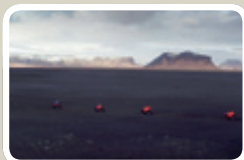
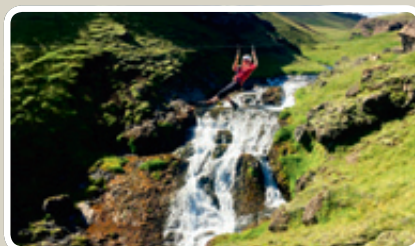
Guest can also take short horseback riding

tours in Langholt 2, as the owners, Ragnar and Fridur, have years of experience in horse farming. For more information send an e-mail to info@countrydream.is or call +354 482 1061.

[facebook.com/icelandiccountrydream](https://www.facebook.com/icelandiccountrydream)

Summer, autumn, winter or spring

Mýrdalur has much to offer all through the year



80 years of servicing in the Kerlingarfjöll

74
OUTDOORS 2018

The Kerlingarfjöll mountain cluster, which is the main landmark of the Kjölur area, is a cluster of mountains that were formed by volcanic eruptions some 70.000 to 300.000 years ago. At the northeastern corner of the range is a small valley, Ásgarður or Asgard, named after the home of the Gods in the Old Norse Religion. The mountain cluster is some 15 km from the old Kjölur horse track, a former main road between regions during the summertime. However, the mountains were rarely, if ever, visited by people until the end of the nineteenth century, when scientists began to research the area.

First cars arrived at Kerlingarfjöll in 1936, at which time the area became a destination for tourists enjoying the spectacular beauty of the area, both the colourful landscape as well as the aerial view: From some of its summits one can see the ocean to the south and to the north of Iceland from the same spot. There are few, if any, places in Iceland who can offer such a diverse view. Today the area is one of the most important tourist destination in the highlands, estimated to receive some 25.000 visitors this year, some of them only visiting for few hours, others staying one or more nights at the Kerlingarfjöll mountain resort, located in the Ásgarður valley.



Fannborg views the preservation of the area as one of its key objectives, and has laid tracks for hikers and built bridges across geothermal areas.

Spectacular geological formations abound
in the Kerlingarfjöll mountain range

g intrepid travellers l mountain range

For many years Fannborg, which owns and operates the resort, has viewed the preservation of the area as one of its key objectives, not only the sustainability of the resort itself, but also sustainability of the tourism in the area. For close to two decades, Fannborg has been working on several projects that have enhanced the sustainability, and to mention a few:

- Building stairs tracks in the Hveradalir area, facilitating access as well as making the tracks more safe.
- Participating in financing and building of bridges, both in Hveradalir and in the Ásgarður valley.
- Marking hiking routes in the area.
- Cleaning debris along the Kjölur road as well as tracks in the highland plateau around Kerlingarfjöll

As can be seen from above, Fannborg has emphasized respect for and resilience towards nature, and as a means of doing so, the company has arranged for the picking up of trash along the roads and tracks in the area, and cleaning old fences that divided the area to prevent outbreak of animal diseases.

As to its operations, Fannborg decided to develop its properties in the valley from the current stage of many smaller huts to one integrated building, with more efficient heating system and thus a more environmentally friendly operation.

Fannborg hopes that the guests in the area respect nature and what has been done to protect and maintain it, for example by following tracks, both while driving and hiking, and making sure that no rubbish is left behind.

Þingvellir National Park (Pronounced “thing-veht-lir“)



From Þingvellir.

Photo: www.south.is

The oldest of Iceland's three national parks, Þingvellir is on the World Heritage List. Þingvellir was the site of Iceland's general assembly, established around 930, and most major events in the country's history have taken place there. The area is also a natural wonder, with the

geological history and the ecosystem of the lake Þingvallavatn, forming a unique entity.

www.thingvellir.is

Íþróttamiðstöðin Hvolsvelli

Opening hours, wintertime (1. okt - 30. apr)
 mon - fri 06:00 - 21:00 (6 am - 9 pm)
 sat - sun 10:00 - 15:00 (10 am - 3 pm)

Summertime (1. mai - 30. sept)
 mon - fri 06:00 - 21:00 (6 am - 9 pm)
 sat - sun 10:00 - 19:00 (10 am - 7 pm)

Íþróttamiðstöðin Hvolsvelli
 Vallarbraut 16
 860 Hvolsvöllur
 tel: 488-4295

Vík í Mýrdal: Two large-scale events coming up in 2018

Skafftellingur: 100-year anniversary

May 18th. – Location: across the street from the tourist information centre in Vík í Mýrdal



Celebrate the 100-year anniversary of the trading vessel Skafftellingur in the museum dedicated to it, across the street from the tourist information centre in Vík (Vikurbraut 28). The event will be held on May 18th, 2018 from 17:00 to 20:00 (5 PM to 8 PM). You will be able to attend concerts, speeches as well as an art exhibition. Local food and refreshments will be served. A great opportunity to experience the local history and culture, along with a sample of the local community and cuisine.

Skafftellingur is a 60-ton oak ship, currently on display in Vík. It was built in 1918 in Denmark and then brought to Iceland. In the olden days, transportation was extremely difficult in the two counties of East and West Skaftafellssýsla, on the south coast of Iceland. People needed a ship in order to transport goods from Reykjavik to Vík, which is why Skafftellingur was commissioned from Denmark. The exhibition is a good reminder of how lucky we are to have a proper road system nowadays! The ship is most famous for rescuing the crew of a bombed German submarine in 1942, an act of humanity in times of war.

Katla Volcano Conference and Regnboginn Culture and art festival

October 12th-14th

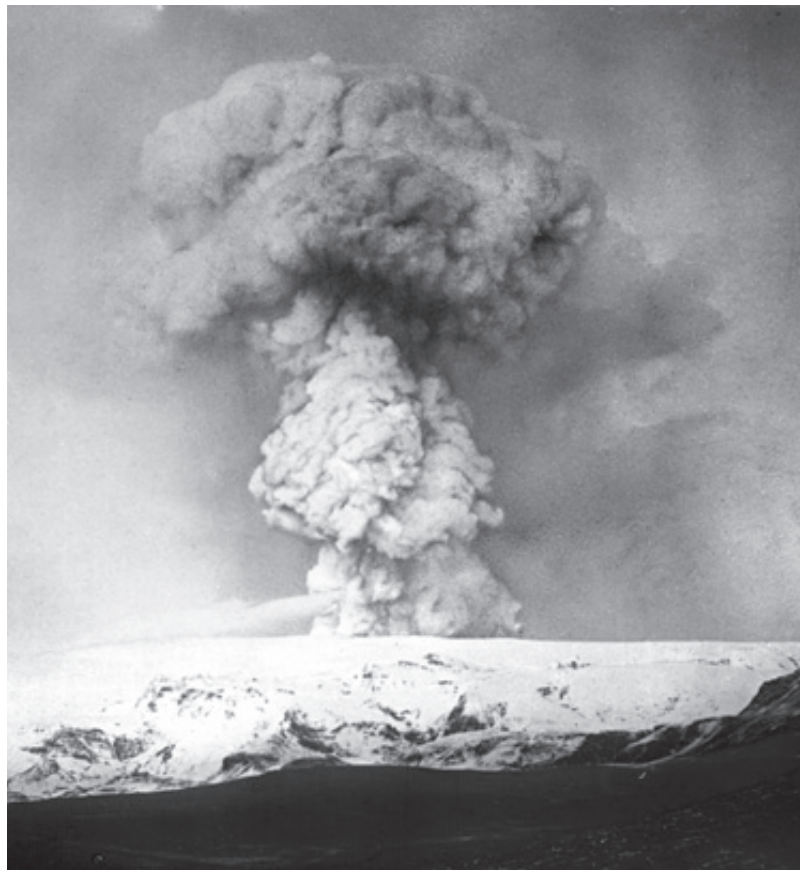
100 years after the last eruption of volcano Katla, we will look back at how it has affected the surrounding nature and the community. The Katla Volcano conference will also raise questions as to how an eruption could affect the local community today and in the future.

The event will include speeches from scholars and scientists, a field trip, an exhibition, as well as experiments and measurements that students are especially encouraged to participate in.

The annual town festival will be held on the same weekend. Regnbogahátíð (the Rainbow Festival) is a cultural and artistic event with all kinds of happenings, concerts, open houses, activities, a market and so much more. Follow @Regnbogahatid on Facebook!

The conference is organised by the Katla centre in Vík, Katla UNESCO Global Geopark, Mýrdalshreppur and the University of Iceland. There are many co-partners, including the Icelandic Met office.

For more information contact Katla Centre at www.kotlusetur.is



The Reykjanes Peninsula

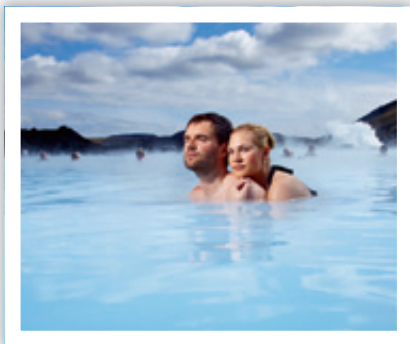
– Crossing continents



www.visitreykjanes.is

Useful links

Tourist site for the area	www.visitreykjanes.is
Grindavik tourist site	www.visitgrindavik.is
Viking World	www.vikingworld.is
Blue Lagoon	www.bluelagoon.com
Official travel guide to Iceland	www.visiticeland.com
Promote Iceland	www.islandsstofa.is/en



Welcome



Pre-booking is required, book online at [bluelagoon.com](https://www.bluelagoon.com)

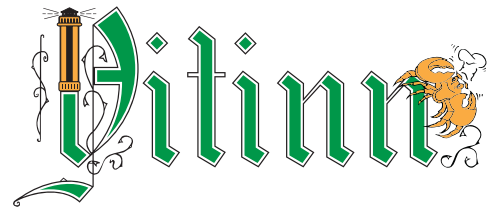
BLUE LAGOON
ICELAND



www.vitinn.is

The menu at Vitinn carries fresh seafood as well as lamb and chicken dishes.

Vitinn in Sandgerði:



Seafood restaurant by the harbour



Welcome to Vitinn

Vitinn means 'the lighthouse' so this might be the first word you learn in Icelandic and one that you will never forget, just as you will never forget your visit to the Vitinn restaurant.

You are always welcome!

The Vitinn restaurant by the Sandgerði quayside specialises in seafood, although its varied menu also includes lamb and chicken dishes.

Vitinn's menu offers whole langoustine and whole plaice, but its 'fruits de mer' platter is the restaurant's centrepiece, composed of five different crustaceans; langoustine, mussels, rock crab, clams and shrimp. The restaurant also offers crab soup made with rock, found for the first time in Iceland in 2006, arriving from the east coast of North America. This makes Vitinn the only restaurant in Europe able to offer rock crab soup made from crabs gathered in Hvalfjörður.

Airport business

Chef and owner Stefán Sigurðsson said that people passing through the nearby international airport frequently make the restaurant their first or last call in Iceland, and bookings for this summer are looking promising already.

'A lot of people leaving on a midnight flight come to us for a meal before their flight. We also serve people arriving on the early morning flights from the USA. They can't check into their hotels until midday, so they take a look around the region and come to us for a good breakfast before they travel any further,' he said.

Booking in advance for groups at info@vitinn.is or tel: +354-423-7755.

Reykjanes peninsula is unique

The nature on the Reykjanes peninsula is unique and since 2015 it is known as Reykjanes UNESCO Global Geopark. The peninsula exists where the North Atlantic ridge rises from the ocean. Here you can find 100 different craters, caves and lava fields, a variety of bird life, astonishing cliffs, high geothermal activity, and black sand beaches.

The peninsula is easily accessible all year round and distances between places are not

long as many places of interests are only a 5-20 minutes drive from the Keflavik international airport and within an hour's drive from the capital of Iceland, Reykjavik.

The Reykjanes Geopark's Visitors' Centre is located in the Duus museum, Reykjanesbær. The Visitors' Center has an interesting exhibition on the geology of the Reykjanes peninsula and its unique geology.



Gunnhver hot springs is the heart of the Reykjanes Geopark, where the North Atlantic ridge is rising from the ocean.



Keilir is a beautiful, pyramid-shaped mountain clearly visible from Reykjavik.

When in danger

Call **112**

112



MFA Studio - 2017

REYKJANES UNESCO GLOBAL GEOPARK
WE HAVE GOOD STORIES TO TELL

reykjanesgeopark.is — visitreykjanes.is





Hópsnes peninsula. Precarious for seafarers, many ships have stranded by Hópsnes.



Gunnhver hot springs. Iceland's largest mud pool, bubbling with geothermal activity.

Enjoy Grindavík:

A place with something for everybody

The village of Grindavík is one of Iceland's special surprises for tourists. While best known for its world famous Blue Lagoon, Grindavík also offers visitors diverse opportunities for recreation, leisure, and family fun.

Grindavík has guesthouses, a state of the art camping facilities, one of Iceland's top 18 hole golf course, and the unique Kvikan cultural centre with its exhibitions of marine resources and geothermal energy, as well as a variety of places to relax. There is an information centre for tourists and you will also find a surprising amount of good restaurants in Grindavík, for example the Fish House Bar and Grill, Hjá Höllu, and Max, just to name a few.

The area immediately around Grindavík offers countless opportunities for adventure and entertainment. Hike along historic trails such as Prestastastígur, Skógfellsvegur and Reykjavegur, or travel on an ATV, go horseback riding or tour by bicycle.

Visit the Hópsnes circle, with its shipwrecks and relics, and the Reykjanes lighthouse for a glimpse of life near the sea. Tour the fish processing facility in Stakkavík; fish in the harbor. Climb Þorbjarnarfell Mountain and enjoy a spectacular view of Grindavík and the surrounding area. See natural gems such as Gunnhver, Brimketill, Eldvörp, Kleifarvatn and Krísvíkurberg.

The Reykjanes lighthouse is a sight well worth seeing, along with the colourful birdlife and activity around the harbour at Grindavík, which is also one of Iceland's primary fishing ports. And summer in Grindavík is full of activity. Sjóárin síkati; one of the biggest festivals in the nation, and the annual Midsummer's Night Eve hike, Nature's Week in Reykjanes.

Yes: Grindavík is a place with something for everybody!

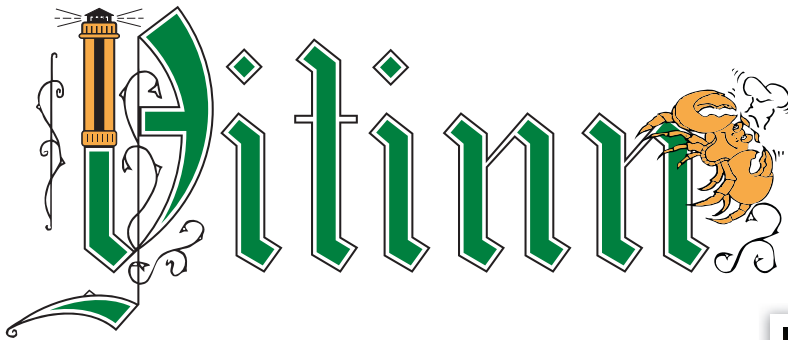
www.visitgrindavik.is



Eldvörp crater. Popular hiking trails in the scenic, thermally active area.



There is much to see in the awe-inspiring nature of Reykjanes.



Vitinn is located in the town of Sandgerði, just 10 minutes from Keflavik International Airport.



**Hunger sated
in 10 minutes**

Vitinn; in the wonderful fishing village Sandgerði

After a long flight you can land with that sinking feeling that you still have the get to your hotel, check in and so on. We are delighted to tell you that only ten minutes from Iceland's airport terminal you could be taking in a wonderful adventure in comfort.

Vitinn in Sandgerði is one of Iceland's best-kept secret. This is the only restaurant anywhere in Europe to cook the delicious Icelandic rock crab. Lunches and dinners here feature the freshest seafood. With the fishing boats delivering their catch only a few metres away from the restaurant itself, you can see why. For those with a preference for meat, the roasted fillet of Icelandic lamb is highly recommended. But we strongly recommend that you to take our renowned crab soup for starters.

However, flights to Iceland often arrive early, so Vitinn opens at seven every morning to offer groups delicious breakfast (booked in advance) that will keep visitors on their feet for hours to come. Again, this is freshly cooked.

Dining at Vitinn is an inspiring introduction to Iceland. The restaurant interior, with its richly coloured wooden walls and beams, is adorned with mementos from both Sandgerði's agricultural and seafaring past. During the summer months, diners can enjoy their meal outside in the garden and watch crabs in our specially equipped aquarium so that they can get the most of their visit. This is kept filled with clean seawater pumped from a borehole outside the restaurant. it is a recent addition that we hope our guests will appreciate and enjoy.

The Cliffs at Krýsuvíkurborg

Krýsuvíkurborg is 50 metres high, and about 57.000 pairs of seabirds nest on these cliffs. The highest point of Hafnaberg is 43 metres, and its estimated population of seabirds is 6.000 pairs. Fourteen kilometres southwest of the peninsula is Eldey island, home to one of



Until 1975, there was no geothermal activity around Grænadyngja and Trölladyngja but a few years later things started to shift and change.

Grænadyngja and Trölladyngja

The mountain Trölladyngja (Troll Mountain) is quite curious, only 275 meters high. Next to Trölladyngja is another mountain, Grænadyngja (Green Mountain) that is a bit higher, 393 m. The two mountains are commonly referred to as „The Sisters.“ Both mountains are geothermally very active, and also very popular amongst hikers.

These little mountains are surrounded by young volcanic fissures, geothermal sites and beautiful colours. They are associated with various lava flows, including Afstapahraun close to the Keflavik International Airport main road.

GPS POINTS N63° 56' 23.016" W22° 5' 10.393"

When in danger

Call **112**

112



At Krýsuvík, dramatic red, green, and yellow coloured hills frame an expanse of steaming volcanic vents and boiling hot springs.

Photos: www.visitreykjanis.is

the largest gannet colonies in the world. The gannet is the largest seabird in the north Atlantic ocean, and about 16.000 pairs nest each year on the island, which is only 0.3 km² in area, and up to 77 metres high.

The arctic tern is among the most common birds in the Reykjanes peninsula, mostly found in colonies on the tip of Reykjanes, east of Grindavík and between Garður and



On the Krýsuvíkurborg and Hafnaberg cliffs, thousands of seabirds nest each summer.

Sandgerði. Whimbrels, which breed in the Suðurnes area, spend the winter in Africa, and arctic terns migrate to the Antarctic. The golden plover, oystercatcher and snipe are migratory birds which are common in the area, while the purple sandpiper is one of the few Icelandic waders which does not migrate.

GPS POINTS N63° 50' 10.415" W22° 5' 54.027"



The Saltfish museum is located only a few minutes away from the Blue Lagoon, in the beautiful village Grindavík.

The Saltfish Museum in Grindavík

Saltfish is undeniably responsible for the prosperity of the Icelandic nation, particularly during the late 19th and early 20th century when the industry was at its peak. The Icelandic Saltfish Museum, located near the Grindavík harbour, vividly recreates the atmosphere of an Icelandic fishing village from the 1930's in a natural setting.

The museum is located only a few minutes drive away from the Blue Lagoon. Visitors are guided through the museum with a CD player and can choose between Icelandic, English, German and French.

GPS POINTS N63° 50' 22.673" W22° 25' 56.559"

Driving in Iceland's mountain roads

Always drive carefully on Iceland's roads! Great care must be taken with rivers and fords should always be investigated before crossing.

As beautiful and tempting as the Icelandic highlands are, they can also be dangerous. Far away from any human traffic, and even at times out of cell phone range, it is necessary to take full precautions when travelling in uninhabited areas. You should always prepare your trip and examine conditions beforehand.

All mountain roads and roads in the interior of Iceland have a surface of loose gravel. The surface on the gravel roads is often loose, especially along the sides of the roads, so one should drive carefully and slow down whenever approaching an oncoming car. The mountain roads are also often very narrow, and are not made for speeding. The same goes for many bridges, which are only wide enough for one car at a time.

Check the weather!

Always look at the weather forecast and adjust your travel plans accordingly. Icelandic Met Office website in English: www.en.vedur.is

Leave a travel plan!

ICE-SAR, the Icelandic Association for Search and Rescue, runs the Travellers Reporting Service, where travellers can register and be safe with the knowledge that if they don't report back by a scheduled time, they will be searched for. Just stop by the ICE-SAR office at Skógarhlíð 14 in Reykjavík or visit www.safetravel.is

GPS and phones

Cell phones are important safety tools for those traveling far from populated areas – although they might not always be in range,

they do cover quite a large portion of the country.

If you have a GPS positioning system, you can have free access to a program on the website of the National Land Survey: www.lmi.is

Treacherous glaciers and rivers

Crevasse areas on glaciers are continuously changing and are very dangerous. Do not attempt to travel on glaciers without local knowledge and experience.

Great care must be taken with rivers, and fords should always be investigated before crossing. Glacial rivers can carry huge boulders with them, changing the clear path across the river in seconds, so don't put too much trust in old tracks.

The emergency number in Iceland is 112.

Salmon and trout fishing in Iceland

Most of the salmon rivers in Iceland are gin clear and it can some times be easy to spot the fish. Most of the many lakes in Iceland offer good trout fishing, both brown trout and char. The same can be said for the majority of the smaller and colder rivers.

There are more than 100 self sustaining salmon rivers in Iceland. Self-catering lodges are common but in some few places there are high-quality fishing lodges with good service and guiding. Since the demand is not high, fishing licences can be obtained at short notice and at reasonable cost. Facilities for anglers vary widely.

Some fishing areas are not accessible by car and some trout waters have no facilities. It is important for anglers to know what kind of fishing they are buying and what to expect so they can better plan their trip. Good preparation can ensure that the anglers experience a unique fishing trip. In most places the fishing can also be combined with other outdoor activities.



Iceland is known for some of the best salmon fishing rivers in the world today.

The Capital Area

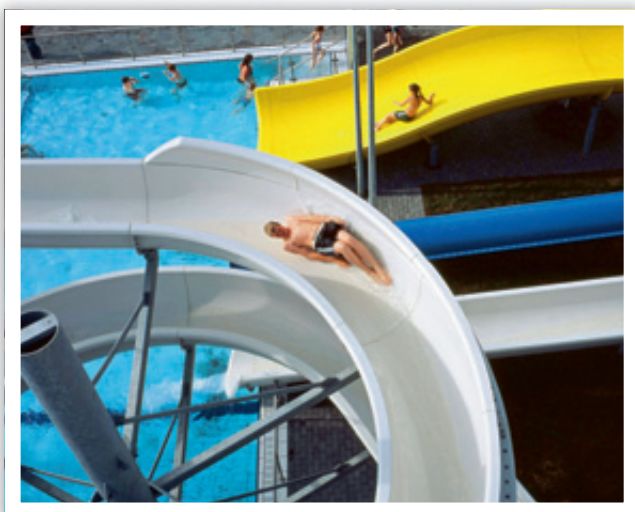
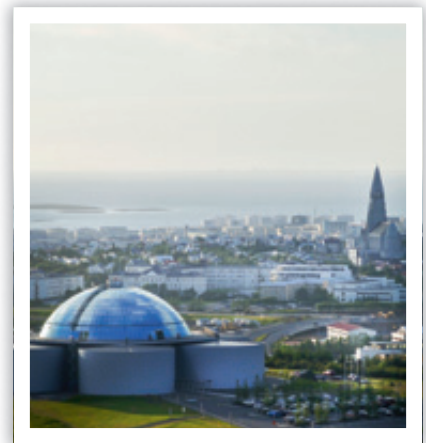
– Pure Energy



www.visitreykjavik.is

Useful links

Public buses	www.bus.is
Harpa Concert Hall	www.harpa.is
National Museum of Iceland	www.natmus.is
National Gallery of Iceland	www.listasafn.is
Kópavogur Art Museum	www.gerdarsafn.is
Reykjavik Art Museum	www.artmuseum.is
Icelandic National Theatre	www.leikhusid.is
Airwaves Festival	www.airwaves.is
Reykjavik Arts Festival	www.listahatid.is





Gljúfrasteinn-Laxness museum is only 20 minutes away from Reykjavik on the way to Thingvellir national park.

Gljúfrasteinn-Laxness museum: The home and workplace of Iceland's Nobel Prize winner

Gljúfrasteinn-Laxness museum in the valley of Mosfellsdalur is only 20 minutes away from Reykjavik on the way to Þingvellir national park. Gljúfrasteinn was the home and workplace of Halldór Laxness, winner of the

Nobel Prize for Literature in 1955 and his family for more than half a century. It is now open to the public as a museum, unchanged from when Laxness lived there.

Halldór Laxness (1902-1998) stands head

and shoulders above the other Icelandic writers of the 20th century and his books have been translated into 43 languages and published in more than 500 editions.

Tours of the house are available in Icelandic, English, German, Swedish and Danish, and an illustrated guide in French. For further information or booking of tours tel: 586 8066 or e-mail: gljufrasteinn@gljufrasteinn.is

www.gljufasteinn.is

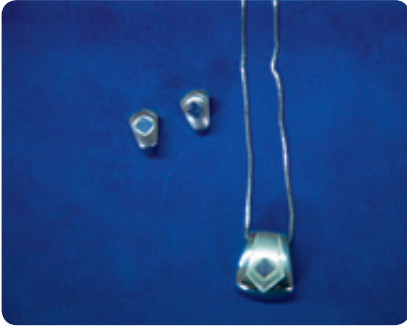


The home of Laxness and his family has now been opened to the public as a museum, unchanged from when Laxness lived there.

When in danger

Call **112**

112



Gullkistan at Frakkastigur 10 in Reykjavík is a goldsmith's shop that offers a wide variety of silverware for the Icelandic national dress. Goldsmith Dóra Guðbjört Jónsdóttir now runs Gullkistan after studying her trade in Sweden and Germany.

'Gullkistan has a variety of national dress silver, much of which is made to old patterns that have been part of the workshops that have been here since 1870. We still use these old patterns, but the original moulds are now kept at the Árbær museum,' she said.

'National dress silverware comes in many different varieties and customers can have their items made to old patterns and we also offer a variety of items worked in silver wire. If people have heirloom jewellery, we can repair, clean and gild it as required,' she added.

www.thjodbuningasilfur.is

Gullkistan: Traditional silverware and jewelry



Goldsmith Dóra Guðbjört Jónsdóttir at Gullkistan on Frakkastigur.

Opening hours

Monday to Friday: 14:00-18:00 – Saturdays: 11:00-14:00

Harpa – Reykjavik Concert and Conference Centre

Harpa – Reykjavik Concert and Conference Centre provides outstanding facilities in the centre of Reykjavik, Iceland. The building is the ideal venue for various concerts and musical events, international conferences, conventions with accompanying trade shows, as well as meetings.

Harpa provides outstanding facilities for all types of music both classical, contemporary, opera, jazz, pop and rock. The halls have outstanding acoustics, well suited for a grand scale of music. The halls vary in size ranging from 200 seats to 1800 and all facilities are equipped to the highest standard. The main hall, Eldborg has great acoustics for various concerts and is the hall where the Iceland Symphony and the Icelandic Opera host their concerts and stage operas.



Harpa provides outstanding facilities for all types of music both classical, contemporary, opera, jazz, pop and rock.

Hallgrímskirkja – A dominating landmark

Rising 74.5 m (244 ft), Hallgrímskirkja is the tallest building in Reykjavík and often used as an observation tower. It is situated in the city center and has become one of Reykjavík's best known symbols. The church is named after the Icelandic poet and priest Hallgrímur Pétursson (1614-74), author of the beloved Passiusálmar psalms. He was one of the most influential pastors during the Age of Orthodoxy and wrote many important Lutheran hymns.

State Architect Guðjón Samúelsson's design of the church was commissioned in 1937. He is said to have designed it to resemble the basalt lava flows of Iceland's landscape. It took 38 years to build the church: Construction began in 1945 and ended in 1986. The church houses a large pipe organ by the German organ builder Johannes Klais of Bonn. It has mechanical action, four manuals and pedal, 102 ranks, 72 stops and 5275 pipes. It is 15 metres tall and weighs 25 tons. Its construction was finished in December 1992.



Hallgrímskirkja is located in the city centre of Reykjavík, a dominating landmark that is impossible to miss.

Our lobster soup is a winner!

Restaurant Saegreifinn (The Sea Baron) is located in the fishing harbour area in Reykjavík, in the heart of the capital city. We specialize in seafood.

According to the locals and foreign visitors we serve the best lobster soup in Reykjavík – even the “World's Greatest Lobster Soup”!

The menu changes, depending on season and produce availability. We also offer unusual specialities like purified shark and “hard fish” (dried fish).

Saegreifinn restaurant was established by an retired fisherman.

The Sea Baron is an attraction in its own right!

www.saegreifinn.is



Saegreifinn



Opening hours 11:30-23:00.
Geirsgata 8, 101 Reykjavík
Tel. 553 1500

The Imagine Peace Tower

The Imagine Peace Tower is a memorial to John Lennon from his widow, Yoko Ono, located on Viðey Island in Kollafjörður Bay near Reykjavík. It consists of a tall tower of light, projected from a white stone monument that has the words "Imagine Peace" carved into it in 24 languages.



The electricity for the Imagine Peace Tower comes entirely from Reykjavik Energy, which produces the electricity from geothermal power.

The light tower is composed of a number of individual lights that join together to form a single beam. Six of the lights travel through corridors across a platform that surrounds the well and are reflected upwards to the sky with mirrors. An additional nine lights shine

straight up to the sky, strengthening the tower of light. The strength, intensity and brilliance of the light tower continually change as particles in the air fluctuate with the changing weather and atmospheric conditions unique to Iceland.

The capital area: 17 swimming pools!

One of the aspects of the Iceland that visitors find so enthralling is Iceland's swimming pools, as few places around the world has pools of the quality that Iceland has to offer. Visitors love the fact that geothermal energy is used to heat both houses and the pools that are such a benefit to health. Visitors to the capital region can choose from no less than seventeen swimming pools, all heated using geothermal energy.



The capital region's swimming pools are enthralling, both for those of us who live here and those who come as visitors.

When in danger

Call **112**



The National Museum of Iceland: Making of a Nation

The National Museum's permanent exhibition tells the story of Iceland, from the settlement to the present day. Multimedia displays, a hands-on room with costumes and games and information folders enable everyone to enjoy the exhibition.

The main exhibition at the National Museum, 'Making of a Nation' has interactive elements many visitors enjoy such as having a one-way telephone conversation with a medieval chieftain from 1117. This section also reveals interesting DNA research used on the teeth of the first Viking settlers to determine their origins.

The ground floor of the museum houses a gift shop and cafe as well as the National Museum Collection of Photographs and Prints which is Iceland's largest public collection of images. Over four million photographs are stored here, both professional and amateur. The museum organizes exhibitions with varying themes relating to its collections and



The National Museum of Iceland welcomes a variety of visitors. The café is a welcome addition to the exhibits.

Icelandic photographic history in general, and publishes books on photography.

The museum is open daily from 10:00-17:00.



Halldór Laxness (1902 - 1998)
Nobel Prize for literature 1955

Gljúfrasteinn

LAXNESS MUSEUM

Laxness

Gljúfrasteinn – Laxness museum is located in Mosfellsbær on the way to Þingvellir national park; only 20 minutes drive from the centre of Reykjavík.

Gljúfrasteinn was the home and workplace of Halldór Laxness, winner of the Nobel Prize for Literature in 1955, and his family for more than half a century.



VISITING THE MUSEUM

Our audio tours of the house take about 25 minutes and are available in five languages: **Icelandic, English, Swedish, Danish and German.**

An extensive multimedia presentation about the life and work of Halldór Laxness is running in the reception area. The presentation is accessible on a touch screen in **Icelandic, English and Swedish.**

A selection of Laxness's books in various languages, containing the official stamp of the museum are on sale in the museum shop at the reception.

The museum garden is open to visitors. Pleasant walks can be made from the garden around the vicinity and down to the small river that runs by the house. It is also possible to picnic in the garden.

ADMISSION AND OPENING HOURS 2015

Adults	ISK 900,-
Children age 6-18	Free
Seniors	ISK 700,-

June 1st – August 31st
Open every day 9.00-17.00

Concerts

Gljúfrasteinn hosts concerts every Sunday at 16.00 during the summer. Admission ISK 1.500

Gljúfrasteinn – Laxness museum
P.O. Box 250
270 Mosfellsbær
Tel. + 354 586 8066
gljufrasteinn@gljufrasteinn.is
www.gljufrasteinn.is
www.facebook.com/gljufrasteinn.is

Sægreifinn restaurant: Perennially popular

Sægreifinn is one of Reykjavík's special restaurants. Its cuisine, the place itself and its atmosphere have been featured in media around the world. Sægreifinn frequently hosts customers who have come direct from the airport with a cutting from a magazine or a printout of a website with glowing recommendations. A visit to Sægreifinn is a compulsory first stop for many visitors to Iceland.

Sægreifinn's speciality is fish and vegetables, grilled on skewers, and its lobster soup is nothing less than world renowned.

Its founder, Kjartan Halldórsson, spent years as a ship's cook. Leaving the sea behind, he needed something to keep himself busy and opened a fish shop at Reykjavík's quayside that over the years gradually turned into a restaurant. Kjartan passed away some years ago, but the present proprietor, Elísabet Jean Skúladóttir, makes sure he's not forgotten.

Anyone passing by the harbour in Reykjavik to admire the fleet, both afloat and



Sægreifinn restaurant is a key part of Iceland's marine and culinary heritage, and a visit is quite an experience.

on dry land, has the chance to get a breath of clean sea air. Sægreifinn is a key part of Iceland's marine and culinary heritage, and a visit is quite an experience.

www.saegreifinn.is

The Perfect Present

A variety of beautiful jewelry



Gullkistan goldsmith's shop

Frakkastíg 10 - 101 Reykjavík - Tel. +354 551 3160
gullkistan@vortex.is - www.thjodbuningasilfur.is

BE WARM AND COMFORTABLE

**WOOLLEN UNDERWEAR
FOR ALL YOUR ICELAND ADVENTURES**



**HATS, GLOVES,
WARM SOCKS AND MORE**

**GOOD PRICE
AND QUALITY**



Safa



Ullarkistan

WWW.ULLARKISTAN.IS

You can find us in the main shopping street in Reykjavík - **Laugavegur 25**
and two other locations - **Skeifan, Reykjavík** and **Glerártorg, Akureyri**.



The Handknitting Association of Iceland – Handprjónasambandið – runs two shops in Reykjavík, one at Skólavörðustígur 19 and the other at Borgartún 31.

The warmest gift: A hand-made Icelandic Sweater!



The Real Deal - All the garments from Handprjónasambandið are locally knitted.

In recent years, travellers from all over the world have discovered the quality of the Icelandic wool and been inspired by its natural colour variations and knitted patterns.

The Handknitting Association of Iceland has a wonderful selection of garments in their hub at Skólavörðustígur 19 in the town centre, as well as in their shop at Borgartún 31, slightly further.

There is no greater souvenir from Iceland than a beautiful, functional garment that you can wear for many years to come, and a

hand-knitted item of clothing is an excellent gift for young and old. “Most travellers come here to buy traditional sweaters and want to make sure they are produced locally. Our customers have been extremely happy with the great selection we have, and have fallen in love with the traditional, Icelandic garments, spending hours browsing through our range, from sweaters of all sizes to hats, mittens, socks and more,” says Thuridur Einarsdóttir of the Handknitting Association.

She explains that the Icelandic wool has

unique properties, that have kept the nation warm for over a thousand years, even when wet. The Icelandic sheep is one of the most colorful breeds of sheep in the world, and this has been directly translated into the unique and colorful (yet un-dyed) traditional patterns.

Buying directly from the knitters

A driving force behind the continuous popularity of Icelandic woolen products, The Handknitting Association of Iceland operates under the slogan of “Buy directly from the people who make them.” and has a large selection on offer all made with care by enthusiastic, local knitters.

The Handknitting Association of Iceland – Handprjónasambandið – operates two shops in Reykjavík, one at Skólavörðustígur 19 and the other at Borgartún 31. The stores both carry a wide variety of woolen goods as well as pattern books and recipes, knitting needles, buttons, yarn and “lopi” for knitting enthusiasts.



**BUY DIRECTLY
FROM THE PEOPLE
WHO MAKE THEM**



PURE WOOL

• HANDKNITTED IN ICELAND •



TAX FREE
SHOPPING
SAVE UP TO 14%



**...or knit
your own.**

All you need
in one place.



THE
HANDKNITTING
ASSOCIATION OF ICELAND

Skólavörðustígur 19 • Borgartún 31 • S: +354 552 1890 • handknitted.is

WELCOME TO GRINDAVÍK



Grindavík is a charming little fishing town
and the home of the Blue Lagoon.

With a great selection of restaurants, accommodation,
and leisure activities, Grindavík welcomes you.



www.visitgrindavik.is

